

HOUSING

The
Portland
Observer

Housing Panel Welcomes New Commissioner

The Housing Authority of Portland has welcomed David Thurman as its newest board commissioner.

Thurman, a financial consultant, was appointed to the board by Portland Mayor Vera Katz. Thurman brings expertise in the areas of financial planning, debt management and investment advice. His firm serves state and local governments nationwide.

Thurman has been a north Portland resident for over two years. He moved to Portland from the San Fran-

cor's degree in international relations and a master of arts degree in sociology/organizational behavior at Stanford University in 1989 and 1990.

He replaces David Little, a mediation specialist at the King Neighborhood Facility in northeast Portland, whose term has expired.

The Housing Authority of Portland provides housing services for over 20,000 low income families throughout Multnomah County and its commissioners are representative



Create a New Look: Update Your Garage

(NU) - In most places, the snow is melting and the sun has begun to make it through thick winter clouds. Now's the time to plan spring home improvements.

Updating a garage is a project that is easily managed and won't fill your weekends with work until Labor Day.

The garage door is the largest door on a home. If it is old, sagging or rotting, replacing it can really give your property a new look. Newer doors have better safety features, too.

Here are some helpful hints from Wayne-Dalton, one of the nation's leading manufacturers of entry and garage doors, on shopping for safe garage doors:

- When selecting an automatic

garage door, choose one with an automatic reverse mechanism designed to re-open the door if an object is lodged in the door's pathway.

- Choose a counterbalance system that is safe to install, operate and balance. For instance, look for a system that encloses the springs in a tube, like the TorqueMaster.

- For sectional garage doors, choose a pinch-resistant feature. This eliminates the possibility of getting one's fingers or hands caught between the doors during opening and closing.

To learn more about garage doors and their safety features, call the Wayne-Dalton Information Center at 1-800-827-DOOR (3667), or call your local garage door dealer.

ENVIRONMENT

Water Comes Clean Using Less Energy

(NU) - An energy-efficient process that can be used to desalinate sea water and extract contaminants from waste water is being successfully tested by scientists at Lawrence Livermore National Laboratory in California.

Capacitive deionization is a patented process that uses one-thousandth to one-hundredth the energy required by conventional distillation methods, according to inventor and project leader Joe Farmer.

The CDI process is simple: Water containing salt, heavy metals or even radioactive isotopes is pumped through a stack of thin sheets of carbon aerogel. Each porous aerogel sheet is 3 inches square and has the surface area near the size of a football field. Electricity is applied and the sheets become electrodes, attracting (in the case of sea water) chloride and sodium and allowing purified water to pass through.

Potential applications include:

- Desalination of sea water for residential, commercial and agricultural purposes.

- Purification of waste water, such as boiler water in nuclear and fossil fuel plants, and agricultural waste water containing pesticides and other toxic compounds.

- Electrically driven water softeners for home use.

- Removal of contaminants in blood with minimal cell damage.

"It may be that desalination is the primary application for this in the future," says Farmer, "but we're pretty excited about the environmental potential."



Country home compact, cozy

(NU) - The Cambridge is that rare exception to the rule — a compact country-style home. Typically, homes with gabled rooflines, dormer windows and a wrap-around front porch are in the medium-size range, out of reach for first-time homebuyers and far too large for empty nesters.

But this plan is designed for economy and efficient maintenance, making it equally well-suited to the needs of singles, families with young children, or couples who've graduated from parenthood to grandparenthood.

And placement of the front bedroom, adjacent to the front porch, makes it an ideal location for a home office. Relocating the closet would allow installation of a door for direct access from the porch.

Day-to-day living takes place in a bright, vaulted family room/kitchen combination that faces the rear. Naturally illuminated by skylights, side windows and a high dormer, this area rarely needs electrical lighting during daylight hours.

Sliding glass doors in the eating nook open onto a wide deck allowing meals to move outside

when days are warm. Utilities are just a few steps away, tucked in the passageway to the garage.

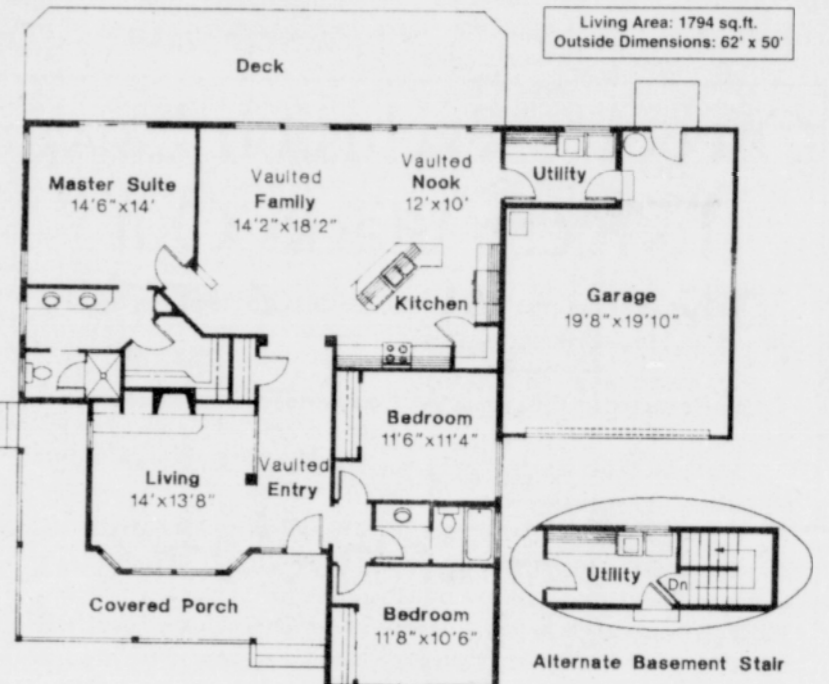
Potted plants flourish on 8-foot-high recessed plant shelves that flank the vaulted entry hall, overarch the entrance to the family

room, and mark the passageway to the master suite. Families with brown thumbs can use these shelves as display space.

Luxury amenities in the master suite include a large walk-in closet and twin basins in a dressing area separate from the water closet and shower.

While the Cambridge lacks a formal dining room, it does have an impressive living room with a wide bay window. Built-in bookcases flank a wide-hearth fireplace, providing display space for family mementos.

For a review plan, including scaled floor plans, elevations, section and artist's conception, send \$15 to Associated Designs, 1100 Jacobs Dr., Eugene, Ore. 97402. Please specify the Cambridge 10-045 and include a return address when ordering. A catalog featuring over 150 home plans is available for \$12. For more information call (800) 634-0123.

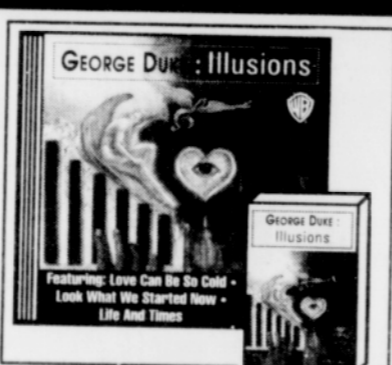


SPRING HOME & GARDEN

MUSIC MILLENNIUM CELEBRATES BLACK HISTORY MONTH



\$8.44 Cass
\$13.99 CD



\$8.44 Cass
\$12.99 CD



\$7.44 Cass
\$12.99 CD



\$8.44 Cass
\$12.99 CD



\$8.44 Cass
\$12.99 CD



Offer Good Through 2-21-95

EAST PORTLAND
32ND & E. BURNSIDE
231-8926



NW PORTLAND
23RD & NW PORTLAND
248-0163

MUSIC MILLENNIUM

We Make It. You Bake It.
IT'S ALWAYS
FRESH!



New Location!

287-5520 281-6833
71st & Fremont 41st & Fremont



Gladly Accepted!

LARGE PEPPERONI PIZZA

Real cheese and 70 slices of premium pepperoni Serves 4-6.

\$5.99



Not valid with any other offers.

LARGE HAWAIIAN PIZZA

Canadian-style bacon with lots of juicy Dole pineapple. Serves 4-6.

\$6.99



Not valid with any other offers.

LARGE SPECIALTY OF THE HOUSE

Italian sausage, mushrooms, black olives, herb & cheese blend.

\$7.99



Not valid with any other offers.

LARGE COMBO

Salami, pepperoni, sausage, olives, mushrooms, and onions.

\$8.99



Not valid with any other offers.

LARGE COWBOY PIZZA

Pepperoni, Italian sausage, mushrooms, black olives, herb & cheese blend.

\$8.99



Not valid with any other offers.

LARGE PAPA'S FAVORITE

Pepperoni, sausage, beef, olives, mushrooms, and onions.

\$9.99



Not valid with any other offers.