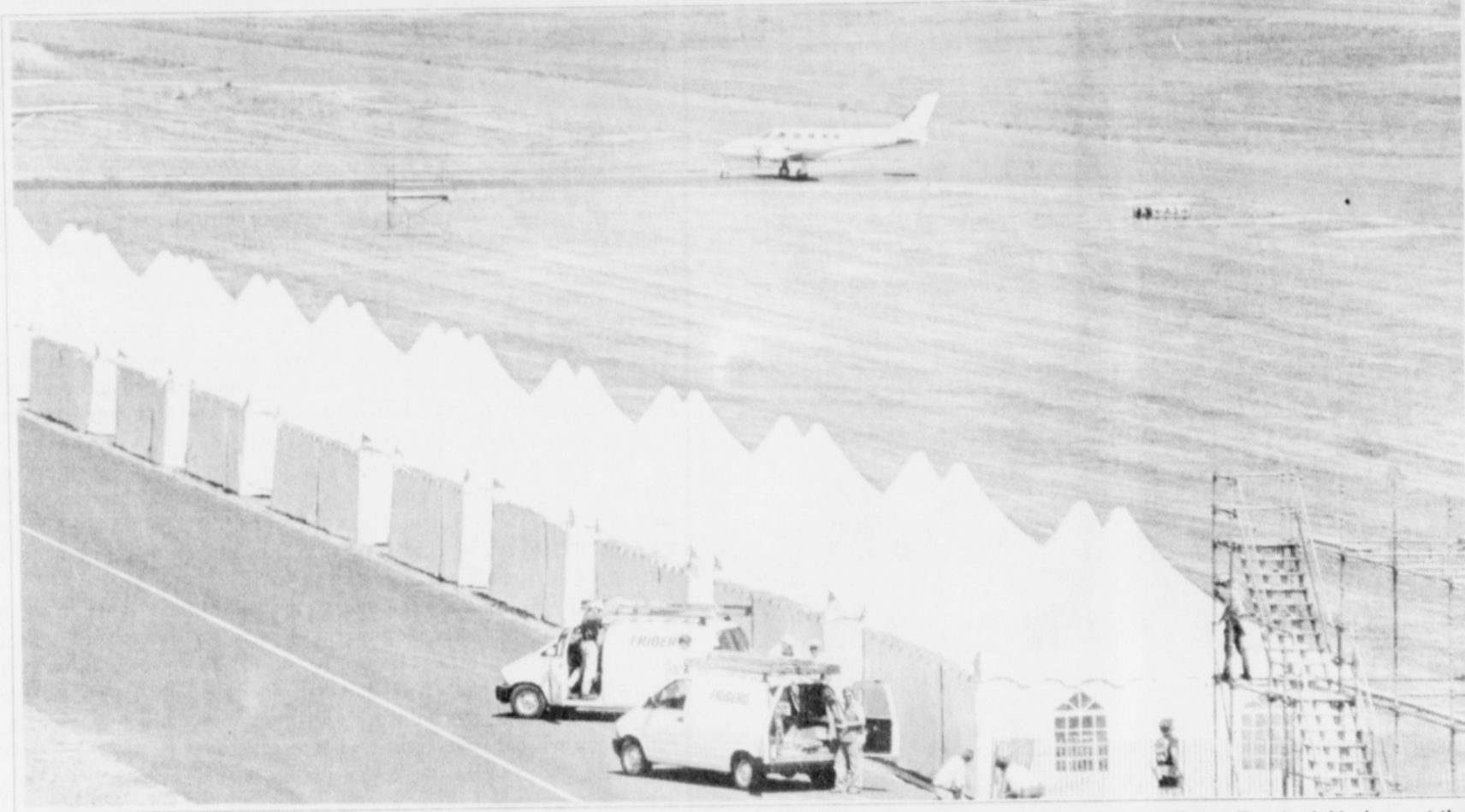


# HOUSING The Portland Observer

## Local 48 Team Supplies Airshow's Ground Power



A NECA/IBEW Local 48 team from Friberg Electric supplied the electrical power needed for the 1994 US Bank/Rose Festival Airshow at the Hillsboro Airport. The annual challenge of supplying power to the media, chalet line, sound system, exhibit areas, pavilions, and the field kitchen takes a crew of 8 to 12 electricians each year.

## McMurphy's Appliance Center

Washer & Dryer \$199<sup>00</sup>  
Refrigerators From \$129<sup>00</sup>  
Ranges From \$129<sup>00</sup>

Open Mon. - Fri. 9:00am to 5:00pm  
Saturday 10:00am to 2:00pm  
Sunday Closed

**60 DAY WARRANTY • FREE DELIVERY**  
4011 NE MLK  
288-3233  
Sales • Service • Parts

## New Mothers Often Return To Smoking

Pregnant women may be getting the message about the dangers of smoking, but the majority

### 118 New Apartments For Seniors

State and city officials, housing advocates, senior citizens, financiers and downtown advocates gathered today to officially open the Twelfth Avenue Terrace located at S. W. 12th and Market Streets downtown. The newly constructed building will offer 118 studio apartments for homeless individuals, or those in danger of becoming homeless, who are 62 years of age or older or disabled.

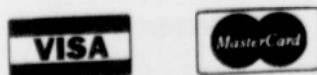
The \$6.5 million project will be owned by the Elderhope Limited Partnership with REACH Community Development, Inc., as the General Partner. Financing for the project was completed through a \$2 million loan from PDC; a \$2.6 million loan from the Oregon Housing and Community Services Department; and the sale of \$1.9 million in low-income housing tax credits to the Oregon Equity Fund.

Apartments will rent for \$337 per month with the Housing Authority of Portland providing rent subsidies through the U.S. Department of Housing and Urban Development.

Speakers at the opening event included City Commissioner Gretchen Kafoury; PDC Housing Director Neyle Hunter; Baruti Artharee, Director, Oregon Housing and Community Services Dept.; Deborah Saweuyer-Parks, Executive Director, Oregon Equity Fund; Wendell Johns, vice-President for Housing Investments, Fannie Mae; Dan Cooper, REACH Board President and Susan Emmons, Executive Director, Northwest Pilot Project.

## Dad's Oil Service

Speedy Service  
Friendly Call  
For Quote



heating oils

Best Cash Prices  
104 NE Russel  
Portland, OR 97212  
282-5111

## Obese Black Teens Unaware Of Health Risks

Many overweight black teens do not realize obesity is a health risk. "They know they have a weight problem, but they don't think of the health consequences," said Dr. John Foreyt of Baylor College of Medicine in Houston.

Misconceptions about obesity differ greatly among black and white teenagers. Studies show that 40 percent of obese black females and 36 percent of the males perceived themselves as heavy compared nearly 100 percent of white females and 78 percent of white males.

Adolescence is a critical time of adult obesity development. Eighty percent of obese teenagers are likely to grow into overweight adults, Foreyt said. It is important to educate teens about the health risks of obesity, he said.

return to the habit following pregnancy.

One hurdle for pregnant women who quit smoking is the change in attitudes of those around them once the baby is born, said Dr. Marianna Sockrider, a pediatric pulmonologist at Baylor College of Medicine in Houston.

"During pregnancy, people are sensitive about smoking," she said. "They don't smoke around the pregnant woman or offer her cigarettes. But, once the baby is born, the pressure to smoke resumes."

Sockrider suggests that new mothers who wish to quit smoking permanently examine why they smoke and look at different post-pregnancy coping mechanisms. They can also seek the cooperation of smokers around them.

## GROCERIES FOR LESS

Name Brands • Wholesale Prices  
canned • packaged • frozen food  
Deli Items • Pet Foods  
Soaps • Detergents • Much More!

**The Bee Company, Inc.**



Groceries at Wholesale prices  
800 N. Killingsworth • Portland, Oregon 97217 • (503) 283-3171  
OPEN DAILY EXCEPT SUNDAY 9:30 - 6:00

## Spend money on your home, not your loan.

Introducing The  $\emptyset$  Loan from Washington Mutual. A new kind of home loan that eliminates many of the costs that lenders usually charge. Things like loan-origination fees, appraisal costs, and title insurance fees. The  $\emptyset$  Loan can save you thousands of dollars on your closing costs. Which means you can put your money into useful things like wallpaper, carpeting, or a new deck. (We do require a \$500 application deposit, but you get it back once your loan closes.) For details call the friend of the family.\* And tell us you want to pay less for your next home loan. That's Different, that's Washington Mutual.

The  $\emptyset$  Loan from Washington Mutual

1-800-756-8000

\*Your settlement charge will be waived when you close your loan with Washington Mutual. (The seller's costs are not waived.) A pre-payment fee may apply.  
Equal Housing Lender. FDIC Insured

## Using energy wisely can be as easy as changing a light bulb.

If you can change a light bulb, you can use energy more efficiently. It's just that simple. All you have to do is replace your standard light bulbs with the newer, compact fluorescent bulbs.

Compact fluorescents are ideal anywhere you keep lights on for 3 hours or longer - like in a living room lamp or a porch light. Used appropriately, compact fluorescent lights provide the same amount of light as ordinary bulbs, last nearly 12 times longer and use up to 75% less energy.

In addition to costing less to operate, compact fluorescents are better for the environment because they use energy more efficiently.

Look for more energy-efficiency ideas at the Power Smart® displays at your local retailer. Or, for more information on how Power Smart® can brighten your living environment, contact Portland General Electric at 1-800-722-9287. We'll be happy to illuminate you.

Power Smart® is based on a product's relative energy efficiency characteristics. Individual practice affects energy use. Ask your retailer for more information. Power Smart® is a registered trademark of Power Smart® Inc.

