



# Rose Festival Events: "A View From My Window"

## Grand Floral Parade

It's a Northwest classic that begins Saturday at 10 a.m. from Memorial Coliseum to Downtown Portland.

## Dragon Boat Races

A day of colorful river races Saturday and Sunday, 8:30 a.m., Tom McCall Waterfront Park.

## Festival Of Bands

Hear top-notch high school marching bands sound off Friday, 7 p.m. at Civic Stadium, downtown.

## Grand Floral Walk

Be part of a parade by dressing as a walking float (flowers required), Saturday, 8 a.m., downtown.

Volume XXIV, Number 23

"Serving the community through cultural diversity"

June 8, 1994

Mrs. Frances Schoen-Newspaper Room  
University of Oregon Libr  
Eugene, Oregon  
97403

# The Portland Observer 25¢

## THE WEEK IN REVIEW

### Parade Musicians Perform Downtown

Two participants in the Delta Air Lines Grand Floral Parade will offer free concerts downtown.

The St. Petersburg Second Time Arounders Marching Band are adult members from former high school, college and military marching bands. They perform Friday at noon in front of the Standard Insurance Center at Fifth Avenue between Taylor and Salmon streets.

The Marching Handbell Choir is the largest handbell choir in the world consisting of 90 members from California, Oregon, Washington, Idaho and the Midwest. They perform Saturday, following the parade, at First Christian Church on Southwest Park and Columbia streets in downtown Portland.

### Watch The Parade From Broadcast Area

You can watch the Delta Air Lines Grand Floral Parade and be part of the backdrop for the nationwide broadcast. Although reserved seats inside Memorial Coliseum have sold out, additional general admission seats have been added to the outdoor seating area on the north side of the Coliseum.

Outdoor admission seating is \$8 and tickets are on sale at Ticketmaster outlets or by calling 224-4400. The seating area serves as a backdrop for the television broadcast of the parade which reaches more than 21 million households in 25 cities across the nation.

"Watching the parade on-site at the Coliseum means you can see the entries when floats are at their freshest and marching bands, equestrian units and drill teams perform their songs and formations," said Marcia Apperson, chairman of the Rose Festival's Grand Floral Parade Committee.

### Roses To Brighten Bess Kaiser Hospital

Gardeners will win prizes and brighten patient's hospital stay on Tuesday at the 15th Annual Bess Kaiser Medical Center Rose Show, organized by medical center volunteers in cooperation with the Portland Rose Society.

Judges will select first, second and third place winners in the following categories: red, pink, yellow white, bi-color and miniature roses. Entries will be accepted on the day of the show between 7 a.m. and 9 a.m. at the medical center's main entrance, 5055 N. Greeley Ave. Vases and entry forms will be provided. The roses will be judged at 10 a.m. and remain on public display until 1 p.m. Wednesday, before being distributed to hospital patients.

When picking roses for exhibition, make sure the flower is half to 3/4 open (roses continue to open once picked). Cut the stem long and keep the rose in water from the moment it's cut.

## 1994 Rose Festival Court

### Football Player Chosen Rose Festival Queen

BY MICHAEL LEIGHTON  
Joy Lawrence is the first football player to rule the mythical kingdom of Roseria.

The Lincoln High School girl was crowned Senior Court Queen Thursday among 14 princesses from area high schools participating in the Portland Rose Festival Queen Selection.

Lawrence, 17, was a kicker on the boy's varsity football team last fall. She also participated on the girl's varsity soccer team, girls varsity basketball team and a number of other sports and clubs. She plans on participating in college sports and is considering a career in medicine or aeronautics.

The system of choosing princesses for the Rose Festival was introduced in 1932. Each girl must have a grade point average of 2.75, a good attendance record and good citizenship to be considered an applicant for princess. They are first placed on the royal court in a student body vote at their school.

For the queen's coronation, they are judged on leadership, scholastic achievement, school activities, civic involvement, volunteer projects, communication skills, poise and appearance.

The crown worn by today's Rose Festival Queen was first presented to the Rose Festival Society in 1922. The frame of the crown is made of 14-carat gold. It has a large blue zircon at its tip, 650 white sapphires and eight rare pigeon-blood rubies. The crown is valued at \$6,000 and is housed at the main branch of U.S. Bank when not in use.

A traveling crown queen was made in 1990 for wearing at all public appearances, other than coronation night.



Andrea Tracy,  
David Douglas



Sherelle Penn,  
Grant



Alyson Day,  
Wilson



Mira Bastrica,  
Roosevelt



Megan O'Connor,  
Parkrose



Emily Strang,  
Central Catholic



Alicia Toole,  
Madison



Jennifer Hibbard,  
St. Mary's Academy



April Cason,  
Jefferson



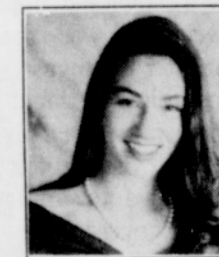
Kara Barber,  
Franklin



Rebekah Bowdon,  
Marshall



Ashley King,  
Cleveland



Kelly Jo LeMay,  
Benson



Queen Joy Lawrence, Lincoln High

### Parade Features National TV Hosts

The Delta Air Lines Grand Floral Parade will feature two national TV personalities this year: Paula Zahn, co-host of CBS "This Morning," and Gordon Elliott, a nationally syndicated talk show host. Zahn will serve as this year's Parade national co-anchor, broadcasting alongside KOIN (Channel 6) anchors Mike Donahue and Shirley Hancock while Elliott will provide on-street reporting.

Paula Zahn has been co-anchor of CBS "This Morning" since 1990. Prior to 1990 she anchored and co-anchored programs such as ABC's World News This Morning and Good Morning America. She has also anchored and reported for TV stations spanning from San Diego to New York City.

Gordon Elliott, a new nationally syndicated talk show host who has an off-beat comic demeanor, will be the on-street TV personality for the Grand Floral Parade telecast this year.

Gordon has arranged video visits with a couple who met at the Rose Festival, married during the Rose Festival and had a baby during Rose Festival who is named Rose; kids who chalk their body outlines along the street before the parade who will chalk Gordon's outline.

The Rose Festival and the City of Portland are pleased to have Paula Zahn and Gordon Elliott as this year's Delta Air Lines Grand Floral Parade national TV personalities.

### Buffalo Soldiers To Ride In Floral Parade

A little known chapter in U.S. and Oregon history will receive recognition in Portland's Rose Festival Grand Floral Parade, when the Buffalo Soldiers ride in the prestigious event. The recent acceptance of Hyalite, Inc.'s proposal to join the parade is being greeted with "pride and joy by Oregon's Buffalo Soldier members" said Hyalite Executive Director Mark Little. The troop served as honor guards for the Oregon Trail Wagon Train's final trek into Oregon City last September, just ahead of Oregon Gov. Barbara Roberts.

The Buffalo Soldiers Retrospective Program, a project of Hyalite, Inc. tells the story of the Black American soldiers who fought in the Civil War and protected American settlers on their journeys west of the Oregon and Sante Fe trails. The Black men who served in the 9th and 10th cavalry were known as the Buffalo Soldiers, a nickname given to them by the Indians

on the plains. The soldiers' black and curly hair, and robes of buffalo pelts, along with their bravery, led to the nickname which was accepted by the troopers as a mark of distinction and honor. Oregon members of Hyalite's Buffalo Soldiers Retrospective Program provide mentoring to young urban youth by acquainting them with the contributions of the Buffalo Soldiers through camping, fishing, horsemanship, and other recreation activities. "Teaching young boys about this important chapter of African American history is our way of building self-esteem, pride and personal responsibility," said Hyalite Board Chairman Raleigh Lewis.

Hyalite is a nonprofit organization incorporated to develop the talents of African American artists and provide culturally diverse history and arts programs for urban youth. Contributions are welcome and can be sent to Hyalite, at P.O. Box 10596, Portland, OR 97210.

### Special Seating For The Grand Floral Parade

Commissioner Gretchen Kafoury today announced special seating will be available for Senior citizens and individuals with special disabilities who want to view the Rose Festival Grand Floral Parade, Saturday, June 11.

Seating is available on a first come, first served basis at two locations. The East side location is N.E. Martin Luther King Jr. Boulevard in front of the Convention Center and offers park bench seating in an open area. Two portable toilets will be at this location, with one accessible to handicapped. On the West side, park bench seating only will be on both sides of S.W. Stark, between Broadway and Park in Downtown Portland.

Parking for vehicles with disabled parking permits has been reserved for both areas. The East side parking location is in the Convention Center parking lot for a \$4.00 charge. The West side location is on S.W. Ninth between Park and Oak, and can accommodate about 30 vehicles on a first-come, first-served basis.

Monitors will be on duty to assist. Commissioner Kafoury urges people to come early for the best viewing points.

EDITORIAL

A2

HOUSING

A5

HEALTH

A6

METRO

B1

ENTERTAINMENT

B4

RELIGION

B8

CLASSIFIEDS

B6