

# The Portland Observer 25¢

## THE WEEK IN REVIEW

### Petrovic Dies In Auto Accident In Germany

Police said Petrovic was sitting in the front passenger seat when the driver of the car lost control. The 6'5" Petrovic was selected to the all NBA third team this past season. He had also played with the Portland Trail Blazers.

See Related Story on Page B2

### Artists Celebrate 20 Years At Saturday Market

Thousands of artists made their start at the Saturday Market over the years. Entertainers such as The Flying Karamozov Brothers, went on to the 'big time'. Some vendors have gone on to open their own shops, however fourteen vendors have stuck with Saturday Market for twenty years.

See Related Story on Page B1

### Oregon's State Government 7th Most Efficient In Nation

Every year Financial World magazine ranks all 50 states based on how skillfully and efficiently they use their tax dollars--how well they run their state governments to make sure money isn't wasted. Oregon ranks 7th. Oregon is also a national model for improving government. Oregon is a national leader in planning for results. "Our work is to make sure state government delivers services as well as possible will never end," states Governor Barbara Roberts. "By being tight with our dollars between legislature sessions, we are able to use that money to pay for services in the next two years."

See Related Story on Page A3

### The Guinier Affair

President Clinton's decision to dump Lani Guinier as his nominee to head the Civil Rights Division in the U.S. Department of Justice confirms our greatest fears. Senator Bob Dole did a masterful job of using the Willie Horton-type of fear mongering and warfare queen-stereotyping of Blacks to conjure up visions of liberalism gone amuck to sabotage this nomination. The lesson should be clear to African-Americans. It's not about... qualifications, but about political power and control at any cost.

See Related Story on Page A2

### Memorial Coliseum Management Transition Begins

Oregon Arena Corporation announced that it will assume management of Memorial Coliseum and plans to hire 41 full time employees. MERC issued lay off notices to all current Coliseum employees. More than 53% of the available positions have been offered to current Coliseum employees. 50% of all new hires are also residents of the city of Portland, and 30% of those new hires are inner north/northeast residents.

See Related Story on Page A4

## 1993 Rose Festival Court



Kurra Turner



Leteefah Sadruddin



Elsie Rucel Ariola



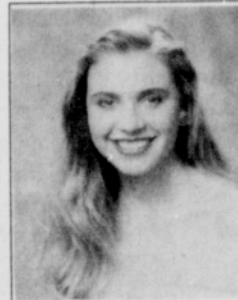
Rachell Tolman



Tina Weatheroy



This years Queen of Rosaria, from Cleveland High School, Mikylah Myers



Keri Zuercher



Joy Jones



Melissa Nguyen



Sarah MacKay



Annemarie Adams



Keri Winfree



Michelle Rugh



Janice Willie

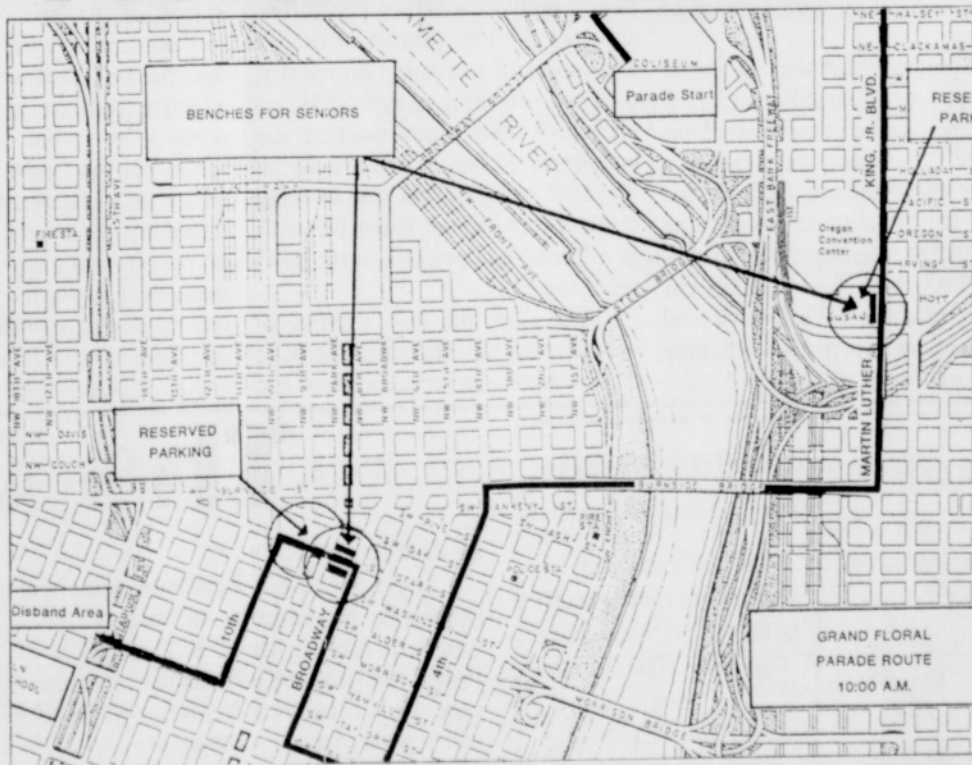
## Special Seating For The Grand Floral Parade

Commissioner Mike Lindberg announced seating will be available for senior citizens and individuals with special disabilities who want to view the Rose Festival Grand Floral Parade, Saturday, June 12.

The reserved seating (Park bench seating and an open area for wheelchair viewing) is on the east side of NE Martin Luther King Jr. Boulevard in front of the convention center. Two portable toilets will be at this location, with one accessible to the handicapped. On the west side, park bench seating only will be on both sides of SW Stark, between Broadway and Park in downtown Portland.

Parking for vehicles with disabled parking permits has been reserved for both areas. The east side parking location is in the convention center parking lot of a \$4.00 charge. The west side location is on SW Ninth between Park and Oak, and can accommodate about 30 vehicles on a first-come, first-served basis.

Monitors will be on duty to assist. Commissioner Lindberg urges people to come early for the best viewing points.



## The Grand Floral Parade: Among My Souvenirs

Although the Portland Rose Festival has more than 70 exciting events planned for its 85th annual season, the Delta Air Lines Grand Floral Parade is always the highlight of the 25-day Festival.

The Delta Air Lines Grand Floral Parade showcases some 26 all-floral floats, 22 high school marching bands from around the Northwest, Washington, Idaho, Colorado, California and Taiwan, 39 equestrian units, a Grand Marshal, special guests and the newly-chosen Queen of Rosaria, Mikylah Meyers from Cleveland High School, and her Royal Court.

Spectators from throughout the country line the streets of downtown Portland to see the nation's second largest of all-floral parade and the single-largest attraction in Oregon. In 1992, more than 500,000 people lined the streets along the 4.5-mile parade route. This year, a record high of nearly 30 million television households across the United States will receive the parade on a syndicated television network from Anchorage to Atlanta.

Ahmad Rashad, former University of Oregon All-American and host of "NBA: Inside Stuff," along with his wife, Phyllicia Rashad of "The Cosby Show," will serve as the Grand Marshals for the 1993 Delta Air Lines Grand Floral Parade.

Parade spectators can vote for their favorite float against the parade on Saturday and Sunday at the Mervyn's Showcase of Floats at Oregon Square located on N.E. Holladay between 7th and 9th streets. Ballots will be available at the float display area. Ballots may be turned in at Portland Mervyn's stores before June 20. The awards will be announced in The Oregonian on June 22.

Picking a favorite float is never easy, however, and 1993 will be no exception. The float themes will follow the 1993 Rose Festival Theme, "Among My Souvenirs." Always a favorite in the parade is the KOIN-TV float carrying the newly-crowned Queen of Rosaria, Mikylah Meyers, and her court. The Junior Court also has its own float sponsored by This Week Magazine.

Lyle Cobb, a favorite in the equestrian entries, celebrates his 46th anniversary in the Grand Floral Parade. He is in his eighties and will be riding in a special horse-drawn carriage.

Top quality bands from around the United States and the world have been invited to march in the Delta Air Lines Grand Floral Parade including the Eisenhower High School Marching Band from Rialto, California; Overland High from Aurora, Colorado; Burley High School Band from Burley, Idaho; Fire Brigade Band from New South Wales, Australia; the Shu-Te Girls Home Economic and Commercial High School Marching Band from Kaohsiung, Taiwan.

The Miller Genuine Draft One More Time Around Again Marching Band, all 536 members, will once again march through the streets of Portland in the parade. The Wendy's D.A.R.E. Rose Festival Flag Team is the opening act of the Delta Air Lines Grand Floral Parade for the third year. An elite group from the 200-member team of Portland area high school students will start the parade with vibrant images for the 30-million TV households that can tune into the parade across the country.

Paul Zahn of CBS This Morning emcees the parade with Mike Donahue and Shirley Hancock of KOIN-TV, which is the originating station for the parade telecast.

### Housing

#### "Pacific Power Ranks Among The Least In Utility Cost"

Pacific Power has taken steps, including acquisition of low-cost energy resources, ensuring, the company will remain a low cost provider of electricity.

Page A4

### Sports

#### "Tommy Morrison UpSets George Foreman"

Tommy Morrison's 20 year age advantage paid off for him as he defeated George Foreman in a 12 round unanimous decision. It never became the slugfest as was expected. Neither could hurt the other.

Page B2

### Arts & Entertainment

#### "What's Love Got To Do With It?": The True Life Story Of Tina Turner

An impressionable young woman, Tina Turner falls for the charms of musician Ike Turner. As their professional careers soared, their personal troubles threaten to destroy what they had worked for.

Page B3

### Health

#### "Free Program Provides Watchful Eye For Homebound Adults"

If mail backs up, even for one day, the letter carriers know to contact Good Samaritan, where the CarrierLink staff immediately contacts family or friends to check in.

Page B4

HOUSING

AUTOMOTIVE

VANCOUVER

SPORTS

ENTERTAINMENT

CAREERS

CLASSIFIEDS

A4

A5

A6

B2

B3

C1

C6