

Health

National Health Care Reform; Mandated Mental Health Care

The Federal Government's new Health Care Reform Package has been the topic of much discussion in recent weeks. The New York Times recently gave a report from President Clinton's Task Force on National Health Care Reform which previewed the new package.

Under this new plan the Government is proposing to increase its already \$16 billion funding of the psychiatric industry by \$6.5 billion. This proposal would also mandate that private insurance companies put no stops or limits on the amount or duration of mental health services.

Insurance fraud is extremely wide spread in the psychiatric industry. There have been many documented cases of psychiatrists overcharging for treatments, billing a patients insurance company for counseling that never happened, holding people in hospitals until their insurance runs out, etc. In the opening statement of Representative Pat Schroeder's House Committee

hearings last year Schroeder states: "Our investigation has found: that thousands of adolescents, children and adults have been hospitalized for psychiatric treatment they didn't need; that hospitals hire bounty hunters to kidnap patients with mental health insurance; that patients are kept against their will until their insurance benefits run out; that psychiatrists are being pressured by their hospitals to alter their diagnosis to increase profit; that hospitals infiltrate schools by paying kickbacks to school counselors who deliver students; that bonuses are being paid to hospital employees, including psychiatrists, for keeping the hospital beds filled; and that military dependents are being targeted for their generous mental health benefits." This is an all too common occurrence that not only raises cost for the individual but also raises the insurance premiums for everyone else as well.

With psychiatric care mandated

under this proposed "universal coverage" the independent business owner will not be given the choice or the option to exclude mental health care from the basic benefits package. This has the potential of breaking a small business and at the very least it would put insurance costs through the roof.

Scott Sulak, a spokesman for the Citizens Commission on Human Rights (CCHR), a psychiatric watchdog organization that was established in 1969 by the Church of Scientology to investigate and expose psychiatric violations of human rights, comments "When the psychiatric industry has had mandated mental health insurance in the past they have run insurance bills up to such an extent that commissioned studies by insurance companies have shown that the rise in health care premiums was primarily due to mental health care costs, in turn necessitating a nation health care plan. With the Governments new health care reform package the potential of bankrupting the Country is very high."

Health Check-ups For Women Offered

A health check-up for women will be given from 1am to 1pm, Saturday, May 15, 1993, at Western States Chiropractic College Clinic in Portland.

The \$20 examination fee will cover the cost of a pelvic exam with pap smear, breast exam with instructions on self examination and a spinal evaluation. The health screen also includes a urinary lab test and a blood pressure check. The check-ups are administered by fourth-year interns under the supervision of chiropractic physicians.

Women are encouraged to call early for appointments at 255-6771 as openings are limited. The clinic is located in the Parkrose area of Portland at 2900 NE 132nd Avenue.

Parents Anonymous of Oregon

Volunteers needed for Child Abuse Prevention Program at Waverly Childrens Home. Four hours of your time once a week can make a difference in the life of a family! To volunteer call Carole at 238-8819.

Kaiser Permanente Offers Health Education Classes In North Portland

Several classes open to the public are being offered in North Portland this spring through Kaiser Permanente. For registration information, call Kaiser Permanente's Health Education department at (503) 286-6816.

"Parenting a Child with Special Needs" helps parents find support and gain skills for parenting a child with a severe chronic illness or developmental disability. The nine sessions will be held from 6:30 to 8:30pm on Tuesday, April 27 through June 22, at Kaiser Permanente's Education & Conference Center (Town Hall), 3704 N. Interstate Ave., Portland. Cost is \$75 for Kaiser Permanente members/couples, \$140 for the general public. Please register at least 10 days before the class starts.

"Arthritis Education" helps you learn to cope with arthritis and other systemic illnesses your doctor has diagnosed. The four sessions will be held from 10:30am to noon on Wednesday, April 28 through May 19, at Kaiser Permanente's Education & Conference Center (Town Hall), 3704 N. Interstate Ave., Portland. Cost is \$20 for Kaiser

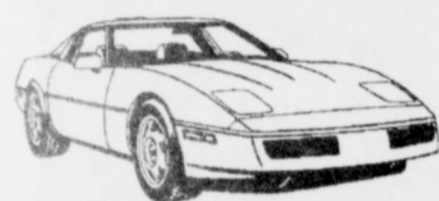
Permanente members, \$65 for the general public. A spouse or other support person is encouraged to attend at no extra charge. Please register at least 10 days before the class starts.

Chronic illness affects the entire family. "Learning to Live With Chronic Illness or Chronic Pain" helps patients and spouses adjust to changes, learn coping strategies and develop support systems. The 10 sessions will be from 6 to 8pm on Thursday, April 29 through June 17, at Kaiser Permanente's Central Interstate Medical Office, 3600 N. Interstate Ave., Portland. Cost is \$80 for Kaiser Permanente members/couples, \$140 for the general public. Please register at least 10 days before the class starts.

Kaiser Permanente's "Managing Stress and Anxiety" program can help manage stress which accompanies the pressures of life. The eight sessions will be held from 6:30 to 8:30pm on Mondays, May 3 through June 28, at Bess Kaiser Medical Center, 5055 N. Greeley Ave., Portland. Cost is \$80 for Kaiser Permanente members, \$140 for the general public (fee includes textbook). Please register at least 10 days before the class starts.

The Portland Observer encourages our readers to write letters to the editor in response to any articles we publish.

For best results
ADVERTISE IN THE OBSERVER



AUTOMOTIVE



AAA Oregon Urges Motorists To take "The Ultimate Driving Challenge"

Because driver error remains the leading cause of motor vehicle collisions, AAA Oregon is urging motorists to improve their driving skills by watching "The Ultimate Driving Challenge" television special.

The one hour program is Friday, April 23, 9-10pm, on your local CBS television network affiliate. The show puts motorist behind the wheel on some of America's most challenging roads. It is a test of driving competency featuring celebrity participants, expert drivers, state-of-the-art computer graphics and in-home viewer participation.

Paula Zahn, co-anchor of "CBS This Morning" will host the special, joined by Craig T. Nelson, star of "Coach."

The American Automobile Association's traffic safety and engineering staff consulted extensively with the show's producers in developing the questions and answers presented by various driving situations.

"Using the latest technology, including special cameras, the program is an entertaining opportunity to brush-up on driving skills that could help prevent a collision," said AAA Oregon President Roger Graybeal.

"WHITE AUTO WHOLESALE"

10900 SW Canyon Rd. Beaverton • Phone 520-9301

Grand Opening Sale

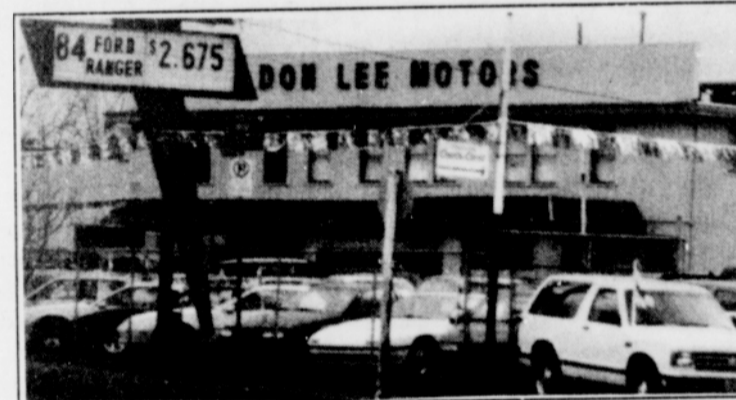
If You're Wanting To Establish Or Re-establish Credit, Come See Us...
Regardless Of Past Credit Problems Or Bankruptcy...
Come Celebrate With Us During Our Grand Opening...

EASY FINANCE APPROVAL

1980 Mazda 626 4 Dr	\$975
1981 VW Rabbit 2 Dr. Diesel	\$975
1977 Olds Cutlass 2 Dr	\$975
1979 Chev Camaro Auto V8 (nice)	\$1,675
1984 Chev Celebrity 2 Dr. A/C	\$1,975
1970 MBZ 280 SE 4 Dr. Auto	\$2,475
1985 Honda Civic 2 Dr.	\$2,950
1987 Ford Tempo All Wheel Drive	\$2,950
1987 Ford Escort 5 Sp	\$2,275
1984 VW Jetta GLI 4 Dr.	\$3,950
1976 BMW 200Z Sunroof, A/C	\$3,950
1987 VW Jetta GLI	\$6,950
1984 BMW 325e Auto Loaded	\$7,950
1985 BMW 735i Auto Loaded	\$10,450



Don Lee Motors, Inc



Same Location Since 1948
Over 100 Late-Model
Used Car Inventory
Fleet & Lease All
Makes New

289-5579

4650 North Lombard

WHY PAY FULL RETAIL?

PUBLIC AUTO AUCTION
Saturday, April 24th, 12:00 Noon

Up to 70 cars (many under \$1000) • Gates open at 9:00 a.m.

FEATURED VEHICLES

85 Chev Celebrity	80 Chev Malibu S/W	84 Dodge Caravan Wag
85 Ford LTD	84 Merc Topaz GS	80 Toyota Corolla
82 Olds Cutlass	82 Pontiac J6000	78 Cad Eldorado
87 Suzuki Samurai JX	78 Chev Monte Carlo	88 Dodge Ram Van

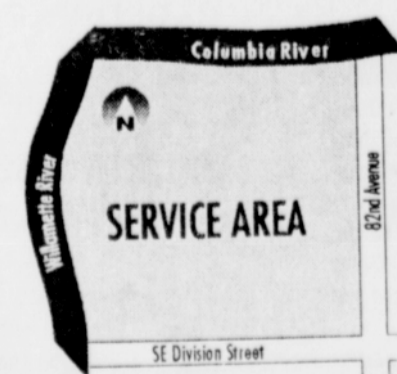
River City **PUBLIC AUTO AUCTION**



6500 NE Martin Luther King, Jr., Blvd. • Portland

NEED A CAR?

DO YOU LIVE IN THIS AREA?



YOU MAY PURCHASE A CAR OR TRUCK FROM US WITH:

- NO CREDIT CHECKS OR CREDIT TURNDOWNS...EVER
- DOWNPAYMENTS \$400 OR LOWER
- 12.9% A.P.R. FINANCING

YOU CAN HAVE THE CAR CHECKED OUT **BEFORE** IT'S BOUGHT

E.Z. CARR

A DIVISION OF CARR CHEVROLET GEO NISSAN

231-0000

We care more about your future than we do your past.