

# What makes Quick Control big news? It's simple.

There's nothing complicated about it. Our new Quick Control™ plan puts you in control fast. And it's hassle-free, so it's easy to stick with. You'll choose from delicious pre-planned menus of the foods you love. Meals that are a snap to prepare with minimal weighing and measuring. Quick Control. So get with the plan and you'll see, success has never been this simple.

**Join Any Class Any Time**

Call Collect 1-503-297-1021  
Weekdays 8:30 a.m. to 5:00 p.m.

## NORTHEAST PORTLAND

**Maranatha Church**  
4222 N.E. 12th  
(Enter on Skidmore)  
Sat. 9:30 a.m.

**Temple Baptist Church**  
1319 N.E. 7th  
Fireside Room  
Tues. 12:15 p.m.

**Tillamook Park Bldg.**  
2108 N.E. 41st Ave.  
Mon. 7:00 p.m.  
Tues. 7:00 p.m.  
Wed. 9:30 a.m. & 5:00 p.m.  
Thurs. 7:00 p.m.  
Fri. 9:30 a.m.

**Nationwide Insurance**  
919 N.E. 19th Ave  
Wed. 11:30 a.m.

## NORTH PORTLAND

**Rivergate Community Church**  
4737 N. Lombard St.  
Tues. 7:00 p.m.

**University of Portland**  
5000 N. Willamette Blvd.  
Columbia Hall  
(Enter From Portsmouth)  
Wed. 5:00 p.m.

**You've Got It In You To Get It Off You.**

*Weight Watchers*

© 1992 Weight Watchers International, Inc., owner of the registered trademark. All rights reserved.

## Volunteers Needed

Interested in Community Development in Northeast Portland? The Northeast Genesis Project needs your help!

We need volunteers interested in:

1. Community Service
2. Fundraising
3. Community News Letter
5. Board Participation

Please call Rose Marie Davis @ 281-8976 any time.

## Toll-free lines to Department of Revenue available

Taxpayers with questions can call the Department of Revenue toll-free. These lines will be open 24 hours a day, 7 days a week and will provide recorded information about taxes. You can also reach department staff during office hours, which are weekdays 8 am to 5 pm, except Wednesdays, 9 am to 5 pm.

Callers can order tax forms and listen to messages about current tax topics, such as how to determine residency for tax purposes. Beginning March 1, taxpayers can get information about their refunds.

"If people call during office hours, and have questions the recorded messages don't answer, they can stay on the line to talk to a staff representative," according to Margaret Loftis, Manager of the Tax Help section. The system gives instructions for using either touch-tone or rotary dial phones.

These lines will be open through April 30, 1992. The phone numbers are: From Portland: 243-2833, from Salem: 378-4988. From elsewhere in Oregon: 1-800-356-4222

There will be no toll-free service after April 30, but taxpayers may still call the Salem office for information.

The TDD number is 373-1826. This is not for voice use.

Loftis also reminds taxpayers to attach the labels which are mailed on tax packets or postcards to their returns for faster processing.

**PDC**  
PORTLAND  
DEVELOPMENT  
COMMISSION

## Commission Meeting

Date: January 15, 1991  
Place: Portland Building  
1120 SW Fifth Ave., 11th Fl.  
Portland, OR  
Time: 10:00 a.m.

Commission meetings are open to the public. A complete agenda is available at PDC. Call 823-3200.

PDC is the City of Portland's urban renewal, housing and economic development agency.

## Free Health Screenings For Seniors (Age 55 +) Offered At

### Neighborhood Sites

February 7, 1992, Peninsula Senior Center, 7508 N. Hereford, 9 a.m. to noon. Please call 289-8208 to schedule appointment.

February 14, 1992, Clay Tower, 1430 SW 12th, 9 a.m. to noon. Please call 222-7467 to schedule appointment.

February 21, 1992, Hollywood Senior Center, 1820 NE 40th Ave. 9 a.m. to noon. Please call 288-8303 to schedule appointment.

February 28, 1992, Mittleman Jewish Community Center, 6651 SW Capital Hwy., 9 a.m. to noon. Please call 244-0111 to schedule appointment.

Among the services at the screenings are blood chemistry tests which include cholesterol, glucose, and amelia measurements, blood pressure, lung function and hearing testing. Vision and glaucoma assessments, nutritional counseling and foot care evaluation are also usually offered. Appointments are necessary and may be made by calling the screening site. There is no charge for the screenings which are funded by Legacy Health System hospitals and healthcare organizations.

## Older Women's League

On Saturday, January 11, from 10:00 a.m. to noon, mid-life and older women are invited to the Portland Chapter of the Older Women's League (OWL) at 2145 N.W. Overton.

The topic will be "TAX REFORM: How It Could Impact Older Women's Issues." Speakers will be John Mullen, Co-Chair, Human Services Coalition of Oregon, and a representative from the Bradley-Angle House. The meeting is open to the public at no charge.

No-host coffee is available. There is ample street parking. There is wheelchair accessibility. Tri-Met available on NW 12th or NW 23rd. Call 245-4271 for directions or information about OWL.

**Advertise IN THE OBSERVER**

## Cold-weather goods needed

As winter nears, blankets, heavy coats and other cold-weather clothing are once again atop our list of desperately needed items. Among the other needs: workboots, rain gear and tents (for the homeless), blankets, pillows, bedsheets, baby blankets, pots, pans, dishes, kitchen utensils, tables and chairs, chests of drawers.

For details: 284-6878.

GREGORY P. OLIVEROS

## Attorney at Law

Civil & Family Law  
Chapter 7 & 13  
Bankruptcy

Licensed To:

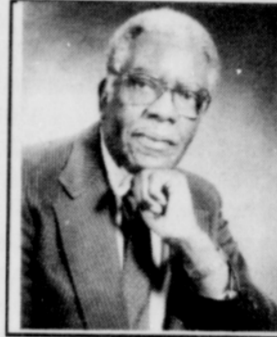
Assist you with your legal concerns  
Protect your legal rights

Convenient Lloyd Center Location

2161 N.E. Broadway  
Portland, Oregon 97232  
282-7285

## Progressive Realty, Inc.

317 NE Killingsworth St.  
283-4542 Fax 283-2977



Progressive Realty is strategically located in inner North/Northeast Portland. We are your Neighborhood Realtors, we live in the neighborhood, we know the real estate market out there. We are professionals equipped with tools and Agents to serve your neighborhood in both buying and selling real estate.

We contend that it is not necessary for the North/Northeast neighborhoods to take the neighborhood out of the neighborhood for buying and selling Real Estate. There are other great Real

Estate Companies in Portland, but Progressive Realty is located in the neighborhood and can give you better service. We care about our neighborhoods and strive to circulate moneys earned at least two to three times in the neighborhood before leaving it.

Why not give Progressive Realty a chance to handle all your Real Estate needs. Call C.F. (Cliff) Richardson or any of the Agents in the company.

## BOSTON'S MINI MARKET NEEDS YOUR SUPPORT!

PLEASE SUPPORT YOUR COMMUNITY STORE IT'S A MUST!

PLEASE REFRAIN FROM DRINKING ON THE STORE GROUNDS AND ON THE OLD FRED MEYER PARKING LOT. IT CAUSES MANY UNNEEDED PROBLEMS.

COME BY FOR ALL YOUR SHOPPING NEEDS. WE WORK WITH OLCC.

LOCATED AT 726 N.E. KILLINGSWORTH  
**282-6776**

## Transition Home Opens In Northeast Portland

Give Us This Day Inc. has announced the opening of the new Transition Home for high risk female adolescents (ages 12-18). The home is occupied by the young women on a short term 90 day program, until they are reconciled with their families, become emancipated or learn independent living skills.

Multnomah County, with the efforts of commissioner Gary Hansen donated the house to Give Us This Day Inc.

Extensive remodeling was done in order for the house to be liveable. Volunteers who gave their time on this project were: Hartley Oil Co., JJ Lock Service, Michael Hunter, Seaside River of Life Community Church, Elder Willie Castle, Floyd Mitchell and Rev. Clay Drayton.

"In the Transition Home program there are house rules to follow, chores to do, homework to do in addition to volunteer work. Basically, our objective is for the young women to become more responsible, productive citizens in our community," says Rev. Joshua Phillips, Administrator of Give Us This Day, Inc.

Give Us This Day, Inc. was founded in 1979 providing family counseling. Help for unwed mothers began in 1980. The Extended Family Homes Program for high risk adolescents began in 1985, and was later adopted as a model program by the State of Oregon Children Services Division.

To operate the Transition Home, Give Us This Day welcome donations of furniture, clothing, bedding, and kitchen items. For more information regarding the program, contact Renee Watson-Taylor, Program Director at 288-4335.

# Safeway Brands Stock-Up!!

**SAFEWAY**



Ad Prices Good January 8 through January 14, 1992 At Safeway.

## Lucerne 2-Lb. Cheese Loaf

Choose from Mild Cheddar, Medium Cheddar, Monterey Jack, Natural Colby or Mozzarella cheese.

Reach for the brands that save you more!

**\$ 3.66 Ea.**

No Limit! Enjoy Lucerne Quality Today!

Look In This Week Magazine for your Safeway Shopping Guide for a complete list of specials on sale this week at Safeway!

**This Week**  
MAGAZINE

**WESTERN UNION**

The Fastest Way To Send Money....Available In All Safeway stores in Oregon & S.W. Washington.