

# CLASSIFIEDS

Advertising  
Employment  
Bids/Sub-Bids

## PLANNER/ANALYST

\$2131 - \$2835 MONTHLY

Oregon State Aeronautics Division seeks applicants for a position in Salem. Responsible to intergrate aviation planning into the Oregon Transportation Plan and manage the Oregon Airport Improvement Plan. Successful candidates must have two years of experience in aviation administration, aviation planning, or transportation planning; AND a bachelor's degree in Planning, Public Administration, Social Science, or a closely related field; OR an additional three years of pertinent experience. To apply, contact ODOT personnel at (503) 378-6281 for an application packet. Applications and test responses must be returned by 5:00 p.m., June 19, 1991. AA/ EEO Employer

## FIREFIGHTING TRAINING OFFICER

Thurston County Fire Dist. Three(Lacey, WA)

Plans, develops & evaluates the training program for the fire district; develops budgets and monitors expenditures for the training program. Minimum 2 years experience in fire service with successful experience in project management. EMT-D certification within first year of employment and valid driver's license required. Salary range:\$2476-\$3334/mo. Closing date: June 10, 1991. To receive an application packet contact Thurston County Fire Dist Three, 5608 Pacific Ave, Lacey, WA or Call (206) 491-2410. Completed applications must be submitted to: Thurston County Fire Dist Three, Attn: Civil Service Examiner, PO Box 3366, Lacey, WA 98503. Equal Opportunity Employer

## MECHANICAL DESIGNER

\$2153-\$2889 MONTHLY

Oregon State Highway Division seeks applicants for a position in Salem. Responsible to design mechanical systems and components for moveable bridges. Requires a Bachelor's degree in mechanical engineering, AND one year of experience in mechanical engineering; OR four years of experience in mechanical engineering. To apply, contact ODOT Personnel at (503) 378-6281 for an application packet. Applications and test responses must be returned by 5:00 p.m., June 21, 1991. AA/ EEO Employer

## CASE MANAGER/ THERAPIST

Working with the chronically mentally ill in a day treatment program. MSW or master's degree in human services required. Send resume by 6/14/91 to: Conquest Center, 5305 N.E. M.L. King Jr. Blvd., Portland, OR 97211. EOE

## PLANNER ASSISTANT PLANNER

City of Wilsonville, Oregon Salary Range: \$1,990-\$2,397 per month depending on qualifications, plus excellent fringe benefit package. Wilsonville is a progressive, rapidly growing city located in the Portland metro area. Position requires degree in planning or a closely related field and minimum two years experience in land use planning. Send letter of application, resume and three work-related references to: Dee Thom, Administrative Assistant, P.O. Box 220, Wilsonville, Oregon 97070. Closing date is July 5, 1991. This position is subject to final approval by the City Council. The City of Wilsonville is an equal opportunity employer.

## TYPISTS

Excellent home income addressing labels. Details, send self-addressed stamped envelope. Honey, Box 6509-T, Charlottesville, VA 22906

## PARKS/Open Space Prgrm Mgr

**Willamalane Park & Rec Dist**  
The Parks & Open Space Program Mgr coordinates, supervises & evaluates, all of the maintenance, repair & replacement activities of the parks, grounds & open space components of the District's Park, Recreation Facility & Open Space System. Must be able to train & supervise parks personnel. Bachelors degree in Park Resource Mgmt, Horticulture, or related field; & 3 yrs exper in a park, maintenance or horticulture position with some supervisory exper; OR any satisfactory combination of exper & training which demonstrates the knowledge, skills & ability to perform the duties. \$26,256-\$32,820/yr + benefits. Full job description & application at Willamalane Park & Recreation Dist, 151 North 4th St, Springfield, OR 97477. Application Deadline June 14, 1991. Equal Opportunity Employer

## Resource Teacher, Migrant Education Project

(6 hrs/day - 5 days/week) 1991-1992 School Year

Implement instructional and support services to Chapter I-Migrant students residing in East Multnomah County attending schools in grades K-12.

- Qualifications:
- Valid Oregon Teaching Certificate with grade level authorization K-12.
  - Three years teaching experience.
  - Linguistic and cultural expertise relative to the ethnic group being served (Spanish).
  - Valid driver's license with own transportation and driving record acceptable to carrier.

Call 257-1510 (24 hr job information) for salary & closing dates. Required MESD employment applications can be obtained in person at MESD's Recruitment Office at 11611 NE Ainsworth Circle, (Airport Way), hours are 8:00-5:00, Monday thru Friday. To receive application materials by mail, please send a self-addressed, stamped envelope indicating position of interest to Multnomah Education Service District, Attn. Recruitment Office, PO Box 301039, Portland, Oregon 97220-1039. An Equal Opportunity Employer & Drug Free Work Place

## ECONOMIC OPPORTUNITY COMMITTEE OF CLARK COUNTY, INC.

**TEACHERS** for Therapeutic Child Care/Head Start Program. Bachelors degree; minimum AA in ECE required. 1 yr. experience with 3-5 yr. olds in ECE setting, developmental orientation, daily planning, supervising adults. 31 hrs/wk. Beginning salary \$9.51/hr., 45 wks/yr., July - June. To be considered, completed applications must be received no later than 4 p.m., June 6, 1991. Employment expected to begin July 8, 1991.

Positions require dependable automobile, insurance, valid driver's license. Obtain application, position announcement and job description 9 a.m. - 4 p.m., Mon-Fri., EOC Office, 10621 N.E. Copley Dr., Vancouver, WA 98662, (206) 896-9912. EEOC/AA

## Chrysler Reports Increase In Number Of Black Dealers

Chrysler Corporation announced today an increase in the number of black dealers selling Chrysler products in 1990 compared to 1989.

The number went from 84 at the end of 1989 to 86 in December 1990, according to Cecil Ward, manager of Retail Dealer Development for Chrysler. The program recruits and trains minorities who want to become Chrysler dealers.

"The increase is small but significant," said Ward. "The car market was so soft last year, particularly the last six months, that we would have been happy just to maintain our black dealer count. We're very pleased with the increase."

In 1980 there were seven black Chrysler dealers in the U.S., and eight when the retail Dealer Development program began in 1983. Since then, 61 minority members-including four women-have graduated from the Chrysler program. Chrysler now has 151 minority dealers around the country, including blacks, Hispanics, Orientals and American Indians. Of the 11 minorities currently in training, 10 are black, one is Hispanic.

"Our dealers tell us we must be doing something right," said T.R. (Ted) Cunningham, Chrysler executive vice president-Sales & Marketing. "Chrysler is building a solid base of black dealers."

## BUSINESS

**PACIFICORP FINANCIAL SERVICES**

## EQUIPMENT RESEARCH MANAGER

PacificCorp Financial Services, Inc. (PFS), part of the \$12 billion PacificCorp family of companies, provides a broad spectrum of financial services. As a major diversified financial services organization, BOLD describes our attitude, ENTREPRENEURIAL describes our culture, and CHALLENGING describes our opportunities.

PFS is actively seeking an Equipment Research Manager with responsibilities including equipment research analysis to determine the suitability of equipment for lease, determination of fair market value for buyout negotiations and early repossession, and inspection of all leased assets.

Our targeted individual will have a bachelor's degree in business, financing, accounting, or engineering, or the equivalent in training and experience. Background should include progressively responsible equipment research and valuation experience for a broad range of equipment types.

PFS offers an environment that encourages growth and professional development. If your goal is to be affiliated with a fast paced, high energy, and dynamic organization, then PFS is for you! Qualified candidates please send resume and salary requirement to:

Lisa Packard  
Human Resources Department  
PACIFICORP  
FINANCIAL SERVICES  
P.O. Box 1531  
Portland, OR 97207  
Equal Opportunity Employer

## EMPLOYMENT CITY OF PORTLAND

Source Control Manager - to \$56,763/yr. For more info/closing dates, call (503) 823-4573 (24 hr job information). No resumes please.  
**BUREAU OF PERSONNEL**  
1220 S.W. 5th Ave., First Fl.  
Portland, OR 97204  
apps also available at:  
**URBAN LEAGUE**  
10 N. Russell  
Minorities, females and disabled encouraged to apply

## CREED OF THE BLACK PRESS

The Black Press believes that America can best lead the world away from social and national antagonisms when it accords to every person, regardless of race, color, or creed, full human and legal rights. Hating no person, fearing no person, the Black Press strives to help every person in the firm belief that all are hurt as long as anyone is held back.

**For Best Results Advertise in the Observer**

ALL ROADS LEAD TO...



**GRESHAM**



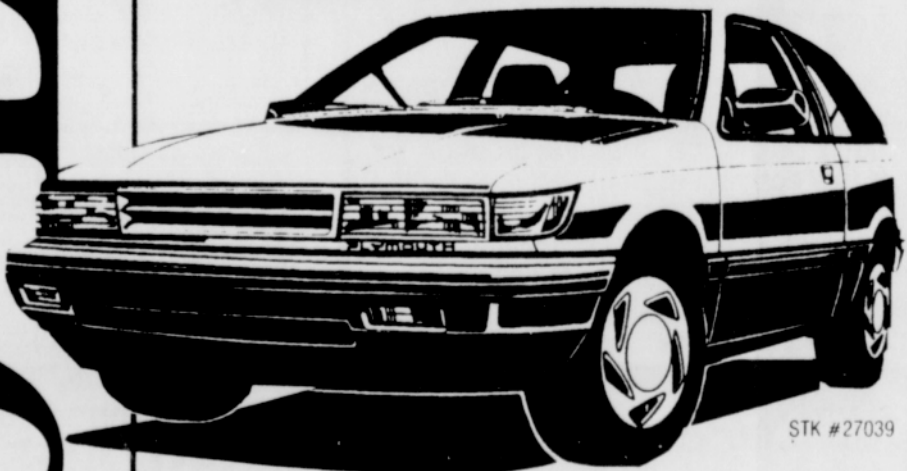
YOUR AFFORDABLE TRANSPORTATION CENTER

Chrysler · Plymouth

## ROSE FESTIVAL SELL-A-BRATION

PLYMOUTH BRAND NEW 1991  
**\$5995**

GREAT FUEL ECONOMY



STK #27039

**20 IN STOCK NOW**

**\$119<sup>00</sup> PER MONTH**

Payments with cash or trade worth \$545.44, 60 months at 10.99% APR on approved credit.

## EQUIPMENT

- Power Assisted Brakes
- 5 MPH Impact Bumpers
- Console
- 1.5 Liter Engine
- Stainless Steel Exhaust
- Halogen Headlights
- Inside Hood Release
- Rack & Pinion Steering
- Restraint System
- 36/36 Bumper to Bumper Warranty

✓ THESE VALUES... "WE'LL BEAT ANY DEAL"

"HURRY, THESE GUYS ARE DEALING"

ALL UNITS WILL BE CLEARLY MARKED DOWN!

**1975 EAST POWELL GRESHAM OREGON**

★ All new cars are priced after rebate, all subject to prior sale.