



ENTERTAINMENT



WALT DISNEY'S WORLD ON ICE
PRODUCED BY KENNETH FELD

Starring **Peter Pan**
ALL LIVE!

**Wed. FEB. 27
thru Sun. MAR. 3**

MEMORIAL COLISEUM

★PERFORMANCES★

Wed. FEB. 27..... 7:30PM

Fred Meyer Spirit KATU 2

FRED MEYER/KATU FAMILY NIGHT
ALL TICKETS \$3.00 OFF
with coupons from FRED MEYER

Thu. FEB. 28..... 7:30PM*

Fri. MAR. 1..... 4:00PM†... 7:30PM

Sat. MAR. 2... 12NOON... 3:30PM... 7:30PM

Sun. MAR. 3..... 1:30PM..... 5:30PM

† **12 KPTV KIDS' SHOWS**

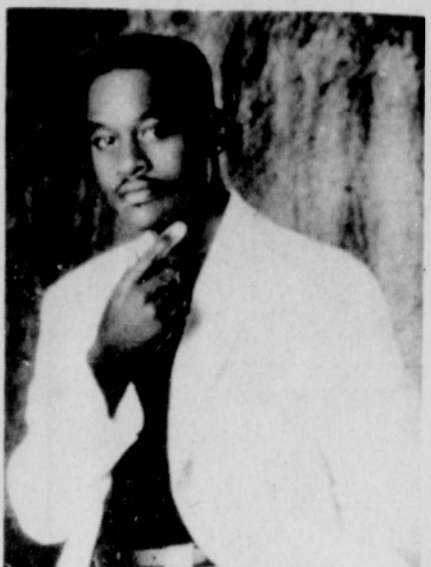
SAVE \$2.00
KPTV ON KIDS UNDER 12!

* **8 KGW MICKEY HIP PACK NIGHT**

One FREE Mickey Hip Pack will be given to each child under 12!

3 WAYS TO GET YOUR TICKETS
IN PERSON: MEMORIAL COLISEUM BOX OFFICE and all G.I. JOE'S locations including CIVIC AUDITORIUM and PCPA BOX OFFICES (service charge added at outlets)
BY PHONE: (503) 248-4496 (service charge added to phone orders)
BY MAIL: Send self-addressed, stamped envelope with check or money order payable to WALT DISNEY'S WORLD ON ICE, Memorial Coliseum, P.O. Box 2746, Portland, OR 97208 (\$1.50 service charge per mail order)
Information: (503) 248-4496
Group Rates: (503) 235-8771 or (503) 230-6702
*****YOUR BEST ENTERTAINMENT VALUE!*****
ALL SEATS RESERVED \$7.50 - \$9.50 - \$11.50 PRICE INCLUDES TAX
©Disney - A Holiday On Ice Presentation - ©1990 Ice Follies and Holiday On Ice, Inc.

Johnny Gill, Bell Biv DeVoe And Keith Sweat



(Co-Headline Five Month 80 Show North American Tour)
Motown's multi-platinum R&B and pop sensation Johnny Gill co-headlines with multi-platinum recording artists Bell Biv DeVoe and Keith Sweat for an unprecedented 80-show five-month tour which kicked off December 19 at the War Memorial in Syracuse, NY. The 1990-91 tour will include multiple concert dates at L.A.'s Forum and Madison Square Garden, as well as other major venues, for a spell-binding show that will delight fans throughout the country.
Johnny Gill's singles from his self-titled Top Ten album, "Rub You The Right Way," "My, My, My" and his current pop smash "Fairweather Friend," have torn up the charts. All

three were Number One on the R&B charts and soon will share Top Ten success on the pop charts as his current release continues to rocket to the top of the Hot 100.
Johnny Gill is so hot that Janet Jackson tapped him to be her special opening act on her "Rhythm Nation" European tour where his performances blew away audiences at sold-out concerts at Wembley and throughout Europe. Now Gill will deliver his powerful eye-catching performances to American audiences as he embarks on an unprecedented 80-show tour with New Edition band-mate Bell Biv DeVoe and Keith Sweat.
Gill's self-titled album has been hailed as a work of art, combining the talents of the two hottest producing teams in the industry-Jimmy Jan & Terry Lewis, as well as L.A. & Babyface. (Jam & Lewis are best known for producing Janet Jackson's multi-platinum "Control" and "Rhythm Nation.") LA & Babyface have produced Number One hits for Bobby Brown, Paula Abdul and Pebbles among others) Johnny Gill showcases the singer's wide range of vocal talents throughout the album, especially the ballads. His performances harken memories of Sam Cooke ("You Send Me," "Twistin' The Night Away") and Otis Redding ("Sittin' On The Dock Of The Bay"). "He's the greatest singer I've ever worked with," exclaimed Babyface.

World Beat Reggae House Rap Blues Soul Gospel Folk Jazz



USED BUY TRADE CD'S RECORDS NEW
TAPES SELL

2225 N.E. Broadway 503-284-4828 Portland, Or. 97232

Sweat, Gill Impress Coliseum Crowd

BY TONY WASHINGTON
On February 18, 1991, Platinum-album award-winner Johnny Gill performed at the Memorial Coliseum. Gill's style was one that was very much appreciated by the Portland audience. Performing "My, my, my", "Rub You the Right Way" and others, Gill reflects on his early development his relationship with the gospel, in which it was done beautifully in his music. Such a style, such grace Johnny Gill showed all of that! There's a definite future by Johnny Gill. Also appearing were Keith Sweat-Sweat also put on a dazzling performance. Singing love songs to Portland's audience seem to hypnotize the crowd. He is something to see. Keith Sweat will definitely make you sweat!

BLACK HISTORY MONTH ON OPB



RADIO
THE NOON REPORT—MALCOLM X: A RETROSPECTIVE
A one-hour special remembering the life of Malcolm X, produced after his assassination in 1965.
Wednesday, February 20
12 PM on 91.5 FM

TELEVISION
THE AMERICAN EXPERIENCE: ADAM CLAYTON POWELL
From Harlem preacher to powerful congressman to political memory, his influence was legendary.



Thursday, February 21 • 10 PM on channel 10

It's Where You Belong OPB

A mesmerizing evening of songs, poems and stories with
MAYA ANGELOU



Best-selling author of "I Know Why The Caged Bird Sings"
Poet, educator, historian, actress, playwright, civil rights activist, producer, director
Wed., March 20, 8:00 PM
Earle A Chiles Center
University of Portland
TICKETS ON SALE FEB 22ND
Tickets \$7.00 adults, \$5.00 students (with ID); on sale at all GI Joe/Ticketmaster outlets or call
283-7525

TOMORROW

WORLD WRESTLING FEDERATION HEAVYWEIGHT CHAMPIONSHIP TITLE MATCH
Thursday, February 21, 7:30 PM - Memorial Coliseum

ULTIMATE WARRIOR vs (CHAMP) SGT. SLAUGHTER
IN A STEEL CAGE!

PLUS TAG TEAM CHAMPIONSHIP TITLE MATCH
HART FOUNDATION (Champs) - vs - POWER & GLORY
WWF INTERCONTINENTAL TITLE MATCH
ROWDY RODDY PIPER - vs - MR. PERFECT (Champ)

Plus
Jake the Snake - vs - Rick "The Model" Martel
Davy Boy Smith - vs - The Warlord
The Bushwhackers - vs - The Orient Express

TICKETS ON SALE NOW \$16.50, \$13.50 and \$11.00
Available at Coliseum Box Office, G.I. Joe's and all Ticketmaster outlets.

WATCH WWF ON KPTV - Channel 12, Saturdays at 11:00 AM

...All In The March Issue Of Essence

ESSENCE magazine surveys the corporate landscape world in its annual, CAREERS issue (due on the newsstands March 19).
Heading the list of business and career-oriented features is "High Profile Style." ESSENCE selected ten African-American corporate stars, who have built careers with hard work and business savvy. We dressed them in the most colorful corporate wear and photographed them in grand style at New York's World Financial Center.
"Hard-Hatted Women" is a look at blue-collar jobs that can mean bucks for Black women. The special ten-page whole-life makeover section transforms the life of a single working mom from overburdened to overjoyed.
The legendary Queen of Rock 'n Soul Patti LaBelle, graces the cover of this power packed issue of ESSENCE. "Girlfriend," a visit with the star of stage, screen and recordings in her Philadelphia home, proves that she's a regular "girlfriend"-who's just like any other wife, mother and homemaker.
On the 1-900-GO-ESSENCE interactive telephone line, readers can find out more about Patti LaBelle on the "People of Note" line, spend "Quiet Time" with editor-in-chief Susan L. Taylor, pick up health and fitness tips or voice their opinions on the subject of man-sharing.

KEY LARGO
31 NW First 223-9919

Wed. 20
LITTLE WOMEN
Thurs. 21
BLUBINOS
Fri. 22
BODY & SOUL
Sun. 23
MARGO TUFO
Mon. 24
HEART OF DARKNESS
Tues. 25
SHELLY & THE FIREWORKS

ROMEO & Juliet

Jefferson High School
February 28, March 1, 2
8:00 PM Auditorium
Tickets: \$5 Adults, \$4 Students/Seniors

Best Cash Prices

DAD'S OIL SERVICE
Heating Oils

104 NE Russel St.
Portland, OR 97212
(503) 282-5111

Speedy Service
Friendly
Call for Quote!!!

Support Our Troops!