

ALLEN TEMPLE CME CHURCH
 Corner of 8th and Skidmore
 Sunday School 9:15 a.m.
 Sunday Worship 11:00 a.m.
 Christian Youth Fellowship 6:00 p.m.
 (second and fourth Sundays)
 Phillip S. Nelson (Pastor)

THE MOUNT OLIVET BAPTIST CHURCH
 N.E. First & Schuyler • 284-1954
 John H. Jackson, Minister, M.Ed., M.D.
 9:30 A.M. Church School
 11:00 A.M. Congregational Worship
 5:00 P.M. Vesper Service
 10:00 A.M. Baptism Fourth Sunday
 11:00 Communion Each First Sunday
 The American Baptist Convention, American Baptist Churches of Oregon: Lott Carey Foreign Mission Convention: National, Oregon, Portland Ecumenical Ministries, American Bible Society, M.&M. Board.

YOU ARE WELCOME TO WORSHIP AT
 84 N.E. Killingsworth • 281-0499
 "A warm spirit of fellowship always"

The Ark of Safety Church of God in Christ
 To the glory of God
 "The Ark of Safety" Bishop UV Peterson, DD, Bishop-Archdeacon
 the Bible says...
 Follow peace with all men, & holiness without which no man shall see the Lord

Tuesday: Bible Band 7:30 p.m.
 Thursday: Choir Rehearsal 7:00 p.m.
 Sunday: Sunday School 9:15 a.m.
 Morning Worship 11:15 a.m.
 Y.P.W.W. 6:30 p.m.
 Evangelistic Worship 8:00 p.m.
 Tuesday-Friday: Noon Day Prayer
 Friday: "The Pastor Speaks" 7:30 p.m.
 Saturday: Morning Prayer 9:00 a.m.
 "Showers of Blessings," Inevitable, Sunday morning, 10:00 A.M. Session KAAR 1:00AM On

INTERESTING FACTS
 brought to you every week by
AMERICAN STATE BANK
 MEMBER FEDERAL DEPOSIT INSURANCE CORPORATION

One-fourth of the 206 bones in the human body are located in the feet.

The Mayan Indians filed their front teeth to points and drilled holes in them so they could be embellished with precious gems. They filled cavities in their teeth with pieces of jade.

A car operates at maximum economy, gas-wise, at speeds between 25 and 35 miles per hour.

We do not do business with South Africa.
ASB American State Bank
 AN INDEPENDENT BANK
 Head Office: 2737 N. E. Union, Portland, Oregon 97212

ARMOUR BACON PAN SIZE
 THE BACON LOVER'S BACON
\$1.29
 SAVE 40% 12 oz. PKG.

CHEDDAR CHEESE
 KIENOW'S MEDIUM AGED CHEESE OF THE MONTH
\$2.39
 POUND

LUNCH MEATS
 6 VARIETIES ARMOUR
99¢
 SAVE 30% 10 to 12 oz. PKG.

KIENOW'S SHOP
 FOR BRANDS you know VARIETIES you like SIZES you want

The Friendliest Stores in Town Since 1908

• 4811 S.E. Millwaukie • 115th & S.E. Morrison
 • 315th & East Burnside • 232nd & N.E. Hawthorn
 • 132nd & N.E. Olney • 350th & S.E. Division
 • N. Lombard at Oswego • 232nd & West Burnside
 • Calagah Hills Plaza • Luke Oswego 90 & A
 • 1123rd on S.E. Division • King City
 • Oak Grove
 MADE IN UNITED STATES

RELIGION UPDATE
 by Dee Armstrong

"THE PRAYING HANDS"

The "Praying Hands" are much more than just a work of art. They are the "soul's creation" of a deeply thankful heart — they are a priceless masterpiece that love alone could paint.

And they reveal the selflessness of an unheralded saint—

These hands so scarred and toilworn, tell the story of a man who sacrificed his talent in accordance with God's plan for in God's plan are many things man cannot understand, but we must trust God's judgment and be guided by His hand—

Sometimes He asks us to give up our dreams of happiness. Sometimes we must forego our hopes of fortune and success—

Not all of us can triumph or rise to heights of fame, and many times what should be ours, goes to another Dame—

But he who makes a sacrifice, so another may succeed, is indeed a true disciple of our blessed Saviour's creed—

For when we "give ourselves away" in sacrifice and love, we are "laying up rich treasures" in God's Kingdom up above—

And hidden in gnarled, toilworn hands is the truest Art of Living, achieved alone by those who've learned the "Victory of Giving"—

For any sacrifice on earth, made in the dear Lord's name, assures the giver of a place in Heaven's Hall of Fame—

And who can say with certainty where the greatest talent lies, or who will be the Greatest in Our Heavenly Father's eyes!

To my mother, Dorothy Sue Jordan, may God bless you always and keep you in his care, Happy Mother's Day.

Poem by Helen Steiner Rice

This week's update with good for thought "For God so loved the world, that he gave his only begotten son, that whosoever believeth in him should not perish, but have everlasting life." St. John 3:16



Bertha Foster

A Special Meeting of Appreciation was held in the honor of Msn. Bertha Foster, Bishop's wife on April 6th of this year. "This Is Your Day" which was the theme of the meeting.

The family of Jurisdiction #2 wish to express their thanks "to everyone that came out and helped to make this day a success, without your presence it would not have been so!" Chairlady Msn. E. Franklin of Powder House C.O.G.I.C., Dist. #2; the meeting was held at St. Paul C.O.G.I.C. Dist. #2 located at 2859 N.E. Rodney. Host pastor; Bishop C.J. Foster.

"Come Spring into Summer Fashion Show" was held this past Saturday at Williams Temple C.O.G.I.C., sponsored by Sis. Matti Mullen, President of the Women's Sewing Circle. All fashions were handmade. Sis. Matti Mullen would like to thank all of her sewing circle members for their cooperation and to everyone who attended.

COMMUNITY CHURCH of GOD
 202 N.E. Skidmore
 281-5578
 284-5559

Services:
 9:45 a.m., Sunday School
 11:00 a.m., Morning Worship
 7:00 p.m., Evening Worship
 7:00 p.m. Wednesday, Prayer Meeting
Victor R. Brown, B. Theology, Pastor
 Dr. Hazel L. Brown Sr., D.D., Assistant Pastor

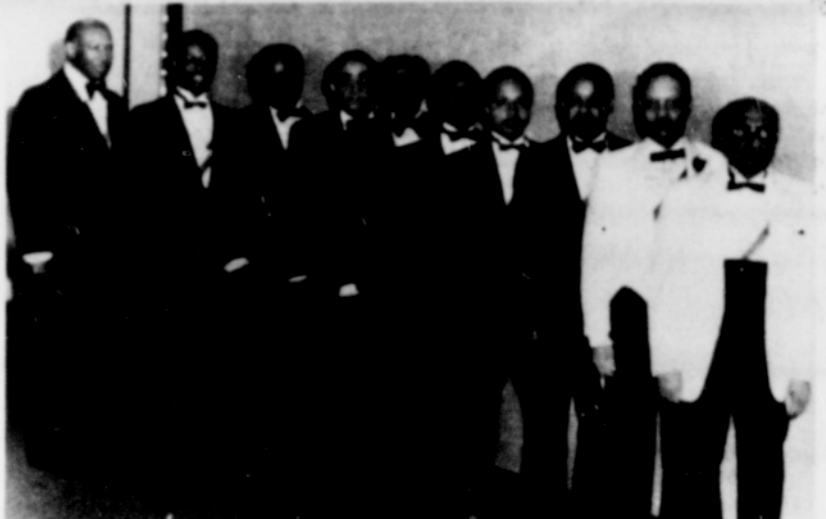
SMILE — GOD LOVES YOU

ADVANCE PLANNING
 IT CAN BE DONE BY:

1. INSURED FUNERAL PLAN
2. FUNERAL TRUST PLAN

CONTACT ONE OF OUR COUNSELORS FOR DETAILS

VANN & VANN FUNERAL DIRECTORS
 5211 N. Williams Ave.
 Telephone 281-2836



Kappa Fraternity-Black & White Ball

(Left to right) A.R. Rae, Lt. Strategus; D.L. Harris, Polemarch (Delta Alpha); O.N. Haynes; J.J. Nunn, Keeper of Exchequer; W.H. Randle, Board of Direct.; T.R. Vickers, Polemarch, Alumni Chapt.; W. McClendon, Vice Polemarch (Delta Alpha); E.W. Green; J.O. Brooks, Keeper of Records; E.S. Hill, Board of Direct. Not in Picture: P.W. Dixon, E.C. Hunter, T.C. Maney, and H.H. Smith.

Announcements

The Alberta District Meeting of the Churches of God in Christ is being held this week, May 5th thru 9th, at Greater Peace C.O.G.I.C. located at 4009 N. Missouri. Pastor; Elder Ervin Wilson. Come out and join us truly your soul will be blessed. Jurisdiction #1. Presiding Superintendent Elder E. Wilson, Presiding Missionary; Msn. O. Thomas.

Gospel Extravaganza — May 16th, William Temple C.O.G.I.C. at 341 N.E. Hancock, 9:30 p.m. Host pastor; Elder Mack L. Walker.

Mt. Tabor Neighborhood Urgently Needs Meals-On-Wheels Delivery Volunteers

Volunteers are urgently needed to deliver meals for Loaves & Fishes' Meals-on-Wheels program. The need is especially crucial in the Mt. Tabor and Sunnyside neighborhoods.

All that's needed to help is a free noon hour, a car and a desire to help homebound elderly individuals. Interested volunteers should call 777-2424 for information.

SENIOR CITIZEN LAW WEEK

The week of May 19th has been announced Senior Citizen Law Week. On Monday, May 19th, 10:00 a.m. until 11:00 a.m. Attorney Kim Berlee Morrow of Legal Aide will do a presentation on consumer affairs: Contracts, door-to-door salesman, etc. The presentation will be held at 10 North Russell, Urban Plaza in our Multi-Purpose Room.

2nd Annual Sickle Cell Musical Big Success

The Portland Sickle Cell Foundation's 2nd Annual Gospel Musical held at Maranatha Church Saturday, April 26, 1986, was attended by over 1,000 concerned individuals. Guest speakers were Pastor D. Richardson of Prayer Center Church, and Commissioner D. Hayes of Mt. Scott Water District. The Director, Marcia Taylor spoke on "What is Sickle Cell Anemia", and was followed by Sue Carey with "My Child has Sickle Cell Anemia". Taylor states the offering exceeded the \$1034 raised last year, saying, "I am very grateful for the city-wide participation, the generous response received from the audience, and I was thrilled that the LesFemmes Debutantes, just young people spearheaded the offering with a \$100 contribution!" The featured guest choir was the outstanding Emanuel Apostolic Choir from Bremerton, Washington, who were present in the 1st Annual Musical Benefit held at Allen Temple in March, 1985. "Lord willing, next year I'd like to feature Bible Temple along with a few other choirs", Taylor stated, "they were amazing!"

Sickle Cell Anemia (SCA) is a hereditary blood disease striking over 50,000 Americans in the United States for which there is no known cure. One out of every 10 Blacks carry the gene for this painful disease. Those affected by various forms of this disease are Hispanics, Greeks, Asians, and others with a Mediterranean background, and a few Caucasians as well. The mission of the Portland Sickle Cell Anemia Foundation is to serve those suffering with severe hemoglobinopathies, to promote public awareness of the disease, identify, carriers, and those suffering with the disease through free diagnostic testing, (electrophoresis blood test) to educate and counsel them, and to foster more sensitivity to SCA clients by medical professionals and others coming in contact with them, and to offer limited emergency assistance to SCA victims. "Both genetic and family counseling are program components of the Foundation by qualified physicians and social workers, which is offered both prior to diagnosis, as well as follow-up counselling to avoid mass hysteria upon learning that one is a carrier or affected by the disease of SCA", states Taylor. Peer counseling is offered by trained individuals who have first-hand experience with SCA in their family. Taylor, an ordained Evangelist, says "It's so wonderful to see the clergy doing their part to minister to the needs of the diseased". Taylor states she is greatly inspired by her own daughter who has sickle cell anemia, but has recently returned to college, and volunteers her time as a peer counselor and other office duties when she is able to.

The Foundation is greatly in need of all kinds of volunteers. Among them are typist, people to assist with newspaper drive pickups, trainees for sickle cell anemia speakers bureau, and committee workers. She is hoping that a truck will be donated soon to assist them with their on-going newspaper drive which helps to replenish the emergency patient fund, (established for clients' continuing education, prescriptions and for life's emergency needs), as the average SCA client is on SSI or Social Security and their medical bills are staggering. Those wishing to save their newspaper and drop it off may do so at two locations, but must send in their receipts and tell the attendants the paper is for the Portland Sickle Cell Anemia Foundation. The Sunflower Recycling Company, located at 2230 SE Grand, at Division below the McLoughlin Viaduct, and the drop is 701 N. Hunt (you must turn on Albina entering only from Columbia Blvd. near Nabisco Company. Those wishing to donate supplies, postage or make monetary contributions may mail them to 3802 N.E. Union Avenue, Suite 206, Portland, OR 97212, or call 249-1366. The Program has not been totally funded, but has been aided by Farwest Federal Bank, The Collins Foundation, and The Oregon Community Foundation, and several others, and a supportive board.

Tapes of the musical are being sold at \$6 per set of two. For your set, please contact the Foundation at P.O. Box 11124, Portland, OR 97211 or 3802 N.E. Union Avenue, Suite 206, Portland, OR 97212. Make all checks payable to PSCAF, Inc.

A Public Service of the Portland Observer

Albina Ministerial Alliance
 284-6023

Emmanuel Evangelical Baptist Church
 3939 N. Mississippi Ave.

There will be a soul thrilling revival meeting and you are cordially invited to come and worship the Lord with us at the Emmanuel Evangelical Baptist Church beginning May 11, 1986 to May 25. Time 7:00 p.m. Preaching each night May 11 time 7:00 p.m. Rev. E. Jenkins and the Rev. James C.E. Faulkner and Rev. Chester Staples of Portland, Oregon. Come and bring a friend.

Pastor Rev. E.D. Cannon
 May the Lord bless you ...