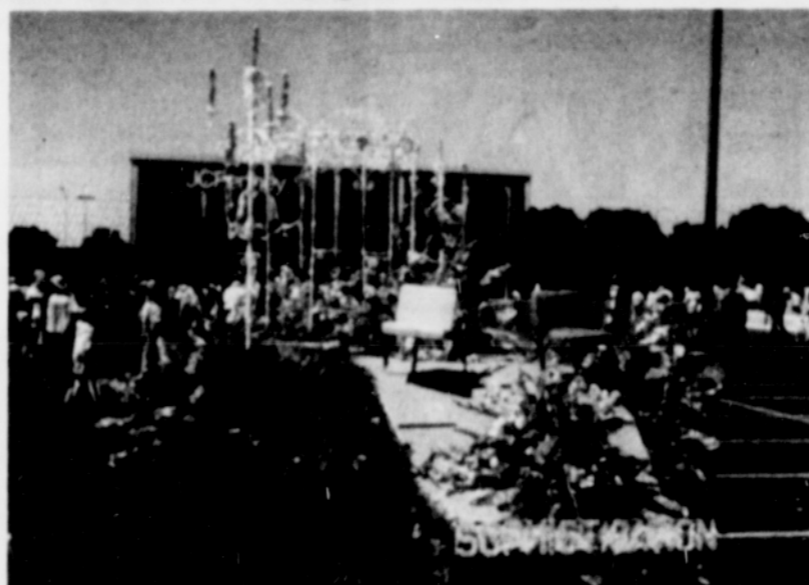


COMMUNITY FLOAT WINS SPECIAL MENTION AWARD



Portland's Miss Tan Pageant salutes the 1965 Grand Floral Parade with its entry, "Sophistication." the ornate canopy at the center of this floral creation is decorated with glad petals and is surrounded by a rose garden containing plu-mosa fern, baby's breath and red and yellow roses. Two large bouquets of gladiolus, carnations, mums and lilies add the splendor of color at the front and rear of this floral beauty. The lovely young women riding in "Sophistica-tion" are supporters adn former winners of the Miss Tan Pageant, including this year's 1964-65 winner, Miss Faye Wheatfall. Other winners from the 1960's, 70's and 80's pag-eants are Ms. Beverly Johnson, Ms. Mireille Jeannis, Ms. Laverne Davis, Ms. Tracey Clay and Ms. Mary Clisby. Community supporters include Ms. Theresa Stoudamire, Ms. Gena Adair and pageant director, Ms. Ronee Walker.



THE BANK THAT INTEGRATION BUILT



Good banking is more than just a black and white way of doing things.

At American State Bank, it's people of all colors and nationalities working together to offer you greater flexibility and more personal consideration than you'd expect to get anywhere.

In fact, we've earned a reputation for making an extra effort to help businesses which, like ours, were started by individuals with more determination than money. Chinese restaurants. A tennis club in Portland. A Vancouver Plush Pippin owned by a Hawaiian. A Portland construction equipment sales firm.

With a reputation like that, it isn't surprising that American State Bank is getting bigger every day. And so are our customers.

American State Bank

Main Office
2737 N.E. Union Ave.
Portland, OR 97212
282-2216

2nd & Yamhill
Branch
204 S.W. Yamhill
Portland, OR 97204
241-1937