

Community Profiles

by Linda L. Thompson

As you enter Emma's Kitchen, at 1329 N.E. Fremont, you are greeted with genuine southern hospitality and an atmosphere that one can not help but feel welcome and comfortable in. You feel that you are an important part of a large family and that dinner, snack, etc, have been prepared just the way you like and just for you.

Once you are seated in the spacious dining room area, you are able to choose from a large selection of traditional soul food (see weekly menu for selection and prices in *Portland Observer*). Emma says that she tries to keep the prices affordable so families, who other wise could not afford to eat out, can do so at Emma's Kitchen. Although it is not a charity restaurant, there are times when one can get an extra slice of cornbread or an extra serving of greens without cost. "I'd rather give it to someone who would enjoy it than to throw it away," Emma says.

Emma came to Portland about seven years ago after managing

several restaurants in Jackson, Mississippi. Once in Portland, she went to work for Mt. St. Joseph's Nursing Home. She then decided to make her dream a reality. With little money and a lot of determination, Emma's dream became Emma's Kitchen in late February, 1984. She is manager and master chef but is assisted by her daughter, Linda Thomas, and her husband, Lonzo. Emma has one daughter, Artie Mae Taylor, still living in Jackson, Mississippi.

Although she is very busy with her new prosperous business, she still finds time to attend her church, Vancouver Avenue Baptist, where she is a member of the Rachel Circle and a member of the choir. She also belongs to the Eastern Star.

When asked what advice she would give to someone who is trying to start their own business, Emma flashes her broad and warm smile and says, "Go after it. It doesn't take a lot of money, just desire, determination and hard work. Once

you get your business started, keep the 'golden rule' foremost in your mind at all times." She went on to say, "I am not trying to get rich off of Emma's Kitchen, I am trying to make a living, fulfill a dream and be a service to the community."



EMMA HARRIS

(Photo: Richard J. Brown)

you get your business started, keep the 'golden rule' foremost in your mind at all times." She went on to say, "I am not trying to get rich off of Emma's Kitchen, I am trying to make a living, fulfill a dream and be a service to the community."

Emma's Kitchen is closed on Mondays. Any other day of the week, you are welcome to go in and receive some "for real" southern cooked meals and southern hospitality, all presented to you by a "for real" one-of-a-kind lady at a one-of-a-kind restaurant.



Stan Kahn For Mayor

- Support small business
- Promote neighborhood development
- Increase livability and safety
- Limit downtown subsidies
- Oppose large-scale annexation
- Shelter the homeless

EMMA'S KITCHEN

SOUL FOOD

BREAKFAST	
2 Eggs, choice of bacon.....	\$2.50
or sausage, fried potatoes or grits, toast and juice.	
Donuts.....	30c
LUNCH/DINNER	
Gumbo (Good Tool).....	3.75
Homemade Soup.....	65c/Bowl
Chili (per cup).....	65c
Hamburger.....	1.25
Cheeseburger.....	1.50
Louisiana Hot Tamales.....	2 for 1.00
Rib Sandwich.....	3.00
Fish Sandwich.....	2.00
Hot Dog.....	1.00
Chili Dog.....	1.50
Hot Links.....	1.00

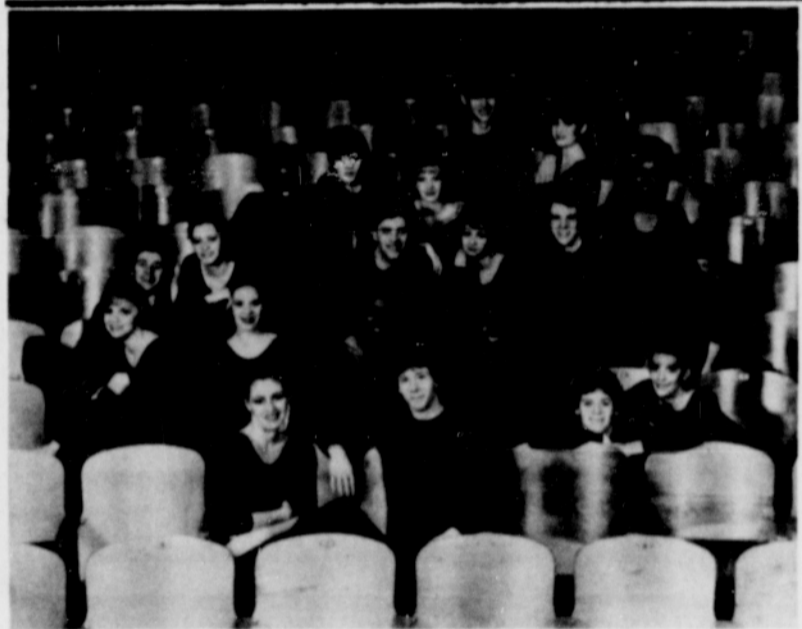
Cook's Choice Dinner.....	3.50
Rib Dinner.....	4.50
Fish Dinner.....	3.50



1329 N.E. Fremont • 281-2560

Tues. - Sat. 6 a.m. - 12 a.m., Sunday 1 p.m. - 12 a.m.

Closed Monday



Jefferson Dancers perform

The Jefferson Dancers will perform April 27th and 28th at 8:15 p.m., at the Jefferson Performing Arts Center located at 5210 N. Kerby Avenue. Tickets are \$5 for adults and \$4 for students and senior citizens. Tickets are available at all Meier and Frank Stores (except Lloyd Center) Stevens & Sons, Lloyd Center, and the PCC Bookstore (Cascade Campus).

Jefferson is a magnet high school in performing arts giving the option to study there to all of Portland's youngsters. Over 300 students are enrolled in Jefferson's nationally

recognized Dance Program which includes instruction in jazz, tap, modern, and ballet. Thirty sections are now offered to students from all over the city in grades nine through college. The professionally trained full- and part-time staff of 23 includes choreographers and dancers of national and international reputation, accompanists and costumers.

Dance is also taught at ten middle/elementary schools throughout Portland as part of Jefferson's Middle School Arts Program.

Bank names vice-president

Phillis R. Whitmore has been elected assistant vice president at the Benj. Franklin Federal Savings & Loan Association, according to G. Dale Weight, chairman of the board and chief executive officer.

Whitmore joined the thrift in July of 1972 in the loan processing department. She has earned four promotions and is currently a loan officer at Benj. Franklin's home office in downtown Portland.

Prior to joining the Benj. Franklin, Whitmore was with the Portland Metro Steering Committee and I.M.L. Freight Co.

A native of Portland, Whitmore graduated from Marshall High School and Western Business College. She has taken courses through the Institute of Financial Education. Benj. Franklin is the largest



PHILLIS R. WHITMORE

savings and loan in the Northwest and 25th largest in the United States. The firm operates 82 offices in the four states of Oregon, Washington, Idaho and Utah.

Cleveland High Break-off

Cleveland High School proudly presents the spectacular of 1984, the P.I.L. Break-off Championship Classics involving the most competitive breakers in the Portland Public School system. This event will take place on Wednesday, May 2nd at 7:30 p.m. in the Cleveland gymnasium. Selected students from Portland public high schools will demonstrate

their unique styles of breaking individually and in team competition—being judged by community professionals.

The winners will receive an opportunity to perform live on KATU's newest public service program, "Two at Four". Admission is \$2.00 and the proceeds will support the Cleveland athletic department.

Four vie for state senate seat

(Continued from page 1)

Wally Priestley

(Continued from page 1, column 5)

to accommodate our nickles and dimes against their millions of dollars."

In the *Willamette Week*'s legislative rating, he received an "average" rating from his colleagues for his effectiveness as a state representative. Priestley responded by attacking *Willamette Week* as a "characterization of the silk-stocking liberal, almost exclusively white paper with a liberal democratic view of politics."

"They believe the legislature and city council are serving the needs of the people. My approach is different. To pass bills, you have to accommodate all those forces of evil. I confront and bring truth to power."

He recalled an incident which he said put him in direct conflict with the former editor, Ron Buel. He called the *Willamette Week* "Neil Goldschmidt's machine."

Mark Zusman, editor and co-owner, said Buel left the paper six months prior to the legislative report card. "We have no affiliation with Neil Goldschmidt nor did any political affiliation get in the way of the integrity of our report card."

Zusman said Priestley's defense was unfair to the readers and staff of *Willamette Week*.

In condemning *Willamette Week* for being exclusively white, Priestley could be the pot calling the kettle black. He has never hired any Blacks, but said in 1981 he had, "a Mexican lady work for me."

"My policy has been to hire activist people. I will not hire people

who just need a job. This last session, I tried to get a Black citizen who was active but could not."

At a recent Portland Community College forum, Priestley said Ed Leek deserved the support of the community. "I'm not advocating anyone to support anybody except me. I think it's unfair for people to say anything about the legislative record of Leek. When I sense people are being treated unfairly, be it minority or majority, it makes me feel better if I speak for the guy being discriminated against. Ed Leek has been true to the district."

He denied the rumor that, in 1982, he filtered information to Leek which gave Leek an upper edge over his opponents. "My candidate was Rose Gangle."

Priestley said he had to bed hop by renting an apartment, "So I could run in a different district. I promised my colleagues, if they would create District 18, I would not run so a Black person could be elected. In my mind, I'm very self-congratulatory about the creation of District 18."

To his credits, Priestley made the sales tax issue a lot more vocal than many of his colleagues wanted. He favors taxation based on the individual's ability to pay and pushes public investment in people rather than tax breaks for businesses.

Stephen McElroy

(Continued from page 1, column 6)

In the question and answer forum, McElroy was not well informed on the issues.

"I wouldn't say I was fuzzy on the issues or uninformed. On issues

AMA holds annual banquet

Albina Ministerial Alliance (AMA) is having its Annual Banquet May 5, 1984, at the Cosmopolitan Airtel, 6221 N.E. 82nd Ave. The Honorable Jim Hill will be the guest speaker. Jim Hill is the Dist. 31 Representative in Salem, Oregon. After receiving his J.D. (law degree) from Indiana University in 1974, he moved to Oregon. Mr. Hill began working for the Oregon Dept. of Justice as an Asst. Attorney General soon after moving to Oregon. Currently he works for State Farm Insurance as a Personnel Specialist. Jim Hill was elected to the Oregon House of Representatives, in 1982. During his term as Dist. Representative he has worked on these interim committees: Judiciary, Legislative Council, Reforestation and Hardwoods.

Albina Ministerial Alliance is an ecumenical ministries organization involving 40 or more ministers serving congregations in North and Northeast Portland. The organization is approximately 50 years old, but has been actively in-



REP. JIM HILL

involved in community service programs since 1964 and was incorporated as non-profit in 1971. AMA began as an all Black ministers' organization. As time passed, the organization grew stronger. Realizing that there are many members but only one body, the Alliance opened its arms to clergy of all races.

where I may be uninformed, I would have someone help me on it."

He espouses the Democratic party line, but what would he do if the party's view differed from what the community wanted?

"I would take both views into consideration and whatever the majority felt about the issues, that is how I would vote."

McElroy is also the only candidate endorsing Gary Hart for president.

"I think he is the only candidate

that can beat Reagan. I don't think Walter Mondale can win because of his affiliation with Jimmy Carter. I don't think enough is known about Jesse Jackson to win. We have to beat Reagan—not come close or tie."

The public has yet to see McElroy's campaign billboards, lawn signs or literature.

"I have no strings attached. My campaign has been funded out of my pocket. When I go to Salem, I can go with no strings and represent the views of the constituency."

INTERESTING FACTS

brought to you every week by

AMERICAN STATE BANK

MEMBER FEDERAL DEPOSIT INSURANCE CORPORATION

In medieval times, church bells were rung in an attempt to stop storms.

Arabic numerals were invented in India.

An estimated 70 million Americans are overweight. Excess weight is a major cause of preventable death in the U.S., second only to cigarette smoking.

The animal with the largest brain in proportion to its body is the ant.

We do not do business with South Africa.

American State Bank

AN INDEPENDENT BANK

Head Office
2737 N. E. Union
Portland, Oregon 97212

LESS THAN \$1.49 20% FAT POUND

K

SHOP

KIENOW'S

FOR BRANDS you know VARIETIES you like SIZES you want!

The Friendliest Stores in Town Since 1908

- 6411 S.E. Millwater • 14th & S.E. Morrison
- 55th & East Burnside • 33rd & N.E. Hancock
- 122nd & N.E. Olney • 39th & S.E. Division
- N. Lombard at Orsley • 33rd & West Burnside
- Selkirk Hills Plaza • Lake Oswego 90 B & A
- 122nd at S.E. Division • King City

• Oak Grove

MEMBER OF UNITED BANKERS