

# CHRISTMAS A FAMILY HAPPENING

## —AND MORE

### FROZEN CHOCOLATE MOLD

- 1 small (10 1/4 oz.) frozen pound cake, thawed
- 1/4 cup almond liqueur
- 5 squares semi-sweet chocolate
- 1 container (8 oz.) frozen whipped topping, thawed
- 1/4 cup chopped pecans
- 2 tablespoons finely chopped drained maraschino cherries
- 2 tablespoons butter or margarine

Cut pound cake into twenty 1/4-inch slices; cut slices in half diagonally. Line 1 1/2-quart bowl with plastic wrap or strips of waxed paper. Then line bowl with cake slices to cover completely, trimming if necessary. Sprinkle cake with liqueur. Melt 2 squares of the chocolate in small saucepan over very low heat. Cool; then fold into 1 1/4 cups of the whipped topping. Spoon into cake-lined bowl. Fold nuts and cherries into remaining whipped topping; spoon into bowl over chocolate mixture. Cover completely with remaining cake slices. Cover with plastic wrap and freeze until firm, about 4 hours.

Heat remaining chocolate with butter in saucepan until chocolate is melted and mixture is smooth. Cool slightly. Invert frozen mold onto plate and remove plastic wrap. Spread chocolate mixture quickly and evenly over cake. Freeze about 10 minutes, or until chocolate is firm. Store in freezer. Cut into wedges. Makes 8 to 10 servings.

### CHOCOLATE PINWHEELS

- 2 1/4 cups unsifted all-purpose flour
- 1 teaspoon double-acting baking powder
- 1/2 teaspoon salt
- 1/2 cup butter or other shortening
- 1 cup sugar
- 1 egg
- 1 teaspoon vanilla
- 2 squares unsweetened chocolate, melted

Mix flour with baking powder and salt. Cream butter; gradually add sugar, beating until light and fluffy. Add egg and vanilla; beat well. Add flour mixture, a small amount at a time, mixing well after each addition. Divide dough in half; blend chocolate into one half. Roll chocolate and plain dough separately between sheets of waxed paper into 12 x 8-inch rectangles. Remove top sheets of paper. Invert plain dough onto chocolate dough and remove remaining paper. Roll up as for jelly roll; wrap in waxed paper. Chill until firm, at least 3 hours. (Or, freeze 1 hour.) Cut in 1/4-inch slices. Place on ungreased baking sheets. Bake at 375° about 10 minutes or until cookies just begin to

brown around edges. Makes about 4 1/2 dozen.

To hang on Christmas tree, poke a hole in each unbaked cookie near edge, using a straw or wooden pick. Insert red string licorice through holes in cooled baked cookies and tie.

### YULE LOG

- 4 squares semi-sweet chocolate
- 1/4 cup water
- 3/4 cup sifted all-purpose flour
- 1/2 teaspoon double-acting baking powder
- 1/2 teaspoon salt
- 1/4 teaspoon baking soda
- 5 eggs, at room temperature
- 3/4 cup granulated sugar

- Confectioners sugar
- 1 package (3 oz.) cream cheese, softened
- 1/2 cup granulated sugar
- 4 squares semi-sweet chocolate, broken in half
- 1/2 cup milk, scalded
- 1 container (8 oz.) frozen whipped topping, thawed

Heat 4 squares chocolate with water in saucepan over very low heat, stirring until chocolate is melted and mixture is smooth. Cool.

Sift flour with baking powder, salt and baking soda. Beat eggs in large bowl at high speed of electric mixer, adding 1/4 cup granulated sugar gradually and beating until mixture is fluffy and thick and light in color. Gradually fold in flour mixture. Blend in chocolate mixture. Pour into 15 x 10-inch jelly roll pan which has been greased on bottom and sides, lined on bottom with waxed paper and greased again. Bake at 350° for 18-20 minutes, or until cake tester inserted into center comes out clean. Turn out onto cloth, which has been sprinkled lightly with confectioners sugar. Quickly remove paper and trim off crisp edges of cake. Starting with short side, roll up cake, rolling cloth with cake, and cool on rack.

Combine cheese, 1/2 cup granulated sugar, 4 squares chocolate and the milk in blender container. Blend at high speed until chocolate is melted and mixture is smooth. Cool slightly. Measure 1/4 cup and fold into 1 cup of the whipped topping. Unroll cake, spread with filling and reroll, leaving end of cake underneath. Place on serving platter. Add remaining chocolate mixture to remaining whipped topping and spread over cake roll. Garnish with chocolate curls; sprinkle with confectioners sugar, if desired. Chill and store in refrigerator.

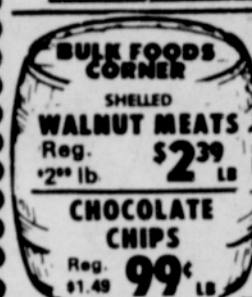


OREGON GROWN  
UNBLEACHED

**WALNUTS 69¢** lb.

- PERSIMMONS, RARE DELICACY ..... 4 FOR 99¢
- AVOCADOS, RICH IN MINERALS ..... 10 FOR 99¢
- KIWI FRUIT - NEW ZEALAND ..... EA. 49¢
- POMEGRANATES, FRUIT OF THE ANCIENTS ... EA. 29¢
- WATERMELON, FIERY RED ..... LB. 29¢
- MANGOES, DELIGHT FROM THE TROPICS ..... EA. 59¢
- GRAPEFRUIT FLORIDA RUBY RED.. 4 FOR 99¢
- APPLES, RED OR GOLDEN Delicious ..... 4 LBS. 99¢

LAST MINUTE GIFT SUGGESTION.  
GIFT PACK APPLES & PEARS



**CRIBARI WINE**  
ROSE BURGUNDY  
RHINE HABLIS



CHOCOLATE CHIPS  
Reg. \$1.49 99¢ LB.

3 LITRE \$4.39  
Reg. \$7.99

RAW ALMONDS  
Reg. \$2.29 1.99 LB.

POPCORN ..... Reg. 49¢ LB. 33¢

**ROUND STEAK** U.S.D.A. CHOICE BEEF ..... **\$1.69** LB.

S & W BRAND **BULK MINCEMEAT** 98¢ LB. IMPORTED FRENCH CHEESE **BRIE** ..... **\$2.98** LB.

PRICES GOOD THRU SATURDAY, DEC. 18, 1982

**SHERIDAN FRUIT Co.**

S.E. UNION & OAK — 235-9353

Open Christmas Eve  
and  
Christmas

Open Christmas Eve  
and  
Christmas

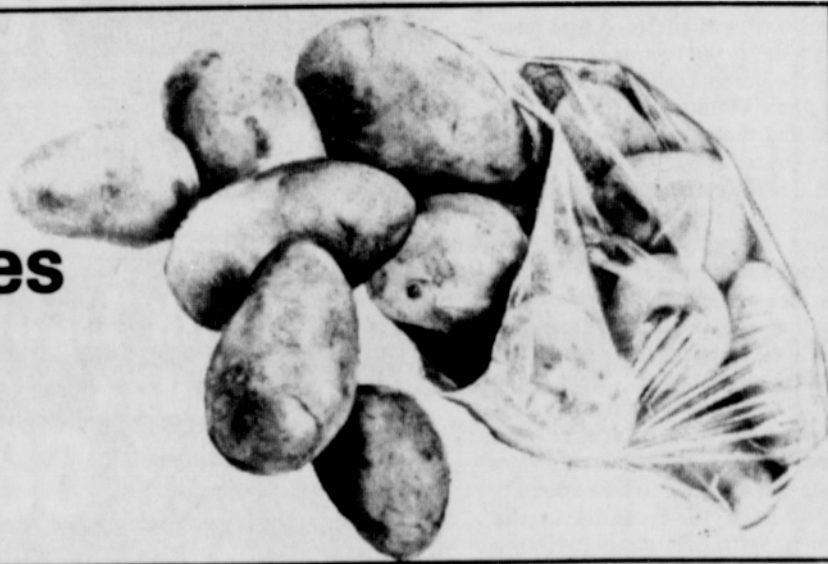
## Brandel's Killingsworth Foods

1616 N.E. Killingsworth

"For all your holiday food needs"

Mustard Greens ..... Fresh local ..... 4 for \$1.00

15 lb. bag #2  
**Potatoes**  
**79¢**



Yams ..... Number 1 Quality ..... 5 lb. for \$1.00

Lemons ..... Large ..... 10 for 99¢

Pie Crust ..... Mrs. Smith's Frozen ..... 69¢

Potato Chips ..... Blue Bell Box ..... 79¢



**Hams**  
**\$1.49 lb.**

"Also come visit our new Deli at Brandel's Alameda Foods & Deli at 2416 N.E. Fremont"

We also have boneless hams, picnic hams, geese, ducks, capons, chitterlings, and turkeys.

Member United Grocers

### Shrimp basket

6 shrimp & fries  
**\$1.99**

### Fish Sandwich

A real treat  
even better with cheese, add 15¢  
**\$1.35**

expires Dec. 31, 1982

### Chicken Sandwich

4 inch bun, lettuce, tartar sauce  
**\$1.75**

A real treat

### Check our NEW LOW PRICES

All Food Cooked To Order  
7339 N.E. Union  
285-3573

### Gold • Diamonds • Silver

Cash also paid for:  
Cameras • TVs • Stereos •  
Firearms • Anything of value  
**RED DOOR**  
6006 S.E. Foster  
Mon-Sat 9-5 775-7811



**FULL MEAL DEAL**



All full meal deals include: Small order of fries, small coca cola and a 5 oz. sundae.

- Single Burger ..... \$1.99
- Double Burger ..... \$2.60
- Fish Full Meal ..... \$2.50

