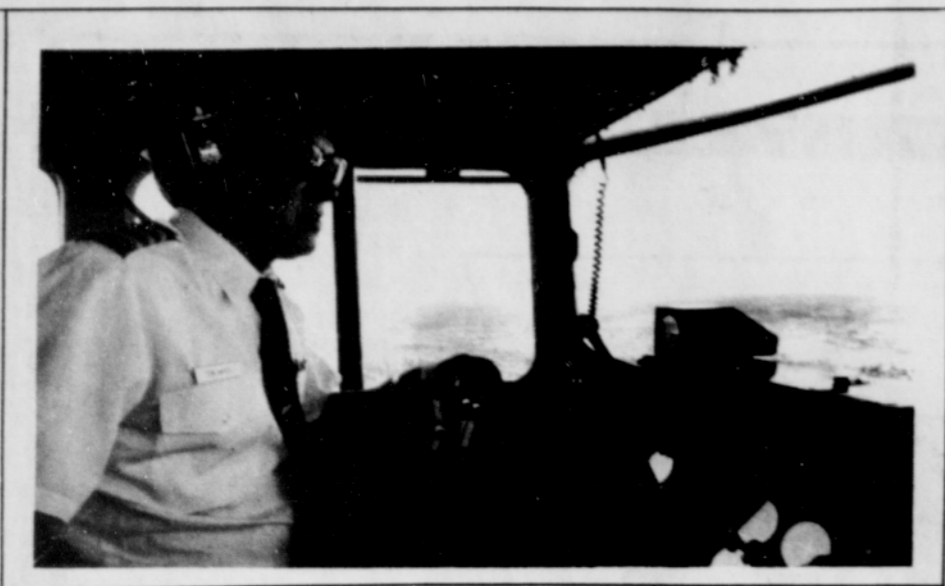


Careers for the '80s



nero & associates inc.
Management and Research Consultants

Cascade Building Suite 820
520 S.W. 6th Avenue
Portland, Oregon 97204
(503) 223-4150

DATA PROCESSING

Lamb Weston

PROGRAMMER ANALYST

In addition to our staff, we're seeking an individual interested in becoming involved with new applications using data base and CICS for on-line systems.

If you have 2 or more years COBOL programming experience, knowledge or use with DOS/VS and a degree from a qualified technical school or junior college, contact us.

We're conveniently located near freeways in the Tigard area, and offer totally company paid benefits with competitive salaries. Send resume with salary requirements or contact for company application.

Employment Administrator
Lamb Weston, Inc.
PO Box 23517
Portland, Oregon 97223
Equal Opportunity Employer M-F-H

Advertise
in the
Observer

Meet BEVERLY WATSON, who joined the NW Marine family of companies in 1970. As a graduate of Lincoln High School who has obtained 2 1/2 years of college education, Beverly began at one of our subsidiaries as a receptionist. She moved into other positions involved with typing, billing, and material status reporting. In 1976 she was asked by the then Corporate Executive Vice President, now President Bob Thoman, to accept a position in our Shop Division's purchasing department as an Expeditor. Since 1979, Beverly is a Buyer for the Division, where she purchases materials, has supervisory duties, and interfaces frequently with the vendors and employees.

Beverly is presently attending the Company's supervisory courses at Management's request. She and her husband, Lavern, have 2 children, Winteress and Lavern. Beverly enjoys family outings, plants, latch hooking and ceramics.

... ..

We are an Equal Opportunity Employer.
Our job openings are listed at the Urban League and NAACP offices.

**NORTHWEST MARINE IRON WORKS
AW REBUILDERS
ATLAS IRON WORKS
ELECTRICAL CONSTRUCTION**

Career for future

There is an increasing trend toward specialization. According to recent surveys, the fields with the most job opportunities are: Accounting, Business Administration, Computer Science, Data Processing, internal auditing, marketing, materials science, nursing and related health fields, retailing, sales, word processing and chemical, electrical, nuclear, mechanical and mining engineering.

Computers may seem to be everywhere else and the fastest growing job opportunities during the 1980s will be for technicians to keep them operating. According to the Bureau of Labor Statistics, by the end of the decade employment for data processing machine mechanics will increase between 148 per cent and 173 per cent, to as many as 172,000 jobs. After the computer mechanics, the next five leading categories and their outlook for percentage growth in employment from 1978 to 1990 are: Paralegal personnel, 132 per cent to 166 per cent; Computer Systems Analysis, 108 per cent to 123 per cent; Computer Operators, 88 per cent to 101 per cent. Office Machine and Cash Register Services, 81 per cent to 96 per cent; Computer programmers, 74 per cent to 87 per cent.

Computer experts are needed in every sector of the economy—in agriculture, construction, finance, government, manufacturing, mining, services (which includes hotel, police, and fire departments, small-scale business users, software companies and data processing), trade and transportation. Demand should expand fastest in the service area.

POLICE OFFICERS

Approximate monthly pay rate:
\$1648 starting **\$2094 after three years**
\$1856 after one year **\$2349 after five years**



To qualify applicants must:

- Be a high school graduate or have passed the GED equivalency test
- Have completed 90 quarter or 60 semester hours of liberal arts curriculum at an accredited college or university or must do so within 5 1/2 years of appointment
- Be at least 21 years of age by their date of employment
- Be a U.S. citizen by the date of their employment
- Possess a valid Oregon Driver's License
- Not have been convicted of a crime, the punishment for which could have been imprisonment in a State or Federal Prison

For further information contact:



Portland Police Bureau-Personnel Division
222 S. W. Pine
Portland, Oregon 97204
Paul Maxey (503) 248-5653

The City of Portland Civil Service Board
510 S. W. Montgomery St.,
Portland, Oregon 97201
248-4352 for applications.

