



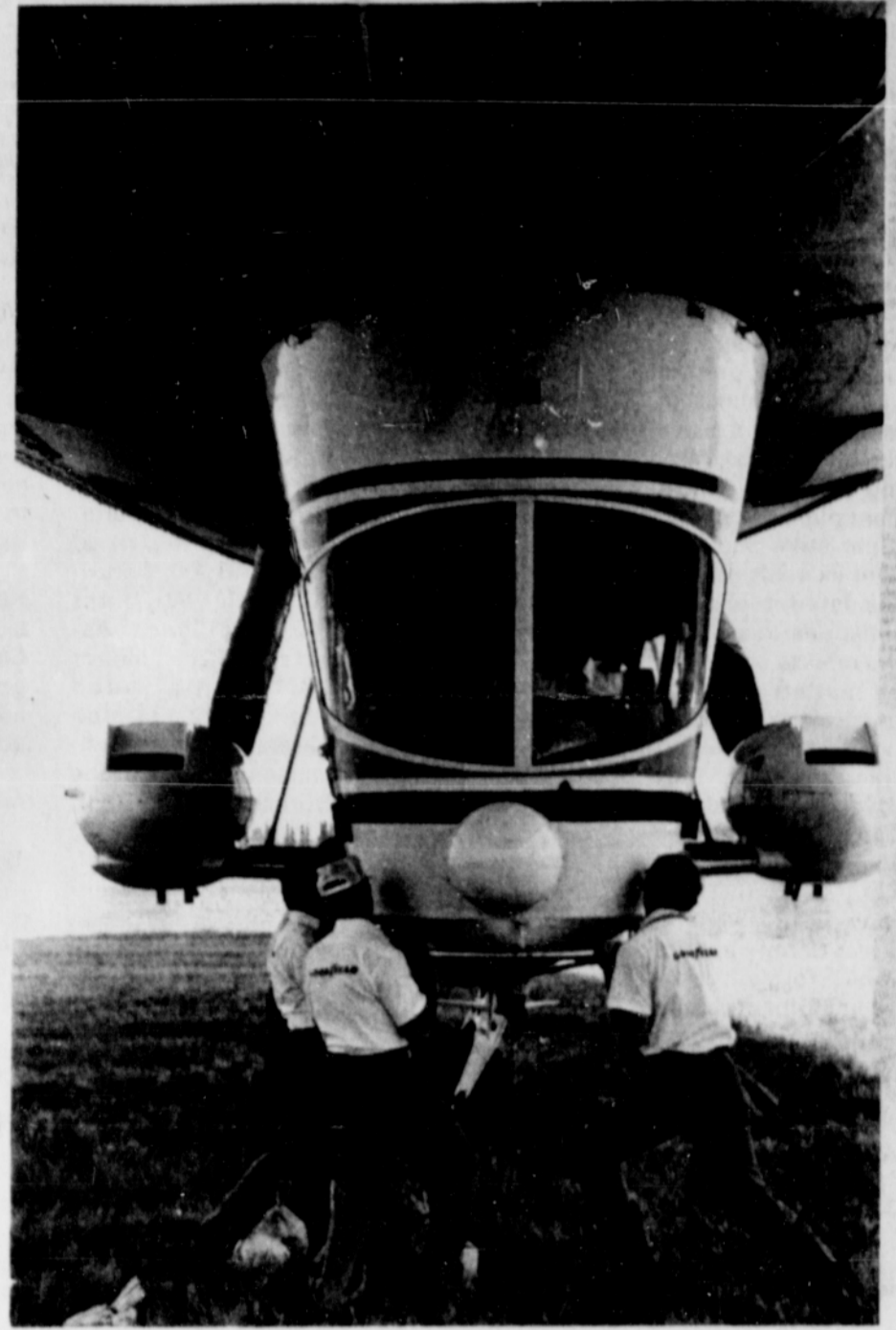
The happy students leave the Goodyear blimp following a ride over Northeast Portland.



Mike, LaChelle, Rodney (back seat), Cheree and Suzanne prepare for lift-off. Not pictured is Shawn, who sat in front with Senior Pilot Jeff Chamberlain.



Bob Urhousen of the Goodyear staff gives the students a preview of the ride and information on the ship.



Ground crews unfasten the wires that hold the blimp on the ground as Shawn observes the control panel.

If I were the Goodyear Blimp . . .

Winners of the Portland Observer-Goodyear blimp ride were Mike Blake and Rodney Hicks of Tubman Middle School; LaChelle Banks and Cheree Wilkins of Boise; and Suzanne Walls and Shawn Strickland of Applegate.

Their essays on "If I were the Goodyear blimp . . ." won them this ride.

(Photos: Dan Long)

IT TAKES MORE THAN BRAINS TO GO TO COLLEGE.

It takes money. For tuition, room and board, and books. And that's just the beginning.

To help meet these costs, the Army proudly introduces the Army College Fund. You can join it, upon qualifying, when you join the Army.

For every dollar you put in, Uncle Sam puts in five. Or more. So, after just two years in the Army, you can have up to \$15,200 for college. After three years, up to \$20,100.

Call for your free copy of the Army College Fund booklet. It could be the most important book you've ever read. Call toll free 800-421-4422. In California, 800-252-0011. Alaska and Hawaii, 800-423-2244.

ARMY. BE ALL YOU CAN BE.



LIFT-OFF!!!

RUMOR HAS IT butch coors

Hair Design for Men & Women



Still Has The Best Curl In Town At The Best Price!!
CURL Reg 960 Now \$25 HAIRCUT Reg 920 Now \$10
1405 N.E. Broadway • 284-1897

LOVE THAT CHICKEN!

POPEYES

FAMOUS FRIED CHICKEN

with that Original New Orleans Flavor



I'VE GOT GREAT LEGS!

3 Locations To Serve You:
5949 N.E. Union Ave. 3120 N.E. Union Ave.
283-9542 281-2628

2320 S.E. 82nd Ave.
774-9651



GREAT VALUE!

Even its footprint tells you it's different

ARRIVA RADIAL

\$46⁵⁰

Size P155/80 R13 Black

+ \$1.52 FET. No trade needed.

WHITENALL SIZE	PRICE	PLUS FET NO TRADE NEEDED
P185/80 R13	\$ 88.70	\$1.87
P185/75 R14	\$ 71.00	\$1.88
P195/75 R14	\$ 77.80	\$2.16
P215/75 R15	\$ 88.40	\$2.57
P225/75R-15	\$ 80.80	\$2.73

- Fuel-saving radial ply construction
- For all season year round service
- Tough steel belts for long tire life
- For cars with front or rear wheel drive

★ **FRONT END ALIGNMENT**

• Inspect all four tires • Set Caster, camber, and toe-in to proper alignment • Inspect suspension and steering systems • Most U.S. cars, some imports.

\$18

Parts and additional services extra if needed. Front wheel drive and Chevettes extra.

GOODYEAR

BB TIRES SALES CO.

7510 NE UNION at LOMBARD

OPEN: 8:00 to 5:00 Daily. Sat. 9 to 1

283-5248

