



OBSERVATIONS

FROM THE SIDELINES
by Kathryn Hall Bogle

Among the University of Portland May graduates was KPTV show host, Ulysses Tucker, Jr., who received his master's degree in communications. His dream for himself came true on that day.

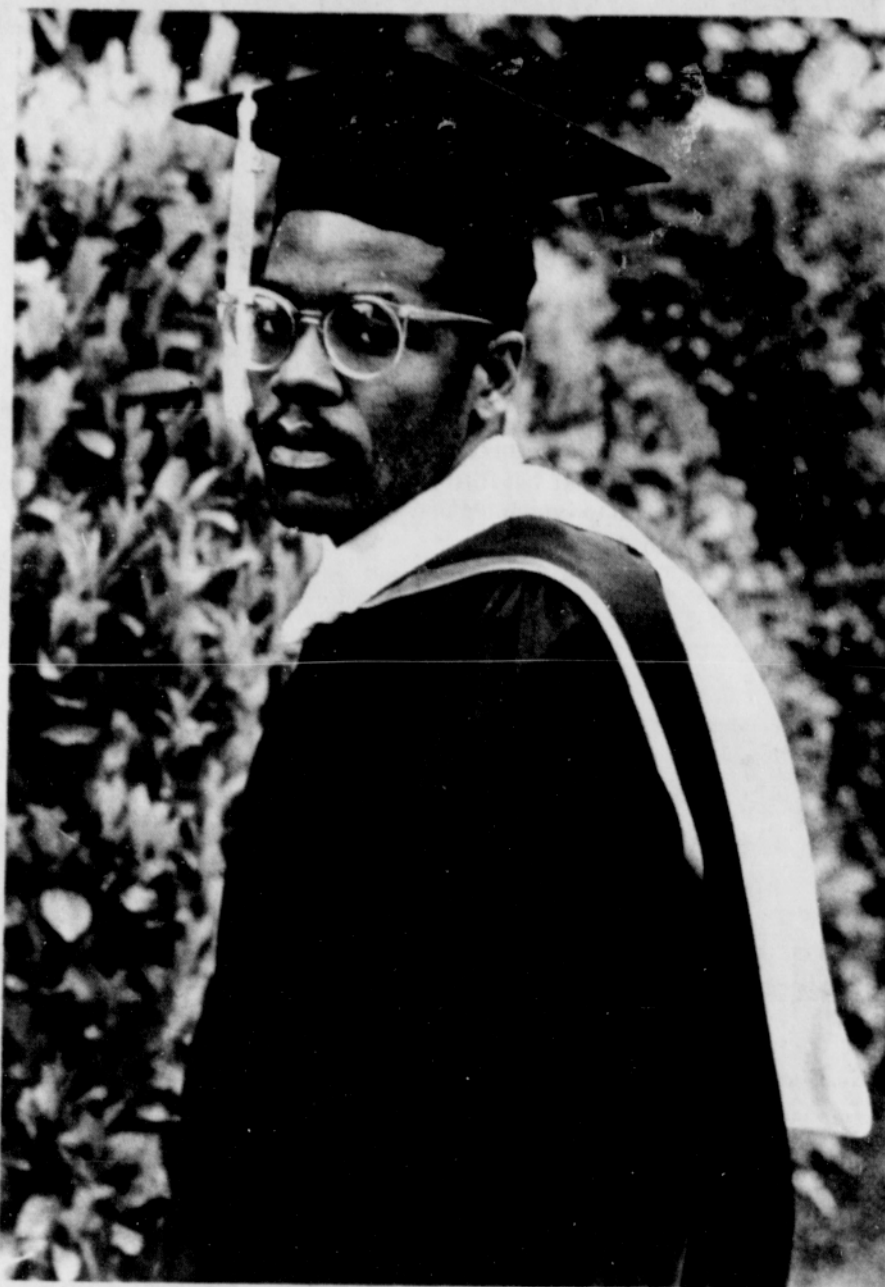
Caught in a reflective mood during a brief interview, Tucker confided that he had carried the dream in his heart for a long time. "I had the dream and I did it," he said. "If you can't dream it, and work toward it, you can't do it."

"I had a high school counselor back in Washington, D.C. where I was born, who told me I would never make it in college — that I was not college material. She was a black person but if I had listened to her I would not be here (wearing this cap and gown) today," says the 26-year-old personality.

"I went the community college route in Nebraska on a basketball scholarship and earned an associate degree in journalism from Southeast Nebraska Community College. My bachelor degree came in radio and TV communications in 1979. Along the way I acquired an advanced certificate in photography before I enrolled at the University of Portland for advanced work in communications.

"Nothing beats a failure but a try" is my message to my six brothers and sisters in DC. I have been role model for them, and I say this to all young people who dare to dream."

Tucker wants to savor this triumph before he firms up new plans. He is a member of the Black Media Coalition and of the Association of Black Communicators.



ULLYSSES TUCKER

(Photo: Jimmy Robinson)

Campf develops PCC services

by Nathaniel Scott

Programs for displaced homemakers and cooperative day care services are without a doubt beneficial to a growing number of people in the Portland area. Men and women who have recently been separated or divorced, either unemployed or underemployed and in the home and out of the work force for a substantial number of years, are displaced homemakers, according to Joan Campf, Portland Community College's Director of Career Planning and Placement.

Cooperative day care at PCC is a service that enables the parent to

pay a monthly fee of \$15 and provide a determined number of day care service work hours in the program in exchange for child care.

Displaced homemakers can come to the college and get job placement careers services, family services, support groups, information and referral, and child cooperative day care information free, she added.

The Family Service Center (full-day care for three and four year olds and short-hour care for six months to six year olds) and the cooperative day care program are the first of their kind on a community college campus in the US.

In addition, the careers department offers information about non-traditional careers "for those who have been out of school for a period of time" and family services.

Ms. Campf has been with PCC for four years. She created, developed and funded the Career Planning and Placement Center and recently put together a Student Survival Supplement that has a directory with 125 scholarship listings.

"A list of scholarships, financial aid sources and student services. Where to go, where to apply, how to qualify."

Most of the scholarships listed — broadcasting, business, minority, engineering/science, health (dental and medical assistants), journalism, law, music, Army, Navy and others — are for first and second year PCC students.

"We had to make choices . . . which scholarships to list . . . The scholarships can apply to any student in the state of Oregon."

The supplement is the aftermath of an idea gleaned from students with financial needs who were unable to apply for financial aid or didn't want to apply, she said.

"I think we live in extremely stressful times and aiding students get an education is what a community college is all about."

The year of planning and research that Campf, Jerry Taylor, Fran James and Kay Jones put into developing the supplement is insignificant to Ms. Campf.

She said, "I guess I get a notion about something that I think is important and the time constraints are not important. I am more interested in seeing the job finished."

PCC's careers department services 12,000 to 15,000 people each year. "We are looking at the development of new programs and new ways to offer existing programs."

She encourages those in need of tutoring, career planning and placement, child care, scholarships and/or financial aid information to contact the careers department: 244-6111, ext. 468 or 469.



(Photo: Shirley Twigg)

Summer registration begins

Portland Public Schools' regular summer session begins June 28th, with registration materials now available through the 15th. The summer sessions, which run from four to six weeks, will offer basic and enriched elementary and secondary programs plus a driver-education program for high school students.

The six-week secondary session ending August 6th will be held at Lincoln High School, with career-education courses offered at Benson. The Elementary sessions will be offered at Markham Middle and

Hollywood Primary for Kindergarten through Grade 3 and at Markham and Grant for Grades 4-8.

Tuitions are \$90 for secondary and \$70 for elementary students. Call 249-2000 for information.

A AARDVARK CARPET CLEANING
Mobile Truck Mount
Hot Water Soil Extraction
Free Estimates - Lowest Prices - Expert Service
Call: 777-3525

TRAVEL ROBERTS'
3415 n.e. Broadway
Portland, Oregon 97232

San Francisco	\$69.00
Los Angeles	102.00
ONE WAY	
Hawaii	379.00
Florida	258.00
East Coast	298.00
Minneapolis/St. Paul	218.00
Tulsa	200.00
Bahamas	354.00
Houston	299.00
ROUND TRIP	

Please call—we have more low air fares.
287-1745

HELP US PLAN NEW DIRECTIONS FOR ENERGY CONSERVATION

That's what all-day public workshops in six Northwest locations are all about. With help from the people who might work with Bonneville in offering programs to electricity users, we hope to determine the best ways to develop conservation in 1983 and beyond.

We're asking individuals, various interest groups, governments, electric utilities and businesses to help us decide what programs should be offered, how they should be offered and what incentives should be provided. Everyone is welcome to participate.

Both oral and written comments will be considered in selection and design of new conservation programs.

To receive more detailed information on program options and how you can participate in their selection and development, call toll-free: In Oregon, 1-800-452-8429; in other Northwest states, 1-800-547-6048.

WORKSHOP SCHEDULE

Burley, Idaho — June 7
9:30 a.m. - 5:15 p.m.
Burley Inn
800 North Overland

Missoula, Montana — June 8
8:30 a.m. - 4:15 p.m.
Holiday Inn
1608 West Broadway

Spokane, Washington — June 9
8:30 a.m. - 4:15 p.m.
Sheraton Inn
N. 322 Spokane Falls Court

Walla Walla, Washington — June 10
8:30 a.m. - 4:15 p.m.
BPA Building
West 101 Poplar

Seattle, Washington — June 11
8:30 a.m. - 4:15 p.m.
Seattle Center, Mercer Forum
Rooms 3 & 4
Third North and Mercer Streets

Portland, Oregon — June 14
8:30 a.m. - 4:15 p.m.
Lloyd Center Auditorium
Multnomah Level
West of Mannings Restaurant
Lloyd Center

Remember. What you say counts.

Bonneville Power Administration

THE 1982 WEIGHT WATCHERS PROGRAM AT 1969 PRICES

JOIN FOR \$5

EXTENDED THRU JUNE 12 ONLY

YOU CAN LEARN HOW TO LOSE WEIGHT WITH OUR LATEST FOOD PLAN, BEHAVIOR MODIFICATION AND OPTIONAL EXERCISE PLANS.

1969 PRICES FOR A LIMITED TIME ONLY!
FIRST MEETING AND REGISTRATION FEE JUST \$5.00

Call Collect (503) 297-1021

WEIGHT WATCHERS

The Most Successful Weight Loss Program In The World
Offer Good Only in Area 083

Weight Watchers International, Inc. 1982 owner of the Weight Watchers Trademark



Super Shopping Centers Help Lower Your Cost of Living . . .

Your nearby Fred Meyer Super Shopping Center is filled with "People-Pleasing" services to make your shopping more pleasant. Wide, spacious aisles, friendly helpful clerks and undercover parcel loading are just some of the "People-Pleasing" services to you. Plus everyday low prices on thousands of items you use and need everyday help lower your cost of living.

Because we're open 9 a.m. to 10 p.m. daily, including Sunday, you can shop when you WANT to, not when you HAVE to. Come in anytime and "funshop" in a pleasant, relaxed atmosphere.

- **Walnut Park** N.E. Killingsworth at Union
- **Interstate** N. Lombard at Interstate
- **Peninsula** 6850 N. Lombard

Plenty of Free and Easy Parking

Open 9 am to 10 pm daily, including Sunday.