



FIRST STEP in putting up a tile ceiling is to nail 4-foot metal tracks to the old ceiling or exposed joists on 12-inch centers. The easy-handling tracks replace unwieldy, warp-prone wood furring strips often used to put up ceiling tile.



SECOND STEP is to position the ceiling tile flush against the track. Any standard tile or plank (an oblong tile) can be installed using this new method.



FINISHED CEILING required no stapling, no adhesive and less than half the nailing of a tile ceiling installed with conventional wood furring strips.

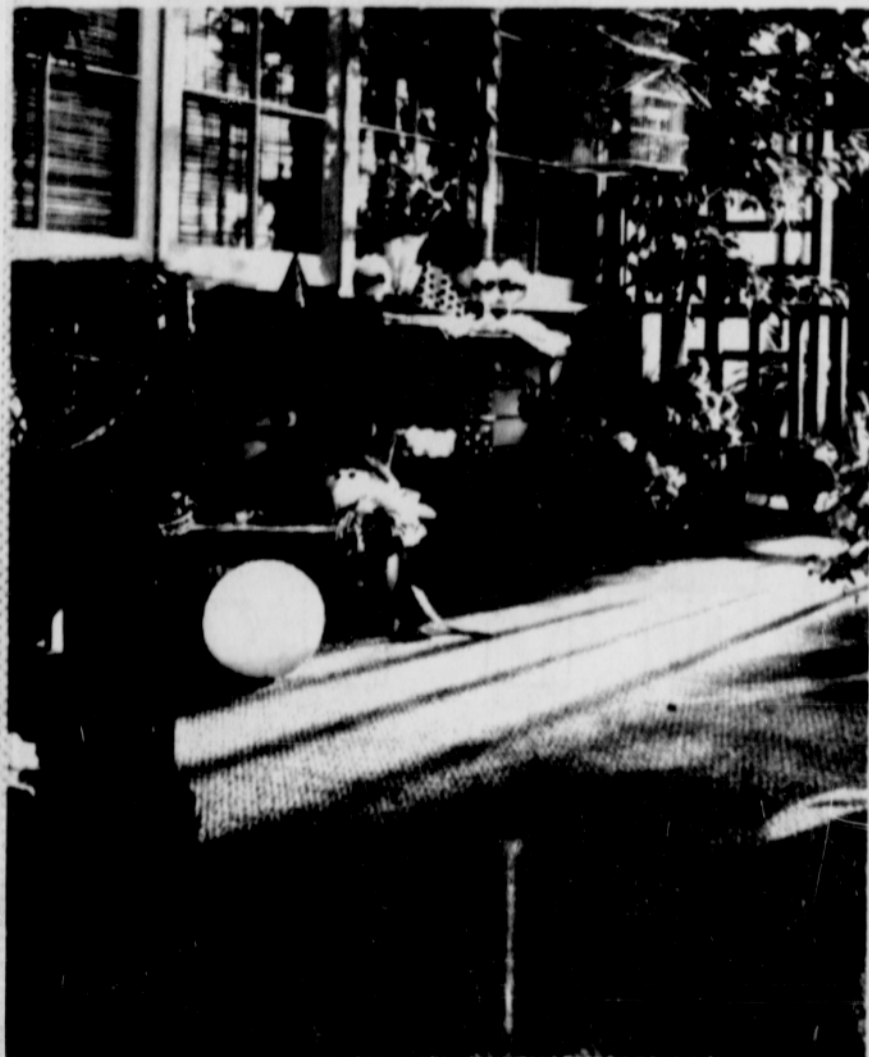
Express yourself



The use of a mirror between two wall units expands and deepens this dining space. Shelving over and across the pieces creates display and storage, and brings eye interest to the upper part of the room.



It's a "now you see it, now you don't" dining table. The custom-built "disappearing" table divides and swings under the window where it becomes part of the shelf framework.



The finishing touch on this patio is the new muted pattern in "grass" carpeting. It is easy to care for... Impervious to rain damage and the sun's ultraviolet rays.



In the tiniest area available, it is possible to create storage, style, and provide adequate dining space in a model-home kitchen.



**Special
Inside
Paint
\$4.95**

**Sealing
3 for \$1.00**



WEIMER'S

Hardware Specialists

3946 N. E. UNION
PORTLAND, OREGON 97212
PHONE 281-1217