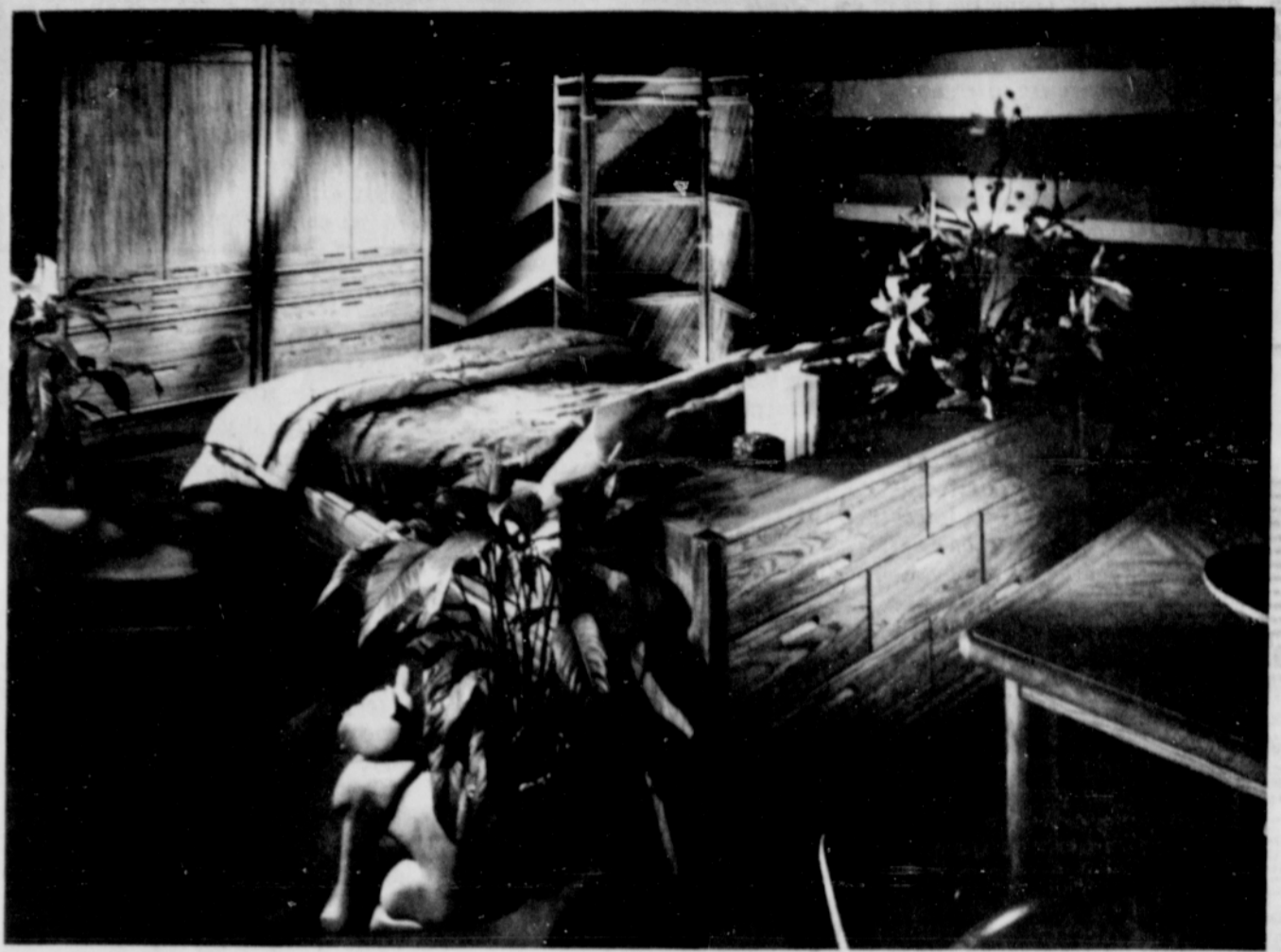


# Elegance in the bedroom



A tiny guest room appears gargantuan through the use of "mirror magic." Floor-to-ceiling mirrored closet doors visually extend the room be-

yond its real dimensions. Wall-to-wall carpet aids the illusion by pushing floors out to the walls, helping to create the appearance of a much larger room.



Out of the new freedom characterized by the use of many designs from different periods, a fresh new country look has emerged. It is called "country" because of its homey color, texture, and material rather than a particular lifestyle.

This collection of furniture has a casual, contemporary originality that is a fresh approach in design. It's a substantial look that makes a more natural statement than brass, chrome, or glim-

mery plastics. A warm, expansive collection, it is scaled and styled for today's living and tastes.

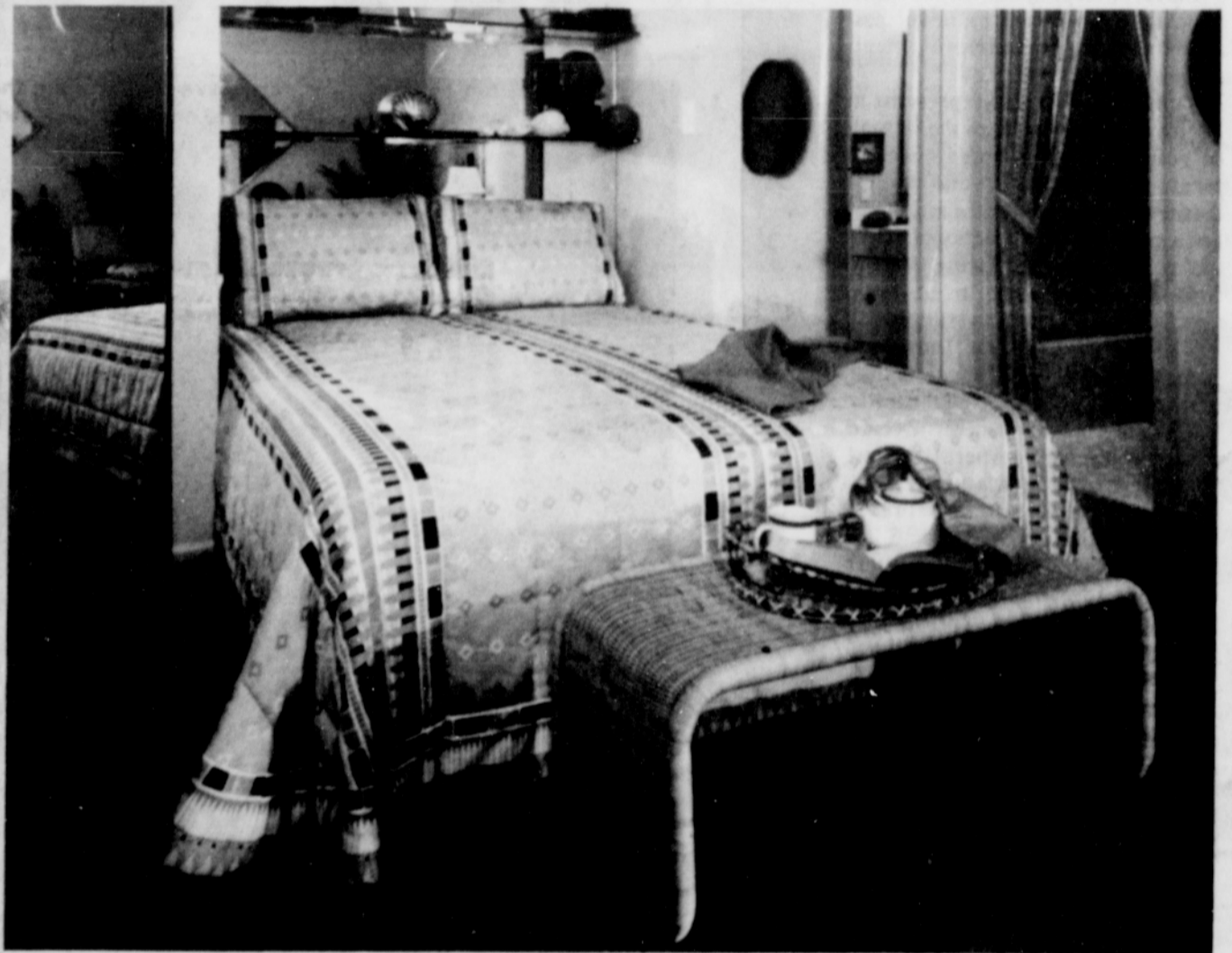
Some pieces feature horizontal recesses along the doors that create a louvered effect and there is a noticeable absence of metal hardware to help retain the simplicity of design.

Featuring ash solids and veneers, the light toffee finish brings out the very best of the wood's grain-



One room is home for many. But one room doesn't have to be limited to four walls, a floor, ceiling, and a hodge-podge of furniture.

Here is an elevated approach. Interior design is lifted to architectural heights with the use of carpeted platforms.



A mirrored recessed wall with glass shelves and mirrored closet doors create a huge looking master bedroom. Although of less than average size,

the room takes on larger proportions, helped along by plushy wall-to-wall carpets.



This bedroom retreat illustrates the sophistication of mixing a Camille canopy bed, armoire and night tables with contemporary brass-and-glass and oriental-inspired wallcovering and fabric.



An excellent example of how to get a lot of decorator dollar-value out of a few yards of patterned fabric is illustrated.