

METROPOLITAN

McCoy files for Commission seat



GLADYS MCCOY

County Commissioner Gladys McCoy has announced her intention to seek another term to represent North and Northeast Portland.

Ms. McCoy said her primary issue during the next four years will be city-county consolidation. "While I believe the consolidation of governments may be more difficult to achieve, I am equally convinced that, when the facts are known about the amount of money required to maintain duplication of services in the unincorporated jurisdiction, there will be a demand for consolidation. Additionally, almost all of the citizens in my district live within the city limits of Portland. Some of the tax dollars that the county collects from them are used to pay for County services which are used exclusively by unincorporated areas."

The coming election is the first time county commissioners have run in districts. District Two is bounded on the North by the Columbia River, on the West by the Willamette,

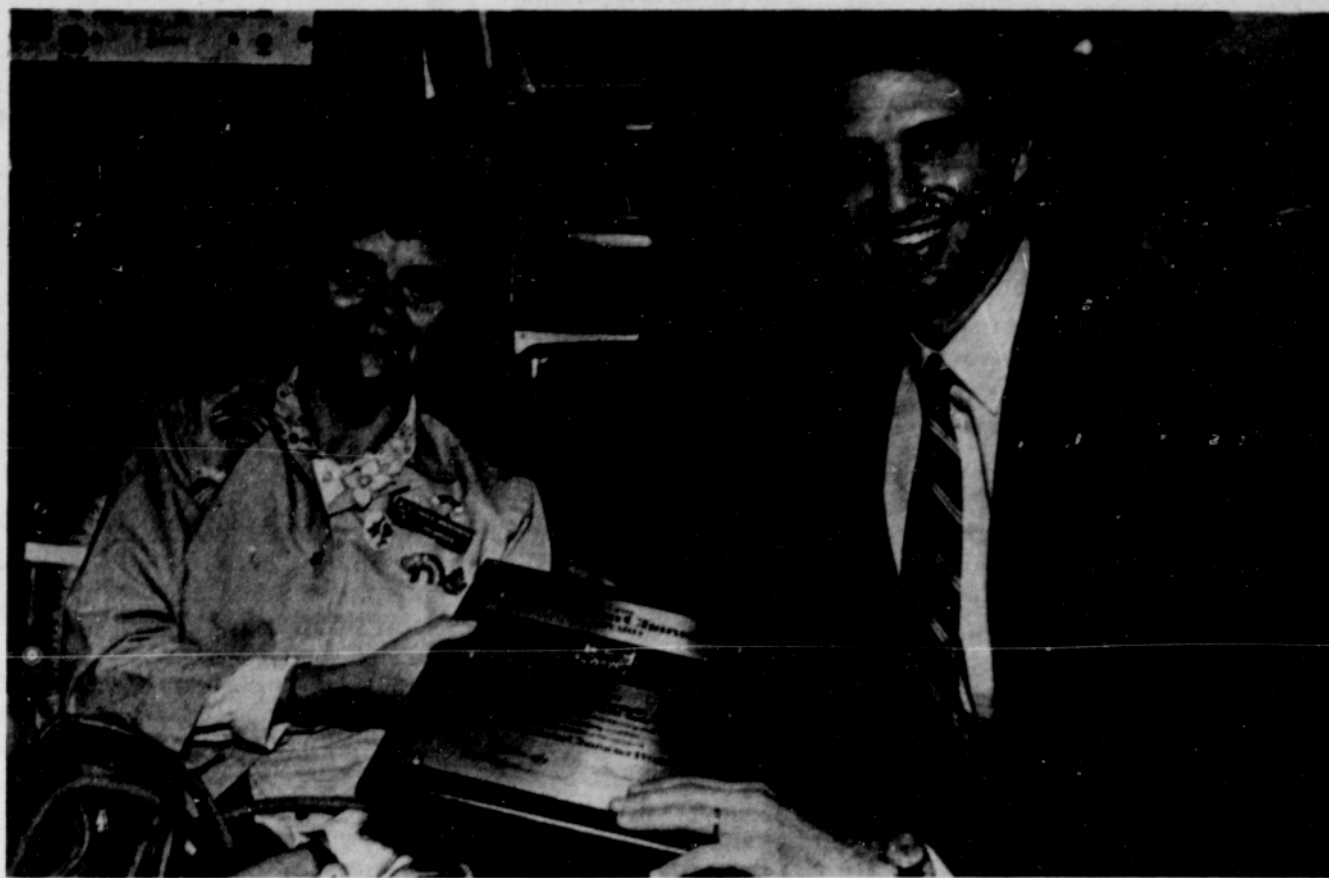
on the South by the Banfield freeway, and on the east by 42nd Avenue. The district's population is approximately 115,000.

Ms. McCoy was elected to the Board of County Commissioners in 1978 and is currently Presiding Officer. Prior to her election she was State Ombudsman from 1975 to 1978, appointed by Governor Bob Straub.

She was a member of the Portland School Board from 1970 to 1978.

A graduate of the Portland State University School of Social Work, many of Ms. McCoy's volunteer activities are in the fields of human services. She has recently served as co-chairman of the NAACP ACT-SO competition and was co-chairman of the Oregon Women's Conference. She was Oregon Mother of the Year in 1980.

She and her husband, Senator Bill McCoy, live in North Portland where they raised their family of seven children.



An Oregon woman has been chosen to receive the first award in a nationwide program recognizing the strength and courage of the American Character. Grace Wachsmuth, a partly paralyzed Portland resident has received the American Char-

acter Award of International Telephone and Telegraph Corp. from U.S. Rep. Ron Wyden, D-Ore. Wachsmuth is active in many volunteer jobs including teaching newly handicapped people how to deal with physical problems.

Make small gains

Minorities still at bottom

Minorities and women have made some gains in state employment during fiscal 1980-81 in spite of an overall reduction of the work force, but disproportionate numbers are still in lower-paying jobs.

The State employs 5.8 per cent or 1,714 minorities in full-time jobs, as compared to 6.7 per cent of the state's population and 4 per cent of the labor force. Labor force is defined as those who are employed or who are unemployed and actively seeking work. Blacks make up 1.5 per cent of the labor force; Hispanics are 1.5 per cent; American Indians are 0.3 per cent.

Of the current state employees, 1.7 per cent (498) are Black; 1.5 per cent (442) are Hispanic; 1.7 per cent (512) are Asian; and 0.8 per cent (262) are American Indian.

Minorities continue to be concentrated in lower pay ranges, but there is better representation of minorities in the upper pay ranges than a year ago. Blacks and Hispanics are concentrated in the lower pay ranges and are underutilized in all other salary categories. For example, there are only three Blacks and two Hispanics in the top salary category.

Minorities are employed most frequently in professional, paraprofessional, clerical and service/maintenance jobs. They are underutilized in technician and skilled craft job categories. Blacks are also underutilized in protective services.

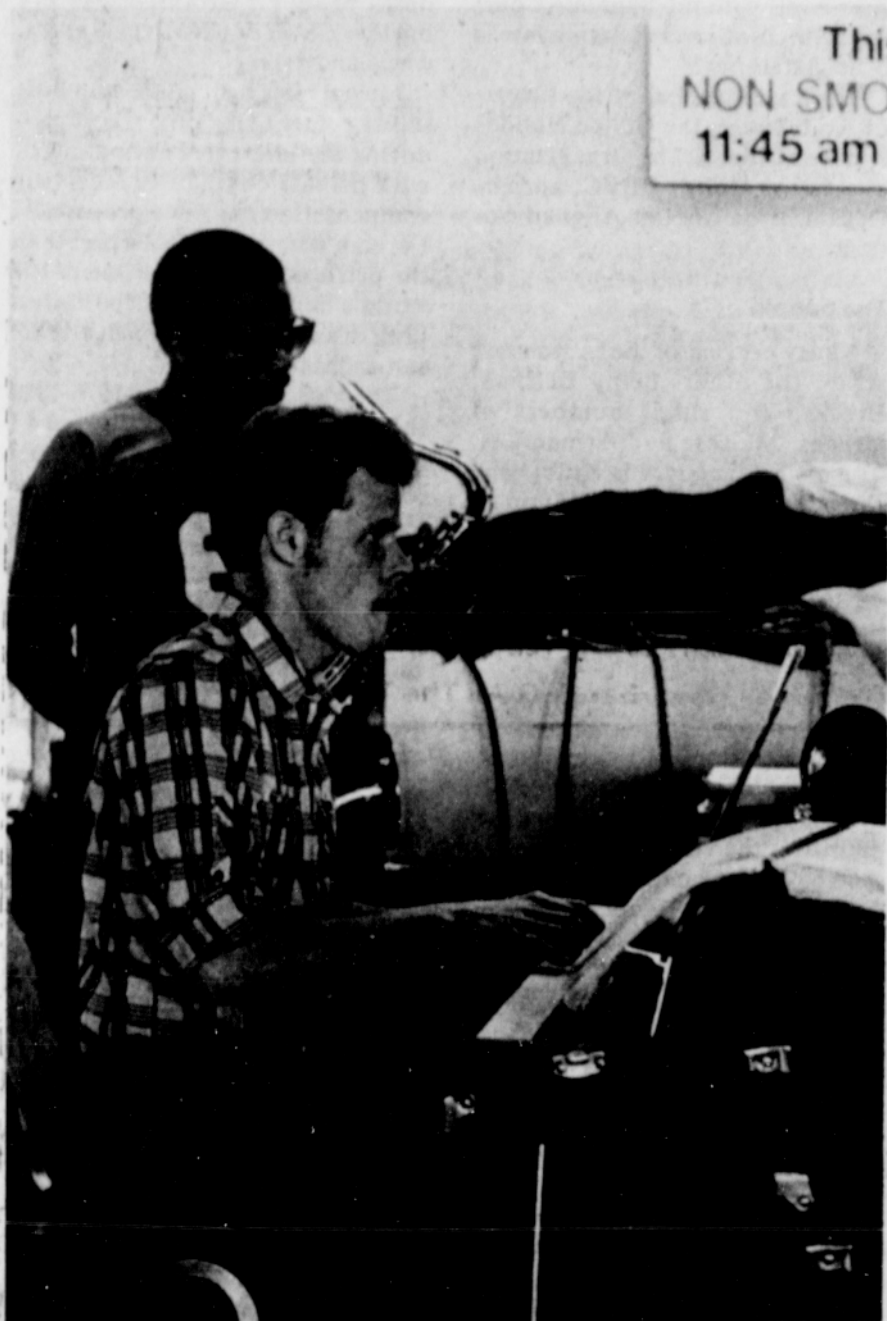
Analyses of three departments were reported by the State Affirmative Action Office. In the Department of Education minority groups were underutilized in most salary ranges. Females are concentrated in

lower salary ranges and males are concentrated in higher salary ranges. The personnel manager explained that the department is experiencing a turnover rate and there is no budget for affirmative action workshops and training.

The Employment Division has minorities and women concentrated in lower categories. The nine employees at the top categories are white, eight of them men. In the 25-30 range, only three out of 78 employees are minority: one Hispanic and two Asians. The deputy director indicated that it is difficult to maintain affirmative action during staff reductions, but minority hiring several years ago is responsible for the current minority employees.

In the Department of Revenue 5.8 per cent of the workforce is minority—but only six blacks among the 674 employees. White females dominate the full-time workforce, but are concentrated in the lower salary ranges. The deputy administrator and personnel director indicated that affirmative action has suffered during the past year because of the lack of a full-time affirmative action officer. A new seven-member volunteer equal employment advisory committee has been appointed to advise and assist in affirmative action.

Women make up 52 per cent of the state's population, but only 41.1 per cent of the labor force. Women continue to be heavily employed in lower pay ranges, 93.1 per cent of the employees in the lowest six categories being women. The rate of female employment is 50.3 per cent.



Clark Tuthill, piano, and Vernon Johnson, saxophone, are shown in performance with the Cascade Rhythm Section, a professional quality jazz combo comprised of the Portland Community College vocational music students. The Rhythm Section performs regularly at PCC's Cascade Campus, 706 N. Killingsworth.

- ALL NEW FUEL EFFICIENT CARS
- LOW DAILY RATES - FROM \$19⁹⁵
- WEEKEND RATES - \$15⁰⁰
- MAJOR CREDIT CARDS OR CASH

Rentals
(Call for Cash Qualifications)
223-4531
600 SW Pine
Between 6th & Broadway

INTERESTING FACTS

brought to you every week by

AMERICAN STATE BANK

Moths do NOT eat clothes; it's the caterpillar from moth eggs that may eat clothes—but moths themselves do not.

The man who was the Pope for the shortest time was Stephen II; he was elected Pope on March 24, 752, and died 2 years later.

The planet Jupiter is so big that 1,200 planets the size of Earth could fit in it.

The material called "denim" gets its name from the French town of De Nimes, where the fabric was first made.

American State Bank
AN INDEPENDENT BANK
Head Office
2737 N. E. Union
Portland, Oregon 97212

Notice of Public Hearing

Pursuant to Title VII of PL95-561, the Elementary and Secondary Education Act, School District No. 1, Multnomah County, Oregon, announces the public meeting of the Project Committee of the Bilingual Education: Desegregation Support Program to be held 7:00 pm, **January 7, 1982**, in the **Board Room** of the School District at **501 N. Dixon Street**. The purpose of the meeting is to review a grant application to the U.S. Department of Education for funds to implement instructional programs of bilingual-bicultural education to meet the special educational needs of minority group children who, because of language barriers and cultural differences, do not have equal educational opportunity.

HUNG FAR LOW

112 N.W. 4th Ave. • 331 N.W. Couch
PORTLAND, OREGON 97209

Chinese Dishes a Specialty

Phone 223-8686

NORMAN WONG
Manager

Open Daily: 5 pm-3 am Saturdays: 5 pm-4 am Sundays: 5 pm-2 am

“The honey was tempting, but the people were really sweet.”

When people heard about the 1982 Weight Watchers Food Plans, our classes attracted lots of honey lovers, popcorn poppers, and peanut butter nuts! Then people discovered something even more irresistible about Weight Watchers. Other people. They found that Weight Watchers members really cared. And it was so much easier to lose weight when they weren't doing it alone.

Together, at weekly classes,

WEIGHT WATCHERS

The most successful weight loss program in the world.
Join Any Class Anytime

we can teach you how to enjoy lots of your favorite foods (within limits) and still lose weight. We can help you turn your bad eating habits into good ones. Join us today. The fabulous 1982 Food Plans are waiting—along with a lot of friendly people

It's easier to lose weight when you're not doing it alone.

<p>North Portland Carpenters' Hall 2225 N Lombard St. (at Brandon) Mon. 7:00 pm Thurs. 9:30 am</p> <p>Emanuel Hospital 2801 N. Gantenbein Emanuel East, Room 2001 (Nursing Home) Thurs. 7:00 pm</p>	<p>Fellowship Baptist Church 4737 N Lombard St. Tues. 7:30 pm</p> <p>Northeast Portland 5049 N.E. Sandy Blvd. Mon. 7:00 pm Tues. 9:30 am & 7 pm Wed. 7:00 pm Thurs. 7:00 pm Fri. 9:30 am</p> <p>(Marantha Church) 122 N.E. Skidmore Sat. 9:30 am</p>
--	---

For information call collect Portland (503) 297-1021, weekdays 8:30-5:00

© Weight Watchers, Inc. 1981 - owner of The Weight Watchers, Inc. trademark