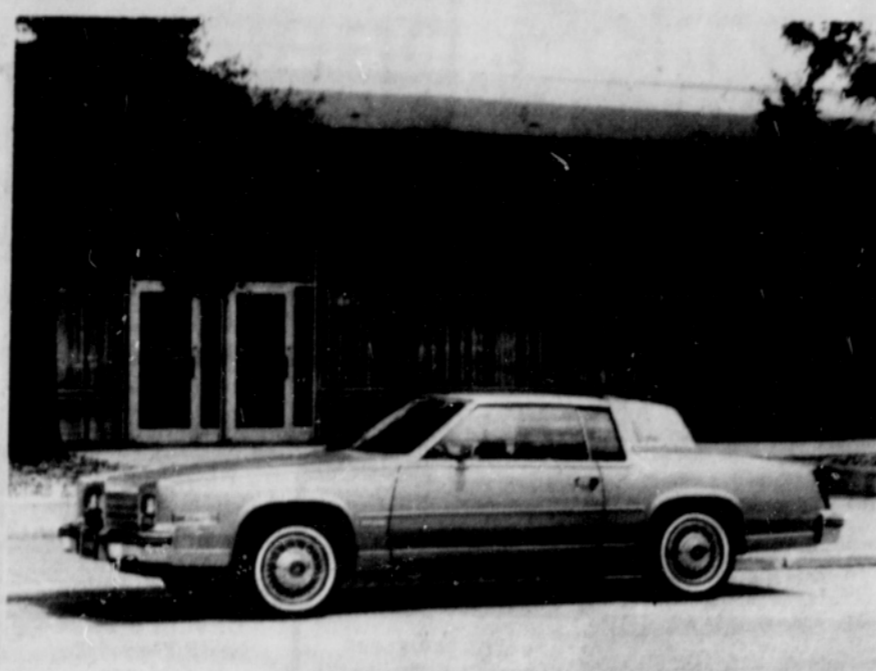


Community Energy Project, 7 pm Sept. 29, Buckman School, 320 SE 16th. Weatherization seminar for homeowners and renters. North Portland Crime Prevention Program. 7:30 pm, Sept. 29, St. Johns Community Center, 8427 N Central.



Blazers and Suburbans coming equipped with a new 6.2-liter, 130-horsepower V8 power-plant.



Wheelbase, 101.2 inches; overall length, 173.0 inches; body width, 65 inches.

### New Diesel Engine in 1982 Trucks

A new 6.2 liter V8 diesel engine for Chevrolet light-duty Pickups, Suburbans, Blazers and forward-control chassis will be offered in 1982 models.

"The new engine—developed by Chevrolet specifically for GM truck use—is designed to deliver the pulling power typically associated with comparable-size gasoline engines and the fuel economy and service life inherent in the diesel concept," said Robert D. Lund, Chevrolet general manager and a General Motors vice president.

"This is a heavy-duty diesel engine," Lund added. "It will provide our customers with the power and load-hauling capability of Chevrolet's gasoline-powered trucks with the diesel's traditional fuel economy advantage. The engine is ideal for city delivery, stop-and-go work with considerable idle time, extended highway driving, and trailering of up to 13,500 pounds."

EPA estimates—in different applications—rate the engine from 18 miles per gallon city to 31 highway.

The diesel is built at Chevrolet's new Moraine, Ohio engine plant, where microwave technology is incorporated for the first time in the ignition timing procedure of every diesel engine produced.

The procedure assures unmatched precision and consistency of the combustion process and helps the

engine meet stringent Federal as well as California emissions regulations.

The engine features a Stanadyne mechanical fuel injection system with Bosch pintle-type injector nozzles and a Ricardo-type precombustion chamber.

Seventeen bolts (five per bore) secure the cylinder heads.

A fast-action glow plug and a block heater are standard equipment.

Oil and filter changes are required each 5,000 miles for engines in vehicles of less than 8500 gross vehicle weight (GVW), or each 3,000 miles for heavier-duty applications. Other essential maintenance is significantly reduced since there are no spark plugs, ignition wires, distributor points, condenser, coil or carburetor adjustments.

The bright red engine with its distinctive barrel-shaped air intake is available in:

- All two and four-wheel drive one-half, three-quarter and one-ton pickups.

- All Suburbans
- All one-ton chassis cabs
- Four-wheel drive Blazers.

Later in the 1982 model year, the engine will be available in step vans, and both commercial and motor home chassis.

The engine is one of four different diesels available in 1982 model Chevrolet trucks.

### From Cimarron to Limousine

From the compact-sized Cimarron to the full-sized Fleetwood seven- and eight-passenger Fleetwood Limousines, Cadillac offers a range of cars designed to suit the varied tastes and requirements of the fine car buyer.

Cimarron is one of the smallest Cadillacs built since the Model D was introduced in 1905. It is the first Cadillac with a four cylinder engine since 1914 and the first to feature a standard manual transmission since 1953. Prominent dimensions for this four-door, front-wheel drive sedan are: wheelbase, 101.2 inches; overall length, 173.0 inches; and body width, 65 inches.

The 1982 Coupe and Sedan de Ville and Fleetwood Brougham Coupe and Sedan offer traditional Cadillac luxury, comfort and family-sized roominess. Prominent dimensions are: wheelbase, 121.4 inches; overall length, 221.0 inches; and body width, 75.4 inches for

Coupe/75.3 inches for Sedans.

The two-door Eldorado Coupe and four-door Seville Sedan provide full six-passenger seating with ride and handling features such as front-wheel drive, four-wheel independent suspension, and four-wheel power disc brakes. Prominent dimensions are: wheelbase, 114.0 inches; overall length, 204.5 inches for Eldorado/204.8 inches for Seville; and width, 70.6 inches for Eldorado/70.9 inches for Seville.

Cadillac eight-passenger Fleetwood Limousines and seven-passenger Fleetwood Formal Limousines are designed to provide professional car buyers with outstanding value, convenience and elegant styling. In 1982, Cadillac continues to be the only domestic manufacturer building a Limousine on its regular car assembly line. Prominent dimensions are: wheelbase, 144.5 inches; overall length, 244.0 inches; and width, 75.3 inches.



**BILL COPPS**  
Cadillac • Pontiac • GMC Truck

9th C • Vancouver, Wash. 693-1481 • 285-0541  
Before you buy a car, check our prices


**CRAIG**

1981 Road-Rated  
am/fm cassette


**159<sup>95</sup>**  
REG. 189.95

**Chuck's CAR STEREO**

630 N. E. Union Ave. Open daily 10-6p m  
Phone 231-8108 Saturday 10-5p m



## WE'RE HERE TO HELP YOU!



**ALAN MOLDEN**  
Sales Representative



**WENDELL BROWN**  
Sales Representative

Expert consultation on your transportation needs on both new and used cars.

**RON TONKIN**

**CHEVROLET-HONDA CO**

122 N.E. 122nd Ave.  
255-4100  
Saturday Parts & Service "Out 122nd Way"

"THE ONLY DEALER"



See Al McGilberry

# BILL COPPS INC.

PONTIAC • CADILLAC • GMC TRUCKS

## CLEARANCE SALE

Must make room for '82'S Over 150 to choose

Before you buy a car check our prices

**FINE USED CARS**

'73 Plymouth Satellite 4 door, automatic, power steering, air-conditioning, low miles. Stock #51550	<b>\$1188</b>
'78 Fiat X19 Convertible 4 cylinder economy, Sporty 4 speed transmission, Champagne gold. Stock No. 51680	<b>\$4988</b>
'74 VW Dasher 4 door, 4 cylinder, 4 speed, great economy. Stock #48900	<b>\$2188</b>
'77 Mazda GLC Coupe Pretty metallic blue, sports striping, automatic, 1 owner. Stock #50800	<b>\$2988</b>
'77 Ford Pinto Wagon 4 cylinder, automatic, air-conditioning, beat the summer heat. Stock #48792	<b>\$3288</b>

**TRUCKS**

'79 Mercury Capri 4 cylinder, economy standard transmission, powder blue. Stock #51070	<b>\$3988</b>
'79 Ford Fairmont 4 door, 4 cylinder, automatic, power steering, air-conditioning, 1 owner. Stock #50570	<b>\$3988</b>
'77 Ford Mustang Auto P.S. Pop Top Sunroof Stock #51850	<b>\$3588</b>
'77 Datsun B210 Hatchback 4 cyl 4 speed, low miles. Stock #51890	<b>\$2988</b>
'79 Ford Fiesta 4 cylinder, 4 speed, local car, extra low miles. Stock #50470	<b>\$3788</b>

'78 Dodge 1/2 T. Pickup Automatic, power steering, special to-tone paint, low miles. Stock #90680	<b>\$3988</b>
'77 Dodge 1/2 T. 4x4 Special War Lord package, special striping, gold spoke wheels. Stock #47410	<b>\$4688</b>
'79 GMC 1/2 T. PU Diesel V8, automatic, power steering, 1 owner, low miles. Stock #90770	<b>\$6588</b>
'79 GMC 1/2-ton v-8 Auto P.S. Air Cond. Heavy Duty equipment. Stock #91030	<b>\$6988</b>

# \$67<sup>49</sup>

**OVER INVOICE**

Dealer to retain the factory hold back. Locally added options extra. Actual factory invoice available, on request. Not all cars sell for retail price.

**\* All 1981 Model:**  
Cadillac, Grand Prix, Firebirds, Phoenix, Lemans, Bonneville, and GMC Trucks. Hurry while they last.

## Open Sunday 11-5

Large enough to serve you

Small enough to know you

# BILL COPPS

9th & C • Vancouver, Wash. • Pontiac • GMC Truck • 693-1481 • 285-0541