

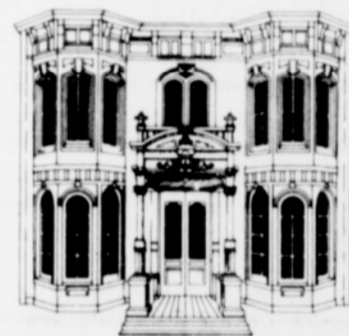


Three hundred children and their parents visited Big Sky Youth Camp on a trip sponsored by the Bible Church. Activities included horseback riding, canoeing, fishing, eating and all kinds of fun.

(Photos: Richard J. Brown)



The Morris Marks House
1501 SW Harrison Street
Portland 97201
Telephone: 227-2688



DES CONNALL
Professional Corporation
LEGAL CLINIC

CONCENTRATING IN THE FIELDS OF:

- | | |
|---|----------------------|
| CRIMINAL LAW | INDUSTRIAL ACCIDENTS |
| DRIVING UNDER THE INFLUENCE
OF INTOXICANTS | DOMESTIC RELATIONS |
| WORKERS' COMPENSATION | BANKRUPTCY |
| PERSONAL INJURY | WILLS - PROBATE |
| AUTOMOBILE ACCIDENTS | CONSUMER PROTECTION |

If you have a problem that is not covered in this list, please call and ask whether we can help. Chances are, we can. If not, we can recommend someone else for you to call. One way or the other, we want to see you get the kind of professional legal counsel you're entitled to.

The best time to call us, or any attorney, is before you are embroiled in a legal problem. This is called preventative law and it makes a lot of sense.

Regardless, when you call us we will arrange for an initial consultation at your convenience. Cost: \$20. We probably can't solve anything in this meeting, but it is a chance for you to explain your particular problem and for us to give you some idea of what it'll take to reach a solution. If you want us to proceed, we'll give you an estimate of the fees you should plan on. In writing.

