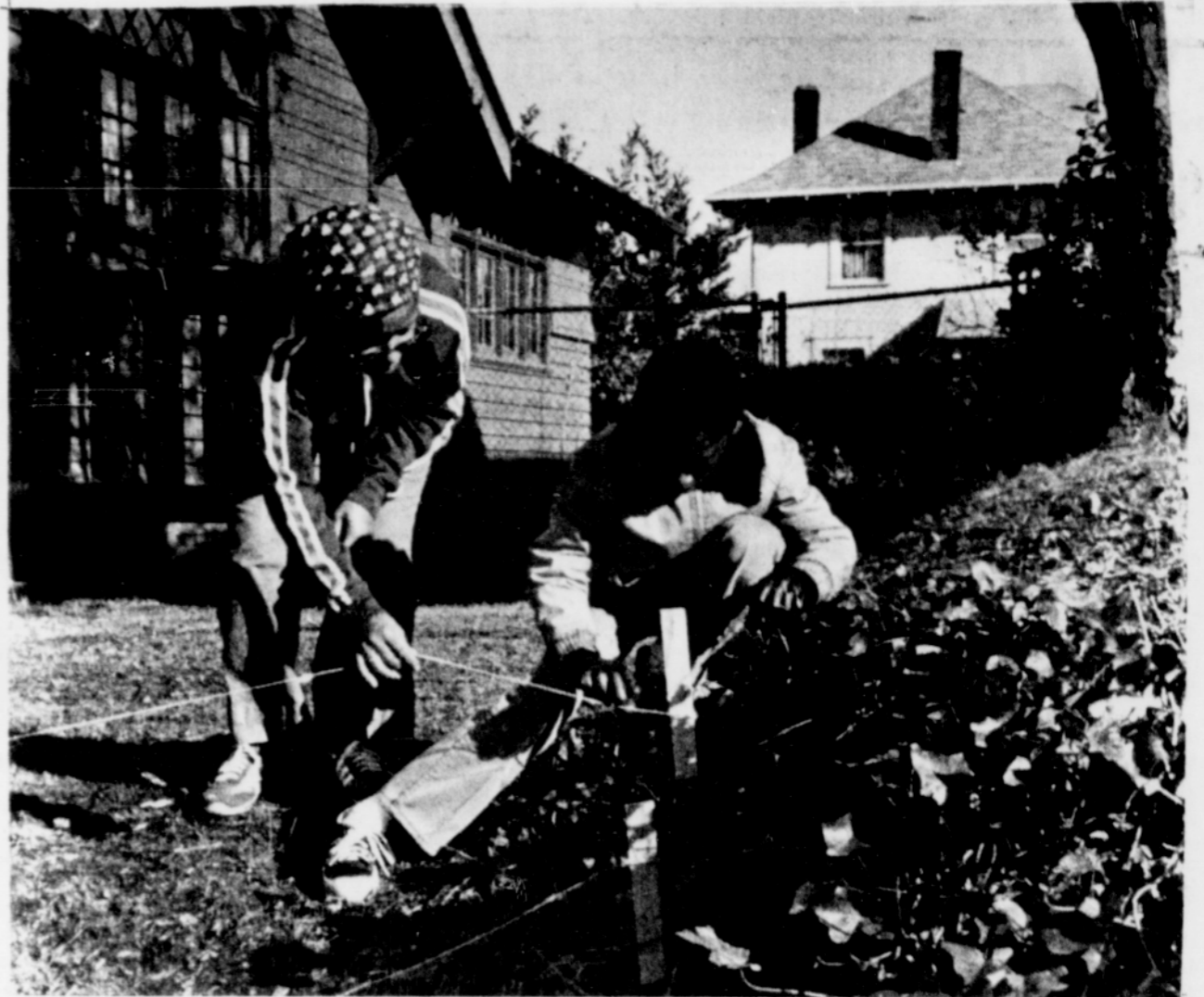




Lloyd Pierre shows Lumumba Kent how to plant cuttings.



Eliza Leech, BEC parent, helps Muhammad Rahman stake rows for plants.



Ayoka Kambon, teacher at the Black Educational Center, turns the first shovel full during the project to prevent erosion on the school grounds.

## Students learn conservation

by Richard Brown

The best way for youngsters to learn about the environment and the effect people have on it, is to learn directly from the natural environment.

Parents, teachers and students at The Black Educational Center (BEC) are combining their energies to convert the surrounding school ground into an outdoor classroom. Upon request, a Soil Conservation Service (SCS) representative visited the center, and along with the teachers, students and parents, an appraisal of the school site was made. Objectives were discussed and a plan was developed for the BEC.

Recently, one of the projects in the plan was started. The sloping ground in front of the center lacked sufficient vegetation to protect it. This fall, when the rains started, the students were able to observe that where the ground was barren, the soil was washed onto the sidewalk. To prevent further erosion, with the technical assistance of the SCS, the parents, teachers and students worked and fertilized the ground and planted periwinkle, a trailing evergreen plant. With the planting complete, barkdust was spread around the plants and covered with netting to keep it in place. With a little care and time, the area will grow to a low maintenance cover, providing protection and beautifying the school grounds.

(Photos: Richard Brown)

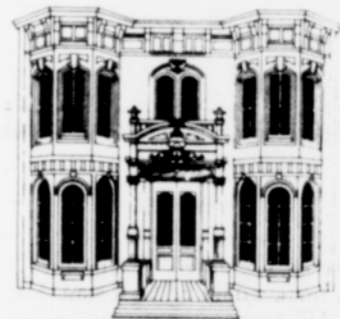
## School bus most used

The yellow school bus is the chief means of transportation to school for elementary and secondary school students, followed by walking and private automobiles, according to a report from the Bureau of the Census, U.S. Department of Commerce. The report, based on a nationwide survey, is the first of its kind published by the Bureau to measure the distance, time, and mode of transportation of students.

School buses are needed to transport about 20 million or 40 percent of the 49 million students to and from school. The report notes that by contrast, only 7 percent of public school students are estimated to have been transported to school at public expense 50 years ago.

The growth in the use of school buses is most evident for elementary school students. Comparison of the new figures, gathered in October 1978, with those from a 1969 study shows an increase from 37 percent to 43 percent in the proportion of students in kindergarten through grade 6 transported by school bus.

The Morris Marks House  
1501 SW Harrison Street  
Portland 97201  
Telephone: 227-2688



**DES CONNALL**  
Professional Corporation  
**LEGAL CLINIC**

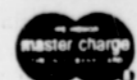
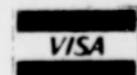
### CONCENTRATING IN THE FIELDS OF:

- |  |                      |
|--|----------------------|
| CRIMINAL LAW                               | INDUSTRIAL ACCIDENTS |
| DRIVING UNDER THE INFLUENCE OF INTOXICANTS | DOMESTIC RELATIONS   |
| WORKERS' COMPENSATION                      | BANKRUPTCY           |
| PERSONAL INJURY                            | WILLS - PROBATE      |
| AUTOMOBILE ACCIDENTS                       | CONSUMER PROTECTION  |

If you have a problem that is not covered in this list, please call and ask whether we can help. Chances are, we can. If not, we can recommend someone else for you to call. One way or the other, we want to see you get the kind of professional legal counsel you're entitled to.

The best time to call us, or any attorney, is before you are embroiled in a legal problem. This is called preventative law and it makes a lot of sense.

Regardless, when you call us we will arrange for an initial consultation at your convenience. Cost: \$20. We probably can't solve anything in this meeting, but it is a chance for you to explain your particular problem and for us to give you some idea of what it'll take to reach a solution. If you want us to proceed, we'll give you an estimate of the fees you should plan on. In writing.



## STOP LOOKING BUY TOMORROW'S SECURITY FOR YOUR FAMILY TODAY



New 3 and 4 bedroom homes with or without family rooms in Vancouver close to I-5 and 8 minutes from Interstate bridge. Include 2 baths, double garage, brick fireplaces, range, dishwasher, garbage disposal, w/w carpets. All are energy efficient with 10 year Home Owner's Warranty. Cash price for 3 bedroom with 1036 sq. ft. would be \$47,000, 10% Annual Percentage Rate with 360 monthly payments at \$412.46 principal and interest plus estimated taxes and insurance.

Veterans move-in for \$100.00, FHA purchaser's move in approx. \$2,650.00.

**HERMITAGE REALTY, INC.**

4715 St. Johns Rd.  
Vanc., WA 98661

Vanc. 694 8577  
Prid. 223 8229

