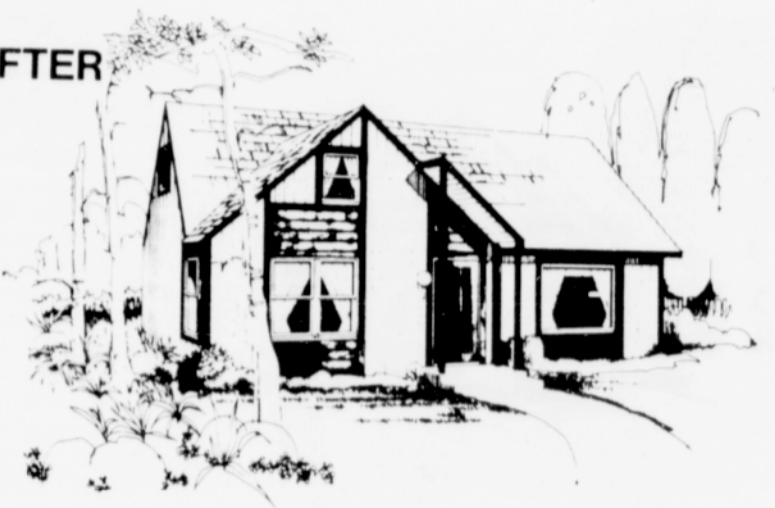


Re-siding can up-date home



BEFORE AFTER



Older homes are soaring in value right along with new homes in today's heated housing market.

The value of that comfortable but drab-looking older home can be increased by upgrading its exterior appearance through re-siding.

Whether you want to increase the resale value of your home, remodel a recently-purchased older house, or simply improve the appearance of your home, hardboard siding materials can convert the aging house to either a traditional or contemporary look.

With the broad range of colors and patterns available today, there's no limit to creativity in renovating an older home. You can revive the character of a classic design or totally change the personality of a home with horizontal lap siding in warm, muted colors for a quaint, clapboard effect; with vertical planked panels reproducing the grain and texture of natural woods in rich, earth tone colors; with panel siding which simulates the ski-troweled surface of real stucco—without the mess.

The typical 1½-story home at upper left, for example, can be converted to a contemporary rustic design with prestained vertical panels contrasting with horizontal lap siding stained rich brown to highlight windows. A re-designed entry shelter with front door accenting the ver-

tical lines, illuminated with a modern globe fixture, completes the contemporary effect.

The standard split-level home below was transformed into a traditional English Tudor style with stucco-like panel siding accented with half-timbers over joints for authenticity. A hint of a hip-roof over the left gable, plus

diamond-shaped mullions on windows and doors, adds to the 16th century English decor.

Today's hardboard siding materials are durable and weatherresistant, too. Hardboard sidings are corrosion-free and resist denting, splitting, cracking and hail damage for many years.

Always Big Savings at Builders' City

Bring this ad with you for the lowest prices in Building Materials!



YOU SAVE because WE BUY other business!

Overstocks-Liquidations-Bankrupt Stocks

Special July Sale

10% EXTRA OFF all Paneling
 10% EXTRA OFF all Plumbing
 10% EXTRA OFF all Doors
 10% EXTRA OFF all Electrical
Remember—these are ADDITIONAL savings over and above our already low advertised prices!

Roofing:

3 Tab #2 \$17.95
 #2 Roll Roofing \$3.75 & \$7.95
 Also some 3 Tab & Poles for less

Cabinets, Vanities & Counter Tops

Kitchen Cabinets Closeout
 K.D. in Cartons 80% Off. \$19-\$24-Utility
 Lane Vanities & Cabinets K.D. \$5
 Cabinet doors '99 —Drawer Fronts 25¢
 Marble Kitchen-Bath Panels \$7 to \$11
 Small Bath Vanities-Marble top \$29-\$39
 Corne Marble or Fibre-glass tops \$19 U-
 Pice
 5 Ft. Bath tubs from \$10 to \$39
 Basins — Sinks \$3 to \$10 Insurance
 claims
 Tub Enclosure 4 ft. ft. \$29.95

Cedar Fencing

8'x5' Fence Sections \$20
 8'x6' \$25
 Cedar Boards 4" from 49¢
 Cedar Boards 6" from \$1.29

Doors

Blind Closer doors 13 Panel 2 door \$6
 4 door \$12. Paint Grade, hinged track.
 4 to \$6
 Metal Blinds 2 door \$5 4 door \$18
 Front or back doors insulated \$14 to \$19
 Solid Core wood doors \$14 to \$19
 3000 Interior doors \$3.75-\$7.95
 Prehung doors \$19 some \$14*
 Prehung Front doors \$75 to \$99

Siding & Boards

Plaster bd. 4x8 #1 \$3.99
 Damaged Plasterbd \$2 Cleanup
 Plasterbd nails 2 sizes
 50lb \$8
 Hardbd 4x8 2000 pcs \$2.49
 Upsom Board 4x8 textured \$2.99
 T-111 Cladwood 4x8 rejects #2 \$15
 T-III 4x9-shop \$11

Misc.

R-11 Insulation \$13
 R-19- \$22
 Electrical Conduit every size
 Insurance Claim 1/2" \$10 1/2 25¢

PAINT SPECIAL

6000 GALLONS
 1/2 PRICE and LESS
 6000 gals. 1/2 price or less. Sherwin-Williams closeout, qts-gals. 5's, 13, 15 or 1/2 Retail Outside, Inside, Stains, Enamels, etc. Brushes, rollers, tape, Sundries 40% Off.

ALUMINUM WINDOW AND PATIO DOOR SPECIAL

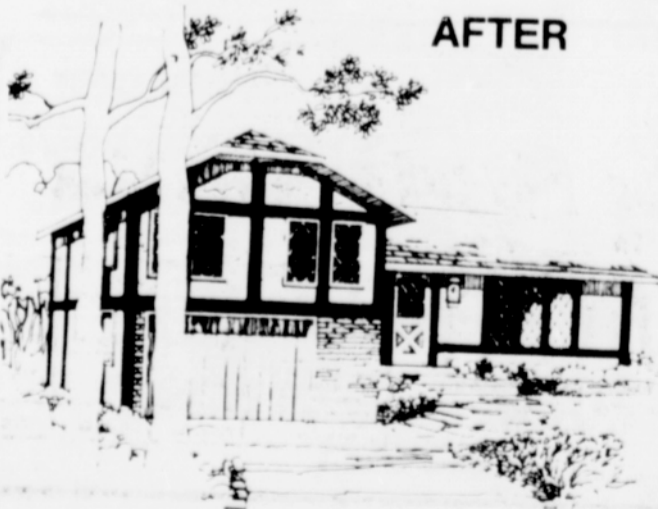
900 Alum Windows mostly insulated Mill Cleanup 1/2 price or less. Insulated glass from \$3 to \$10. Patio door, size, sizes \$19. Use for windows. Wind screens, wood windows cleanup from \$10 each.

PANELING SPECIAL

(Mill Surplus)
 OVER 5000 PIECES
 SOME \$1.99 AT & \$2.99
 Most paneling \$3.50 to \$6.95
 Many Masonite Panels reg. \$11.95 now \$7.95.
 12" Panels stripe 8 ft. long 25". Panel molding Ga. Pacific, Jarwood 1/2 off all wood moldings 5¢ to 10¢ save 1/2



BEFORE



AFTER

Builders' City 8905 N. Vancouver Ave., Portland

Across from G.I. Joe's

285-0546

Open everyday Sunday-Holidays Bank Cards Welcome