

Transforming eating into dining with the flick of a switch

The lighting of the dining room is one of the most important decorative decisions in the home. Particularly in the chill days of fall and winter, and during the holiday season, the dining

room is in much use as a place for elegant entertaining, family conviviality, and the celebration of holidays.

With the proper lighting, the enjoyment of dining is enhanced. Focused down-

lights shine on glass, china and silver to create a delightful shimmer that is visually exciting, stimulating to the mind, and encourages conversation.

The central chandelier is

usually expected to carry the full load of lighting in the dining room, but specialists taxing over wine.

The styling and size of the fixture is also an important consideration. The fixture

should either contrast or complement the overall decor of the room. Therefore, a smoked-glass and chrome fixture would complement a contemporary room, and the sinuous curves of French

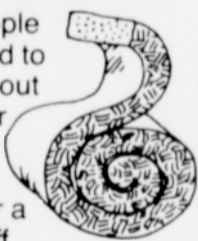
What costs more to put off than put in?

Insulation.

There are people who find it hard to get excited about insulating their homes.

But like it or not, the longer a person puts off having enough insulation, the more it's going to cost them.

By insulating ceilings, floors and ductwork, for example, you could cut your heating energy use up to



30% or better. Insulation helps keep you cooler in summer, too.

So now is the time to take care of this important job. Do it before winter sets in.

To start with, get the PGE booklet, "How to insulate your home." It has 24 pages of solid, pertinent information that can help you do it yourself or help you know what you're talking about when the insulation contractor comes to give you an estimate.

If you need insulation — and 80% of our customers do — invest some time and money into it now. And when that first cold day next winter comes around your

investment in savings and comfort will start paying off.

The fact is, we have 16 different booklets full of the kind of energy-saving hints that can help you save 10% or more of your electricity costs. Select the booklets you feel will help you save energy around your home and we'll mail them to you quickly. Use the coupon below. We want to help. We want you to know all the ways to save energy.

PGE

PGE Conservation Center
Portland General Electric
P.O. Box 1788
Portland, OR 97207

I want to save energy and money. Please send me the booklets I have checked. Thank you.

- "How to Insulate your House" brochure
- "Watt Watchers' Guide" with energy conservation tips
- "Agricultural Watt Watchers' Guide"
- "How to Insulate Water Heaters"
- "How to Caulk and Weatherstrip"

- "Getting the Most From Your Electric Heat System"
- "Getting the Most From Your Electric Furnace"
- "How to Make Inexpensive Wooden Frame Storm Windows"
- "How to Wrap Ductwork"
- "How to Make Metal-frame Storm Windows"
- "How to Hang a Wooden Storm Door"
- "How to Insulate an Unfinished and Finished Attic"

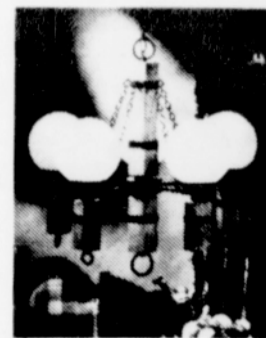
- "How to Double-glaze or Make Storm Windows for Irregular-shaped Windows"
- "How to Build Large Storm Door for Sliding Glass Doors"
- "How to Stop Drafts Under Doors"
- "How to Insulate Concrete Walls and Slabs"

Comments: _____

Name: _____

Address: _____

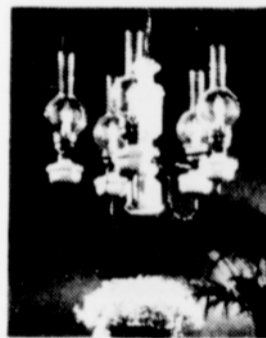
City: _____ State: _____ Zip: _____



A rustic chandelier provides a warmly welcoming accent in an informal dining room. The hand-rubbed design and frosted globes is reminiscent of a Western ranch house, in earlier pioneer times.

Provincial furnishings would be accented by the elegant simplicity of a Georgian brass chandelier.

The size of the fixture should be in proportion with the size of the room.

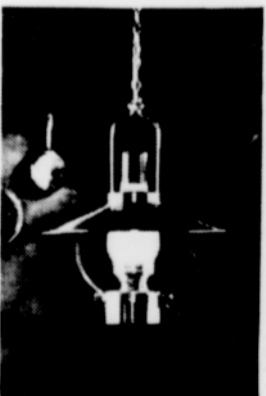


A graceful fixture executed in white ironstone is formal enough for a more elegant decor, yet still contemporary in its simplicity of design. A built-in downlight provides lighting on the table settings.

Most fixtures are hung too high over the dining table. AHLI specialists comment. If the fixture is suspended from 30-36" above the surface, it provides a gentle wash of light and is still low enough for appreciation of the fixture itself.

For even more flattering "people light," place the lighting on a dimmer switch as restaurant designers do.

A little "lightplan" will create a dining room where meals become a memorable experience for family and friends.



Traditional American "oil lamp" is carefully reproduced in gleaming brass to continue the current interest in "nostalgia" furnishings. Design has concealed downlight, controlled by a 3-way switch.