



*We see the world
through Black eyes*

Vote on November 7th

Another election has rolled around and once again candidates have come forward asking for votes. Many of the successful candidates will never be seen or heard from again until the next election, many will not come back to talk with the voters who elected them. A few will be seen in the community, attempting to maintain communication, and making decisions in their elected positions that benefit the common people.

But this is not entirely the fault of the office holders. Communication is a two-way street. Although elected and paid by the people, most of the contacts and pressure to support particular points of view come from paid lobbyists and special interest groups. The voters have not applied pressure to insure that they are heard, have not monitored their votes and activities, and merely forget them until election time comes around again."

The failures that we see in the Democratic process are not due to natural flaws in the system, but are the result of an apathetic electorate.

Another difficulty facing the voters as well as those seeking office is that it is fast becoming a fact that unless a candidate has access to large amounts of money — and this money is usually provided by utilities, banking interests, the medical professions, timber companies and unions — he cannot be heard. Hours of talking to the voters and years of service can be overwhelmed by an intense media blitz. The same is true of Ballot Measures, which usually have a group of concerned citizens on one hand and an industry that will be adversely effected on the other side. Who has the money?

☒ Governor — Bob Straub

The best choice for Governor is Bob Straub. In his first four years in office Straub successfully requested the creation of an Affirmative Action Office of the Legislature, hired more Blacks on his staff than any previous Governor, and brought the number of Black State employees to a higher level. He has taken strong — if unpopular — stands against the death penalty, for the right of abortion, called a special session to deal with tax limitation Measure 6. Although he does not have the ability to gain favorable publicity that some of his predecessors have, he has proved to be Oregon's most capable Governor since Robert Holmes. He deserves another four years.



☒ U.S. Senate — Vern Cook

Is money taking the justice out of the elective process? In a highly furnished campaign (\$259,797) Mark Hatfield is seeking a third six-year term in the U.S. Senate. His Democratic opponent, State Senator Vern Cook, is relying on his twenty-two year record in the Oregon Legislature and an effort to meet the voters across the state.



Cook has demonstrated his belief in equal rights and his attention to those issues that

protect the rights and improve the lives of the poor. The *Observer* endorses him for election to the United States Senate.

☒ Labor Commissioner — Wendy Roberts

Mary "Wendy" Roberts is a candidate for Labor Commissioner, which has responsibility for the Civil Rights Bureau and Apprenticeship. Two of the most important State functions relative to minorities. The Civil Rights Bureau still does not bring prompt and effective justice for those who are victims of discrimination and the minorities are not included in fair proportion in apprenticeships. Mary Roberts is one of the few elected officials who has dealt first hand with the suffering caused by racism, having worked in the Albina office of Children's Services and the Juvenile Court. She will not only have the commitment to make the Bureau function properly, but has the knowledge of management and the strength of will to make changes.



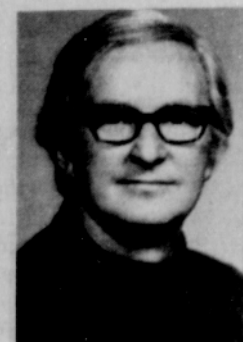
☒ Superintendent of Public Instruction — Vern Duncan

The race for Superintendent of Public Education is between current Superintendent Vern Duncan and Mt. Hood Community College professor Ruth McFarland. Dr. McFarland has good ideas and a flamboyant personality, but has not dealt with the realities of administering the complex Department of Education. Dr. Duncan, on the other hand, is quiet and reserved — not much of a campaign speaker — but he has guided the Department of Education for the last four years in a responsible manner. His main thrust in his first four years was on reading, and reading scores have improved across the State. He deserves re-election and gets the *Observer's* endorsement.



☒ District 16 — Wally Priestley

Wally Priestley has served District 16 well, and during his six sessions in the Legislature has remembered who sent him there. Although Priestley's failure to succumb to the dictates of well-financed special interest groups has brought him condemnation by the white press, his voting record on those issues of concern to the ordinary voter is excellent. For example, the Oregon Consumer League rates his Legislative voting record as 100%; Common Cause 100%; Oregon State Council of Senior Advocates, Excellent; Oregon Women's Political Caucus 94%; Oregon Environmental Council 90%; and AFL-CIO 84%.



☒ District 15 — Jim Chrest

Jim Chrest has represented North Portland since 1974, serving on the Committee of Education and on Intergovernmental Affairs. He has worked for consumer protection, including unit pricing, compensation for crime victims, and aid to elderly persons in their own homes.

Chrest has the independence and intelligence to make him an asset to the Legislature, and to the residents of his District.

☒ MSD Executive — Rick Gustafson

The extremely important races for Metropolitan Service District Executive and council members are all but overlooked in the shadow of the hotly contested Governors race and numerous ballot measures. The persons elected to these new positions will control in large part land use planning, solid waste (dumps and garbage), transportation, highway placement (including Union Avenue redevelopment), and eventually possibly housing, economic development, Tri-Met and the Port of Portland.



Rick Gustafson, a former Legislator, has the knowledge and experience to get MSD off to a good start.

☒ MSD Council, Position 11 — Robert Phillips

Robert Phillips receives the *Observer's* endorsement because, since his return to Portland following graduation from Oregon State University, he has been visibly involved in grass roots organizing. An active member of the King and Sabin Neighborhood Associations, Phillips is involved both through his employment with Adult and Family Services and his community activities in developing and guiding programs for youth, the elderly, the handicapped, institutionalized persons and the poor. As Chairman of the Northeast Police Precinct Council he has demonstrated an ability to bring opposing factors together to discuss the differences, to work under pressure, and to see behind the obvious.



☒ MSD Council, Position 12 — Nick Barnett

Nick Barnett is the Executive Director of the Metropolitan Human Relations Commission and therefore is experienced in the multitude of problems and pressures that effect the life of the community. A professional social worker, Barnett has had previous experience in higher education as it relates to career development. His main concerns if elected to the MSD Board, will be to insure that planning for the growth and development of the metropolitan area will provide a positive impact on inner-city residents.



Barnett has the experience and the sense to perform this function well.

☒ MSD Council, Position 8 — Carrie Miller

Carrie Miller, a former teacher, is president of the Portland Federation of Teachers (AFL-CIO) which represents teachers and non-professional employees, and Secretary of the Oregon Federation of Public Employees. She serves on the City of Portland's Economic Development Council. She has demonstrated a determined concern for human rights and for ethical principles in her dealings with the Portland School District. She has the independence and the intelligence to contribute greatly to the MSD Council.



☒ Measure 51 — Yes

Count all those cavities and fillings in your mouth. Add up the money it cost to repair them — and the pain, loss of work, and inconvenience it cost. Check out the mouths of little children in Oregon, who got their first cavities about the time they began kindergarten. Check out the mouths of the elderly who are too poor to replace extracted teeth.

Is all this necessary? No. One of Portland's greatest health hazards could be avoided easily, safely, and cheaply. Don't be deterred by those that cry "poison" — "communism" — "corrosion."

Vote yes on Measure #51 to fluoridate Portland's water.

☒ County Chairman — Don Clark

Don Clark, Chairman of the Multnomah County Board of Commissioners, deserves re-election. Clark, though plagued with shortage of funds, has kept the county fiscally secure. His health program, providing health care for the poor through the normal health care channels, is acclaimed throughout the nation.



Clark has been responsive to the community and through the Quadrant Advisory Boards has sought citizen input in decision making.

Earl Blumenauer and Gladys McCoy, both Democrats, are certain of election. Mrs. McCoy will be beginning a new position — a full time, paid position — with a clean slate and should be judged on her future performance, not on the past. We wish her the best.

☒ District Court — Betsy Welch

Elizabeth Welch is seeking election to the Circuit Court, Department of Domestic Relations, to which she was appointed by Governor Straub. Judge Welch has extensive experience in the field of domestic relations and juvenile law. As a Deputy District Attorney assigned to the juvenile court, she specialized in child abuse and neglect cases. As director of the city's LEAA High Impact program she was instrumental in planning and obtaining funding for juvenile offender treatment and for crime prevention programs. Her emphasis on early detection of delinquency and provision of services to families and children in trouble, results from her years of experience with family and juvenile law.



☒ District Court — William Snouffer

William Snouffer has been a judge in the District Court since 1976. He is a former Deputy District Attorney, a law school professor and a trial attorney in private practice. He has been rated by attorney's as the most outstanding District Court judge and is known for his fairness and impartiality. He was appointed to the Judicial Conduct Committee and the Judicial Fitness Commission. Intelligence, courage and integrity are the most valued qualifications for a man who makes decisions about other people's freedom. Judge Snouffer possesses these credentials.



Be Decisive. Vote No!

Vote No on Measure 6 and No on Measure 11. Both Measures are an attempt by frustrated taxpayers to obtain relief from property taxes. Basically, Measure 6 would place a limit on all property taxes raised and Measure 11 would have the state pay a portion of the residential property taxes out of income tax revenue.

Measure 6 is the original initiative patterned after California's Proposition 13, and Measure 11 is the Legislature's effort to soften the blow.

Both Measures will bring drastic cuts in city, county and state services — schools, police and fire, social programs, parks and recreation, health care, etc.

Who will be hurt most by these Measures? The people who are dependent on state and local services — the elderly, children and youth, the ill and handicapped, minorities and the poor. These Measures are racist in their intent and application vote No on Measure 6 and on Measure 11.

☒ Measure 10 — No

Measure #10 is another attempt to get LDCD (The Land Development and Conservation Commission). This measure would eliminate the state land use goals that have been written by LDCD with citizen input and would require the Legislature to rewrite the goals within 60 days or LDCD will be eliminated.

The people of Oregon have spent years developing comprehensive plans to guide development in their neighborhoods. This measure would not only negate all of that work, but would be a step backward, placing local planning in the hands of a Legislature already over burdened and restricted by political considerations.



ALFRED L. HENDERSON
Editor/Publisher

PORTLAND OBSERVER

Published every Thursday by Exie Publishing Company, 2201 North Killingsworth, Portland, Oregon 97217. Mailing address: P.O. Box 3137, Portland, Oregon 97208. Telephone: 283-2486.

Subscriptions: \$7.50 per year in the Tri-County area, \$8.00 per year outside Portland.

Second Class Postage Paid at Portland, Oregon

The *Portland Observer's* official position is expressed only in its Publisher's column (We See The World Through Black Eyes). Any other material throughout the paper is the opinion of the individual writer or submitter and does not necessarily reflect the opinion of the *Portland Observer*.

National Advertising Representative
Amalgamated Publishers, Inc.
New York

1st Place
Community Service
ONPA 1973

1st Place
Best Ad Results
ONPA 1973

5th Place
Best Editorial
NNPA 1973

Honorable Mention
Herrick Editorial Award
NNA 1973

2nd Place
Best Editorial
3rd Place
Community Leadership
ONPA 1975

3rd Place
Community Leadership
ONPA 1978

