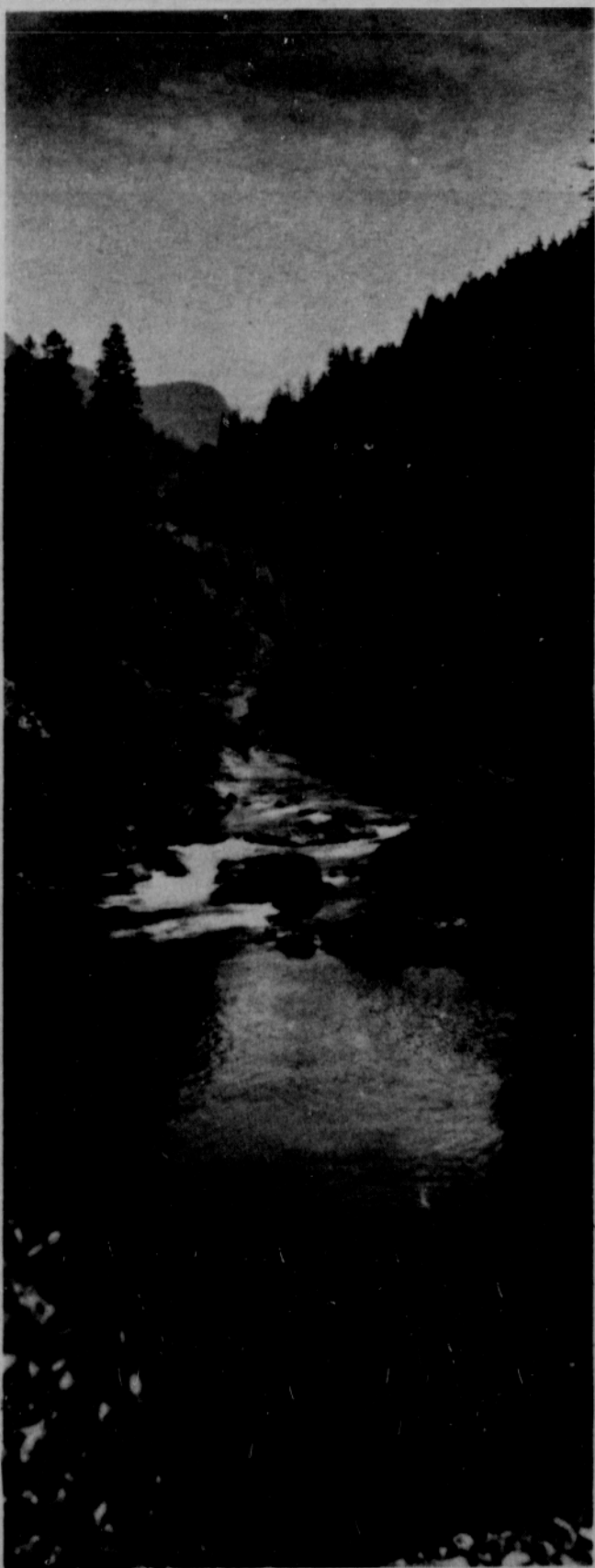


Thousands of years ago Mount Mazama was a 12,000 foot volcano, one of a chain that runs the length of the Cascade range. Then about 6,000 years ago, Mount Mazama blew its top. In a series of eruptions gas and steam bust upward, frothy pumice spewed out covering the land for miles around, and lava flowed out of the fissures caused by the accompanying earthquakes. Mazama became an empty shell until one day it collapsed, and in the place of the mountain top was a huge hole. This hole gradually filled with water, creating a large lake. Later volcanic activity created the cinder cone in the lake, Wizard Island.

Crater Lake, a National Park since 1902, is a place of great beauty. The deep blue waters form the deepest lake in the United States — 1,932 feet — and its rugged rock walls tower as high as 2,000 feet above the surface.



One of Oregon's most beautiful streams is the Clackamas River.

**The People  
at Pacific Power  
welcome the  
NAACP to Portland  
and salute  
your many fine  
accomplishments.**

See us for energy saving  
ideas you can bank on.

The People at Pacific Power.