

When Central Oregon's lava fields cooled and erosion began to wear away at the tall Cascade peaks, Broken Top Crater assumed this craggy pose. Located in the heart of the Three Sisters Wilderness Area west of Bend, this mountain serves as a goal for day-long hikes

from the many forest camps along scenic Century Drive. Glacial lakes and year-around snowfields are among the rewarding attractions on the lava slopes and activities include fishing, boating, camping, picnicking and photography.

## We Welcome The NAACP



**LINOLEUM CITY**  
**Decor Center**  
 WALLCOVERINGS, BATH ACCESSORIES,  
 CUSTOM SHADES, FULLER PAINTS.

**BATH**  
**OUTIQUE**

### PLUSH BATH CARPET



NEW TREVIRA POLYESTER  
 MACHINE WASH & DRY  
 PLUSH CARPET  
 WITH NON-SLIP  
 DURAGEN  
 BACKING.  
 • 6 COLORS  
 • REG. \$7.25

**\$5.95**

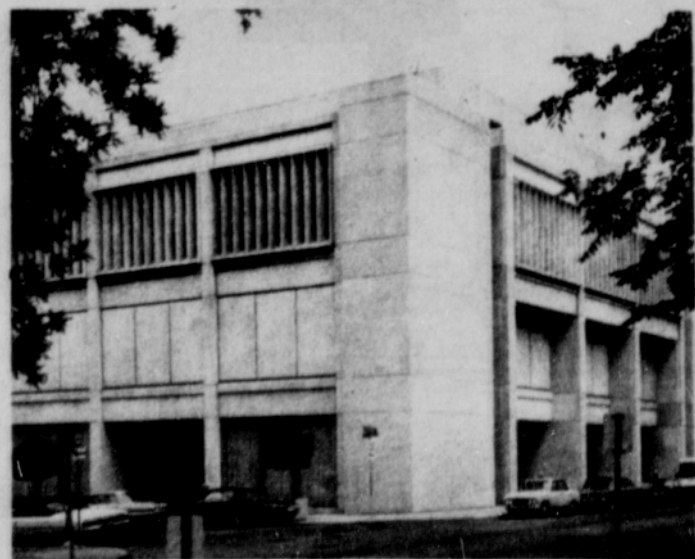
LIN. FT.  
 6' WIDE  
 ACROSS  
 FROM  
 SEARS

**LIN@LEUM CITY**

PHONE 234-7271 • 500 N. E. UNION • 505 N. E. GRAND

## BLACKS IN THE WESTWARD MOVEMENT

A special exhibit at the  
**OREGON HISTORICAL SOCIETY**



From the early explorations to the early 20th-century enterprises, a richly illustrated history of Black settlement in the American West.

**OREGON HISTORICAL CENTER**

1230 S.W. Park Avenue

Three blocks from the Hilton.

No admission charge.