



Mt. Hood's Timberline Lodge stands at the 6,000' level, where it is accessible the year-round.

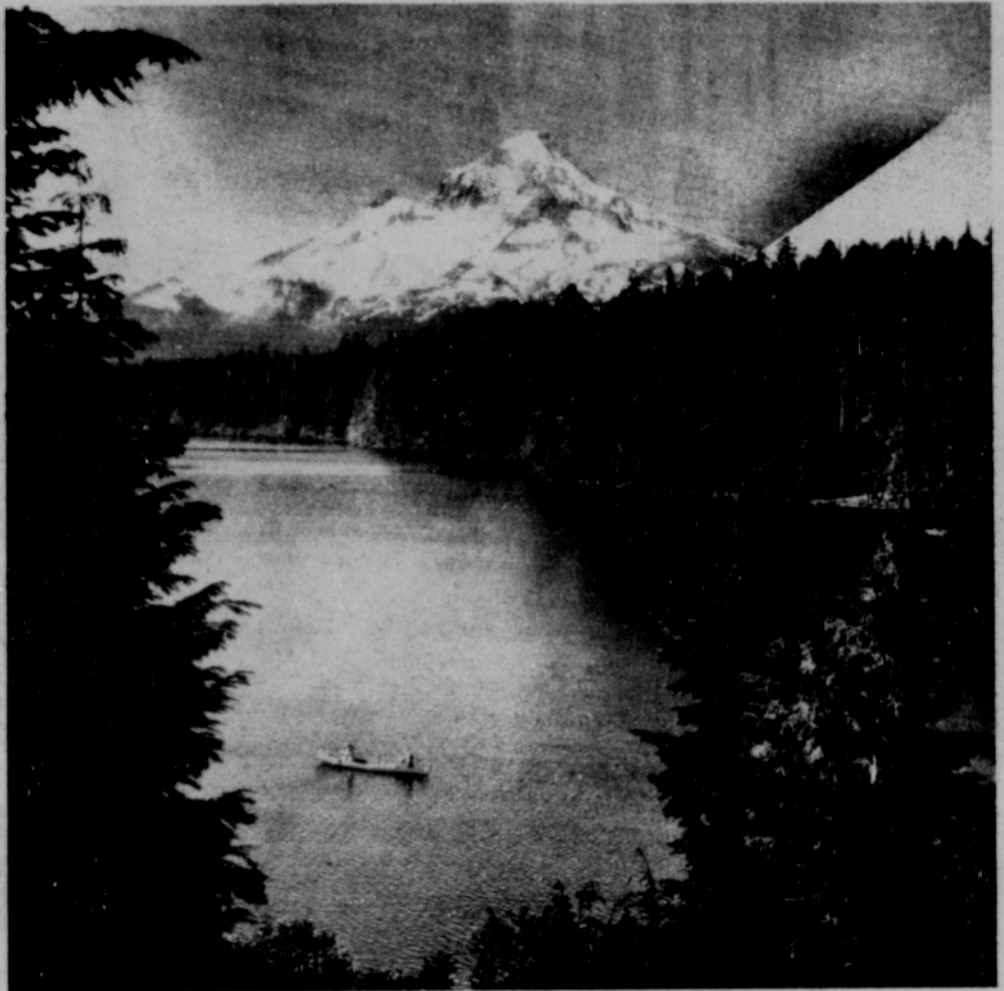
The Cascade Mountains, are complete with glacier-capped volcanic peaks — Mt. Hood, Jefferson, Washington, the Three Sisters, Three Fingerted Jack, McLaughlin, others.

The glacier-capped volcanic peaks — Hood, Jefferson, Three Fingerted Jack, Washington, Thielson, McLaughlin and others — stand like sentinals above the Cascade range. At their feet are thick forests, jewel-like lakes, stark lava beds, roaring rivers.

It was these mountains that formed a barrier for those pioneers who would have struck off to the southwest from Fort Hall to find a less-hazardous path to the Willamette Valley, and one not controlled by the British Hudson's Bay Company.

One of the men who discovered and built this long-awaited road — the Applegate Trail — was the previously mentioned Moses "Black" Harris. Harris had spent his early life exploring and trapping the Rocky Mountains with Jim Bridger, Jedediah Smith, Jim Beckwourth, the Subletts and other now famous fur trappers. A highly respected mountain man, he was one of a small group selected by Jesse Applegate to find a pass through the Cascades.

U.S. I-5 roughly follows the trail built by Moses Harris and the others, as it connects the Willamette Valley with Grants Pass and Medford in the Rogue River Valley.



Majestic Mt. Hood towers over beautiful Lost Lake in the Mt. Hood National Forest. The tallest mountain in the state, Mt. Hood rises 11,235 feet in Oregon's Cascade Mountains and is noted for its excellent skiing conditions. Lost Lake, north of the awesome peak, is one of the state's most popular vacation spots.



PUBLISHERS
TIMES MIRROR

Mills located in Oregon:

- | | | |
|-------------|-----------|------------|
| Oregon City | | Toledo |
| Newberg | Molalla | Philomath |
| Clackamas | Tillamook | Sweet Home |

Other locations:

- | | |
|----------------|-----------------|
| Anacortes, Wa. | Virginia, Minn. |
| Burney, Calif. | |

PUBLISHERS WELCOMES THE OPPORTUNITY TO EMPLOY QUALIFIED FEMALES AND MINORITIES WITHOUT REGARD TO NATIONAL ORIGIN, SEX, AGE, RELIGION OR HANDICAP.

HOPEFULLY, WE CAN, AS AN EQUAL OPPORTUNITY EMPLOYER OVERCOME SOME OF THE SOCIOLOGICAL BARRIERS WHICH HAVE EXISTED IN THE PAST AND FORM A BETTER RELATIONSHIP WITH FEMALE AND MINORITY GROUPS.

PUBLISHERS
PAPER TIMES MIRROR

419 MAIN ST.
OREGON CITY, OREGON 97045
PHONE (AREA CODE 503) 656-5211

Jeanne Whitney
Equal Opportunity Coordinator