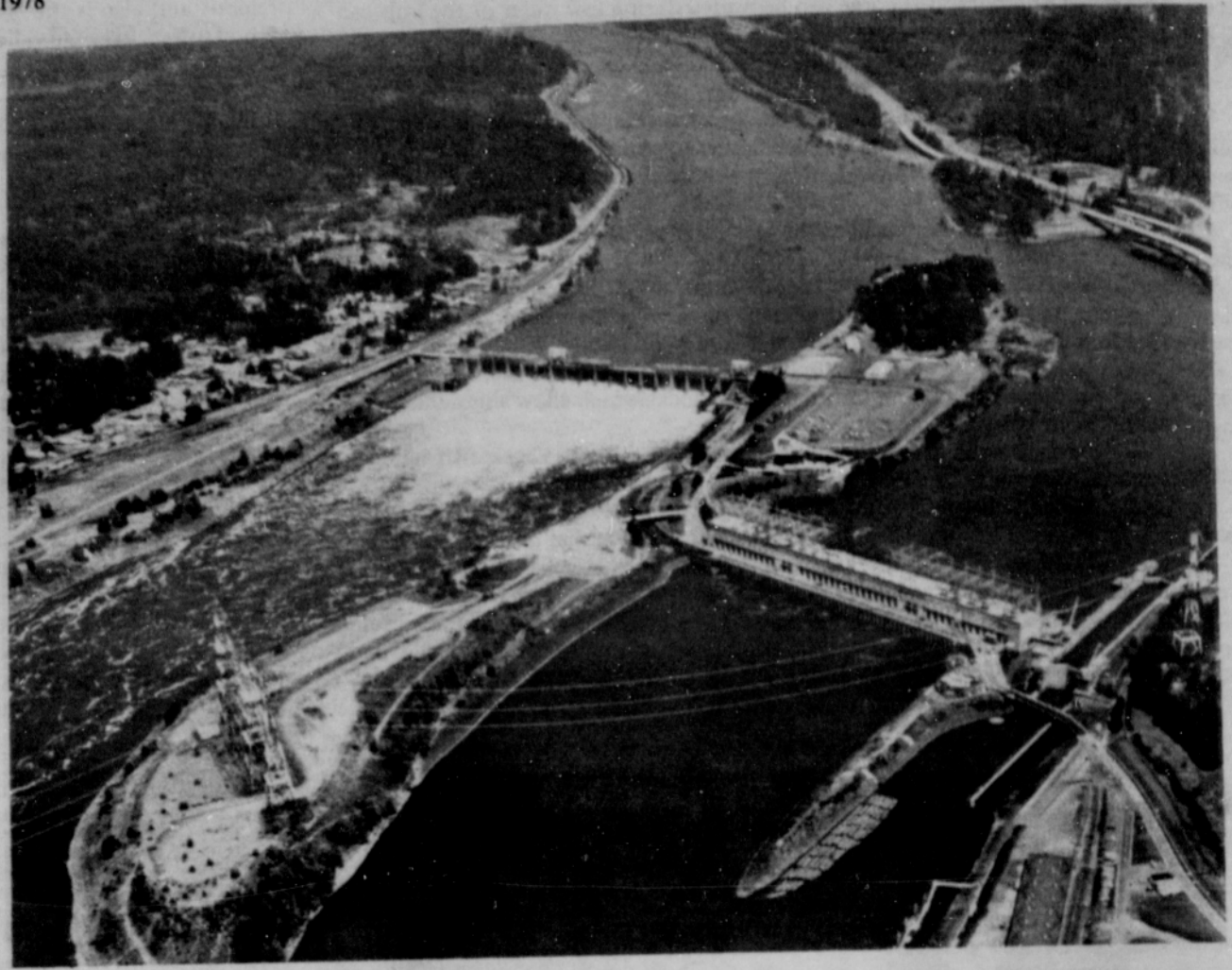




Visitors to the fish ladders at Bonneville Dam try to catch a glimpse of migrating salmon. Fish are more easily seen at the underwater fish viewing windows in the modern visitor center, open every day. (Army Corps of Engineers photo)



One of the Northwest's familiar landmarks is Bonneville Dam, forty miles east of Portland on the Columbia River. Visitors are welcome to tour the dam daily. A modern visitor center has exhibits explaining how the

dam operates and telling about the history and environment of the Columbia River Gorge. Fish ladders at the dam are a popular attraction with visitors. (Army Corps of Engineers photo)

# Bob **BROWN** SAYS **YES**

## TO A BRIGHTER FUTURE FOR **ALL!** **Welcome N.A.A.C.P.**



**ARNOLD  
RICHARDSON**

ASK **ARNOLD RICHARDSON** AT THE  
CONVENTION CENTER ABOUT OUR ...

**BEST**

★ **PRICE**

★ **SELECTION**

★ **SATISFACTION**

**Bob**

# **BROWN OLDSMOBILE**

1005 S.E. GRAND  
(East End of Morrison Bridge)

# **232-4163**