

stormy skies. The ocean waves — crashing on the rocks and sending their spray a hundred feet into the air, might become the rolling breakers gliding across the broad expanse of sandy beach.

A small cove provides shelter against the wind for the sailing sea gulls; the bay is home for striped bass, dungeness crabs and long-necked clams.

The sounds also change — the fog horn guiding the ships to safe passage, the mill whistle signaling the crew back to work, the gulls riding before the storm.

The Oregon coast provides for much of the economic life of the state — timber, dairy farming, fishing, tourism — and is dotted with tiny towns and major seaports.

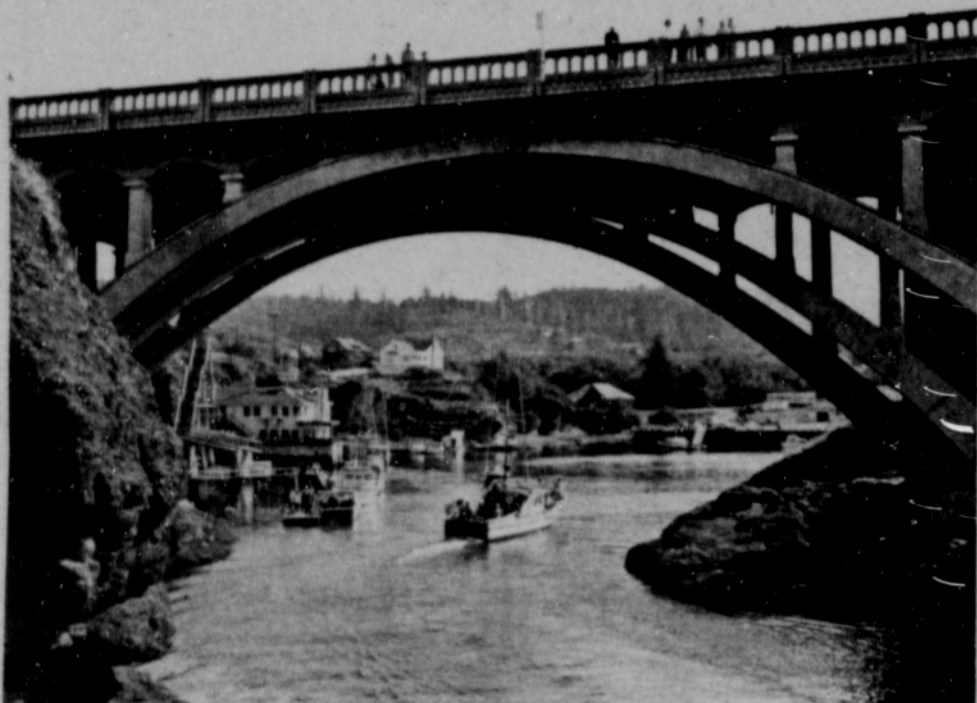
**The North Coast**

To the north of Neahkanie, at the terminus of the "Sunset Highway," Highway 26, is Seaside. Called the end of the Lewis and Clark trail. The site where the expedition reached the sea is marked by a monument on Seaside's "board walk."

Seaside, which is located on a long sandy beach, is also the site of a reproduction of the Lewis and Clark salt cairn, with which they made salt to preserve their meat. The cairn was built at this place because it provided seawater, an ample supply of wood, a suitable camp site with fresh water.

An aquarium exhibits marine life and trained seals and the famous "salt water taffy" is prominently displayed in gift shops along the main streets.

Newport is located at the mouth of Yaquina Bay, crossed by an attractive arching bridge. On the ocean side, fishermen cast their lines from the jetty and children play on



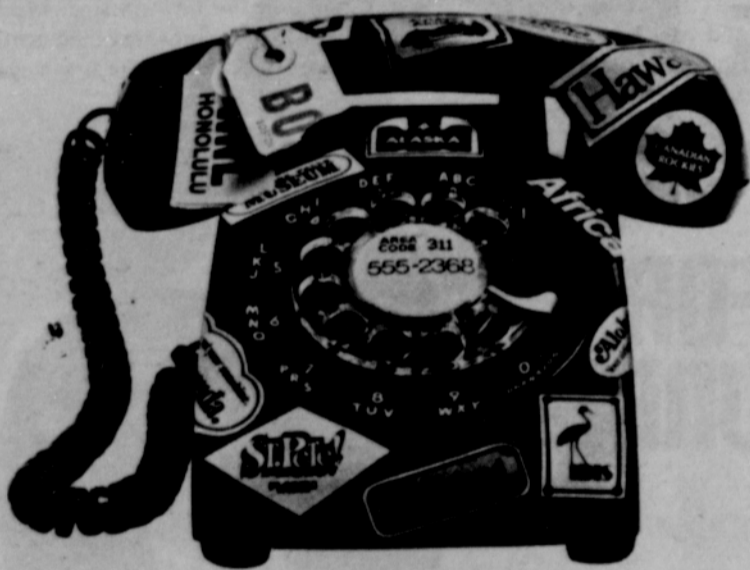
Through this narrow rocky channel, dozens of fishing and sport craft enter and leave tiny Depoe Bay each day. The U.S. 101 highway bridge is a favorite spot for visitors to watch the boats. Visitors also can go to sea aboard charter vessels to try their luck at catching salmon. Near Depoe Bay are several state parks and numerous sandy beaches.

Other legends speak of Black men who came ashore with Spanish sailors. One of these men is said to be an ancestor of the Tillamook Chief, Kilches, who was the leader of the band at the time the Americans settled around Tillamook Bay. Early settlers described Kilches as African in appearance.

Among the sailors who first viewed the rocky, fog-bound coast of Oregon from the decks of Spanish exploring vessels were Blacks. Black sailors also played prominent roles on the exploring vessels of the British and the Americans. The first documentation of a Black man setting foot on the coast of Oregon was that of Marcus Lopez.

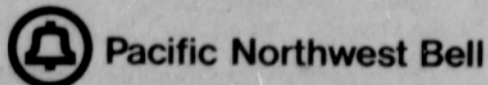
Lopez was, unfortunately, killed by the Indians with his own sword.

Oregon's coastline is as varied as is the state itself. The crashing surf varies from deep blue in the sparkling sunlight to forboding green that accompanies dark and



**SHARE YOUR TRIP WITH THE FOLKS BACK HOME.**

When you don't have time to write home, just pick up the phone and call. It's the easiest way to drop someone a line—without having to hunt for a stamp.



**JOE'S PLACE**

SEE SPORTS ON GIANT SCREEN T.V.

**The Friendly Tavern**

Ice Cold BEER

WINE

Owner: Joseph Benjamin

1801 NE Alberta  
288-8768

**PRESIDENTS DAY**

**SHOE SALE**

Women's and children's shoes  
**2<sup>97</sup> TO 6<sup>97</sup>**

Men's shoes  
**9<sup>97</sup> TO 14<sup>97</sup>**

- Savings for every member of the family
- All new merchandise from our regular stock
- Not all sizes in all styles

**Gallenkamp shoes**  
keep America on its feet

PRICES GOOD AT  
LLOYD CENTER • EASTPORT PLAZA • OREGON CITY  
• MEDFORD • EUGENE • LONGVIEW • VANCOUVER MALL

Gallenkamp Shoes—One of the Companies of SCOA Industries Inc