



Views of impressive coastal seascapes are offered from Ecola State Park. Sheltered Indian Beach, shown here, is a favorite for swimmers

and surfers.

The 'air conditioned' Oregon Coast

A Nehalem Indian legend tells of a Black man who came to the Oregon Coast on a Spanish treasure ship.

One version of the story says that the natives were hunting beside Neahkahnne Mountain one morning when they saw large quantities of a strange substance on the beach. Then they found the wreck of a great canoe with sails that were torn and flapping in the wind.

Strange objects were strewn on the beach, but still stranger were the thirty men who

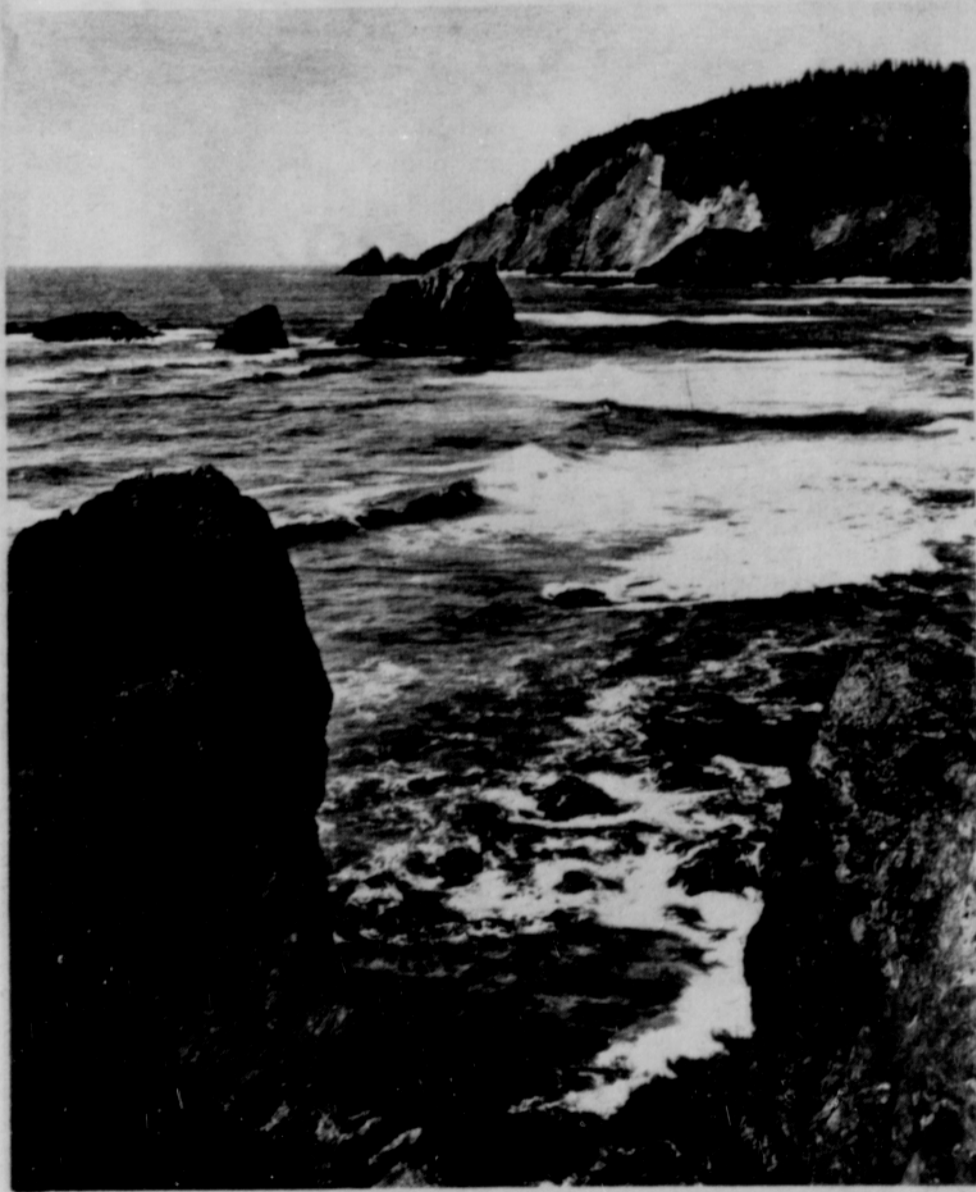
clung to the wreck. Their faces were white, their clothes strange, and their language bewildering. The Indians finally learned through sign language that the men had come across the ocean and the ship had been wrecked during the night by a storm.

Before the ship was destroyed, the men carried a heavy box ashore and buried it far up on the side of the mountain. The sailors knew the Indians were superstitious about death, so they killed one of their crew, a Black man, and buried him with the treasure.

There are conflicting stories about what happened to the crew. Some say all were lost attempting to save the ship; others say four men took a trail north toward the Columbia River and were never seen again, the remaining twenty-six staying with the Indians and eventually fighting and killing each other.

On the lower slope of the mountain, a stone was found which has strange markings and is regarded as a clue to the site of the treasure. The rock weighs about a ton. On its surface is a W (or an M) with a cross on each side, the letters DE followed by eight dots, and an arrow pointing to the mountain. Nearby, a smaller rock has an arrow and two dots, the arrow pointing to the larger rock.

The beeswax found in this vicinity may have come from the Manilla Gallion -- Spanish ships that sailed once a year from Manilla to the west coast of Mexico, laden with silks and goods from Asia, including beeswax. These ships travelled north with the Japanese current, then sailed south along the coast of Mexico. The first voyage was in 1566 and they continued for 250 years.



Tillamook Head pushes out into the Pacific Ocean just north of Ecola State Park and Cannon Beach. Located in Clatsop County, Tillamook Head is just south of Seaside on Highway 101. Ecola State Park is known for the many miles of trails that lace its 1,100 acres. The massive rock formations that rise from the ocean and border seven-mile-long Cannon Beach provide a visual beauty and natural homes for a vast assortment of marine life.



**NAACP DELEGATES
WELCOME TO PORTLAND**

FROM

The Blitz-Weinhard Brewing Company
1133 W. Burnside Street
Portland