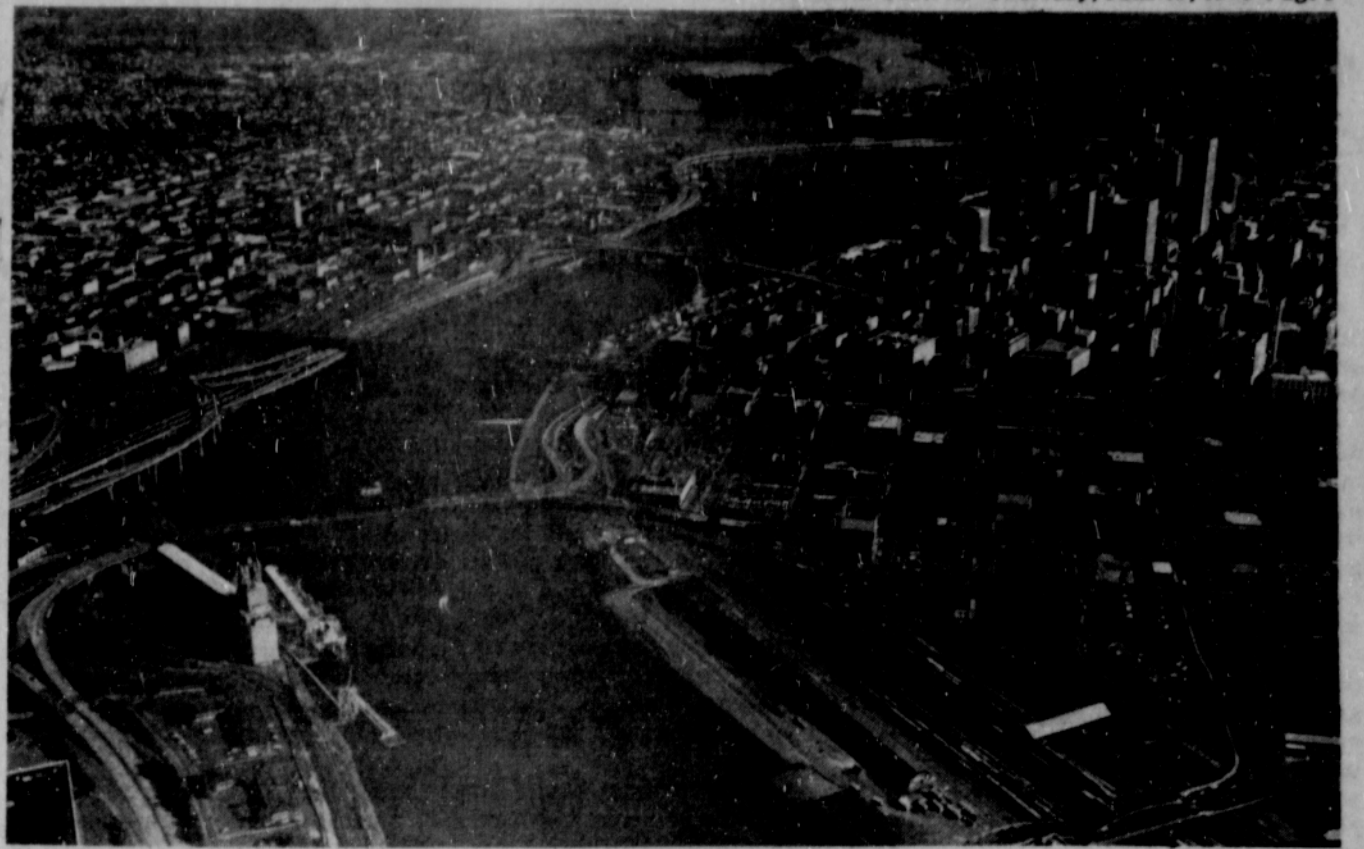




Al Williams of the *Observer* staff, enjoys the view of the Columbia River from the Goodyear blimp.



(Photos: Dan Long)

Community Calendar

The **Albina Youth Opportunity School**, in its 12th year of continuous operation, will offer two full semesters of fully accredited courses for 5th-12th grade students. Emphasis is on small classes and basic studies make-up, with classes in Math, English, Social Studies and Developmental Reading. Hours will be 8:30-12:00 Mondays through Fridays beginning June 26th. High School students may earn up to one full credit, which is transferrable to public school and will be counted towards graduation. There's no charge for the classes (Portland Public Schools charge \$45 for elementary and \$65 for high school summer classes). Interested parties should call the school (288-5813) and enroll prior to June 15th, as space is limited.

A one-day workshop on "Serving the Older Disabled Person" will be sponsored by Portland State University's Institute on Aging, June 22nd, at Memorial Coliseum (1401 N. Wheeler) 9:00 a.m. to 4:30 p.m. Keynote speaker will be **Arthur S. Flemming**, chairman of the U.S. Commission on Civil Rights. He will discuss "The Impact of Age Discrimination on the Older Disabled Person: Issues, Policy and Programs," including findings from a major study completed recently by the Commission. Flemming is former U.S. commissioner on aging, and former secretary of Health, Education and Welfare.

The NAACP, Portland Branch, will hold its monthly meeting on Sunday, June 18th at 4:00 p.m. at the Church of God in Christ, N.E. Beach and 10th Avenue.

Programs of the National Convention will be available. Advance registration begins July 1st.

Harry Ward will give a presentation on the Community Coalition for School Integration and delegates to the National Convention will be elected.

Come Today and Save

SMITH'S

GE Super Values



AUTOMATIC RANGE with WINDOW OVEN

Beautiful simulated wood-grained control panel. Removable oven door with window. Two 8" Calrod surface units. Clock, automatic oven timer and signal buzzer. Plug-in surface units. Infinite heat surface unit controls.

\$288
with trade

Stock No. 10-201

ECONOMY RANGE

Don't miss this large capacity oven value! Designed with you in mind and features: infinite heat surface unit controls, tilt-lock Calrod surface units, recessed cooktop with no-drip edge and large storage drawer below.

\$188
with trade



Stock No. 10-193

TRADE-INS WELCOME

EASY TERMS

we give you more . . .

SMITH'S
home furnishings

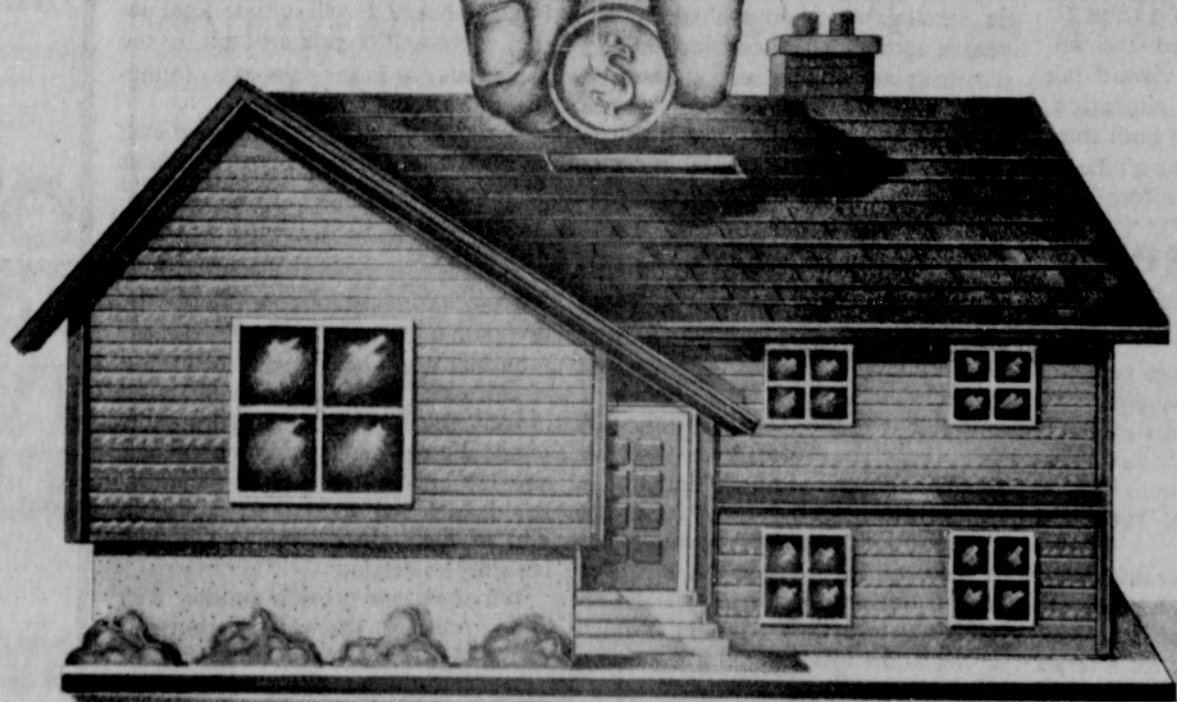
30th and S.E. Division

234-9351

Shop 9 to 9 Tuesday thru Friday
(Not Open Sunday or Monday)

Saturday 9 to 6

The all new Energy Saver Home: A money-saving idea you can bank on.



A house that operates with energy efficiency can save you a lot of money. But when you're looking for a new home, how do you know it has the right combination of features to provide the greatest possible energy saving benefits?

With the criteria we've developed for the Pacific Power Energy Saver Home, that's no longer a problem. When you purchase one of these new houses you'll know the builder has installed the right amount of insulation, double glass, a heating system that isn't oversized, plus dozens of other features designed to save energy and money.

Your local Pacific Power office will be happy to supply you with the names of builders who are now offering these

new homes. So if you're looking for a house with a built-in energy conscience, take a look at one of these.



Every window in the new Energy Saver Home has double glass.



Extra thick insulation installed in the ceiling, walls and floors far exceeds that being installed in most homes.



All doors are fully weatherstripped and all windows caulked, adding extra protection against the elements.



energy saver home

Another idea you can bank on from The People at Pacific Power.