

# 'Message from our Roots'

For the past several weeks members of the Committee on African and Afro-American Art and Culture have been busy making arrangements to seed five local community representatives to the Second World Festival of Black and African Arts and Culture (FESTAC 77). The festival, which will be held in Lagos, Nigeria, is scheduled to begin on January 15th and will be attended by official delegations from around the world. Although it is too late for the Portland group to take part in the month long even as official participants selected by the North American Zone, they look forward to being actively involved in many aspects of the Festival, primarily as observers.

12:00 noon, January 10, 1977, will be the beginning of a long sought after adventure for two of the five Portlanders planning to attend the festival. For O.B. Hill and Joe McHenry, this will be the culmination of for long years of hopes and dreams come true.

In 1973, while members of Portland State University's Black Cultural Affairs Board, Hill and McHenry were instrumental in bringing several prominent Africans to Portland to participate in Black Cultural Month activities held on the campus and in the Portland community. From these associations was formed a liaison that brought Hill and McHenry into contact with North American Zone Representatives of FESTAC 77, Jeff Donaldson, Arthur Monroe and other national and regional organizers of the festival. With these contacts as a base, a working relationship was formed which will culminate in their departure to the festival on January 10th. However, both Hill and McHenry have been heard to say that this is only the beginning of a communication link that can only help Portland and the Black community.

Currently a free lance artist and administration of justice consultant, O. B. Hill has an extensive background in the arts and humanities. He is also an accomplished singer, musician and painter. As Director of the Albina Expansion Arts Festival and a former member of the Black Cultural Affairs Board at PSU, he

was instrumental in bringing numerous Black artists, entertainers, politicians and others to the city of Portland. The majority of the projects and related community activities in which he has been involved have been educational in nature. They have also stressed the importance of Black participation in American society and the contributions of Black people to world civilization.

Hill contends that "the obstacles one encounters locally and nationally, for that matter, are not conducive to developing Black people with artistic abilities. And since there is a paucity of Black patrons, they may find it easier to pursue more conventional careers. The lack of appreciation for Black contributions in general, and the problems of asserting oneself through Black oriented mediums in a society totally dominated by European values, is more often than not, too much for the Black artisan to endure."

As a resident of Portland since 1970, Joe McHenry has been involved with the arts and the reproduction of imagery in many forms. For two seasons he hosted and produced, "On Being Black in Oregon", a television program that highlighted many aspects of Black Culture and Life from around the world.

McHenry is an accomplished photographer who has had works displayed in Oregon and Arizona and has also taught photography. One of his lingering projects is a synopsis that will combine his poetry and photography in a coordinated complimentary book of his works. He has also organized cultural events on a large scale. From 1972 through 1974, he was chairman of PSU's Black Cultural Affairs Board which hosted cultural events during Black Cultural Month.

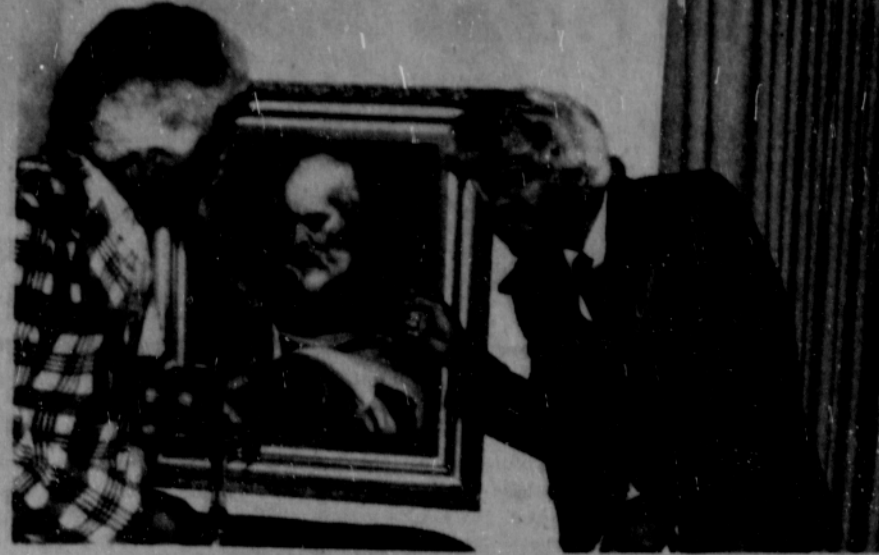
McHenry and Hill will cover their trip to West Africa and the cultural festival for the *Observer*, through their column "Message from Our Roots". The series will begin with first impressions of London.

Also attending FESTAC 77 from Oregon are Udo Okopide, Azzree Lathan and Hazel Warren.



The Albina Ministerial Alliance Day and Night Care Program provided gifts and Christmas stockings for the children it serves. The program provides child care for infants and small children, in private homes.

Above: Eric Grisby, Terry Howell, Shondell Adams, and Anthony Grisby. Left: Rose Kelsaw, day care provider; Sue Carey, Child Care Coordinator; DeNorval and Miracle Ramsey (center row) and Anthony Ramsey and Terry Britt (front row).



AL JAMISON AND GENE HOLMES

## Locally written play featured

Star Productions will present the debut of "The Other Side of the Coin", by Pamela Davis. This play centers around Grandfather, a man in his seventies, who has retreated into his inner shell and withdrawn from the outside world. Living alone in his small apartment he is visited by family and friends who love him and are concerned for his welfare.

This imaginative and human play urges the audience, along with Grandfather, to look at and consider "The Other Side of the Coin."

Stars are: Estena Simms, Sandra Kodjiah Love, Gene Holmes, Al Jamison, Steve Jones, Debbie Shannon, Angie M. Richardson and Michelle DePass.

Early in 1976, Forrest Jenkins, founder and director of the Star Production Company, saw the need for interplay between different life styles using drama as a medium of communication. The Star Production Company was his answer to that need.

Star Production theatrical company has two active repertory acting groups. One group performs plays and provides entertainment with and for senior cit-

zens. All of their performances are open to the public and senior citizens and the handicapped are encouraged to participate.

The other group performs plays for the general public. Each group's presentations have the scope of drama, musicals, dance, mime and poetry symposiums. Both are open to new members.

The production will be shown at Portland Community College Cascade Auditorium, 705 N. Killingsworth from January 21st to February 6th. For information or assistance with transportation call 288-0560.

Ladies 21-35 want to meet men for dating. Call Andrea. 232-4635



## Community Calendar

New evidence of conspiracy in the assassinations of John Kennedy and Martin Luther King, Jr. will be presented by the Northwest Assassination Research group on Friday 7:00 p.m. and Sunday, 4:00 pm at the American Friends Service Committee office, 4312 S.E. Stark Street. The group will discuss Coup d'etat in America by Michael Canfield and Alan J. Weverman. The book is currently banned in the US by court order because of a suit filed by the US Government. The suit charges CIA involvement.

Betty Hodges, Librarian of the Albina Branch of the Multnomah County Library, has scheduled a series of Pre-School Story Times for children ages 3 - 5 on Saturdays, January 15 through February 26 at 11:00 a.m. The Albina Branch is located at 3630 N. Vancouver Avenue. Please call 287-7147 for additional information.

Humboldt Neighborhood Improvement Organization, Humboldt School, 4915 N. Gantenbein, January 10 at 7:30 pm. Marion Scott - guest speaker.

Kerns Neighborhood Association, Monroe High School, January 10th, 7:30 pm - Fear in the neighborhood (crime).

Northeast Coalition, King Neighborhood Facility, 4815 N.E. 7th, January 11th, 7:30 pm. Guest speaker - Gary Stout. City of Portland Planning.

Eliot Neighborhood Development Association, 2416 N. Williams, January 12th, 7:30 pm.

Planning Commission, hearing on proposed Arterial Streets Policies. January 11th, 7:30 pm, City Hall.

Women and the Law, short course at Reed College each Saturday morning 9:00 to noon, January 8th through January 22nd. No charge.

Symposium - Crisis in Southern Africa - Reed College, January 17th, 9:30 - 5:00 pm.

9:30 - 10:30 am - slide presentation

10:45 - 12 noon - Elaine Windrich, former advisor on Africa to British Labour Party - "Resolving the Rhodesian Conflict."

1:30 - 3:30 - Edison Zvobgo, Zimbabwean law professor at Lewis & Clark College - "The Liberation Struggle in Zimbabwe in Historical Perspective."

6:30 pm - film "The Last Grave at Dimbaza"

Speech Arts Festival - high school drama and speech competition. January 13-15, University of Portland.

Kay Toran, manager of the Albina Branch, Public Welfare, is guest on "People Perspective", January 14th, 7:00 pm, KBPS (1450 am).

## OBITUARY

### Mrs. Willie Logan

Funeral Service for Mrs. Willie Campbell Logan was held December 29, 1976 at Vann's Chapel. Mrs. Campbell was born December 24, 1883 in Kemper County, Mississippi. She passed away December 24, 1976 in Portland, Oregon. She had been a resident of Portland since 1920. She was a member of Shiloh Baptist Church in Montavilla, where she taught Sunday School for twenty years. She was active in community affairs until her health failed her. Mrs. Logan is survived by two nieces, Mrs. Katy Bell Moore and Mrs. Bessie Bagley; and two nephews, Willie Grace and Edward Peterson.

Bishop H.B. Daniels was the officiating minister. Interment was in Greenwood Hill Cemetery.

### Zelma Adair

Funeral service for Zelma Ree Adair will be at 9:30 AM Saturday January 8, 1977, at Allen Temple CME Church, Reverend T.L. Strayhand Officiating.

Mrs. Adair was born October 5, 1908 in Menasha, Arkansas. She moved to Portland from Birmingham, Alabama in 1942. She and her husband, Appelton C. Adair, celebrated their Golden wedding anniversary in 1973.

Mrs. Adair was employed as a teacher's Aide at Boise Elementary School for ten years. She was a faithful member of Allen Temple CME Church for 27 years, holding many different positions in the church including: Stewardess of Board #1, member of the Board of Christian Education, on the Local, District, and Annual Conference level; Secretary and President of the Alaska Pacific Annual Conference Stewardess Board; Treasurer of the Church's Sunday School Depart-

ment; local and district office in the Woman's Missionary Society; coordinator of Social Activities of the Church.

Mrs. Adair represented her church NAACP Mother Of The Year. She was a member of the Fleur de Lis Social Club.

She passed away January 3, 1977. Survivors include her husband, Appelton C. Adair; her mother, Mrs. Inner Bell Dawson; two daughters - Bessie Anfield and Mildred Wims; 6 grandchildren - Billy Anfield, Kenneth Adair, Donald Adair, Elise Anfield, Alice Anfield and Donna Anfield, all of Portland; one sister, Leola Harper of West Memphis, Arkansas; five great grandchildren and many other relatives and friends.

Vann's Mortuary is in charge of funeral services.

A clean, well-kept home shows a home that has had good care and has been properly maintained. Repaint the interior if it needs it, but use neutral colors, if possible. An attractive, comfortable living room is a major attraction, but a sparkling kitchen will appeal to the lady of the house. It's the heart of any home, so keep it spotless. No dirty dishes. Women are also sensitive about bathrooms; keep them clean and orderly.

Bedrooms are important - arrange their furnishings neatly. Shiny, clean windows not only are a great asset, but let sunlight in and brighten the entire atmosphere. Clean out the clutter in the closets, basement, and garage. And, if you have pets, clear them out too when showing.

### NEWS NOTE

J. V. and Nancy Kimmons celebrated their 15th Anniversary on January 5th. Contratulations!

Advertisement for Neil Kelly Company, featuring 'The Kelly Twins' and services for residential-commercial remodeling. Includes contact information for Portland, Oregon.

Advertisement for Dr. Bernard Dentist, offering prompt dental repairs. Includes a 'Caution' section about dental emergencies and contact information for Portland and Eugene.

## There are more than 70 convenient pay stations where PGE customers can pay their bills . . .

Most of our customers prefer to pay their bills by mail, but many like the convenience of paying in person at convenient neighborhood locations or at their nearest PGE office. For those of you who prefer to pay in person, the list of authorized stations listed below will help you locate the one most convenient to you. We will be adding others from time to time — as the need exists.

- Portland Division: 2803 E. Burnside St., 4610 S.E. Belmont St., 5939 S.E. Belmont St., 6828 S.E. Foster Rd., 9230 S.E. Foster Rd., 9202 S.E. Foster Rd., 2230 S.E. Hawthorne Blvd., 10888 S.E. Main St., 1101 Main St., 14888 S.E. McLoughlin Blvd., 3370 S.E. Milwaukie Ave., 7370 S.E. Milwaukie Ave., 2210 S.E. Oak Grove Blvd., 3830 S.E. Powell Blvd., 18342 S.E. River Rd., 7937 S.E. Stark St., 7000 S.E. Thuesen Rd., 4506 S.E. Woodstock Blvd., 10317 S.E. 82nd Ave., 10413 S.E. 82nd Ave.
- North: 4800 N. Lombard St., 8438 N. Lombard St.
- Southwest: 8200 S.W. Barbur Blvd., 407 S.W. Broadway St., 7834 S.W. Capitol Hwy.
- Lake Grove: Lake Grove
- Lake Oswego: 402 N. State St.
- Willamette Valley Division: 301 Church St. N.E., 2715 Commercial St. S.E., 5024 River Rd. N.
- Sheridan District: 514 Trade St., Amity, Oregon
- Woodburn District: 2225 Country Club Rd.
- Western Division: 18480 S.W. Tualatin Valley Hwy., 18605 S.W. Tualatin Valley Hwy., 7405 S.W. Garden Home Rd.
- Newberg District: 304 Ferry St., Dayton, Oregon
- St. Helens District: 220 Railroad St., Sherwood, Oregon
- Gresham Division: 19920 S.E. Hwy. 212, Boring; Estacada, Oregon; 301 S.W. Broadway, Estacada; 16030 S.E. Stark St.; 12-Mile Corner
- Sandy District: Sandy, Oregon
- Oregon City Division: Molalla, Oregon; Canby, Oregon

PLEASE NOTE: As of January 1, 1977, First National Bank branches will no longer serve as PGE paystations. If you need additional information, please call your nearest PGE office and ask for Customer Service.

- Portland Division: GRAND & MORRISON BRANCH, 524 S.E. MORRISON ST., EASTGATE BRANCH, 10540 S.E. STARK ST., LLOYD CENTER BRANCH, 527 N.E. MULTNOMAH ST., MIDLAND BRANCH, 510 S.E. 122ND AVE., EASTSIDE BRANCH, 2021 N.E. SANDY BLVD., PARKROSE BRANCH, 10120 N.E. SANDY BLVD., UPTOWN BRANCH, 221 N.W. 21st AVE., ST. JOHNS BRANCH, 7410 N. CHICAGO AVE., HEAD OFFICE, 319 S.W. WASHINGTON ST.
- NINTH & WASHINGTON BRANCH, 820 S.W. WASHINGTON ST., SECURITY BRANCH, 330 S.W. 9th AVE., STANDARD PLAZA BRANCH, 1100 S.W. 9th AVE., OTHER OREGON PAY STATIONS, LAKE GROVE BRANCH, 16209 S.W. BRYANT ROAD, CITIZENS BRANCH, 400 S.W. 4th ST., LAKE OSWEGO
- VALLEY PLAZA BRANCH, 9450 S.W. BEAVERTON HILLSDALE HWY., BEAVERTON, HILLSBORO BRANCH, 980 S.E. OAK, BEAVERTON BRANCH, 3215 S.W. CEDAR HILLS BLVD., TIGARD BRANCH, 11999 S.W. PACIFIC HWY., WILSONVILLE BRANCH, 29930 S.W. PARKWAY, GRESHAM BRANCH, 1500 N.E. DIVISION ST., TROUTDALE BRANCH, 141 S.E. DORA, OREGON CITY BRANCH, 615 HIGH ST., MILWAUKIE BRANCH, 10501 S.E. MAIN ST.