

John McGovern, Vice-President of Nabisco, Inc., presented a \$1,000 award to Reverend Jessie L. Jackson, (left), director of the People United to Save Humanity Foundation, (PUSH), during the annual PUSH convention. Reverend Jackson, 34, head of the Chicago-based Operation PUSH, is molding a "push for excellence" crusade in the schools through the PUSH foundation and cooperation of educational institutions, businesses and private industry. Bishop H. H. Brookins, Chairman of the Board for PUSH looks on at right.

PSU professor studies race, sex caucus impact

Dr. Wilson Record, Professor of Sociology, Portland State University, has been awarded by the National Science Foundation a fellowship of \$45,000.00 for a two-year study of the impact of race and sex caucuses on academic professional associations in the social sciences.

The study, which will begin on September 1st, calls for extensive review of a wide range of relevant documents from both association and caucus sources and for interviews in depth with the principal figures in both types of organizations. The associations selected for intensive examination are the American Political Science Association, the American Psychological Association, and the American Sociological Association.

"The sex and race caucuses in these and other social science associations," Record said, "have had a varied but significant impact on their admission of Blacks and women and on the way members of these two groups have been portrayed in the literature of the several fields. White male dominance, which rested primarily on prejudice and discrimination, has been shaken. It is this change and its several causes on which the research will focus."

Record, who has been associated with the University for more than a decade, teaches courses in race and ethnic relations. He has held numerous other research grants, including those from Russell Sage Foundation, Metropolitan Applied Research Center, American



DR. RECORD

Philosophical Society, the Volker Fund, The Calmerston Fund, and the Ford Foundation as well as the Rosenwald Fund. He is the author of five books, eighty-five professional articles, and more than a hundred book reviews in professional journals - most of them concerned with race and ethnic relations in the United States.

Record's wife, Dr. Jane Cassels Record, is Senior Economist and Director of Manpower Studies for the Kaiser Health Research Foundation and the author of many articles and monographs dealing with medical manpower and medical costs. The two have collaborated on a

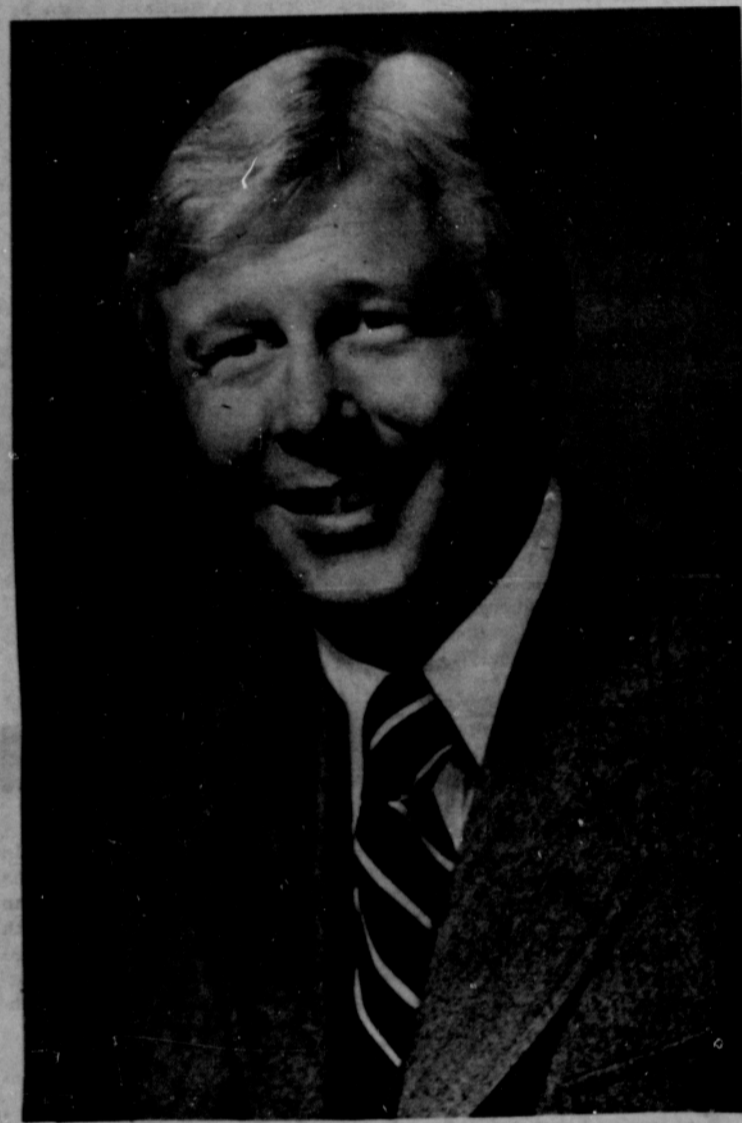
number of articles and on a book, *Little Rock: USA*, a study of the school integration crisis in Arkansas in 1957. They live at 2397 Hillside Lane in Lake Oswego. A son, Jeffrey Record, who holds the Ph.D. from Johns Hopkins University, is presently Staff Director for the Senate Armed Services Committee.

Record said that he expects the study to be published in book form. "I hope," he concluded, "that it will be not only a solid, scholarly work but also a significant force in drastically reducing the discrimination against women and Blacks that is found so abundantly in the halls of academe."

Kids need foster home

Dell, 10, and Mary, 14, are two mildly retarded children who are in need of a foster home. Because of family problems, their mother is no longer able to cope with these two active children. They both like animals and enjoy riding their bicycles.

If your family is interested in meeting the challenge and enjoying the satisfaction of helping children like Dell and Mary please call the Children's Services Division at 238-8481.



JOHN WESTLEY

Westley directs planning

Metropolitan Hospitals, Inc., has announced the appointment of John L. Westley to director of planning. Prior to the appointment, Westley served as director of public affairs for Emanuel Hospital.

Metropolitan Hospitals, Inc., is composed of Emanuel, Gresham Community, Meridian Park and Physicians and Surgeons hospitals. As director of planning, Westley will be responsible for organizing and directing the general planning and government affairs program for Metro. He will assist in charting the proper course of action in the planning and development of services offered by the organization. Additionally, he will serve as the key liaison person for the four Metro hospitals with the local health systems agency and will be the main contact person with the State Department of Health Planning staff and with the State Health Commission.

He will continue to represent Emanuel Hospital as a member of the Eliot Neighborhood Association Board of Directors and as a member of the Model Cities Liaison Committee.

Prior to joining Emanuel in 1973, he was director of institutional health services for the Comprehensive Health Planning Association (CHPA) for the Portland Metropolitan area.

A member of the City Club, Westley has served on a number of committees for the Oregon Association of Hospitals, the Northwest Oregon Council of Hospitals and CHPA. He is active in a number of political activities.

Elections hearings due

The Legislative Task Force on Elections and Voter Registration will conduct a series of public hearings throughout the state during the next two months to investigate possible shortcomings of Oregon's elections laws.

The first hearings, announced by Co-chairpersons Representative Rick Gustafson (D-Portland) and Senator Lenn Hanson (D-Ashland), will be in Portland on August 26th at 7:00 p.m. in room 602 of the Multnomah County Courthouse, and in Eugene on August 27th at 9:00 a.m. in Harris Hall of the Lane County Courthouse. Other public hearings will be in Medford on September 9th, Bend on September 10th, La Grane on September 11th, and Salem in mid-September.

The purpose of the hearings is to learn the sentiment of Oregon residents to the new registration and election laws. The Task Force is seeking to determine if there was any fraudulent voting at the May primary election and the potential for illegal voting in the November general election. Other topics for public opinion are the new registration laws, problems experienced at the polling places at the recent primary, problems with punch card or paper ballots, and reactions to the new format and distribution of the voters pamphlet. In addition to the general citizenry, county clerks are expected to offer recommendations to the Task Force at the hearings.

All persons presenting testimony will be limited to a ten minute statement after which they may be asked questions by the legislators. Written testimony is encouraged.

SAFEWAY SUPER SAVERS MEAN EXTRA SAVINGS!

Don't Be Satisfied With A Few Low-Priced Specials In Big Bold Print. Safeway Offers Hundreds Of Super Savers From Which To Choose & Save!

<p>MD TISSUE Lullaby Soft Regular 88¢ 4-Roll Pack only 59¢</p>	<p>3-LB. COFFEE Edwards Brand Regular \$5.98 3-lb. Can Only \$4.98</p>	<p>CHUNK TUNA Chicken of the Sea Regular 72¢ ea. 6 1/2-oz. Can only 2 for \$1</p>	<p>COLDBROOK Soft Margarine Regular 49¢ 1-lb. Tub only 38¢</p>
--	--	---	--

SAVINGS CHECK!	Our Reg. Price	Super Saver Price	YOU SAVE
Coronet White Facial Tissues 200 ct.	58¢	49¢	9¢
Lemonade 12-oz. Can	43¢	3.51	29¢
Cream Pies 16-oz.	65¢	2.51	30¢
Cherry Pie 16-oz.	93¢	79¢	14¢
Dinners 11-oz. Fried Chicken	58¢	2.51	16¢
B&M Beans 28-oz. Can	88¢	79¢	9¢
Raisin Bread 13-oz. Loaf	58¢	48¢	10¢
Tea Rolls 12-oz. Pkg.	52¢	48¢	4¢
Sour Cream 15-oz. Tub	65¢	49¢	16¢
Gelatin Salad 15-oz. Jar	55¢	48¢	7¢
Drinks 8-oz. Can	81¢	69¢	12¢
Pizzas 13-oz. Size	\$1.12	98¢	14¢
Spaghetti 12-oz. Box	38¢	34¢	4¢

Fresh Ground Beef

Perfect for Delicious Meatloaf... and 'burgers

68¢ lb. Lean Ground Beef n. 98¢

Boneless Top Round

U.S.D.A. Choice Beef Round Famous Safeway Trim for Full Value

\$1.48 lb.

Rump Roast \$1.14
Beef Brisket \$1.28
Chuck Steak \$1.78
Short Ribs \$1.68

HOME CANNING SPECTACULAR

<p>PEACHES Yukima Heals Firm, Ripen 4 \$1 28-oz. Box \$4.98</p>	<p>PLUMS Italian Prune-Plum 5 \$1 28-oz. Box \$4.98</p>	<p>PEARS No. 1 Bartlett's 5 \$1 28-oz. Box \$4.98</p>
---	---	---

<p>Honeydew Melons Large Size Sweet and Tantalizing 88¢</p>	<p>Gravenstein Apples 4 \$1 28 lb. Ctn. \$4.98</p>
---	--

<p>BARKDUST or STEER MANURE Your Choice 88¢</p>	<p>Seedless Grapes .49¢</p>	<p>Sunkist Oranges 5.51</p>	<p>WALLA WALLA SWEETS 7.88¢</p>	<p>New Potatoes 8.51</p>
---	---	---	---	--

BOUNCE FABRIC SOFTENER

The Softener in Your Off-Sheets 25¢ off Label

\$1.98 49-oz. Box of 48

BOLD DETERGENT

Facially Laundry Detergent for White, Bright Washes

\$1.48 49-oz. Pkg.

SPECIAL FEATURE

THIS WEEK DINNER KNIFE

"Normandy" or "York"

STAINLESS STEEL FLATWARE

Start your Set Here! Set Here!

42¢

HOLLOWARE

"Party Set" 12-Pk. \$4.49
& Matching Spoon Set.

PORK STEAK

Lean Pork Shoulder Blade Steak

98¢ lb.

ROUND ROAST

U.S.D.A. Choice Bottom Beef Round, Fully Aged

\$1.28 lb.

Bacon \$2.48
Beef Sausage 3.51
Bologna \$1.88
Dinner Franks 2.51

Fresh Sole Fillets

Ocean Fresh Waste Free Fillets

\$1.48 lb.

FISHBURGERS

South Fish Patties with Great Seasoning

98¢ 12-oz. pkg.

FISHSTICKS

Breaded, Pre-cooked Meat and Sauce with Fresh Fish

.78¢ lb.

AD PRICES GOOD THROUGH TUESDAY, AUGUST 31ST, 1976

<p>SAFEGWAY COLOR PRINT FILM 20-EXP. \$3.69 12-EXP. \$2.39</p>	<p>SAFEGWAY FILLER PAPER 8 1/2" x 11" 200 Sheets 66¢</p>
---	--

