



President Ford greets Norvelle Maddox of Detroit, Michigan at a White House ceremony honoring older Americans who have served as Foster Grandparents for ten years.

## Ford honors Foster Grandparent

The ornate chandeliers in the White House State Dining Room sparkled. The handsome room was ablaze with light. Major network TV cameras focused on the President of the United States and his attentive audience.

"A very popular song tells what the world needs is love, sweet love," President Ford began. "I can't think of any other federal program. And I congratulate all of you for being a very vital part of it," he told the twenty older Americans assembled to be recognized by the President for ten years of volunteer service as Foster Grandparents.

"I wish to personally congratulate the twenty of you who are here. You are among the 178 persons to have served the full ten years since the Foster Grandparent Program began," the President continued.

As he reached forward to clasp the hand of Foster Grandparent Dolores Herrera of San Antonio, Texas, the tiny lady exclaimed in a strong clear voice, "God bless you!"

### Sale benefits children

A rummage sale will be held on October 25th and 26th to benefit the Oregon Association for Children with Learning Disabilities at Portland State University. The program is opening a new office at the King Neighborhood Facility to work with children of the Northeast area.

The sale will be held at the Student Union building, Cascade Center, from 9:00 a.m. to 5:00 p.m. Items may be donated for sale by calling 229-4439.

## Kirigin

(Continued from p. 1 col. 6)

The three stayed in show business for about eight years, playing at such famous places as the Paramount Theater, Loew's Paradise, the Roxy in New York City; the Metropolitan in Boston, The Hippodrome in Toronto; the Fox in Philadelphia, etc. They played with such stars as: Edgar Bergen, the O'Connors (Donald's family); Dizzy Dean; Ira Ray Hutton's band; Duke Ellington; the Frazer sisters; and opera singer Jan Pierce.

In 1940, the act broke up. One of the members had been married and show business was in a decline so bookings became harder to get. Kirigin stayed in New York for a while to be "understander" for "The Great Magyar Truppe" with the Ringling Brothers Circus.

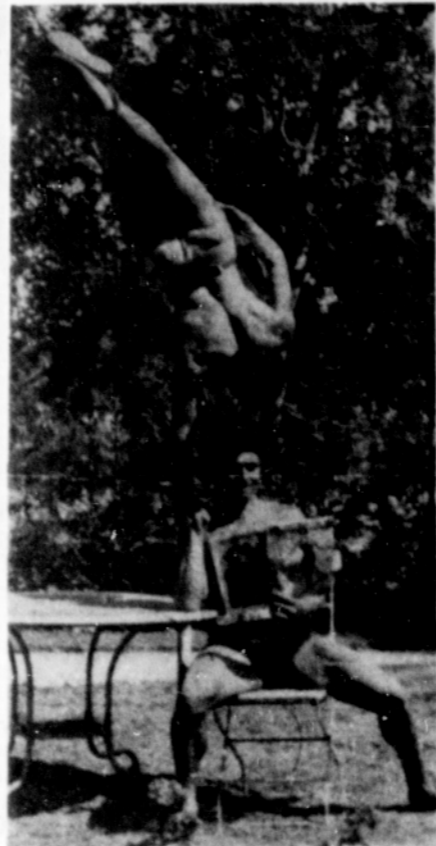
About this time Kirigin became interested in weight lifting and trained with Siegmund Klein. He became known as "Jimmy Muscles" and appeared on the cover of "Strength and Health", which in itself was a record because this was the first time he was photographed in muscular poses.

Kirigin returned to Portland in 1940, attended Benson High School where he learned machinist work, and then worked for Columbia Aircraft. He then was stationed in Missouri in the Air Force, where he met his wife, Norma Werle. Miss Werle had sung with the St. Louis Metropolitan opera, had toured with Ben Feld's orchestra, and had sung to the accompaniment of Alec Templeton. Their daughter, Marilyn, won Junior Rose Festival Queen in 1954.

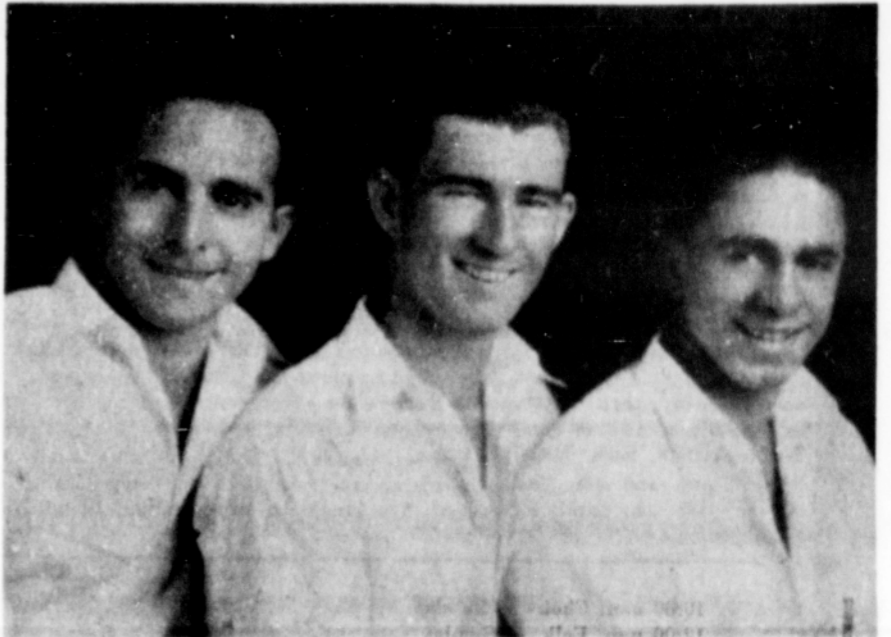
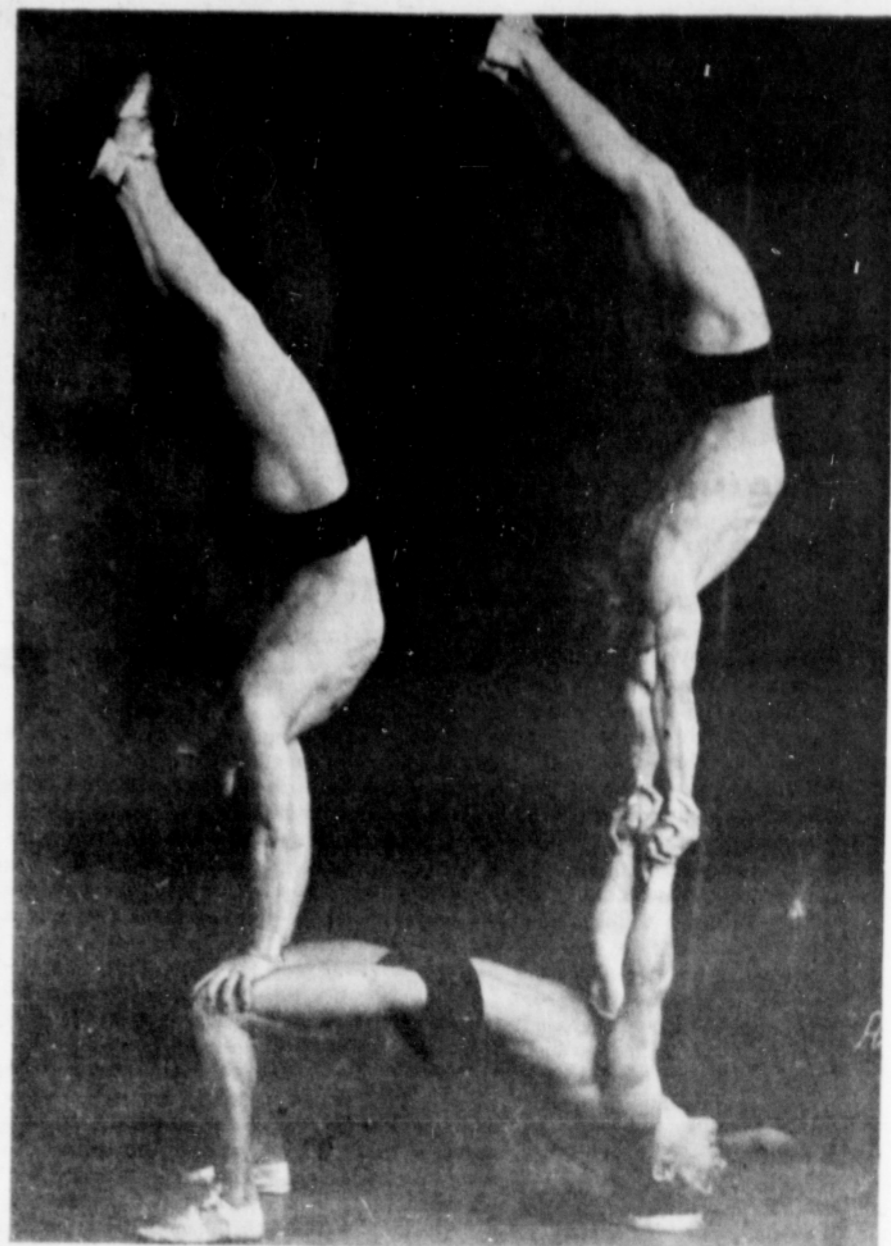
An inventor, Kirigin holds two patents, one on a camera lighting system.

In 1946 he returned to Portland, was employed by the Builder's Exchange Building, Service Hardware, and in 1965 went to the U.S. Postal Service.

Kirigin looks on his eight years in show business as an exciting as well as an educational experience. He travelled across the country, had many experiences, and met many prominent people.



Frank F. Kirigin . . . today. [upper left] "Jimmy Jackson" holds a friend. [lower left] Kirigin on the bottom, holding Waddell and Smith. [top right] Kirigin, Waddell and Smith.



Her enthusiasm was shared by each of the Foster Grandparents, who viewed their visit to the White House as the highlight of the first nationwide Foster Grandparent Program (FGP) conference. The three-day conference held earlier this month in Washington was sponsored by ACTION, the federal volunteer service agency which administers the program.

Foster Grandparents are low-income persons sixty years or older who care for children with special needs in institutions for the mentally retarded and physically handicapped, day care centers, homes for the neglected or dependent and correctional facilities.

More than 13,600 older men and women serve at 500 institutions in all fifty states, Puerto Rico, the Virgin Islands and the District of Columbia. Foster Grandparents serve four hours a day, spending two hours with each of two children, five days a week. For their service, they receive a small stipend, transportation and a free meal daily.

## YOUR STATE UNEMPLOYMENT

**Question:** How long can an Unemployment Insurance claimant be disqualified from receiving benefits if he willfully makes a false statement in his claim in order to get benefits?

**Answer:** Oregon Employment Division law states: "An individual is disqualified for benefits for a period not to exceed twenty-six weeks whenever the administrator (of the Employment Division) finds that the claimant has willfully made a false statement or misrepresentation, or willfully failed to report a material fact to obtain any benefits under this chapter (of the law). The length of such period of disqualification and the time when such period begins shall be determined by the administrator in his discretion, according to the circumstances in each case. The administrator may cancel such disqualification wholly or in part as he deems proper and equitable."

**Question:** What are the main functions of the Oregon Employment

Division's Research and Statistics section?

**Answer:** The Employment Division's Research and Statistics section provides Statistical and economic information to the Manpower Administration, the Bureau of Labor Statistics, other State and Local governmental agencies, Labor, management, private industries, and other sections of the Employment Division. Types of services and information include: (1) Labor Market Information - current and historical data on labor force, employment, weekly hours, hourly earnings and labor turnover for the State and various labor market areas within the State by industry. This information provides the basis for the U.S. Department of Labor area classifications according to shortages and surpluses of labor and is used extensively in area socio-economic planning. (2) Special Manpower and Occupational Information - periodic reports for the State and selected labor

marked areas in the State which include current and projected employment by industry and occupational groups, and replacement needs.

(3) Statistical Reports and Validation - A multitude of reports and analysis covering all phases of the operations of the Job Service programs and the Unemployment Insurance programs of the Employment Division. (4) Other reports included in this area are all the special studies or analyses dealing with specific aspects of the Employment Security program. This may consist of reports concerned with actuarial reviews of the unemployment insurance program, employer tax and experience rating studies, analysis of the effects of proposed changes in the Employment Division Law, special claimant and covered worker surveys, analysis of services to employers or job applicants, improved methods of obtaining occupational and manpower needs, and filling a wide variety of requests for manpower data.

## Classes assist business

The Small Business Administration, the Portland Chamber of Commerce, and Mt. Hood Community College are co-sponsoring classes for small businessmen this Fall.

A series of Success Clinics, ideal for the small businessman wishing to brush up his management skills, will run from October 7th to November 25th; 7:00 to 9:00 p.m. A different topic will be discussed each evening by a different instructor. Subjects are: Success and Failure Factors, Marketing, Taxation, Credit and Collections, Personnel Management, Bookkeeping, Money Management, and Business Law.

Another course, Small Business Bookkeeping, will cover the basic requirements necessary to set-up and maintain a simple useful bookkeeping

system for a small business. The course, taught by Ron McCallister and Gary Goertsen, will run for eight weeks October 14th thru December 2nd; 7:00 to 10:00 p.m.

On October 15th, a Beginning Business Workshop will be held from 9:00 a.m. to 4:00 p.m. Experienced management consultants, as well as other professionals, will cover the key areas of concern in planning and setting up a small business. Topics include Success and Failure Factors, Money Management, Recordkeeping, Law, and Marketing. Free SBA publications will be distributed and films will be shown.

For further information contact the Small Business Administration; 221-3441, or Mt. Hood Community College; 666-1561.

**LINOLEUM CITY DECOR CENTER**

**BATH Boutique DEPARTMENT**

**CO-ORDINATED ACCESSORIES**

- TOILET SEATS
- WASTE BASKETS
- TISSUE BOXES
- SOAP DISHES
- TOOTHBRUSH TOTES
- TUMBLERS
- SCALES
- TOWELS
- HAMPERS
- SHOWER CURTAINS

**ADDITIONAL ACCESSORIES**

- PLUSH OR SHAG CARPETS
- BATHROOM HARDWARE
- CABINETS & LIGHTS
- GOLD, SILVER & CERAMIC ACCESSORIES & FIXTURES

**LINOLEUM CITY** 505 N.E. Grand 500 N.E. Union Phone 234-7271 Mon. & Fri. 10:00 P.M.

## SEVEN FREE EVENTS

### FAR WEST FEDERAL SAVINGS

in cooperation with the Portland Community College Community Services Department

**Invites You To Attend**

A series of talks, demonstrations, helpful hints and tastings in the Lombard Community Room—3333 N. Lombard Street

9:30-11:30 AM

- Mon. Oct. 6 Rape Awareness & Prevention
- Mon. Oct. 13 Dried Flowers (how to gather, preserve, arrange and care for)
- Mon. Oct. 20 First Aid (don't panic—you can handle that emergency)
- Mon. Oct. 27 Macrame—it's simple, it's fun
- Mon. Nov. 3 You And Your Car—stay alert and alive!
- Mon. Nov. 10 Holiday Baking (festive goodies for the holidays ahead)

TUESDAY, NOVEMBER 18—7:00-9:00 PM  
Tax Sheltered Savings Plans—Keogh and I.R.A.  
(Individual Retirement Account)

FREE FOR ALL • REFRESHMENTS • BRING YOUR FRIENDS

**FAR WEST FEDERAL SAVINGS**

3333 N. LOMBARD STREET  
283-5246

## AT HOME

by Cal R. Williams

To obtain the best performance from your clothing, learn to read and follow permanent care label. The brief care instructions also are useful in predicting the cost, time and effort that will be required to keep articles of clothing in wearable condition.

The garment manufacturer is responsible for providing information to the consumer on the proper care procedure. The label must be durable enough to endure and remain legible throughout the life of the garment. If piece goods are purchased, it is the responsibility of the seller to provide a permanent care label for each length of fabric purchased. It is then the consumer's responsibility to attach the care label and follow it.

Instructions found on the permanent care labels may include both basic and supplemental information. Instructions are based on the harshest treatment that a garment or fabric can endure as well as any precautions that should be observed. If the permanent care label states that the garment is machine washable, the garment may also be hand washed or drycleaned unless there is a supplemental warning not to do so. However, if the label states that the garment should be hand washed, it should not be washed in a washer. Machine washing is a more vigorous

method of care.

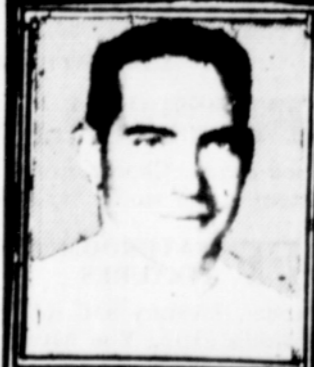
Sometimes instructions include recommended water temperatures. These guidelines should be strictly followed, since many fibers and finishes are sensitive to heat. If the label does not include the water temperature, then hot water, 130 degrees to 150 degrees Fahrenheit (54 degrees to 66 degrees Centigrade), may be used. Warm water should be between 90 and 110 degrees F. (32 to 43 degrees C.). Cold water is less than 75 degrees F. or 25 degrees C.

Instructions regarding the use of bleach may be included. It is assumed that white articles are bleachable unless the label cautions against the use of bleach. It is also assumed that colored clothing should not be bleached. If white clothing contains the caution, "Do Not Bleach," the fabric may be a fiber that reacts with bleach or the fabric may contain a finish that yellows if bleached.

"Wash Garment Separately" may appear on a label. This precaution should be observed, since two types of dye reactions can take place during laundering. Excess dye can come off, staining other clothing in the same wash load, or the dye can be invisibly dissolved in the wash water, then become insoluble and reappear as dinginess on other items of clothing.

## DR. JEFFREY BRADY Says:

"DO Not Put Off Needed Dental Care"  
Enjoy Dental Health Now and Improve Your Appearance



- COME IN AT YOUR CONVENIENCE
- OPEN SATURDAY MORNING
- NO APPOINTMENT NEEDED
- COMPLETE COOPERATION ON ALL DENTAL INSURANCE PLANS
- COMPLETE DENTAL SERVICES

UNION OR COMPANY DENTAL INSURANCE COVERAGE ACCEPTED ON YOUR NEEDED DENTISTRY

Park Free - Any Park n Shop Lot  
HOURS: Weekdays 8:30 a.m. to 3 p.m.  
Sat. 8:30 a.m. to 1 p.m.

**DR. JEFFREY BRADY, DENTIST**

SEMLER BUILDING

S.W. 3rd & Morrison St. Portland, Oregon  
Take Elevator to 2nd Floor 3rd St. Entrance

Phone: 228-7545