

Church provides bail

The General Synod of the United Church of Christ, meeting in St. Louis, voted recently to direct its Executive Council "to provide bail for the Wilmington 9" and directed its Commission for Racial Justice "to maintain an on-going program of organization, training and mobilization in the Wilmington, North Carolina community in cooperation with other agencies of the United Church of Christ."

Delegates to the Synod directed the Executive Council to "borrow up to the amount sufficient to provide bail for the present incarceration", with the interest on the loan being paid from the United Church of Christ priority funds.

The Wilmington 9 is composed of eight Black youths and one white woman who were convicted last year on charges of arson and conspiracy to assault police and firemen. The nine, along with the Reverend Benjamin Chavis, a staff member of the Commission for Racial Justice, were given long sentences and excessively high appeal bails.

Bail for Chavis was set at \$50,000 and bails for the others ranged from \$20,000 to \$45,000. Prison sentences ranged from 10 years for the white woman to 29 years for

Chavis. The United Church of Christ, after being urged by its Commission for Racial Justice, posted the \$50,000 appeal bail bond for Chavis last December. The other nine persons have been in jail for a year, unable to raise the exorbitant bails.

The Commission for Racial Justice sponsored the resolutions calling upon the United Church of Christ to post the bail for the Wilmington 9. The nine are: Mrs. Ann Sheppard, Marvin Patrick, Jerry Jacobs, Connie Tyndall, Willie Vereen, James McKay, Reginald Epps, William Wright and Wayne Moore.

The charges against the Wilmington 9 arose out of racial conflicts in Wilmington in 1971 in which white vigilantes roamed the Black community with shotguns sticking out of car windows.

The Reverend Dr. Charles E. Cobb, Executive Director of the Commission for Racial Justice, praised the decision of the General Synod as "evidence that the church still can be the conscience of this nation, calling it to justice and righteousness in the true spirit of Jesus Christ. This should serve as a reminder for all to see, that this church will not stand by idly while rampant injustice prevails."

Program aids minority students

BOOST, a state and federally funded program to help minority and poor whites complete their educations, is looking for a new group of participants for their GED (high school equivalency) and college admission programs.

Last year BOOST counseled 450 persons and enabled 296 of them to be accepted at the state's colleges, universities and community colleges. Other persons are in GED programs and upon completion will be eligible for college. Now in its third year in Oregon, BOOST provides financial assistance, academic counseling and college admission help for students throughout the state.

"We're trying to identify high school and college dropouts and past high school graduates who wish to re-enter some form of the educational experience," BOOST director Ken Marshall said.

This summer "Street Counselor" Ozie Johnson is combing the Albina area - hangouts and community centers - to find residents who would be interested in getting back into the educational mainstream. In the fall, BOOST counselors will appear at Portland area high schools and high school counselors throughout the state will begin referring potential BOOST students to Marshall.

A special program through the Office of High School Relations, State System of Higher Education, also enables a number of inmates from Oregon Penal Institutions to attend classes through the BOOST program. GED classes are in progress continuously, so BOOST participants may begin anytime and start at whatever level they may be. Due to the "open door" policy at community colleges, many students will be ready for admission to two-year educational institutions by fall or winter term. There are also a few openings left at four-year colleges and universities this fall for students who already have their high school diplomas.

Besides help with counseling, admissions and financial aid, BOOST makes use of the testing center at Portland Community College to help participants discover what abilities and aptitudes they have. Students are then matched with the vocational or academic program at the college best suited for them.

Participants are from the Portland metropolitan area, small towns and farms, and last year 108 were from correctional institutions. About half are women and half are men.

Persons who want to know more about the BOOST program should phone Ken Marshall, director, at 229-4869. The office is located on the Portland State University campus, 1633 S.W. Park, Portland, 97201.



KEN MARSHALL



OZIE JOHNSON

Participants are from the Portland metropolitan area, small towns and farms, and last year 108 were from correctional institutions. About half are women and half are men.

Persons who want to know more about the BOOST program should phone Ken Marshall, director, at 229-4869. The office is located on the Portland State University campus, 1633 S.W. Park, Portland, 97201.

South Africa investment target of Church body

Churches will continue to press American corporations regarding their responsibilities as investors in Southern Africa, says the coordinator for a coalition of church groups that approached U.S. companies during the corporate annual meeting "season" in the late spring.

Tim Smith, director of the Church Project on U.S. Investments in Southern Africa, 1973, said "The churches are committed to a long-term effort challenging U.S. corporations and the U.S. public to face the implications of investing in white minority regimes like South Africa and Angola. One by-product of church and public pressure is that numerous companies have taken a small first step by raising wages for African workers past the starvation level." He said the Southern African issue dominated corporate social responsibility challenges in 1973.

The Church Project operated under the umbrella of the Interfaith Committee on Social Responsibility in Investments, of which Florence Little, treasurer of the United Methodist Women's Division, is chairperson. The Interfaith Committee works on varied issues of corporate social responsibility, of which Southern Africa is one.

Although 17 companies were approached by churches and church agencies in the Church Project, a coalition of seven denominational or ecumenical agencies and one independent group. The total of 17 represents the largest number of corporate challenges by the churches on issues in Southern Africa, revolving largely around apartheid and colonialism. The resolutions were aimed at situations in three countries - South Africa, Angola and Namibia (South West Africa) which is held by South African in defiance of a ruling of the International Court of Justice and a vote of the United Nations.

Groups in the Church Project - who had a combined total of well over 100,000 shares of stock in companies challenged - were the National Council of Churches, the Unitarian Universalist Association, Episcopal Churchmen for South Africa and one or more

agencies of the American Baptist Churches, the United Church of Christ, the United Presbyterian Church in the USA, the Episcopal Church and the United Methodist Church.

The actions were in the form of stockholder resolutions filed with the companies for placement in annual meeting proxy statements and thus on meeting agendas.

In 11 instances, the challenge was the same: The company was asked to make public disclosure about its operations in South Africa, including such information as comparative statistics on numbers of workers, wages paid and compliance with apartheid laws.

In seven cases, negotiations between the church agency asking for disclosure and the company challenged brought agreement. The companies promised to send stockholders information about their South Africa situation, either in a company publication or through another channel. The church agencies then withdrew proxy resolutions they had filed.

The companies willing to make disclosure were Eastman Kodak Co., Texaco, Inc., Burroughs Corp., International Telephone and Telegraph Corp. (ITT), Ford Motor Co., Minnesota Mining and Manufacturing Co. (3M) and Xerox Corp.

In four instances, companies refused to disclose data requested, and the proxy resolutions went to the annual meetings. In all cases - Caterpillar Tractor Co., First National City Bank, General Electric Co. and International Business Machines Corp. (IBM) - the resolutions were defeated by large margins, but church spokespersons said the goal of raising the issues with management, stockholders and the public was achieved.

Besides the disclosure resolutions, a variety of other challenges were filed as proxy resolutions. One, by the Episcopal Church asking Phillips Petroleum Co. not to start operations in Namibia, garnered a comparatively strong 4.5 percent favorable vote. The same resolution was presented by a United Church of Christ agency to Continental Oil Co. and gained

over 5 percent.

Another Church Project member, the Unitarian Universalist Association, requested Exxon Corp. to establish a special committee to investigate the implications of a proposed investment in Angola's off-shore oil fields. Also addressing the issue in that meeting were statements from the president of the Oil, Chemical and Atomic Workers union and a representative of the Organization of African Unity.

The United Church Board of World Ministries filed resolutions with Newmont Mining Co. and Mobil Oil Corp. asking equal opportunity and treatment in such areas as wages for all the companies' workers in South Africa.

Episcopal Churchmen for South Africa challenged American Metal Climax (AMAX) and Newmont to withdraw from Namibia. Support was given by the president of the South-West African Peoples Organization, an African movement working for the Independence of Namibia.

Gymnastics program begins

Summer gymnastics for boys ages five through post high school will begin the week of July 23 at Portland Community College, Sylvania, 12000 SW 49th. The five-week sessions will be taught by Ray Kreps, PSU student who will graduate with a degree in physical education this winter. Kreps is a member of the PSU gymnastics team and a former member of the PCC and Wilson High School teams.

Each class is limited to 20 students and will be divided by age groups, meeting from two to three hours weekly. Students may register at the first class session. Tuition will be 50 cents per hour payable in advance. For a complete schedule of class times and locations contact PCC Community Education, 244-6111.



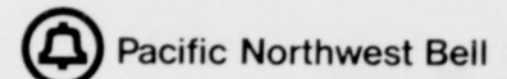
...in time of need

CALDWELLS
COLONIAL MORTUARY

N. E. 14th at Sandy and Burnside
232-4111

Call On Us

the total communications people, for the best communications system in the world - and then some.



Model Cities Child Care Centers are taking applications for summer enrollment. Call . . .

METRO AREA 4-C COUNCIL
POINT OF INFORMATION & REFERRAL

Dr. Bernard DENTIST



SLEEP

DURING
Extractions

USING Sodium Pentothal
WHEN DESIRED
Registered Anesthetist in Attendance

★ **No Appointment Necessary**

IF YOU NEED DENTURES
ASK ABOUT
"Immediate"
DENTURES

DENTURES READY
Name Day • IN MOST CASES Come in before 10 a.m. and
We Will Try to Deliver your Dentures by 4 p.m. Same Day

Note: Dr. Philip Semler
DENTIST
Is Now an Associate on our Staff

Dr. Bernard
DENTIST

515 S.W. 4th Ave. 227-2427
Between Alder & Washington OFFICES ALSO
SALEM & EUGENE

FREE APCOA LOT
Parking 2nd & 3rd. S. W. Morrison

Lynn Kirby Ford

Dear Portland Observer Customer

This offer is limited to customers of the Portland Observer only. From July 12 to July 31 the presentation of this ad is good for the following discount at either of the two Lynn Kirby Ford Locations. These discounts are off of the suggested retail prices, including dealer preparation charges.

\$1300 off of any 1972 or 73 T-Bird in stock.

\$800 off of any 1973 LTD Wagon in stock.

\$700 off of any 1973 Gal500 Country Sedan Wagon in stock.

\$700 off of any 1973 LTD 2dr. in stock.

This offer is only valid with the presentation of this ad, during the time prescribed, with only 1 discount per unit purchased.

Lynn Kirby Ford

TWO LOCATIONS: Northeast Broadway at First • 288-5211
5430 North Lombard • 288-5216

Dear Consumer

Wall to Wall

By Virginia Knauer
Special Assistant to the President
and Director
Office of Consumer Affairs

Compare. I've said it before, and I shall continue urging shoppers to compare price and quality everytime they plan a purchase.

Comparison shopping applies to everything—food, cars, houses and washing machines as well as area rugs and wall-to-wall carpet.

If you are not sure how to compare quality in selecting carpet and rugs, you may want to get a copy of General Services Administration's new consumer information booklet, *Carpet and Rugs*. The booklet covers such points as the following:

• Your needs. How much you are able to spend, what type of use (heavy traffic, decorative, etc.) and size are among the key factors you should know before buying.

• Knowing what materials will best meet your needs. Durability, fastness of color, cleanability, texture and other features all depend upon the materials used in making the carpet and how the carpet is made.

The quality of carpet made with a particular brand of fiber can vary from poor to excellent, depending on how the carpet is made, the density of the fiber and the various characteristics of the fiber. Generally speaking, the greater the density of fiber (whether wool, cotton or some of the many synthetics) packed into an area and firmly anchored, the higher the quality of the carpet.

• Proper installation methods. A good carpet can be hurt or helped by the type of padding material used and by the care used in installation.

• Federal Government regulations. Carpet samples (and the invoice for cut orders of carpet) must inform you of the manufacturer's or distributor's name (or Federal Trade Commission registration number), the country of origin of an imported carpet and the common names of fibers and the percentage of each by weight.

Carpets tested by Federal Housing Administration may have a tag saying it meets FHA's minimum quality standards. However, not all carpet is tested, and manufacturers of some carpet may

decide not to use an FHA tag even though the carpet meets FHA test requirements.

Small carpets and rugs that do not meet the Federal flammability standards must be labeled: "Flammable; Should Not Be Used Near Sources of Ignition or Flammable Furnishings."

In passing on tips, I should add:

1. Be wary of a salesman misusing trade terms to imply good quality. For example, "broadloom" means simply that a carpet was made on a loom six or more feet wide; the term "broadloom" says nothing about quality.

2. Be wary of the "bait-and-switch" routine in which you ask about an advertised low-price carpet and learn it is supposedly sold out or "of such poor quality that you wouldn't want it in your home." Then a salesman may try to pressure you into buying a higher priced carpet of questionable quality.

3. Be wary of a sales pitch that quotes carpet prices in terms of price per square foot, such as "only \$4.95 a square foot." Since carpet usually is sold by the square yard, ask the salesman to give you his price in terms of square yards. That way you can easily compare his price with prices of other goods, which regularly figure the price per square yard.

4. Examine carefully any "brand name" carpet. Fiber manufacturers make fiber for carpet, but they do not make carpet. Some questionable salesmen attempt to capitalize on a well known brand name fiber by suggesting that the fiber company made the carpet itself.

To order the Carpet and Rugs booklet, send a check or money order for 90 cents (payable to Supt. of Documents) to Consumer Product Information, Pueblo, Colo. 81009.

These churches support your paper thru advertisement



Vancouver Ave. First Baptist Church
3138 N. Vancouver Ave.
Phone 282-9496

Sunday School 9:00 A.M.
Morning Worship 11:00 A.M.

Dr. O. B. Williams, Pastor
"The church with a heart-felt welcome"



Bethel African Methodist Episcopal Church
SERVANT CHURCH
TO SECULAR COMMUNITY

A. Lee Henderson, Minister
5828 N.E. 8th 288-5429

Church School 9:45 am
Morning Worship 11:00 am
Wed. Noon - The Hour of Power 12:00 noon
Wed. Prayer & Class Meeting 7:30 pm
Nursery Care Provided

"We are making our Neighborhood A Brotherhood"

WELCOME TO
ST. MARK'S BAPTIST CHURCH

119 N. E. Morris
Sunday Service 9:15/11:00 a.m.
Evening Service 7:30 p.m.
Reverend Edward Wilder

ALLEN TEMPLE CME CHURCH

Corner of 8th and Skidmore
Sunday School 9:30 a.m.
Sunday Worship 11:00 a.m.
Christian Youth Fellowship 6:00 p.m.
(Second and Fourth Sundays)
Reverend Thomas L. Strayhand, Minister

Church and School for Community ST. ANDREW'S CATHOLIC CHURCH

281-4429
Reverend Bertram Griffin Masses: 9:00 a.m. Hymns
806 N.E. Alberta 10:30 a.m. Choir
Portland, Oregon 97211 12:00 p.m. Folk Mass

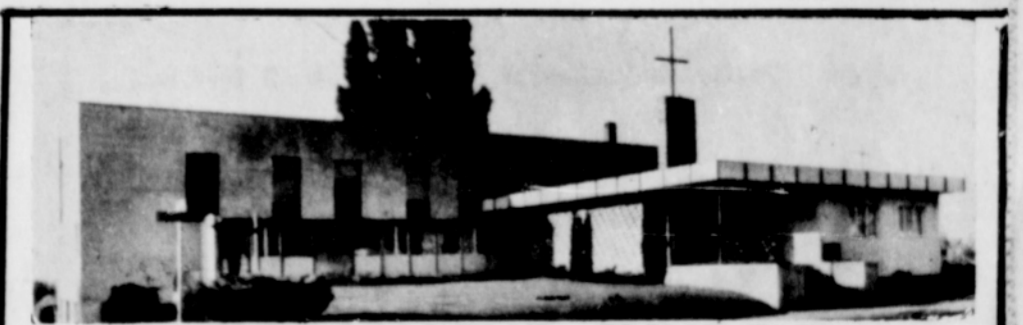
Berean Baptist Church

• 4822 North Vancouver Avenue
• 281-0530 / 284-2334

Sunday: 9:45 a.m. Sunday School
"Where we sing our faith"
11:00 a.m. Morning Worship
6:00 p.m. Young Disciples, Youth Group.
Adult Bible Teacher Training
7:00 p.m. Evening Service
Wednesday 7:30 p.m. Prayer and Bible Study

"... They received the Word... and searched the scriptures daily..."
Acts 17:11

Rev. Willie O. Peterson, Pastor



MARANATHA CHURCH

1222 NE Skidmore Church school and Bible class: 9:15 a.m. 288-7241
Sunday morning worship: 10:45 a.m.
Sunday Evening worship: 7:00 p.m.
Wednesday Evening prayer: 7:00 p.m.
Friday Worship Service: 8:00 p.m.

Bob Harrison - Pastor