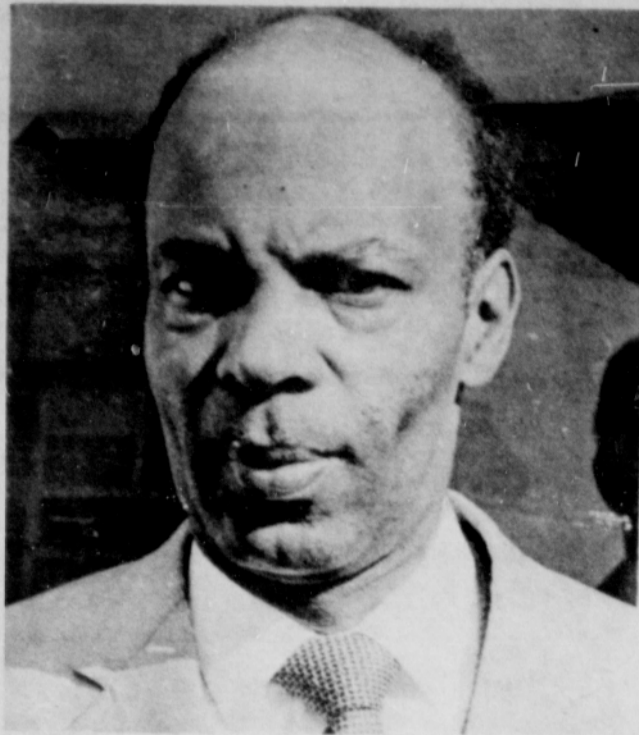


# Kafoury Reports

by Rep. Stephen Kafoury



Mr. McKinley Burt, Jr., author of *Black Inventors of America*, will be the honored guest at the B.E.C. Bookstore, 3705 N. Williams, this Saturday, March 31st. From 1 p.m. to 4 p.m. Mr. Burt will greet the public and autograph copies of his book, *Black Inventors of America*, which documents Black contributions to the industrial awakening of 20th century America. Mr. Burt is presently an instructor at Portland State University and a former business associate of numerous local firms and agencies. The B.E.C. Bookstore welcomes the public to come and meet this talented Black man.

## Health patterns Topic of survey

A comprehensive survey of family health and health patterns, utilizing a questionnaire developed in Portland and adopted for national use by the U.S. Department of Health, Education and Welfare, will begin in Southeast Portland and East Multnomah County this week.

According to Linda A. Kaeser, community development administrator of Community Health Services, the Portland-based sponsoring organization, the survey's questionnaire includes 47 major questions covering all aspects of health conditions and health care in the area.

A total of 2,400 sample households, or about 2 percent of the population, will be questioned by trained interviewers going door-to-door in an area containing roughly half the population of Multnomah County. The area is bounded by the Willamette River on the west, the Sandy River on the east, the Banfield Freeway on the north and the Clackamas County line on the south.

Ms. Kaeser said that CHS has contracted for \$44,997 with HEW to conduct the survey and provide basic health data on Portland for

comparison with other areas of the country. "Results of this survey will also be used by CHS to develop our pre-paid comprehensive health plan, and will provide data to other organizations engaged in health maintenance in the Tri-County area," she said.

Dr. Hugh Tilson, Multnomah County assistant health officer, said this represents one of the few times that a rigorous, comprehensive survey meeting all academic requirements is being undertaken in Multnomah County. "The data will hold real importance in helping County Commissioners with their current policy reassessment of medical care programs," he stated.

The survey is based on a 15-30 minute interview with the housewife and is scheduled for completion within 6 months.

Community Health Services is an Oregon non-profit corporation established to provide comprehensive health care on a pre-paid basis, initially to 25,000 residents of Southeast Portland and East Multnomah County. The corporation will offer a medical, dental and optometric health care package to employer and union groups and individual family subscribers.

Last week the Senate joined the House in demonstrating this Legislature's determination to provide substantial property tax relief.

Following one of the longest debates ever on a single issue, the Senate passed Governor McCall's school finance plan Wednesday. Thursday morning the House deliberated for another two hours before voting to accept the Senate changes, and passed the bills to the Governor for signature.

The final measures differ somewhat from what the House passed in mid-February. But the plan is the same one proposed by Gov-

ernor Tom McCall more than a year ago:

- It relieves homeowners and business property tax payers of the bulk of school finance costs.

- It raises the funds necessary to let school districts operate, and provides an adequate tax base.

- It makes what-you-earn determine what-you-pay.

- It continues local control of schools, and makes school boards more effective by ending the ritual of annual budget politics.

Under this plan, nearly 80 percent of Oregonians will pay less in total taxes. If the adjusted gross income shown on your tax return is less than \$16,000, you will probably pay less in total taxes. If it is more, you will probably pay more. It means middle and low income wage earners will feel real tax relief.

So will small businesses and family farms. New corporate excise tax rates have been made progressive, just like individual rates.

These features in the plan, plus amendments added in the House and Senate, have steadily increased support for the proposal.

## Social worker

(Continued from pg. 1, col. 8)

of Oregon's School of Community Service and Public Affairs since 1970. She currently teaches classes in social policy, community organization and planning.

She is a member of the Lane County Community Coordinated Child Care (4-C's) administrative board, an alternate member of the Lane Community Action Program (L-CAP) board, board member of Highland Community Center in Portland, board member of the University of Oregon Campus YWCA and treasurer of the Eugene Black Women's Association. She is also active in a number of campus activities including being faculty advisor for the University of Oregon Chapter of Sigma Gamma Rho Sorority.

Before coming to Eugene, she taught at the University of Oklahoma's Graduate School of Social Work for four years and before that, was a social worker in Chicago.

During the past decade, she has made periodic trips to the Caribbean Islands and West Africa to do personal research on ethnic concerns and strategies for community development.

Ms. Wright, who is divorced, is a graduate of DePaul University in Chicago and obtained a master's degree in social work from the University of Illinois. She holds an "advanced studies certificate" in social work from Tulane University in New Orleans, Louisiana.

## Observer

(Continued from pg. 1, col. 5)

The suggestion was implemented with the planning of a subscription campaign to be held in the churches during April. Each of the 40 churches whose pastors belong to AMA will appoint a subscription chairman.

AMA is a service-oriented organization of ministers who live or pastor in Albina; Black and White, Catholic and Protestant. Its fifty members represent approximately 40 churches.

Dr. Williams pointed out the need in the Black community for the service rendered by the *Observer*. Black people of Oregon have long needed a vehicle through which we can make our hopes and aspirations, our goals and determination, our pains and frustrations known. The *Observer* has not only provided a means of communication among Blacks, but courageously and consistently speaks to the white community and to its leaders - letting them know what must be done.

Dr. Williams urged that the other Black and Black-oriented organizations, as well as "tuned in" whites, join in the campaign and take this opportunity to support the *Observer*. "This is the first Black-owned newspaper in Oregon to qualify for membership in the Oregon Newspaper Publishers Association and the first to belong to the National Newspaper Publishers Association, the organization of Black newspapers.

"Although only two years old, the *Observer* has proved its worth and should receive the support of white businessmen. The *Observer* is read and respected - it is only good business to support this type of newspaper."

## NOTICE

**Night of Elegance**, sponsored by the United Black Students of the University of Portland, will be held on March 31, 1973 at the Hilton Hotel, Galleria Room, from 10:00 p.m. to 2:00 a.m. The affair will be semi-formal. George Lawson and the vivratones will provide the music. Call Betty Green, 283-7469 for information, or 283-7475/283-7524 for tickets. Donations of \$2.50 per person will be used to establish a Black Scholarship at the University of Portland.

The Southeast Democrats are holding a Pancake Breakfast at the Holgate House, 4601 SE 39th Avenue, Sunday, April 8, 1973, from 8:00 a.m. to 1:00 p.m. Adults \$1.50, kids \$.75, families \$5.

Refreshments, tours, demonstrations, prizes of new books, and live music will highlight an open house from noon to 5 p.m. Sunday, April 8, at the central Multnomah County Library.

The event, "Library Show, Let's Go", marks the start of National Library Week. It is the first open house at the central library since the 1964 centennial celebration.

One special factor in the Governor's plan is its new emphasis on early education. Because of the realization that the early years are the most decisive ones in a child's education, the Legislature increased the support of kindergartens that had been proposed by McCall.

I believe the Governor's plan is far-sighted and equitable, and I believe most of you will prefer it to the present system. At least you deserve to make that choice. Because of bipartisan legislative action, you will now have the chance.

Of specific interest to the Model Cities Neighborhood is the ratification of the 14th Amendment prohibiting discrimination on the basis of race. This bill, which should have been taken care of 100 years ago, was sponsored by Representative Bill McCoy, the only Black Representative in the Oregon Legislature. I co-sponsored this bill.

**Roth Life Cycle**  
2635 NE Broadway 288-8431

**Gitaro Mizutani**

Parts & service for all makes  
90 day free financing  
with approved credit

Prices good Wednesday March 28 thru Saturday March 31

# Shop And Save At Fred Meyer

MY-TE-FRESH Fresh Grade AA  
**Large Eggs**  
54¢ dozen

**Fresh Corn Fed Pork Pork Roast**  
Reg. \$1.09 lb. **89¢** lb.

MY-TE-FINE  
**Ice Cream**  
Reg. 59¢ 1/2 gal. **47¢** each

**Vel Liquid**  
Mint Detergent For Dishes  
22 oz. bottle Reg. 66¢ **27¢** each

**Imported From Israel Jaffa Oranges**  
6 lbs. \$1.00 50 lb. ctn. \$7.95

MY-TE-FINE  
**Peanut Butter**  
Reg. \$1.25 30 oz. jar **\$1.00** each

Bar-S  
**Wieners**  
Regular or All Beef  
Reg. 89¢ 12 oz. pkg. **59¢** each

**Schick Super II Cartridges**  
Reg. \$1.03 **71¢** each

MY-TE-FINE  
**Butter Crust Bread**  
Reg. 35¢ 22 1/2 oz. loaf **29¢** each

**Mallory D and C Cell Batteries**  
Pkg. of 2 Reg. 41¢ **2 for 21¢**

30 Gallon Galvanized  
**Trash Can**  
Reg. \$3.99 **\$2.97** each

Men's  
**Hosiery**  
Reg. 69¢ and 79¢ **39¢** pr.

**Papermate Flair Pens**  
Reg. 39¢ **21¢** each

**Girls' Panty Hose**  
100% stretch nylon, one size fits sizes 7-14. Available in white, tawhi or sunset colors. **76¢**

**Men's Hosiery**  
Choose arlon crew styles, wear dated 100% nylon ribs or cushion foot crews. Stretch sizes 10-13. Available Apparel Section.

Open 9 a.m. to 10 p.m. daily, including Sunday. Always plenty of free and easy parking.

**SPECIAL!**  
Dry Cleaning Only  
**\$2.50 per load**

SAVE YOUR CLAIM TICKETS!  
10 cleaning and pressing claim tickets good for 1 8lb. load of cleaning and pressing.

**BUDGET DRY CLEANERS**  
7220 N. Fessenden 286-2296

**ANDRAE CROUCH & THE DISCIPLES**

FRIDAY, APRIL 6, 1973 - 8:00 PM

**Portland Masonic Temple**  
1119 S.W. Park Ave.

Tickets: MEIER & Frank Downtown Store 224-2313 Stevens & son Lloyd Center

**Pampus**

**SAVE FRIDAY, SATURDAY, SUNDAY ON TELEDYNE PACKARD BELL'S 200 WATT 4-CHANNEL AUDIO SYSTEM**

STAGE FOUR "MATRIX" 4-CHANNEL SOUND

MP3-II STEREO HEADPHONES with DUAL VOLUME CONTROLS

Portable AM/FM/TA Stereo Tuner Amplifier with "Matrix" Four Channel Circuitry

SAVE OVER \$221

Receiver	199.95
Tunable	79.95
Headphones	19.95
4 Speaker Enclosures	14000
Cabinet Base	79.95
Cassett Player/Recorder	99.95
IF PURCHASED SEPARATELY	619.95

**CASH PRICE: \$398**

Lampas Revolving Charge:  
\$13 Per Month  
1 1/2 % Periodic Monthly Rate  
18% Annual Percentage Rate

**YOU CAN TAKE IT HOME • INSTANT CREDIT**

"Mid-town" 2600 N. E. UNION  
"Raleigh Hills," 6908 S W BEAVERTON HWY

4-TRACK STEREO CASSETTE RECORDER PLAYER with Two High Fidelity 1000s

Match 1 AUTOMATIC TURNTABLE with Diamond Stylus, Pause and Cuing Control

FOUR SPEAKER ENCLOSURES with AIR SUSPENSION SPEAKERS