

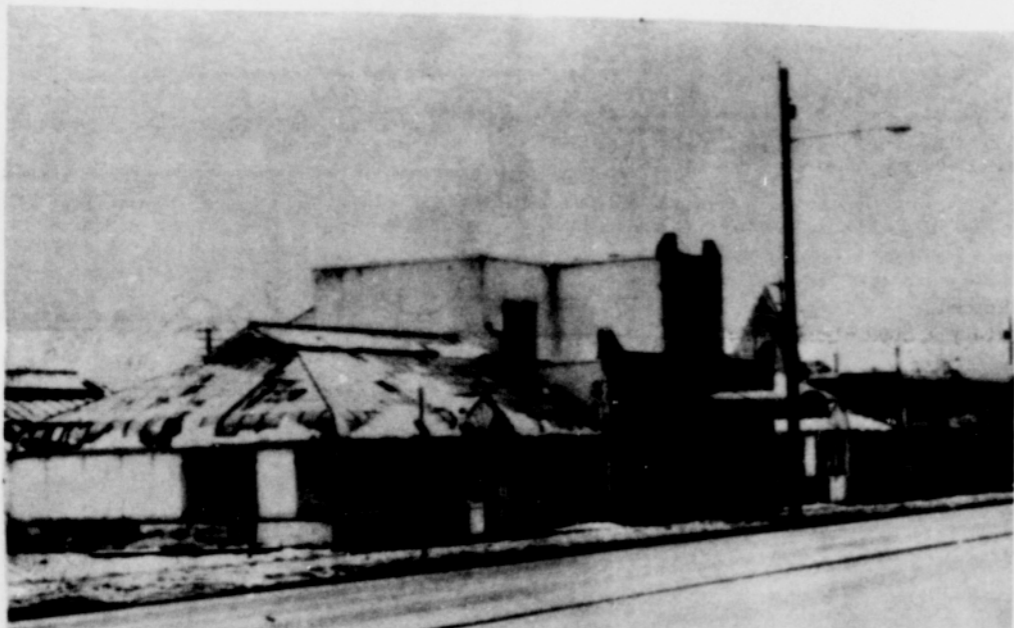
In a 1910 speech, William Killingsworth made the following predictions:

"Twenty-five years Hence"

"You will see solid buildings of the city from St. Johns on the North, Troutdale on the East, Clackamas River on the South, and at least five miles west of the Willamette River. You will see Portland Heights covered by elegant, palatial homes and a hotel covering at least five acres of ground will be located there-on, giving all guests a view unsurpassed on earth. "The tourists of the world will flock to this hotel, called the 'Scenic Castle' for it will be known world-wide as the beauty spot of earth. The entire west side of the Willamette to the foothills, a large district on the east side, and all the land located west of Union Avenue, between the rivers, to St. Johns will be used for business, and will be covered by the best modern, fire-proof buildings, ranging in heights from 10 to 35 stories. "Tubes and tunnels must be built for rapid transit, not only under the rivers, but there will be a large tunnel constructed in the center of the land between the rivers, starting near the present eastern boundary line of the city, running west to St. Johns. The carlines of the city will be changed - no double track anywhere, especially in the business district, Carlines will occupy the center of the street.

"The most radical change will be in the business district on the West Side. The only practical solution in my judgement, is to relieve the ever increasing congested condition caused by the narrow 60 foot streets, lack of alleys and water in cellars. Therefore, gentlemen, you will see double-decked streets and the present streets will be used for cars and heavy loaded wagons and trucks. The first stories of buildings will be used for basements and a certain class of trade and business. These perfectly constructed streets, installed above the present streets, will be used for carriages, automobiles and the walking, shopping public. The center of these upper streets will have a safety protected opening, covered with grass, beautiful with fountains and statuary. You will observe when this feasible plan is installed and perfected, the streets will not only be safe for the public but will appear like a park, one of great beauty and utility.

"The entire city at night will be as light as day for the unused electric power will be used for that purpose at slight cost. For the state and city will own and control this great natural gift, the energies, water powers of the state. You will see men and women travelling through the air for business and pleasure the same as the auto is now used. The entire roof of the 'Scenic Castle' fifteen stories in height, will be used for the convenience of air navigators. You will see the grand, imposing parks and boulevards. All streets in the city will be hard surfaced and beautified by fountains and Portland's matchless roses. But the most beautiful sight of all will be the smiling faces of healthy women and laughing, accompanied by successful, prosperous men, husbands, fathers and lovers."



Sight Pollution!

Remember seeing this building on Union Avenue? Do you know who the owner is? Read next week's issue to find out who is responsible for pollution in Albina.

This building and many others in Albina is a fire hazard, sight pollution, and against everything for which ecology stands.



Hamilton's Furs Traditional January Clearance Sale

Famous designers styles...see and buy the ultimate in elegance! We have the most desirable in furs priced from

\$20 to \$5,000

**Very Liberal Terms
Guaranteed Saving
Hamilton Furs
and Leather**

922 SW Morrison

(continued from page 1)

of white sentiment: "I admit the situation is bad, but it is not one that can't be handled satisfactorily. Their move into Albina is bad because Portland can accept only a minimum of Negroes without upsetting the city's regular life. We must remember however that we are at war and forget some of our previous ideals. We must be tolerant and considerate but we must, as well, be firm."

Dream a Losing Battle

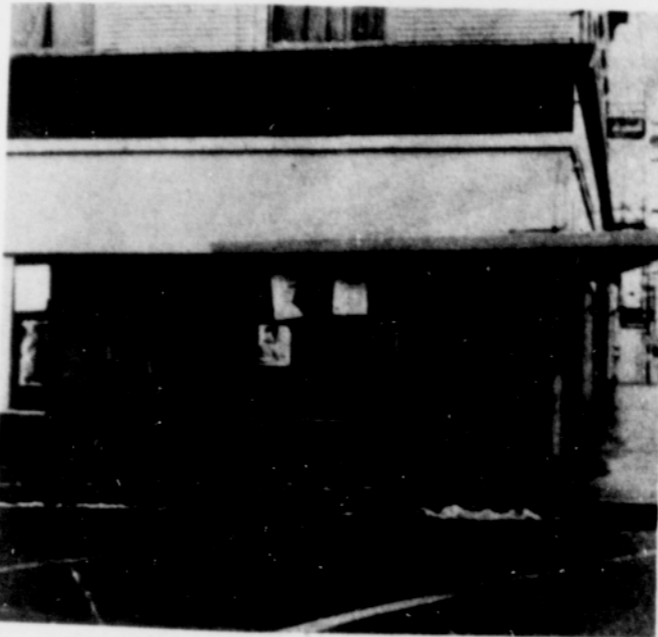
As time went on and the black population grew, Albina spread North and East. The Oregon political and economic restrictions made Albina a "state of mind" so that wherever blacks lived in Oregon they were confined to a "ghetto without walls".

Although blacks have worked diligently to build the dream that William Killingsworth once envisioned, it has thus far been a losing battle. Where blacks have invested in business, fighting the odds of high insurance rates and rents, inadequate funds, depressed markets and racism-white businesses have moved out. As black families have attempted to buy and improve their homes, without access to loans and mortgages, their white neighbors have moved to the suburbs.

Lower Williams and Union Avenues are inhabited by the decaying shells of empty buildings - decaying because their white owners have no interest in the Albina community. They are not interested in keeping these buildings habitable - in putting them in shape to receive new black businesses, or white, but are only interested in preserving the land in long term investments against the day when Albina becomes an industrial area.



These buildings are a terrible sight on Williams Avenue and places not only a blot on Mr. Killingsworth's dream but also on the dream of every citizen that lives works or cares about Albina.



Let them hold the land, since that is their prerogative in a capitalist system, but let them also risk the land of its eyesores and fire hazards that would not be allowed to stand in any other area of the city.

A New Dream

Mr. Killingsworth's dream is not dead. The people of

Portland could still make that dream a reality if racism did not blind them to the dream - if they could allow themselves to help a black area flourish, if they could support black businesses and programs, and if they could allow blacks a voice in the planning of the destiny of Albina.



This building has already burned out once and remains a fire trap as well as a danger to children who might be led to explore.

Have Your Birthday party free at Geneva's



Portland Trail Blazer Stan McKenzie along with (left) Benita Johnson and Judy Asher of Pacific Northwest Bell Community Team attend Sickle Cell Anemia Publicity Luncheon at Geneva's. (Photo by Paul Knauts)

Black Woman mechanic

Repairing combat vehicles is all in a day's work for Mrs. Ernie Starling at the Red River Army Depot near Texarkana.

She's the first woman to complete the Labor Department's apprenticeship program at the Texas installation, and she chose to be a combat vehicle mechanic.

"I wasn't sure how I'd do in some parts of the training - welding scared me at first," she said. "But I found it all interesting."

"And I wondered how my new co-workers would accept me when I completed my training. But, I didn't have any problems. We get along fine." Born at DeKalb, Texas, a small town just west of Texarkana, she was one of three children. Her father died when she was 15. Her mother now lives in Brooklyn, New York.

She had 12 years of schooling in DeKalb, then got a job as a mechanic's helper at the Red River Army Depot.

One day she saw an announcement on the bulletin board concerning the apprenticeship program. As soon as possible, she took the examination, passed it, and was selected by an apprentice committee.

Clyde Aldridge, foreman of the Combat Reconditioning Section in which Mrs. Starling works, says she is a good employee and a good worker. "She can perform any duty on the assembly line."

Mrs. Starling says she plans to remain at Red River as long as she can, and to advance herself as far as possible. She wants to give her two children the best possible education and training so they can get good jobs, too.

"Mrs. Starling is the first black woman ever to complete an apprenticeship training program here," says William G. Hogan, the Labor Department's apprenticeship and training representative in East Texas. "We're happy for her."

Portland/Observer Thursday, Jan. 6, 1972 Page 6

HMO planning grant goes to Emanuel

An enthusiastic reception from Emanuel Hospital authorities Monday greeted word that Emanuel has been given a \$100,000 planning and development grant to explore feasibility of a Health Maintenance Organization.

The announcement about the Health, Education and Welfare grant came from the office of Senator Mark Hatfield.

Although underway only in scattered areas of the nation, "HMOs" are a development concept for the delivery of health care. Application for the grant was authorized by the hospital's Board of Directors and its Medical Staff, which unanimously approved application "to study, plan and develop the necessary structure which could lead to an operational grant for functional HMO."

Some of the philosophy of the concept is implied in the term "health maintenance," indicating prevention as well as treatment of disease. Health maintenance organizations are combinations of physicians and hospitals or other facilities to provide a comprehensive, integrated health care program on a prepayment, self-supporting basis to

a specific enrolled membership.

Richard Hopkins, M.D., was appointed by Emanuel Medical Staff President Walter Reynolds, M.D., and the executive committee as chairman of an ad hoc medical staff committee to develop the application. The committee worked in cooperation with the Model Cities demonstration agency, Comprehensive Health Planning Association, and other interested agencies.

An advisory council will be established to develop a corporation which will include community members, physicians, hospital administration, and representation from the Emanuel Board of Directors to direct further planning and development.

Second stage in the process will be identification of the possible enrolled population, which can include "medically underserved" areas like the Model Cities or southeast Portland. Under existing guidelines, however, the HMO cannot be focused primarily on a "poverty community" and in fact Medicare, welfare and low income groups cannot exceed 50% of the total program.

**MT. Sinai Coptic
Presents
Sensational
Gospel sons
Quartet**

**Bishop W. G. Hardy
The Little King**

January 9th (Sun.) 8:00 p.m.
Broadcasting each Sun. 4 p.m.
Sunday morning 7:30 a.m.
Sunday Television
8 p.m., Channel 8

Crowds Crowds
10th and Beech

Everyday is a Super-Sale Day at the BEE but this is unbelievable!

**SUNDAY
OPENING
11 AM
to
5 PM**

Further reductions prevail Sunday on fine furniture already marked way down. Some slightly freight damaged... but mostly new famous brand you'll recognize at a glance. Don't miss it!

**STOREWIDE CLOTHING
SALE NOW ON
(Also open SUNDAY)**

**500 Daytime
DRESSES
val. to 19.95
\$3.99 (2 for \$7.99)**
Full & Half Sizes

Entire stock of Men's, Women's & Children's clothing at closeout prices... save 1/2 and more!

At the BEE ANNEX, 739 N. Killingsworth

6 Hour . . . Sunday only Storewide Furniture CLEARANCE

| Just a few examples: | Reg. | 6 hour Sale |
|---------------------------------------|---------|-------------|
| 5 Pc. Famous Dinette Sets | 89.95 | 44.95 |
| Studio Couches . . . several to go | 112.00 | 49.95 |
| Lane End Table | 79.95 | 19.95 |
| Rattan Twin Head Board | 29.95 | 9.95 |
| Twin Size Box Springs | 34.95 | 12.95 |
| 5 Pc. Bedroom Set | 289.95 | 159.95 |
| Spanish Sofa-Green Velvet | 300.00 | 149.95 |
| Lane Book Case Desk | 289.95 | 99.95 |
| Slat Top Walnut End Table | 24.50 | 5.00 |
| Magnavox Stereo-Colonial Style | 349.95 | 214.95 |
| Queen Size Sleeper | 445.00 | 199.95 |
| 5 Pc. Meditor. Bedroom Set | 429.95 | 299.95 |
| Metal Bunk Beds-Comp. | 119.95 | 89.95 |
| 24" x 48" Scenic Framed Pictures | 19.95 | 5.95 |
| Colonial Swivel Rocker | 130.00 | 54.95 |
| Lane Room Divider | 289.95 | 99.95 |
| French Prov. Sofa and Love Seat | 650.00 | 399.95 |
| 10 Ft. Traditional Sofa | 895.00 | 299.95 |
| Circular 3 Pc. Sectional | 1195.00 | 319.95 |
| Queen Sleeper-Tuxedo Pink Vinyl Cover | 495.00 | 179.95 |
| Lane Contemp. Desk-Chrome Legs | 329.95 | 89.95 |

EVERYTHING GOES
Bedroom Sets - Living Room Sets - Dining Room Sets - Occasional Tables - Lamps - Pictures - Stereos - TV's Etc.

The BEE CO.
A branch of 3 stores
283 3171

N. KILLINGSWORTH AT ALBINA . . . Just off the Minnesota Freeway!