

Beauty ★ Fashions **Women Clubs** ★ Household

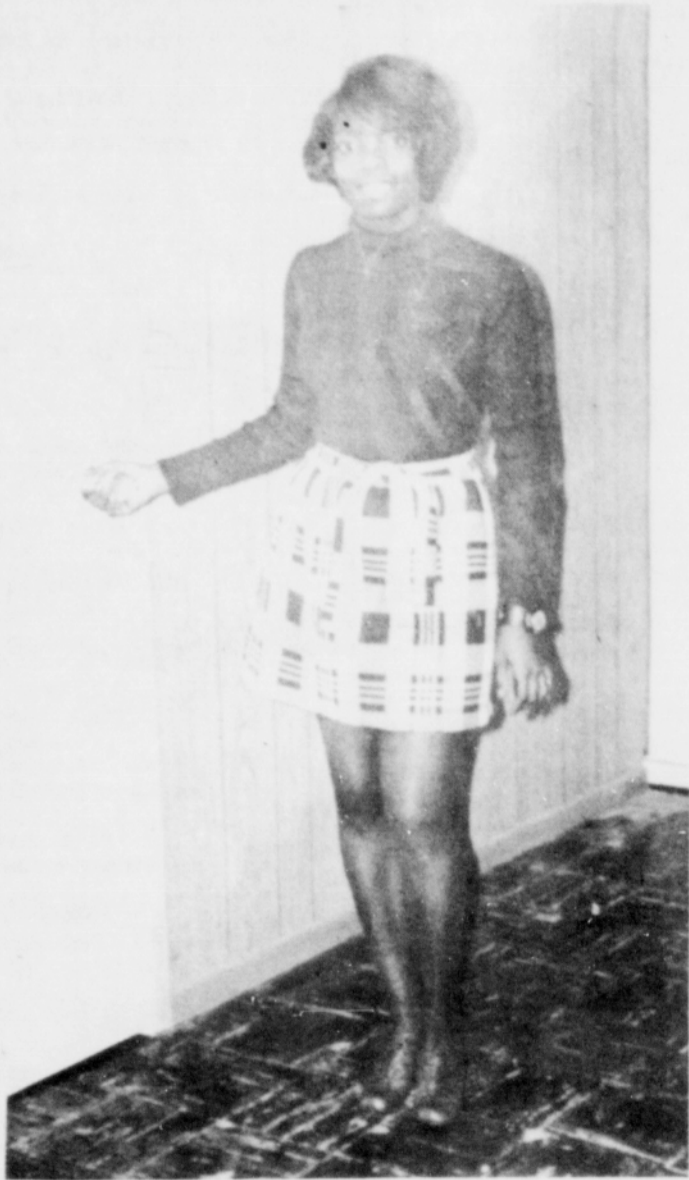
Total approach to beauty aim of Studio

A total approach to beauty is the aim of North Portland's newest service, FIGURINE Shaping Studio. Holding its grand opening for regular hours on Tuesday, November 16, Figurine will provide slendertizing and self-improvement opportunities to North and Northeast women who have previously not had such services readily available.

The uniqueness and completeness of the program was apparent when Mrs. Kay Haraguchi, owner and chief counselor, described the "shaping up" processes offered by Figurine. "The program includes diet advice, proven forms of active and passive exercises, optional classes, a lending library, and free finishing and make-up classes for members who successfully complete their programs," she said.

Mrs. Haraguchi, a practicing registered nurse for twelve years, stated that she wished to start Figurine to help people prevent illness and build health and positive attitudes toward themselves. She has incorporated the expertise of herself and others into all facets of the program. All diets have been medically approved, and her medical knowledge enables her to work closely with women who are on Weight Watchers and medically designed diets. Reducing programs will be tailored to each woman's specific needs, in accordance with any doctor's wishes.

"We will have reducing machines of multiple varieties," Mrs. Haraguchi said, "and will offer exercise classes in addition. Other optional classes will be Music, nutrition, Yoga, and motivation - discussion classes, all designed to help members "Think Thin." Exercise classes will be conducted by models, nutrition classes will be run by Mrs. Haraguchi, and motivation - discussion classes will be led by a certified social worker.



A picture of physical comeliness beautiful Joyce Starnes doing what comes natural.

"Hollywood beauty secrets most of this information will be available to all members. "When a member successfully completes her individualized 'reshaping' goal, Figurine's model-instructors will provide free make-up and finishing classes, so that the 'shaping up' can be a total experience," she said. Figurine's cost is lower



She fulfills one of her body requirements by following classes at Figurine.

than most salons in the city, and the fee schedule was designed so that women can afford to improve themselves while running their households. Members can attend as often as they wish and as many classes as they choose at no additional cost. Shaping hours will be from 10:00 a.m. to 8:30 p.m. Tuesday through

Saturday, and class will follow from 9:00 to 10:00 p.m. "We want this service to benefit North and Northeast men, too," Mrs. Haraguchi said with a smile. "We will offer special programs and hours for men, if interest is shown. We also hope they will enjoy improved girl watching."

Welfare reform amendments supported

The League of Women Voters announced it will support Senator Abraham Ribicoff's welfare reform amendments when they are introduced in the Senate.

The announcement was made by League President Lucy W. Benson who stated: "The Ribicoff amendments will provide the brand of welfare reform which this country needs. They are a significant improvement over the provisions of H.R. 1 and, if passed, will go a long way towards relieving the welfare crunch now squeezing both welfare recipients and state fiscal resources."

"We supported House passage of H.R. 1 with some reservations but we have absolutely no reservations about the seriousness of the welfare crisis. Legislation is desperately needed in this session of Congress to counteract state cuts in welfare rolls and benefits."

Among the reasons contributing to League support, Mrs. Benson cited that Ribicoff proposals would: set an initial \$3,000 yearly income floor for a family of four; give more financial relief to the states; guarantee that no recipient receive less than he was getting in January, 1971; and provide better protections for the rights of welfare recipients than the House passed bill.

The League president was also critical of the depth of the Administration's commitment to welfare reform as a top domestic priority. "We don't see the Administration pushing too hard in the Senate nor do we understand rhetoric that one day speaks of improving the lot of the 7-1/2 million children receiving benefits and the next day stigmatizes their parents as cheaters and malingerers."

Mrs. Benson announces that special bulletins were being sent to 1300 Leagues throughout the country calling for an all-out, end-of-session push by League members and other groups active in the welfare reform campaign. Special emphasis is being placed on working with state governors to enlist their support for federal welfare legislation.

If the Ribicoff improvements are incorporated in the House passed legislation, the nation could be taking a monumental step toward eliminating poverty for more than 25 million Americans, Mrs. Benson stated. "It's amazing that with the welfare system so patently ineffective, this country has waited so long to enact legislation that will take us out of the current mess. Senator Ribicoff's amendments seem to us to be just that kind of legislation."

Other components of the Ribicoff proposal include: --yearly increases in payment levels, reaching the poverty level by 1976 with a cost of living adjustment clause. --required state supplementation with the federal government paying 30% of

supplemental payments above federal floors. --full federal takeover of welfare costs over a five-year period.

--provision of a least 300,000 public jobs. --improved work incentive income disregards. --all job referrals at no less than the federal minimum wage. --no work registration for mothers of children under age 6.

--eligibility provisions for a single individual and childless couples.

CM COLOR SO NATURAL
(Curtis Mathis, of Course)

YOU FORGET IT'S A PICTURE
FACTORY DIRECT PRICE \$398^{WT}
3 DAYS ONLY!

NEW For '72

FULL 25" VIEWABLE DIAGONAL PICTURE

- AUTOMATIC DEGAUSING
- INSTANT ENTERTAINMENT
- AUTOMATIC CHROMA CONTROL

WHITE-MANN, Inc. 5001 N.E. Union at Alberta Since 1946 288-5303

PETRIE'S 2160 W. Burnside Since 1932 227-0431

CLEANERS & LAUNDERERS
Established 1912

QUALITY DRY CLEANING
REASONABLE RATES

- *SAME DAY SHIRT SERVICE
- *2 HOUR CLEANING
- *SATURDAYS UNTIL NOON
- *COMPLETE LAUNDRY SERVICE

SELF SERVICE DRY CLEANING AVAILABLE
Do It Yourself And Save \$5

1014 N. KILLINGSWORTH
4 Blocks East of Interstate
289-9357

Something for the Car

DOM AUTO PARTS
AUTOMOTIVE PARTS & ACCESSORIES

710 N. E. KILLINGSWORTH STREET
287-1254

MON-SAT 8 a.m.-7 p.m. 770 N. E. KILLINGSWORTH STREET

Jackson High present "Lovers"

"Andrew Jackson High School, 10625 S.W. 35th Ave., is proud to present the play "Lovers" by Brian Friel. The two part play, Winners and Losers, can be seen on Thursday, November 20, at 8:00 p.m. The ticket prices are \$1.50 for adults and \$1.00 for students.

The Real Oregon

"We know it like our own name."

the oregon bank

Consumer Education classes to be offered

Portland Community College Consumer Mobile Lab and Multnomah County Expanded Nutrition Program will be cooperating to provide consumer education classes at the Frances Center, 5814 S.E. 92nd Ave. The first session, featuring inexpensive Oregon foods for Thanksgiving, will be held on Friday, November 12, 1971 from 10 to 12 noon. Helen Shipley, nutrition aide, will demonstrate the preparation of interesting, economical, and appetizing Oregon foods, and Portland Community College Home Economist Joanne Lowry will discuss buying guides and consumer tips.

LADIES
This is your page
Let us hear from you with your hints. Also any suggestions as to what you want on your page.

Write your letters to:
Women's Editor
Portland Observer

May Angelou first Black Woman Movie Director

May Angelou will soon become the first black woman movie director, as she directs the movie of her autobiography, "I Know Why the Caged Bird Sings". The book, which tells of her first 16 years, was on the best seller list for 20 weeks and was one of the five finalists in the competition for the 1970 National Book Award.

Miss Angelou wrote the screenplay and will compose the background score. Her original screenplay, "Georgia", was recently filmed in Denmark, making her the first black woman screenwriter.

Miss Angelou was born in St. Louis and spent her early childhood in a small town in Arkansas. In 1940 she and her family moved to San Francisco. With just a high school education she became a singer, educator, dancer, author, historian, lecturer, actress, producer, editor, song writer, poet, and playwright. She speaks six languages including English.

Among her accomplishments in acting were a role in the movie, "Porgy and Bess"; the female lead in Genet's, "The Blacks"; and a role in the movie "Calypso Heatwave". In collaboration with Godfrey Cambridge she produced, directed and performed "Cabaret for Freedom", a satirical review.

Miss Angelou served as the Northern Coordinator for the Southern Christian Leadership Conference. She lived in Africa for some time and was the associate editor of "The Arab Observer" of Cairo, the only English language weekly in the Middle



East. She also worked on newspapers in Ghana and South Africa.

Her recent work includes a lecture series on "The Negro Contribution to American Culture" at UCLA; a one-act play, "The Least of These"; "The Clawing With-

in", a full length drama dealing with the current crisis between blacks, whites and Jews; a book of poetry, "Just Give Me A Cool Drink of Water Fore I Die"; "All Day Long", collection of short stories about black life; and a book of poetry in collaboration with actress Abbey Lincoln, "The True Believers."

K SHOP **KNOW'S**

FOR **BRANDS you know**
VARIETIES you like
SIZES you want

The Friendliest Stores in Town Since 1908

MEMBER OF UNITED GROCERS

Hold A "Coffee Klatch" How?
Call 288-8261

Oooooooh that smarts!

That's what you get for being so fresh!

WONDER
ENRICHED BREAD

One squeeze tells you why people call us...

"The Fresh Guys"

Wonder Enriched Bread is wrapped while it's still warm from the oven. Wrapped in a Sta-fresh wrapper to keep it fresh, flavorful and delicious. But Wonder doesn't stop there!

Wonder Bread is rushed warm into bakery trucks...then off to your neighborhood store!

Next time you're buying bread, look for Wonder. One squeeze tells you why people call us... "The Fresh Guys"!

WONDER
ENRICHED BREAD
helps build strong bodies 12 ways.