

Jacks and Jills Fashion show

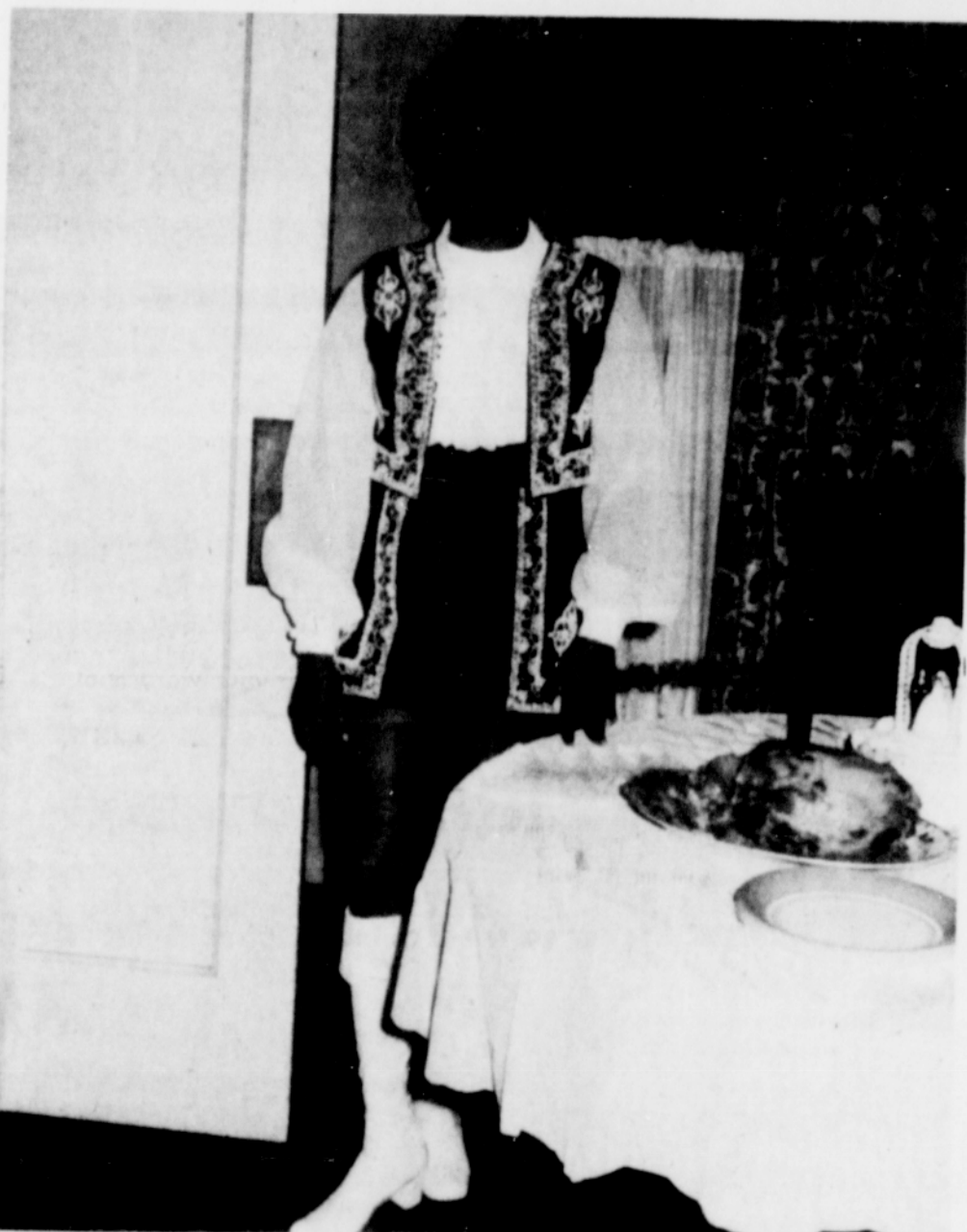


Mrs. Hilton Smith



Shiela Cowser

Reception at Aunt's home



Mrs. Willard Tuck

Make your picnic safe

According to the U.S. Public Health Service, foodborne illness has become part of an American tradition - the family picnic. Hundreds of persons have become ill after eating picnic lunches that have been mishandled.

This year consider bringing the food materials, and cook or prepare them right at the picnic site. Many areas provide stoves, fireplaces or grills. This saves time, is fun, and may prove safer. However, if proper care is taken, meals may be prepared and transported safely from home.

Make sure utensils and equipment are clean. Hands should be washed thoroughly before preparing, serving or eating food. Staphylococcal food poisoning generally originates from unclean hands. (Many food-service organizations use an anti bacterial skin cleanser such as PhisoHex, to keep hands as bacteria free as possible.)

Keep food covered and, hot or cold, as required from home to picnic plate. Leftovers should be saved only if the food is returned immediately to an ice-chest in which sufficient unmelted ice remains.

FISH PARMIGIANO

2 eggs, beaten
1/4 teaspoon salt
1/4 teaspoon pepper
1 cup dry bread crumbs
1/2 cup grated Parmesan Cheese
2 pounds fresh or frozen (thawed) fish fillets
1 can (15 oz.) tomato sauce
1/4 cup lemon juice
1/2 teaspoon basil leaves, crushed
1/2 teaspoon leaf oregano, crushed
Mozzarella cheese slices

Combine eggs, salt and pepper. Combine crumbs and Parmesan cheese. Dip fish in egg mixture, then in crumb mixture. Place in buttered jelly roll pan skin side down. Combine tomato sauce, lemon juice, basil and oregano; pour over fish. Top with Mozzarella cheese. Bake in a preheated 350 degree oven 20 - 25 minutes or until fish flakes when tested with a fork. Makes 6 - 8 servings.

New Hope Fruit Filled Cookies

Although tuberculosis often is considered an adult disease, it is even more serious in children. Medical authorities warn that a young child who reacts positively to any TB test most probably has an active infection requiring therapy.

Primary pulmonary TB in children usually appears to be a case of long-lasting influenza, or passes entirely unnoticed. Congenital TB almost never occurs, but newborn babies are often infected soon after birth if not separated from tubercular mothers.

In children the disease tends to develop more rapidly into more serious stages than in adults. Even when the tubercle bacillus remains inactive in a child's lungs, it can reactivate years later and cause an active infection.

Fortunately, a newly introduced antibiotic drug, Rimactane, in combination with another standard TB drug, promises to make young patients noninfectious earlier than heretofore, permitting them to continue treatment at home with their families.

Warning

Eyeglass wearers are warned by the National Safety Council to insist on shatter-resistant lenses and flame-retardant frames when buying prescription eyeglasses or department store sun glasses. The Food and Drug Administration has required a regulation to require new eyeglass lenses to meet a standard impact test.

PIANO OR ORGAN LESSONS: Latest and modern method guarantees that you can learn to play either instrument! For information, please call...

Time to paint

Exterior painting time is here. Summer weather creates ideal conditions for painting by removing excess moisture from wood to allow penetration of the oils and curing of paint. Paint applied to dry surfaces has a better lasting quality and will not blister or peel from trapped moisture trying to escape when temperatures rise.

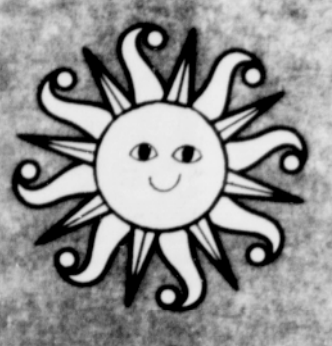
All loose, flaking and chipping paint must be scraped and sanded to produce a solid base for the new paint. If the finish shows a particular board where all paint has failed, it indicates a defective piece of lumber that should be replaced, primed and then painted to assure a perfect job.

Thorough inspection of areas near kitchen, laundry and bath rooms where hot water is used and creates free water vapor or steam inside the house should be made.

Paint failure most often occurs near windows in such rooms as a result of the moisture moving through the walls to the paint layer on the outside. Continued moisture accumulation forms paint blisters and is the start of a major paint failure.

Ventilator hardware designed to be weather proof can be installed in the outside walls where paint has failed from moisture inside. The ventilators, available at lumber retailers in a variety of shapes and sizes, allow walls to breathe and prevent paint blistering. The hardware is insect-proof and may be painted to blend with the exterior finish lumber.

environment.



Stenographers are getting so independent that one of them recently asked her boss to stop using words that caused him to complain about her spelling.

Home and Family

remedy hazardous

Two California pediatricians have warned that contrary to recommendations found on labels of common household products, instructions in first-aid manuals, and in some medical books, salt should not be given to induce vomiting in children. Salt is potentially hazardous physicians Drs. Frank DeGenara and William Nyhan report, and should be kept away from children.

"Saucy" Grapefruit Dessert



An elegant continental sauce spoons over fresh, coconut-frosted Coachella Valley grapefruit sections—glistening ruby, white and some tinted pale green. Who'd think something this special could be so simple to make—and good for you, too?

The sweet-tart California desert grapefruit provides an abundance of vitamin C, highly touted these days as a goad to help fight the old cold and flu bugs. Its low calorie count makes Coachella grapefruit easy on the figure too.

Pastel Grapefruit Compote

2 Coachella Valley ruby grapefruit
4 Coachella Valley white grapefruit

1/4 teaspoon green food coloring
6 tablespoons shredded coconut

Peel and section grapefruit over bowl, reserving juice. Remove all membrane. Sprinkle 1/4 teaspoon green food coloring in 1/4 cup water and tint half of the white grapefruit a delicate green. In a large crystal compote, arrange alternating sections of white, green and ruby grapefruit in spiral fashion. Sprinkle with coconut. Chill thoroughly. (Makes 6 servings.)

Grapefruit Sauce

1 cup sugar
Pinch of salt
2 tablespoons cornstarch
3 teaspoons grated grapefruit rind
2 egg yolks, beaten

1 cup fresh grapefruit juice
2 tablespoons butter
2 tablespoons Kirsch (optional)

In a saucepan, combine sugar, salt, cornstarch and grapefruit rind. Blend in beaten egg yolk thoroughly. Gradually add grapefruit juice. Cook over medium heat stirring constantly, until mixture thickens. Add butter and cook one minute longer. Chill. If desired, just before serving, stir in Kirsch and serve with custard compote. (Makes about 2 cups sauce.)

HAVE YOUR CLUB MEETING FREE AT GENEVA'S.



Standard Oil Service Station Manager Wister Davis (left), Assistant Manager Charles Straughter (center) and Ron Carter (right), receive congratulations for selling 100 automobile tires for the month of June at Soul Food Banquet at Geneva's.

Obituaries

DENNIS LEON BROWN

Dennis Leon Brown, 18, who drowned near Sauvies Island July 29, was born in Portland March 31, 1953, and had lived here all of his life.

He was a graduate of Roosevelt High School and a member of the Columbia Boys Club. He was employed by Albertson's.

Funeral services are being held today, August 5, at 1:00 at the Killingsworth Little Chapel of the Chimes with Little interment in Willamett National Cemetery.

Surviving are: mother, Christine Brown; brothers: John D. and Stanley; sisters: Marjorie, Patricia, and Mary Elizabeth; grandmother, Mrs. Mary E. Jordan and sister - in - law, Brenda.

JOHNE LOU WIGGIN

Funeral services will be held Friday at St. Philip's Episcopal Church for Mrs. Johnnie Lou Wiggin, 229 N. Shaver Street. Mrs. Wiggin, a student counselor at Jefferson High School, died of an apparent heart attack at her home Friday. She was born in Harotto, Ark.

January 17, 1918. She was a member of St. Philip's Church and served as secretary to the women's club there.

Surviving are the widower, D. M. Wiggin; three children: Regina, Dee Edward, and Gary of Portland; two sisters: Mrs. Lynne E. Williams, Chicago, and Mrs. Majuel M. Cole, of Portland.

Vann's Funeral Chapel was in charge of arrangements.

ISAAC LEWIS

Funeral services were held August 4 for Isaac Lewis, 64, who died July 30 in a local hospital.

Mr. Lewis was born in Mississippi June 16, 1907 and moved to Portland in 1941. He had been employed by the Joliet Co. for 16 years.

He is survived by the widow; Mandy Lewis; daughter, Henrietta Rentie; one granddaughter; one great granddaughter; five brothers, two sisters and his mother, Margaret Lewis in Mississippi.

The Little Chapel of the Chimes was in charge of arrangements and interment was in Rose City Cemetery.

ELLA S. HARTMAN

Funeral services for Ella Sarah Hartman will be held on Friday, August 6, 1971, at 11 a.m. at the Killingsworth Little Chapel of the Chimes, with interment at Riverview Cemetery. Mrs. Hartman, who passed away on August 1st, was born in Camp Ground, Missouri on September 9, 1881, and moved to Portland in 1920.

She is survived by two sons, Harry H. Hartman of Chicago, Illinois and Lonnie L. Hartman of Portland, 7 grand children, 12 great grand children, one great great grandchild, and four sisters, Mrs. W. A. Bales, Mrs. Rena Martin, Mrs. Ray Beck, and Mrs. Minnie Gallagher.

4-PLEX

\$3500.00 down, monthly payment \$200 includes principal, interest and taxes. Seller will complete upgrading. Total price \$19,000. Williams Ave., near Alberta. Call:

Henry Ireland
228-3181

Dean Vincent, Inc.
333 S.W. Park Ave

Market \$150,000 gross

Owner retiring. Sale includes very nice brick building. Owner operator can make \$12,000 year. \$7500 down payment includes \$3,000 inventory and \$4500 on building and equipment. Balance on Easy payments or should qualify for minority economic opportunity loan.

Henry Ireland
228-3181

Dean Vincent, Inc.
333 S.W. Park Ave.

MOR-MILE
DISTR. Carnegie TIRES
RECAP SPECIALISTS
"NUFF SAID"
284-9758
3368 N.E. UNION

ISLAND DRIVE-IN DAIRY
3410 N. WILLIAMS AT IVY
COUPON DAYS
Half and Half..... 40¢ qt.
WITH THIS COUPON
COUPON GOOD THRU AUG 14th.

COUPON DAYS
Pure Orange Juice 29¢ qt.
WITH THIS COUPON
COUPON GOOD THRU AUG. 14th.

RECORD LIBRARY
and Family Recreation Center
826 N. KILLINGSWORTH
PORTLAND, OREGON 97217
(503) 285-2564

Proudly Announce Family Night. Every Wednesday Night will be Family Night. All record purchases of \$2.00 or more will be discounted 10%. All pool parent junior \$1.00 per hour. All soft drinks two for .25. Arden's ice cream reg \$1.19 half gallon .99. Qts. reg .79, .68. Skill games for fun and recreation. Pick up the Jet every Thur. at Record Library. Your home town newspaper carried by request. We are open seven days a week, Monday through Thursday, 12 noon to 10:00 p.m., Friday and Saturday to 12:00 Midnight. Sunday 2:00 p.m. to 10:00 p.m.

CLEANERS & LAUNDERERS
Established 1912
QUALITY DRY CLEANING
REASONABLE RATES

*SAME DAY SHIRT SERVICE
*2 HOUR CLEANING
*SATURDAYS UNTIL NOON
*COMPLETE LAUNDRY SERVICE

SELF SERVICE DRY CLEANING AVAILABLE
Do It Yourself And Save \$5

1014 N. KILLINGSWORTH
4 Blocks East of Interstate
289-9357

"The Bank With a Purpose"
FREEDOM BANK OF FINANCE
Owned by the People... operated for the People

- Checking Accounts
- Saving Accounts
- Bank by Mail
- Real Estate Loans
- Auto Loans
- Home Improvement
- Travelers Checks
- Money Orders
- Escrow Service

V. F. BOOKER
PRESIDENT

Free Checking Accounts with \$300.00 Minimum Balance
Free Checking Service to Senior Citizens (65 or over)
OPEN SATURDAY 10:AM-2:PM
MONDAY - THURSDAY 9-5
FRIDAY 9-6

MAIN OFFICE
2737 N.E. UNION
282-2216

WALNUT PARK BRANCH
728 N.E. KILLINGSWORTH
288-6571

Member Federal Deposit Insurance Corp

PEPI'S BOTTLE SHOP
Let PEPI'S BOTTLE SHOP be your headquarters for champagne, wines, mixers... at the lowest prices in town...

Lloyd Center - Next to the Liquor Store
PEPI'S One and Only Store
Open 9:30 a.m. to 9:00 p.m. Daily
Sundays: Noon to 4:00 p.m.

281-2731