

WEST KATIAN LUMBER TAKE APPLES

Shipment Through Tropics Is to Be Watched.

CRAFT IS COMING TODAY

Refrigerator Vessels May Be Used If Fruit Demand in Latin-America Warrants It.

Possible expansion of Oregon's apple export trade...

The West-Katian is not in the class of refrigerated ships...

Prunes Also Are Shipped. The fleet is looked after in the northwest by A. M. Gillespie, Inc., and in addition to the limited apple shipment, there have been a considerable amount of prunes...

Call Made at New York. The ship sails from the European side and called at New York on the way to the canal.

In the Pacific-Argentine-Brasil trade there is reported a more active solicitation for Pacific coast waters...

SHIP BROKERS OPEN OFFICE. Chalmers & Cartwright, Inc., New Co-Partnership Here.

Formation of Chalmers & Cartwright, Inc., has ushered a new co-partnership into the marine industry...

Vessels Get Kalama Lumber. KALAMA, Wash., Oct. 20.—(Special.)—The ship Daisy Freeman loaded lumber at the Oregon Kalama Lumber mill Thursday...

KLAN OFFERS MAYOR AID. The full strength of the Ku Klux Klan in Oregon yesterday offered to Mayor Baker for use in combating the I. W. W. The offer was made by Fred L. Gifford, "grand dragon of the state of Oregon."

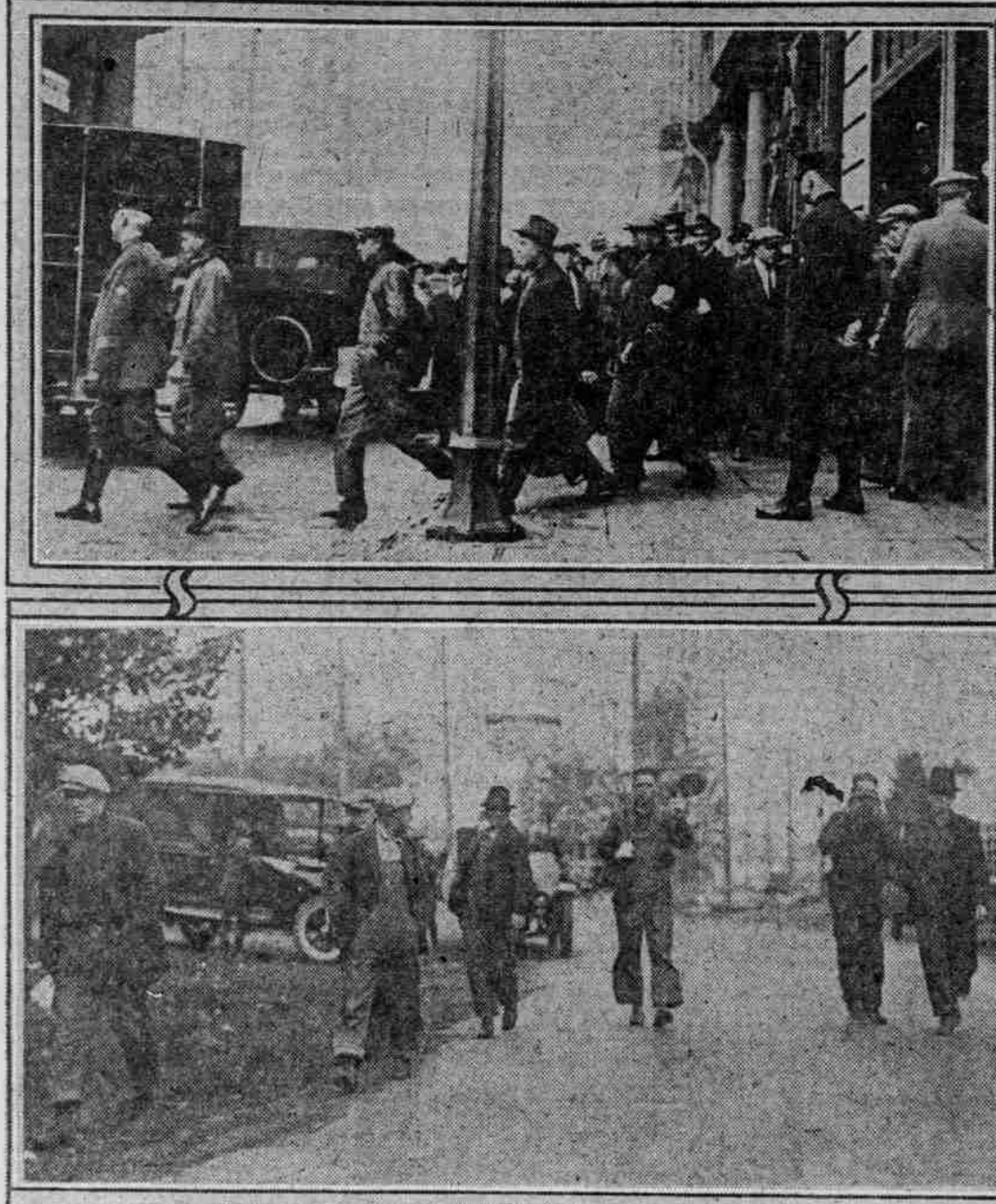
HELP IS PLEDGED IN WAR WITH I. W. W. HORDES. State Grand Dragon Gifford in Letter Says That Knights Will Co-operate.

SEVEN GET 30 DAYS EACH. Men, Suspected of I. W. W. Inclinations, Are Sentenced.

Portland Declared Chosen. The I. W. W. of the country has selected Portland as a center for the beginning of trouble intended ultimately to assume the proportions of a revolution...

Clubs to Be Fostered. IMBLER, Or., Oct. 20.—(Special.)—As soon as the apple crop is harvested the trustees of the local public schools plan to give encouragement to the Boys' and Girls' club work throughout this vicinity.

CROWDS SEE I. W. W. PRISONERS STARTED ON THEIR WAY OUT OF PORTLAND.



Upper picture—Wobblies leaving jail building to board vehicles waiting to take them to city limits. Lower picture—The first detachment of deportees starting on their outward trek at city boundary near golf links.

FIRST I. W. W. REPORTED PARTY OF 23 ESCORTED TO CITY LIMITS.

Adjutant-General Asked to Keep Eye on Situation in Case of Need for Troop Call.

(Continued from First Page.) committee of the I. W. W. at Chicago warning him that arresting men merely because they happen to belong to the wobbly organization is, in the committee's opinion, unconstitutional.

As a matter of fact every banner on the picket line, every handbill that has been distributed, every demand to stop work has been signed and issued by the Industrial Workers of the World. The I. W. W. has gained a membership in this organization and because of this I. W. W. members called a meeting and the non-radical members of the I. W. W. were expelled from the organization.

2000 I. W. W. Ordered Here. Corroborative information obtained by the mayor before the present campaign was instituted in Portland was that the I. W. W. had issued for thousands of wobblies to come to Portland and participate in the activities of the city government.

SEVEN GET 30 DAYS EACH. Men, Suspected of I. W. W. Inclinations, Are Sentenced. Seven men, suspected of I. W. W. inclinations, were given 30-day jail sentences in the district court of Portland yesterday.

Portland Declared Chosen. The I. W. W. of the country has selected Portland as a center for the beginning of trouble intended ultimately to assume the proportions of a revolution.

Clubs to Be Fostered. IMBLER, Or., Oct. 20.—(Special.)—As soon as the apple crop is harvested the trustees of the local public schools plan to give encouragement to the Boys' and Girls' club work throughout this vicinity.

Clubs to Be Fostered. IMBLER, Or., Oct. 20.—(Special.)—As soon as the apple crop is harvested the trustees of the local public schools plan to give encouragement to the Boys' and Girls' club work throughout this vicinity.

Clubs to Be Fostered. IMBLER, Or., Oct. 20.—(Special.)—As soon as the apple crop is harvested the trustees of the local public schools plan to give encouragement to the Boys' and Girls' club work throughout this vicinity.

Clubs to Be Fostered. IMBLER, Or., Oct. 20.—(Special.)—As soon as the apple crop is harvested the trustees of the local public schools plan to give encouragement to the Boys' and Girls' club work throughout this vicinity.

Clubs to Be Fostered. IMBLER, Or., Oct. 20.—(Special.)—As soon as the apple crop is harvested the trustees of the local public schools plan to give encouragement to the Boys' and Girls' club work throughout this vicinity.

RECOMMENDATIONS SLATED TO BE MADE SOON.

Operating Department to Consider Portland's Application for Use of "502" Type.

THE OREGONIAN NEWS BUREAU, Washington, D. C., Oct. 20.—Portland's application for the assignment of the 502 type to that port is one of three propositions pending before the shipping board for the use of these ships, it was said by an official of the board today.

One proposal contemplates putting the ships into the Pacific coast service in favor of the strike and using these two vessels and one other and operating them between three major ports of the Pacific.

Other proposals during the last few days have been to the effect the shipping board has assigned to the "502" ships of the Pacific coast service the President Harrison, to the Los Angeles Steamship company to replace the ship which was damaged by fire at sea last week.

The foreign trade bureau has gone on record in favor of the shipping board's plan to have the ships handled from one office instead of having more than one district as at present. It is felt that the division of labor will be better.

Obituary. William Scott. MRS. M. N. TUCKER OF CARLETON. MRS. TUCKER, widow of the late William Scott, died at her home in Carleton, B. C., Oct. 19, 1922.

Pacific Coast Shipping Notes. ASTORIA, Or., Oct. 20.—(Special.)—The steamer Helen, owned by the Pacific Coast Steamship Co., arrived at 7:30 this morning from San Francisco and after loading 20,000 feet of lumber for export to Seattle, left for Portland.

Movements of Vessels. PORTLAND, Oct. 20.—Arrived at 12:30 A. M. L. Purissima, from San Francisco, at 10 P. M. Rose City, from San Francisco, at 10 P. M. Makawai, from Seattle, at 8 P. M. Fremont, from Kalama, for San Francisco.

CRISTOBAL, Oct. 17.—Sailed—Japan Mail, for Manila, from Portland, at 10 P. M. The ship is carrying 100 tons of lumber for export to Manila.

QUEENSTOWN, Oct. 20.—Arrived—Norwegian steamer Diota, from Portland, leaving four inches an hour in forepeak. The ship is carrying 100 tons of lumber for export to Queenstown.

SEATTLE, Wash., Oct. 20.—Arrived. The steamer Neahem, arrived yesterday at 7 P. M. from Victoria. The steamer Neahem, arrived yesterday at 7 P. M. from Victoria.

TACOMA, Wash., Oct. 20.—Indications are for a big movement in ships here tomorrow. The steamer Neahem, arrived yesterday at 7 P. M. from Victoria.

BELLINGHAM, Wash., Oct. 20.—Arrived. The steamer Neahem, arrived yesterday at 7 P. M. from Victoria. The steamer Neahem, arrived yesterday at 7 P. M. from Victoria.

ROCHE HARBOUR, Wash., Oct. 20.—Arrived. The steamer Neahem, arrived yesterday at 7 P. M. from Victoria. The steamer Neahem, arrived yesterday at 7 P. M. from Victoria.

MARINE NOTES. R. D. Hart of the headquarters staff of the seventeen light-house district is expected to arrive in Portland today on the steamer Neahem.

ARRESTS OF I. W. W. PROTESTED. NEW YORK, Oct. 20.—(Special.)—The following telegram was sent to Mayor Baker, of Portland, today by the American Civil Liberties union:

Situation Explained. In order that the public may be fully advised as to the part organized labor has played in the situation, it is explained that the I. W. W. has been established in Portland, Oregon, and is now active in the city.

Tides at Astoria, Saturday. High, 1:07 A. M.; 1:11 P. M.; 1:15 P. M.; 1:19 P. M.; 1:23 P. M.; 1:27 P. M.; 1:31 P. M.; 1:35 P. M.

BOY SCOUTS ORGANIZING

Indications Are That Lebanon Will Have Strong Troop.

LEBANON, Or., Oct. 20.—(Special.)—Indications are that Lebanon will have a strong troop of Boy Scouts, Business and professional men are backing the movement here.

Practitioner Loses License. OLYMPIA, Wash., Oct. 20.—(Special.)—For sending obscene writings through the mails in a letter to Miss Fay Huston of Wapato, to which charge he pleaded guilty before the federal court for the eastern district of Washington, Dr. Wm. E. Zwickler, a licensed practitioner of Yakima, was deprived of his license by the state trial committee of druggists practicing here today.

BOY SCOUTS ORGANIZING. Indications Are That Lebanon Will Have Strong Troop. LEBANON, Or., Oct. 20.—(Special.)—Indications are that Lebanon will have a strong troop of Boy Scouts, Business and professional men are backing the movement here.

Practitioner Loses License. OLYMPIA, Wash., Oct. 20.—(Special.)—For sending obscene writings through the mails in a letter to Miss Fay Huston of Wapato, to which charge he pleaded guilty before the federal court for the eastern district of Washington, Dr. Wm. E. Zwickler, a licensed practitioner of Yakima, was deprived of his license by the state trial committee of druggists practicing here today.

BOY SCOUTS ORGANIZING. Indications Are That Lebanon Will Have Strong Troop. LEBANON, Or., Oct. 20.—(Special.)—Indications are that Lebanon will have a strong troop of Boy Scouts, Business and professional men are backing the movement here.

Practitioner Loses License. OLYMPIA, Wash., Oct. 20.—(Special.)—For sending obscene writings through the mails in a letter to Miss Fay Huston of Wapato, to which charge he pleaded guilty before the federal court for the eastern district of Washington, Dr. Wm. E. Zwickler, a licensed practitioner of Yakima, was deprived of his license by the state trial committee of druggists practicing here today.

BOY SCOUTS ORGANIZING. Indications Are That Lebanon Will Have Strong Troop. LEBANON, Or., Oct. 20.—(Special.)—Indications are that Lebanon will have a strong troop of Boy Scouts, Business and professional men are backing the movement here.

Practitioner Loses License. OLYMPIA, Wash., Oct. 20.—(Special.)—For sending obscene writings through the mails in a letter to Miss Fay Huston of Wapato, to which charge he pleaded guilty before the federal court for the eastern district of Washington, Dr. Wm. E. Zwickler, a licensed practitioner of Yakima, was deprived of his license by the state trial committee of druggists practicing here today.

BOY SCOUTS ORGANIZING. Indications Are That Lebanon Will Have Strong Troop. LEBANON, Or., Oct. 20.—(Special.)—Indications are that Lebanon will have a strong troop of Boy Scouts, Business and professional men are backing the movement here.

Practitioner Loses License. OLYMPIA, Wash., Oct. 20.—(Special.)—For sending obscene writings through the mails in a letter to Miss Fay Huston of Wapato, to which charge he pleaded guilty before the federal court for the eastern district of Washington, Dr. Wm. E. Zwickler, a licensed practitioner of Yakima, was deprived of his license by the state trial committee of druggists practicing here today.

BOY SCOUTS ORGANIZING. Indications Are That Lebanon Will Have Strong Troop. LEBANON, Or., Oct. 20.—(Special.)—Indications are that Lebanon will have a strong troop of Boy Scouts, Business and professional men are backing the movement here.

Practitioner Loses License. OLYMPIA, Wash., Oct. 20.—(Special.)—For sending obscene writings through the mails in a letter to Miss Fay Huston of Wapato, to which charge he pleaded guilty before the federal court for the eastern district of Washington, Dr. Wm. E. Zwickler, a licensed practitioner of Yakima, was deprived of his license by the state trial committee of druggists practicing here today.

BOY SCOUTS ORGANIZING. Indications Are That Lebanon Will Have Strong Troop. LEBANON, Or., Oct. 20.—(Special.)—Indications are that Lebanon will have a strong troop of Boy Scouts, Business and professional men are backing the movement here.

Practitioner Loses License. OLYMPIA, Wash., Oct. 20.—(Special.)—For sending obscene writings through the mails in a letter to Miss Fay Huston of Wapato, to which charge he pleaded guilty before the federal court for the eastern district of Washington, Dr. Wm. E. Zwickler, a licensed practitioner of Yakima, was deprived of his license by the state trial committee of druggists practicing here today.

BOY SCOUTS ORGANIZING. Indications Are That Lebanon Will Have Strong Troop. LEBANON, Or., Oct. 20.—(Special.)—Indications are that Lebanon will have a strong troop of Boy Scouts, Business and professional men are backing the movement here.

477 TONS OF CARGO; LABOR IS PLENTIFUL

Surplus at Neutral Hall Is Reported. With its report that 477 men were at work handling cargo on vessels, while there was a surplus standing by at the neutral hall, the Waterfront Employers' union asserted last night that the day's payroll was higher than the average for that time of the year.

Grain Handlers' Action in Joining With Strikers Affects Loading of Wheat. The action of grain handlers in joining with the men on strike is felt in the loading of wheat, but in general cargo and lumber work it is declared by the employers that there was no slowing of dispatch now.

Grain Handlers' Action in Joining With Strikers Affects Loading of Wheat. The action of grain handlers in joining with the men on strike is felt in the loading of wheat, but in general cargo and lumber work it is declared by the employers that there was no slowing of dispatch now.

Grain Handlers' Action in Joining With Strikers Affects Loading of Wheat. The action of grain handlers in joining with the men on strike is felt in the loading of wheat, but in general cargo and lumber work it is declared by the employers that there was no slowing of dispatch now.

Grain Handlers' Action in Joining With Strikers Affects Loading of Wheat. The action of grain handlers in joining with the men on strike is felt in the loading of wheat, but in general cargo and lumber work it is declared by the employers that there was no slowing of dispatch now.

Grain Handlers' Action in Joining With Strikers Affects Loading of Wheat. The action of grain handlers in joining with the men on strike is felt in the loading of wheat, but in general cargo and lumber work it is declared by the employers that there was no slowing of dispatch now.

Grain Handlers' Action in Joining With Strikers Affects Loading of Wheat. The action of grain handlers in joining with the men on strike is felt in the loading of wheat, but in general cargo and lumber work it is declared by the employers that there was no slowing of dispatch now.

Grain Handlers' Action in Joining With Strikers Affects Loading of Wheat. The action of grain handlers in joining with the men on strike is felt in the loading of wheat, but in general cargo and lumber work it is declared by the employers that there was no slowing of dispatch now.

Grain Handlers' Action in Joining With Strikers Affects Loading of Wheat. The action of grain handlers in joining with the men on strike is felt in the loading of wheat, but in general cargo and lumber work it is declared by the employers that there was no slowing of dispatch now.

Grain Handlers' Action in Joining With Strikers Affects Loading of Wheat. The action of grain handlers in joining with the men on strike is felt in the loading of wheat, but in general cargo and lumber work it is declared by the employers that there was no slowing of dispatch now.

Grain Handlers' Action in Joining With Strikers Affects Loading of Wheat. The action of grain handlers in joining with the men on strike is felt in the loading of wheat, but in general cargo and lumber work it is declared by the employers that there was no slowing of dispatch now.

Grain Handlers' Action in Joining With Strikers Affects Loading of Wheat. The action of grain handlers in joining with the men on strike is felt in the loading of wheat, but in general cargo and lumber work it is declared by the employers that there was no slowing of dispatch now.

Grain Handlers' Action in Joining With Strikers Affects Loading of Wheat. The action of grain handlers in joining with the men on strike is felt in the loading of wheat, but in general cargo and lumber work it is declared by the employers that there was no slowing of dispatch now.

Grain Handlers' Action in Joining With Strikers Affects Loading of Wheat. The action of grain handlers in joining with the men on strike is felt in the loading of wheat, but in general cargo and lumber work it is declared by the employers that there was no slowing of dispatch now.

Grain Handlers' Action in Joining With Strikers Affects Loading of Wheat. The action of grain handlers in joining with the men on strike is felt in the loading of wheat, but in general cargo and lumber work it is declared by the employers that there was no slowing of dispatch now.

Grain Handlers' Action in Joining With Strikers Affects Loading of Wheat. The action of grain handlers in joining with the men on strike is felt in the loading of wheat, but in general cargo and lumber work it is declared by the employers that there was no slowing of dispatch now.

FOR SALE

Steel Screw Tank Steamer "LYMAN STEWART". Tenders are requested for sale of wreck of steel screw tank steamer "LYMAN STEWART" as and when it is located.

Steel Screw Tank Steamer "LYMAN STEWART". Tenders are requested for sale of wreck of steel screw tank steamer "LYMAN STEWART" as and when it is located.

Steel Screw Tank Steamer "LYMAN STEWART". Tenders are requested for sale of wreck of steel screw tank steamer "LYMAN STEWART" as and when it is located.

Steel Screw Tank Steamer "LYMAN STEWART". Tenders are requested for sale of wreck of steel screw tank steamer "LYMAN STEWART" as and when it is located.

Steel Screw Tank Steamer "LYMAN STEWART". Tenders are requested for sale of wreck of steel screw tank steamer "LYMAN STEWART" as and when it is located.

Steel Screw Tank Steamer "LYMAN STEWART". Tenders are requested for sale of wreck of steel screw tank steamer "LYMAN STEWART" as and when it is located.

Steel Screw Tank Steamer "LYMAN STEWART". Tenders are requested for sale of wreck of steel screw tank steamer "LYMAN STEWART" as and when it is located.

Steel Screw Tank Steamer "LYMAN STEWART". Tenders are requested for sale of wreck of steel screw tank steamer "LYMAN STEWART" as and when it is located.

Steel Screw Tank Steamer "LYMAN STEWART". Tenders are requested for sale of wreck of steel screw tank steamer "LYMAN STEWART" as and when it is located.

Steel Screw Tank Steamer "LYMAN STEWART". Tenders are requested for sale of wreck of steel screw tank steamer "LYMAN STEWART" as and when it is located.

Steel Screw Tank Steamer "LYMAN STEWART". Tenders are requested for sale of wreck of steel screw tank steamer "LYMAN STEWART" as and when it is located.

Steel Screw Tank Steamer "LYMAN STEWART". Tenders are requested for sale of wreck of steel screw tank steamer "LYMAN STEWART" as and when it is located.

Steel Screw Tank Steamer "LYMAN STEWART". Tenders are requested for sale of wreck of steel screw tank steamer "LYMAN STEWART" as and when it is located.

Steel Screw Tank Steamer "LYMAN STEWART". Tenders are requested for sale of wreck of steel screw tank steamer "LYMAN STEWART" as and when it is located.

Steel Screw Tank Steamer "LYMAN STEWART". Tenders are requested for sale of wreck of steel screw tank steamer "LYMAN STEWART" as and when it is located.

Steel Screw Tank Steamer "LYMAN STEWART". Tenders are requested for sale of wreck of steel screw tank steamer "LYMAN STEWART" as and when it is located.

PHILADELPHIA, Pa., Oct. 19.—(Special.)—The steamer Neahem, arrived yesterday at 7 P. M. from Victoria. The steamer Neahem, arrived yesterday at 7 P. M. from Victoria.

PHILADELPHIA, Pa., Oct. 19.—(Special.)—The steamer Neahem, arrived yesterday at 7 P. M. from Victoria. The steamer Neahem, arrived yesterday at 7 P. M. from Victoria.

PHILADELPHIA, Pa., Oct. 19.—(Special.)—The steamer Neahem, arrived yesterday at 7 P. M. from Victoria. The steamer Neahem, arrived yesterday at 7 P. M. from Victoria.

PHILADELPHIA, Pa., Oct. 19.—(Special.)—The steamer Neahem, arrived yesterday at 7 P. M. from Victoria. The steamer Neahem, arrived yesterday at 7 P. M. from Victoria.

PHILADELPHIA, Pa., Oct. 19.—(Special.)—The steamer Neahem, arrived yesterday at 7 P. M. from Victoria. The steamer Neahem, arrived yesterday at 7 P. M. from Victoria.

PHILADELPHIA, Pa., Oct. 19.—(Special.)—The steamer Neahem, arrived yesterday at 7 P. M. from Victoria. The steamer Neahem, arrived yesterday at 7 P. M. from Victoria.

PHILADELPHIA, Pa., Oct. 19.—(Special.)—The steamer Neahem, arrived yesterday at 7 P. M. from Victoria. The steamer Neahem, arrived yesterday at 7 P. M. from Victoria.

PHILADELPHIA, Pa., Oct. 19.—(Special.)—The steamer Neahem, arrived yesterday at 7 P. M. from Victoria. The steamer Neahem, arrived yesterday at 7 P. M. from Victoria.

PHILADELPHIA, Pa., Oct. 19.—(Special.)—The steamer Neahem, arrived yesterday at 7 P. M. from Victoria. The steamer Neahem, arrived yesterday at 7 P. M. from Victoria.

PHILADELPHIA, Pa., Oct. 19.—(Special.)—The steamer Neahem, arrived yesterday at 7 P. M. from Victoria. The steamer Neahem, arrived yesterday at 7 P. M. from Victoria.

PHILADELPHIA, Pa., Oct. 19.—(Special.)—The steamer Neahem, arrived yesterday at 7 P. M. from Victoria. The steamer Neahem, arrived yesterday at 7 P. M. from Victoria.

PHILADELPHIA, Pa., Oct. 19.—(Special.)—The steamer Neahem, arrived yesterday at 7 P. M. from Victoria. The steamer Neahem, arrived yesterday at 7 P. M. from Victoria.

PHILADELPHIA, Pa., Oct. 19.—(Special.)—The steamer Neahem, arrived yesterday at 7 P. M. from Victoria. The steamer Neahem, arrived yesterday at 7 P. M. from Victoria.

PHILADELPHIA, Pa., Oct. 19.—(Special.)—The steamer Neahem, arrived yesterday at 7 P. M. from Victoria. The steamer Neahem, arrived yesterday at 7 P. M. from Victoria.

PHILADELPHIA, Pa., Oct. 19.—(Special.)—The steamer Neahem, arrived yesterday at 7 P. M. from Victoria. The steamer Neahem, arrived yesterday at 7 P. M. from Victoria.

PHILADELPHIA, Pa., Oct. 19.—(Special.)—The steamer Neahem, arrived yesterday at 7 P. M. from Victoria. The steamer Neahem, arrived yesterday at 7 P. M. from Victoria.