

PROBES ARE BEGUN INTO RIVER WRECK

Report of Two Columbia Pilots Is Awaited.

TRIALS ARE POSSIBLE

Special Police Officer Reports That Welsh Prince's Steering Gear Crippled at Start.

Investigation into the collision between the steamers Iowan and Welsh Prince in the Columbia river near Astoria, Wash., Sunday night, resulting in the sinking of the latter and the death of seven seamen, were begun at once by different groups of officials and were in progress at the scene of the wreck yesterday.

Underwriters Make Inquiry. Captain W. E. McNaught is making an inquiry for the San Francisco board of marine underwriters and the steamship companies operating the two boats have representatives making an inquiry into the facts.

Survey of River Ordered. In order to determine whether conditions of the river channel were at all at fault, the United States corps of engineers directed Major Richard Park and a survey crew to conduct an inquiry of its own.

What's Become of... REV. BENJAMIN YOUNG, ex-pastor of the Old Taylor Street Methodist-Episcopal church in this city?

LAST BODIES ARE REMOVED Estimate of Salvaging Cargo and Repairing Ship Is \$300,000.

ASTORIA, Or., May 30.—(Special.)—The bodies of C. M. Jensen and Joel Buckwalter were recovered today from the wreck of the British steamer Welsh Prince.

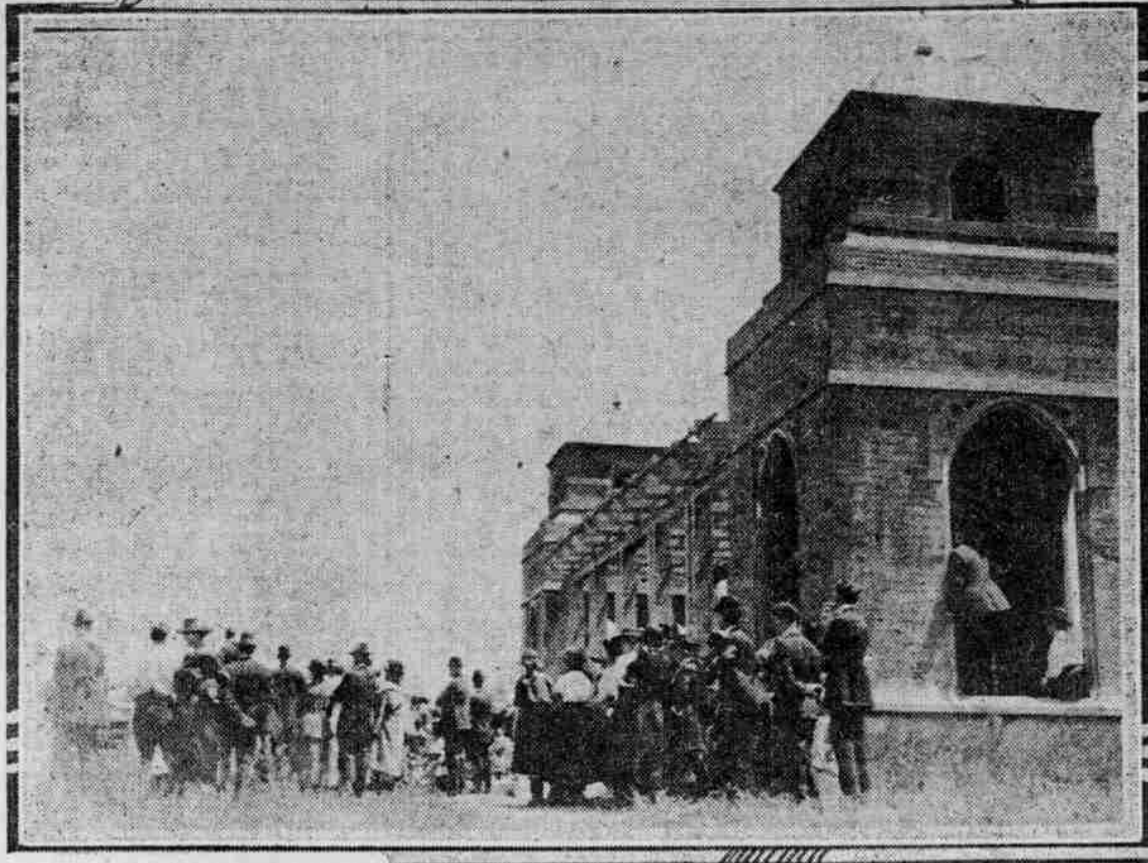
FAITH IS HELD COSTLY Witnesses Against Cox Say Investments Are Valuable.

IOWAN NOT TO WAIT LONG Steamer to Be Drydocked Today for Survey of Damage.

GRADUATION IS FRIDAY Oregon City Pupils to Have Class Day Programme Tomorrow.

Two Pioneer Women Die. WALLA WALLA, Wash., May 30.—(Special.)—Two pioneer women of Walla Walla died today.

SOLDIERS, SAILORS AND MARINES GATHER TO DEDICATE PLOT AT MOUNT SCOTT CEMETERY.



BURIAL PLOT DEDICATED

VETERANS ACQUIRE SPACE IN MOUNT SCOTT CEMETERY.

Three Large Flags Are Donated to ex-Soldiers and Raised Over Pergola.

A solemn, sacred hour marked the formal dedication of the Veterans' plot in Mount Scott cemetery yesterday morning.

Underwriters Make Inquiry. Captain W. E. McNaught is making an inquiry for the San Francisco board of marine underwriters and the steamship companies operating the two boats have representatives making an inquiry into the facts.

Survey of River Ordered. In order to determine whether conditions of the river channel were at all at fault, the United States corps of engineers directed Major Richard Park and a survey crew to conduct an inquiry of its own.

What's Become of... REV. BENJAMIN YOUNG, ex-pastor of the Old Taylor Street Methodist-Episcopal church in this city?

LAST BODIES ARE REMOVED Estimate of Salvaging Cargo and Repairing Ship Is \$300,000.

FAITH IS HELD COSTLY Witnesses Against Cox Say Investments Are Valuable.

IOWAN NOT TO WAIT LONG Steamer to Be Drydocked Today for Survey of Damage.

GRADUATION IS FRIDAY Oregon City Pupils to Have Class Day Programme Tomorrow.

Two Pioneer Women Die. WALLA WALLA, Wash., May 30.—(Special.)—Two pioneer women of Walla Walla died today.

Two Pioneer Women Die. WALLA WALLA, Wash., May 30.—(Special.)—Two pioneer women of Walla Walla died today.



Upper—View of memorial erected on soldiers' plot. Lower—View of flags of two nations rising at ceremony yesterday.

HALL CONSULTS FRIENDS

CONTEST FOR GUBERNATORIAL NOMINATION POSSIBLE.

Recent Aspirant for Republican Honor Refuses to Present to Divulge Intentions.

Charles Hall, recent aspirant for the republican nomination for governor, is holding conferences in Portland to determine whether to accept the result of the primaries or contest the nomination of Governor Olcott.

one way or the other, he will issue a statement, and not before.

With the official count showing that Mr. Olcott defeated him by more than 500 votes, Mr. Hall is trying to make up his mind whether to contest his successful opponent or claim irregularities justifying a contest.

UNION MEN WANTED FOR U. S. VESSELS

Waterfront Employers Yield to Federal Ultimatum.

REPLY IS TELEGRAPHED

Washington, D. C., Is Notified That Portland Stevedore Companies Have Given Up Point.

Union longshoremen may handle cargo on shipping board vessels at Portland, it was announced yesterday, the Waterfront Employers' union being ready to meet the demand of the government to that extent.

Nonunion Men Get Jobs. Yet nonunion men, plus such others as may elect to hire through the employers' hall, will be given longshore work on all other carriers.

Officials Are Absent. Executives of the Waterfront Employers' union were not available in customary channels yesterday.

Germany's Debt Increased. BERLIN, May 30.—Germany's floating debt was increased from April 1 to May 20 to 13,750,000,000 marks, and now totals 235,950,000,000 marks.

Excursion Fares East Lower than Ever This Summer Round-trip tickets routed over the Union Pacific System returning same or any direct line

Table with 2 columns: City and Fare. Salt Lake City \$48.52, St. Louis \$81.50, Denver \$4.00, Cincinnati \$108.30, Kansas City \$2.00, Philadelphia \$144.95, Omaha \$24.00, New York \$174.00, Chicago \$8.00, Boston \$158.35.

Tickets on Sale Today and DAILY THRU August 31 Return Limit October 31

THROUGH SERVICE Oregon-Washington Limited 9:00 A. M. Continental Limited 5:00 P. M.

IMPORTANT FACTS—The Union Pacific operates the ONLY THROUGH SOLID TRAIN between Portland and Chicago. Every foot of track is protected by AUTOMATIC SAFETY SIGNALS.

NAWSCO INTERCOASTAL FREIGHT SERVICE. Between Portland, Me., Boston, New York, Philadelphia, Baltimore, Charleston, and San Diego, Los Angeles, San Francisco, Portland, Seattle, Vancouver, B. C.

before the strike on the extra list at the longshoremen's hall, it was said 25 of them reported for employment yesterday and that for several days small numbers of them had been sent to various jobs on the front.

Work Ready Now. Should there be no delay as to the shipping board's acquiescence on the offer to employ union men, work can be started at once, as there are two ships here of the trans-Pacific fleet, the Eastern Sailor being ready to load lumber at Inman-Boulton's and the Vinita discharging coals at the plant of the Portland Vegetable Oil Mills.

Five Climb Mt. Adams PEAK SCALED FOR FIRST TIME THIS SEASON BY PARTY.

Trails Club Members Encounter Unusual Amount of Snow in Making Ascent.

Five members of a Trails club party had the honor of being first to scale Mt. Adams this season, the feat having been accomplished on Monday.

Three Held for Robbery. VANCOUVER, B. C., May 30.—Charged with complicity in the daylight robbery of a branch of the Royal Bank near here May 15, Harry Blackburn, Clarence Miller and Eddie Thomas were today committed for trial.

Germany's Debt Increased. BERLIN, May 30.—Germany's floating debt was increased from April 1 to May 20 to 13,750,000,000 marks, and now totals 235,950,000,000 marks.

You Can Know About Concrete—Don't Guess. Whatever use of Concrete you are planning, the Portland Cement Association can, and will gladly, give you absolutely dependable information about it.

This Association is the joint research and educational foundation of 85 manufacturers of cement in the United States, Canada, Mexico, and Cuba. It has been carrying on this work for twenty years.

To keep its information as full and serviceable as possible, and to make it readily available, the Association maintains these agencies:

A research laboratory, making many thousands of tests each year. Many specialists in the different classes of Concrete work, who divide their time between studies in the field, personal counsel to users of Concrete, and the preparation of booklets of information on the many uses of Concrete.

So no one need ever be in doubt as to when or how to use Concrete. All of the Association's facilities are at the service of the public without charge. Suggestions as to how they may be made more useful to you are invited.

PORTLAND CEMENT ASSOCIATION. A National Organization to Improve and Extend the Uses of Concrete. Atlanta, Boston, Chicago, Dallas, Denver, Des Moines, Detroit, Helena, Indianapolis, Kansas City, Los Angeles, Milwaukee, Minneapolis, New York, Philadelphia, Pittsburgh, Portland, Ore., Salt Lake City, San Francisco, Seattle, St. Louis, Vancouver, B.C., Washington, D.C.

Weinhard's R-Porter. The Bottled Flavor of Ripe Raspberries. Every drop brings zest to the thirsty. Wherever good drinks are sold. 5c A Bottle. HENRY WEINHARD PLANT, Portland, Oregon.

French Line. N. Y.-Plymouth-Havre-Paris. FRANCE: May 31, June 28, July 26, Aug. 23. NEW YORK-HAVRE-PARIS: June 1, July 6, Aug. 1, Sept. 1.

AUSTRALIA. NEW ZEALAND AND SOUTH SEAS. Via Tahiti and Raratonga. Mail and passenger service from San Francisco every 28 days.

ADMIRAL LINE. Meals and Berth Included. "SENATOR". Sails from Municipal Dock No. 3 Saturday, June 4, 4 P. M.

OREGON HUMANE SOCIETY. Investigates all cases of alleged cruelty to animals. Office, room 1515 Courthouse, Phone Main 378 from 8 A. M. to 5 P. M.