

CALIFORNIA SWEEP BY SNOW AND RAIN

Storm From Pacific Hits Los Angeles Country.

COAST SHIPPING MENACED

Three Steamers on Steamer Yale Stove In by Big Wave in San Pedro Harbor.

WINTER STAFFS NEW DRIVE ON NORTHWEST

The following are some of the weather conditions reported throughout the northwest and in California yesterday: ... Hood River, cold and snowing; Eugene, snow; Los Angeles, Cal., snow, hail, rain; San Bernardino, Cal., snow and cold; Sacramento, Cal., cold rain and snow; Stockton, Cal., snow; Riverside, Cal., snow; San Jose, Cal., snow.

SAN FRANCISCO, Jan. 29.—Rain and snow were general throughout California today and present cold weather is likely to continue tomorrow, according to the weather bureau. In the southern section there were strong winds, Los Angeles experiencing a 24-mile gale and at San Diego the velocity reached 42 miles an hour.

The steamer Yale was damaged in San Pedro harbor, three steamers being stove in by a big wave. At Honolua, a total of two feet was reported and Vallejo was blanketed with three inches. In Berkeley one part of the University of California campus was covered with snow and the foothills and Mount Tamalpais were white.

San Francisco experienced a snow-rain, flakes coming down but melting as they touched the ground. Today snowfall in the San Francisco region, according to records, was the first of any consequence since December 29, 1915. The weather bureau reported that snow fell in the early morning hours throughout the north central and northern parts of the state, from Red Bluff to the Oregon line, and varied in depth from two to four inches.

Storm Has Energy. The storm is of considerable energy and is central near the middle of the California coast, and a large high-pressure area over the Canadian northwest, according to the weather bureau. Continued cold rains in western Oregon and snow in Nevada and possibly in eastern Oregon was the forecast. Washington's forecast was fair and continued cold.

Rainfall during the last 24 hours in California was heaviest at Los Angeles and San Luis Obispo. Modesto was mentioned in white as the result of a steady rain during the three hours in the morning. Snow-battle in the downtown streets was the order of the day, with a drizzle of rain followed later. The snowfall was two inches and east-easterly here said the flakes were the largest they had ever seen, some being an inch in diameter. A similar snowfall occurred here January 1, 1916.

Redding Gets Snow. Four inches of snow fell in Redding early today and in other sections of northern Shasta county a light fall was reported. In the northern and mountainous sections of the county the fall was considerably heavier.

SNOW FALLS IN LOS ANGELES Heavy Gale From Pacific Stirs Up San Pedro Harbor.

LOS ANGELES, Cal., Jan. 29.—Snow flurries of large flakes, also hail and heavy rain, fell in Los Angeles today in a sudden storm coming out of the Pacific. The fall was sufficient in the city to bank up an inch or more between houses, where it remained on the ground several hours. It was quite general through the valleys near Los Angeles and at Mount Wilson, above Pasadena, 12 inches of snow was reported.

Low temperatures and the residential call for heat proved a heavy drain on the city gas supply, with a resultant low pressure and numerous complaints throughout Los Angeles. The storm averaged close to two inches of rain in the 24 hours in the district in and around Los Angeles.

Heavy seas menaced shipping at San Pedro and the steamer Yale, arriving there from San Francisco in the morning, was struck by a big wave while turning in around the breakwater and three steamers on the upper deck were stove in.

24 ABOVE ZERO IS RECORDED East Wind Brings Cold Snap Back to Portland.

A cold east wind sweeping down the Columbia from the eastern Oregon snow fields brought Portland another touch of freezing weather early yesterday. The weather bureau thermometer, which registered 25 degrees at 5 A. M., fell during the next two hours and a half to 24 degrees.

The east wind, continuing throughout the day, kept a winter temperature wherever it found a full sweep. The sunshine, however, brought the temperature up to 35 for the greater part of the day. At 5 P. M. it had fallen to 34 degrees, with a drop of another degree during the next half hour.

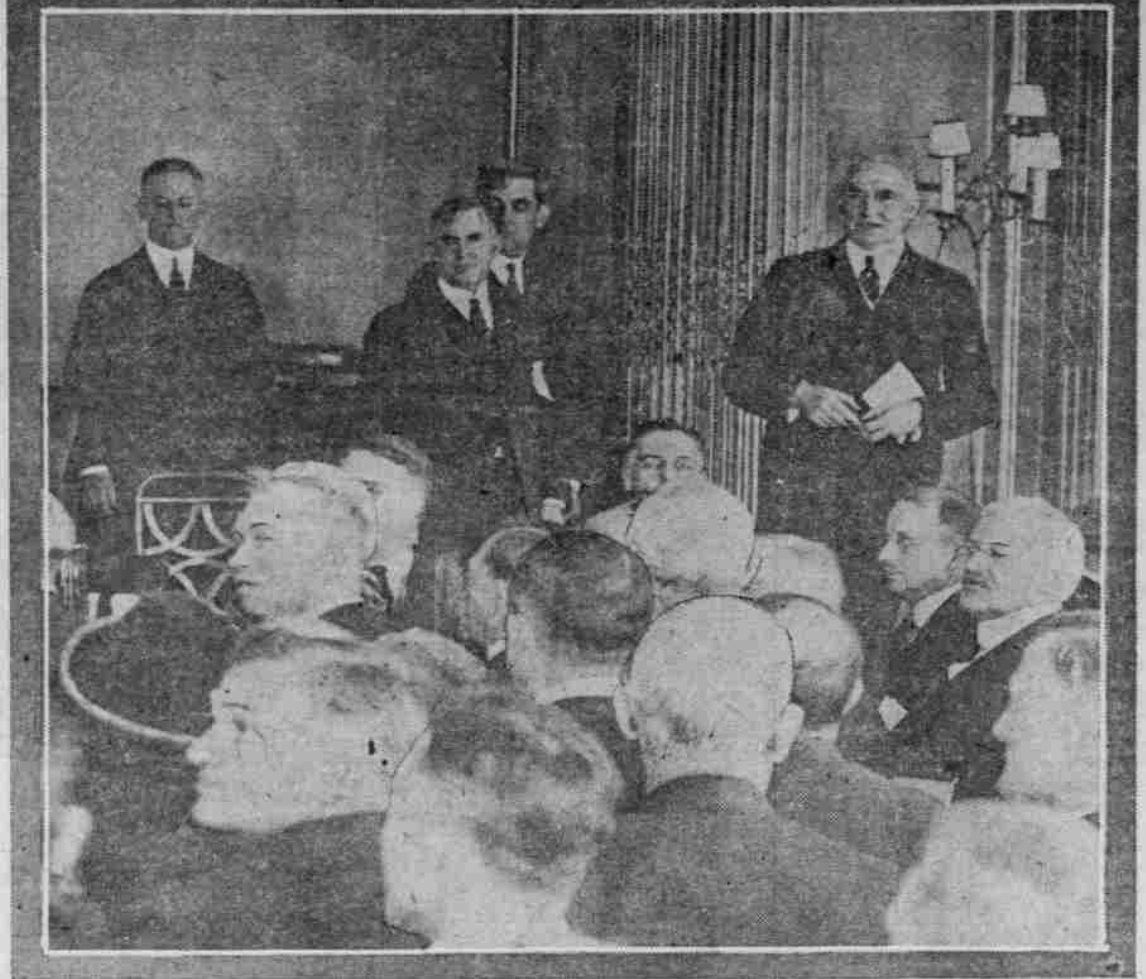
The cold temperature came too late in the morning to cause much ice, except a surface glaze on pavements and a heavy frost upon roofs and lawns. Private thermometers recorded temperatures below 20 in some parts of the city.

A low-pressure area to the south, with heavy rainfall along the California coast, indicated little danger of a prolonged cold spell, or a very low drop in temperature, according to E. L. Wells, weather observer.

HOOD RIVER IS COLD AGAIN 10.33 Feet of Snow Said to Have Fallen This Winter.

HOOD RIVER, Or., Jan. 29.—(Special) The respite from winter was brief over the mid-Columbia with a temperature slightly above freezing and a disagreeable east wind prevailing. Snow has fallen throughout the day, the new blanket reaching a depth of four inches in the upper valley. This was the beginning of the 11th

PRESIDENT OPENS FARMERS' CONFERENCE.



President Harding opened the national agricultural conference called into being by the department of agriculture. Three hundred delegates, representative farmers and agriculturalists from all parts of the country gathered at Washington to discuss the serious situation facing agricultural interests of the country.

MR. HARDING ADDRESSING OPENING SESSION. President Harding opened the national agricultural conference called into being by the department of agriculture. Three hundred delegates, representative farmers and agriculturalists from all parts of the country gathered at Washington to discuss the serious situation facing agricultural interests of the country.

week of east wind, unbroken except for four days of thaw. The heaviest snow in 30 years fell over San Bernardino city and valley today. The snow measured from 1 to 3 inches in depth. The temperature did not rise over 37 degrees and hundreds of people participated in a snow frolic. The snow was still in the streets and on roofs tonight. The storm was general throughout San Bernardino and Riverside counties and the snow clung to trees, an unusual sight. A foot of snow at Devore has halted automobile travel through Cannon pass. Weather records here show 12 inches of snow fell on January 15, 1882, and an inch of snow December 23, 1915. On seven other occasions in 30 years there was light snow.

Snow Falls at Stockton. STOCKTON, Cal., Jan. 29.—Following a light rain, snow began to fall about 7 o'clock this morning, continuing until about noon and thoroughly covering the ground. About 1 o'clock there was another fall, this time the flakes coming down more heavily and continuing until about 2:30, when a light rain began to fall, turning the snow into slush. The youngsters made the most of it, and as a result snow men were to be seen decorating the front lawns of many of the residences. This is the first snow storm in Stockton since January 1, 1916. It was estimated that the fall measured about 2 1/2 inches.

Rain at Fresno. FRESNO, Cal., Jan. 29.—Rainfall totaling 1.4 of an inch fell here today, stopping at midnight. Turlock and Newman, situated about 80 miles north of this city, were visited with snow early this morning, according to reports reaching here. Madera, 20 miles north, reported 4 1/2 of an inch, and Dinuba, 20 miles south, one-half inch of rain.

San Diego Reports Rain. SAN DIEGO, Cal., Jan. 29.—With a velocity of 42 miles an hour, the heaviest wind recorded here in five years swept the city today. Rainfall during the afternoon totaled 35 of an inch, bringing the seasonal total to 3.50 inches more than normal. Snow fell 50 miles east of the city. No storm damage was reported.

Eugene Reports Snow. EUGENE, Or., Jan. 29.—(Special)—Two inches of snow fell in Eugene early this morning, but about half of it has melted off. The mountainous districts report almost a continual snowfall for two or three days, and on high elevations in the Cascades it is several feet deep.

San Jose Has Snow. SAN JOSE, Cal., Jan. 29.—Snow fell continually today on the mountains and hills surrounding the city and in many instances points unvisited by snow for years were blanketed in white. Rain fell intermittently over the floor of the valley.

Storm Hits Sacramento. SACRAMENTO, Cal., Jan. 29.—Cold rain, accompanied by a few flakes of snow and sleet, fell here throughout the day. At Galt, 15 miles south, it was reported the ground was covered with snow. Heavy rain with some sleet was reported in a number of towns north.

Ground White at Riverside. RIVERSIDE, Cal., Jan. 29.—Snow sufficient to whiten the ground fell in the district between Riverside and Perris, 18 miles east of here, today. The snowfall in Riverside was light.

Turlock Has Snow. TURLOCK, Cal., Jan. 29.—One inch of snow, the first in six years, fell in this section early today but melted within a few hours.

SUICIDE PLAY IS FATAL Several Cylinders Unloaded, But Weapon Is Discharged.

OAKLAND, Cal., Jan. 29.—As two 14-year-old high school boys, chums, toyed with a loaded revolver here last night they laughingly discussed suicide and one of them, Hollis Clarke, unloading several of the cylinders, remarked, "this is the way they do it." He held the weapon against his temple, there was a click, then a report and Clarke fell dead, his friend, Harvey Britting, said.

Being said, Clarke evidently thought he had unloaded the two cylinders nearest the barrel and pulled the trigger in fun.

Building Men Are Feted Chehalis Electrical Contractors and Dealers Entertain.

CHEHALIS, Wash., Jan. 29.—(Special)—Electrical contractors and dealers of Chehalis and Centralia were hosts last night at a banquet given at the Hotel St. Helens. Their guests were lumbermen, realty men, architects, building contractors and

BOAT SINKS; PILOT LOST

L. H. JACKSON LOSES LIFE IN SAN PEDRO HARBOR.

Craft Capsizes in Storm and Rescuers From Battleship Arrive Too Late to Save Man.

SAN PEDRO, Cal., Jan. 29.—L. H. Jackson, of San Pedro harbor, was drowned off the breakwater here today when the pilot boat Hesper, of which he was in charge, capsized and sank in a heavy southwester. The sinking was observed by the battleship Tennessee and boats were dispatched to the scene, but no trace remained of the Hesper nor Jackson. Jackson went out to bring into the inner harbor the steamer Pacific, which, while off Point Loma, bound from San Diego to San Pedro, broke a tall shaft.

The destroyer Renshaw, bound from San Pedro to San Diego, picked up the Pacific and started to tow her into San Pedro. She wirelessed for a tug and 20 miles out of the harbor was met by the tug Cardinal. Captain George Hammar of the Pacific declined to permit the Cardinal to guide him into the harbor and cast anchor outside the breakwater. There he sent up signals for a tug pilot, which were mistaken by Jackson as signals of distress. It was believed the Pacific was brought into the harbor by the tug Bahada, while sailors of the Tennessee, in small boats, searched for Jackson and the Hesper. They found neither and tonight gave up the search. Jackson was said to be survived by a widow and two children.

OLD SKELETONS FOUND BONES 1000 YEARS OLD DISCOVERED IN CAVE.

Hatchets and Beads Indicate Remains Those of Indians; Scientists to Make Investigation.

BRISTOL, Va., Jan. 29.—(Special)—With the view of making a careful investigation of the cave near Benham, Va., in which about 800 human skeletons were discovered, Dr. Ales Hrdlicka, famous scientist of the Smithsonian institution, Washington, accompanied by Professor Henry Woodman of this city, who was the first to explore the cave, left here today for Benham, Va.

The heap of skeletons found in the cave is 32 feet high and about 48 feet in diameter at the base, according to the measurements made by Professor Woodman.

Entrance to the cave is provided by a narrow tunnel running straight down for about 20 feet to the top of the heap of bones. Experiments already made with skulls brought to Bristol indicate the skeletons were placed in the cavern nearly 1000 years ago. It is believed the bones were thrown into the cave by Indians who inhabited the section around Benham hundreds of years ago. As an evidence that the skeletons are those of Indians, two or three Indian hatchets and some beads were found in the cave. Until the investigation in the cave is completed curiosity seekers will not be allowed to enter.

ACTRESS IGNORES DEATH Trying Role Is Played While Husband's Body Is in Home.

NEW YORK, Jan. 29.—Effie Elliser played her trying role in one of New York's stage successes through two performances yesterday, though her husband, Frank Weston, retired actor or snooksparsan roles, lay dead in their home.

Mr. Weston, who was 72, died yesterday morning. News of his death was broken to his wife after the afternoon performance.

"There is no understudy to take my place," she said. "My husband would tell me to go on with my work."

The marriage of Miss Elliser and Mr. Weston was a stage romance of 30 years ago. Her father was a partner of Joseph Jefferson.

BUILDING MEN ARE FETED Chehalis Electrical Contractors and Dealers Entertain.

CHEHALIS, Wash., Jan. 29.—(Special)—Electrical contractors and dealers of Chehalis and Centralia were hosts last night at a banquet given at the Hotel St. Helens. Their guests were lumbermen, realty men, architects, building contractors and

STORM IN ATLANTIC PASSES OUT TO SEA

Effort Made to Resume Normal Activities.

CAR SERVICE IS HALTED

Washington's Streets Blocked With Snow and Many Buildings Are Endangered.

WASHINGTON, D. C., Jan. 29.—Buried under from one to more than two feet of snow by one of the most severe storms in several decades, the middle Atlantic section spent Sunday in efforts to resume activities suspended Friday night when the storm broke.

The storm, described by the weather bureau as the worst in 23 years, tonight had passed out to sea and its center was off the coast of the Virginian coast to some distance northeast of Bermuda.

Washington, as the center of the storm's strength, suffered the most severely—a toll of 100 lives having been taken and more than 100 injured. The loss of life here with one or two exceptions was due to the collapse of the roof of a motion picture theater under the weight of 26 inches of snow.

Street Car Service Stops. Daybreak today found the capital without street car service, its streets blocked with snow. Its suburbs cut off, deliveries of perishable foodstuffs curtailed and many buildings endangered by the load of snow. Sunday was spent in attempts to restore a semblance of normal conditions and though aided by favorable weather the city tonight still was in grip of the storm.

Several Porches Collapse. All portions here were that even with the favorable weather forecast would be days before normal conditions were restored. Many apartment houses and office buildings issued orders today for removal of the snow from the roofs.

New York Traffic Recovers. NEW YORK, Jan. 29.—New York had recovered quickly tonight from the interruption to its railroad schedule, particularly the Pennsylvania railroad's service to the south, resulting from an eight-inch snowfall.

Divorce Cases Decrease. TILLAMOOK, Or., Jan. 29.—(Special)—There are 82 cases on the bar docket for the February term of the circuit court, including 12 persons who have petitioned for naturalization papers. There appears to be a falling off in divorce cases, for there are only seven cases on the docket.

Diphtheria Case Found. ILLWACO, Wash., Jan. 29.—(Special)—Dr. Simpson of the state department of health has telegraphed Dr. Paul, local health officer, that the culture of Barbara McDevan shows diphtheria. The fourth-grade pupils will resume work tomorrow after a week's vacation. There are two cases of scarlet fever at Long Beach. There are now under observation by Dr. Paul and Miss Duncan, Red Cross school nurse

An epidemic of grippe exists here, accompanied in many cases by tonsillitis. The prestige of Oregonian Want-Ads has been attained not merely by the fact that all its readers are interested in Oregonian Want-Ads. Read The Oregonian classified ads.

Then, and Now Series. Another Step Forward. As we progress from year to year, and period to period in this resumé of events in the history of Ladd & Tilton Bank as it developed with Portland and the Pacific Northwest, we are impressed by the steady, unpausing nature of that development. Anticipating, with characteristic foresight, the era of great sectional prosperity which was predestined to follow on the heels of the Civil War, Ladd & Tilton, in the fall of 1864, moved the scene of their operations to more commodious quarters at the corner of Front and Stark Streets, in the building pictured above. In a Portland newspaper of that day, we read: "Moving Into New Quarters—Messrs. Ladd & Tilton have fitted up a new Banking Office in the building corner of Stark and Front streets, and commenced moving yesterday. The new quarters will be decidedly more convenient than their former location, dispensing with the ascent of a flight of stairs in the transaction of business. Thus did Ladd & Tilton, Bankers, demonstrate their faith in Portland's future,—faith which the passing years have not only served to justify but to strengthen, for today Ladd & Tilton is Portland's leading bank as it was Portland's first bank; ever progressive, always demonstrating its faith in the city and community,—willing and anxious to serve. LADD & TILTON BANK. Oldest in the Northwest. Washington at Third. FEDERAL RESERVE SYSTEM.

A REAL BARGAIN EVENT. Suits and Overcoats. \$17.50. Others \$22.50 and \$32.50. Portland's Red Letter Week. This is absolutely Portland's greatest bargain event for men in recent years. Here you will find real bargains in Men's SUITS and OVERCOATS that have not been available since pre-war days. Come and see for yourself. You will be convinced that the prices are back to 1914 levels. I bought these goods at sacrifice prices and I propose to give the men of Portland the benefit. They are wonderful values—plus style, quality and fit. Just the opportunity you have been wishing for. Come early. Jimmy Dunn. Broadway and Alder.