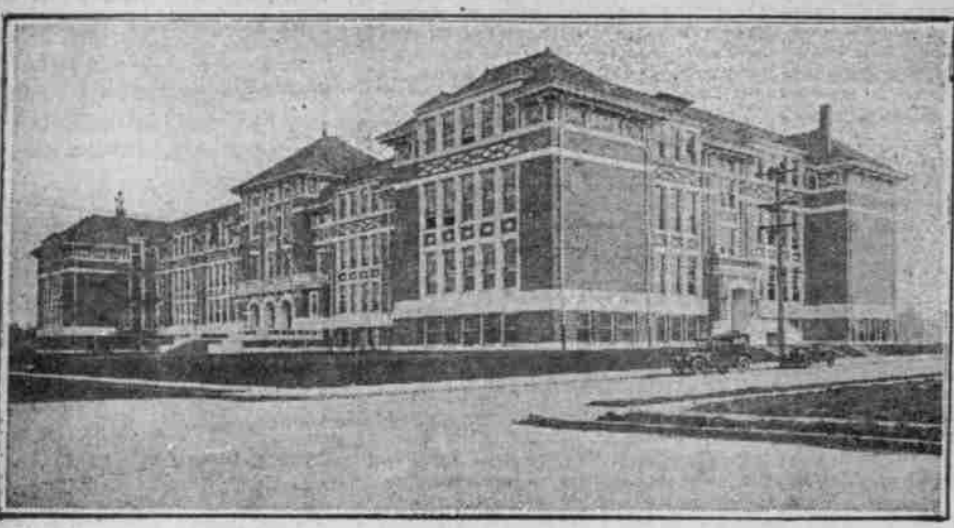


PORTLAND LEADS WHOLE UNITED STATES IN PERCENTAGE OF HIGH SCHOOL ENROLLMENT IN PROPORTION TO POPULATION AND SYSTEM'S GROWTH IS LARGE

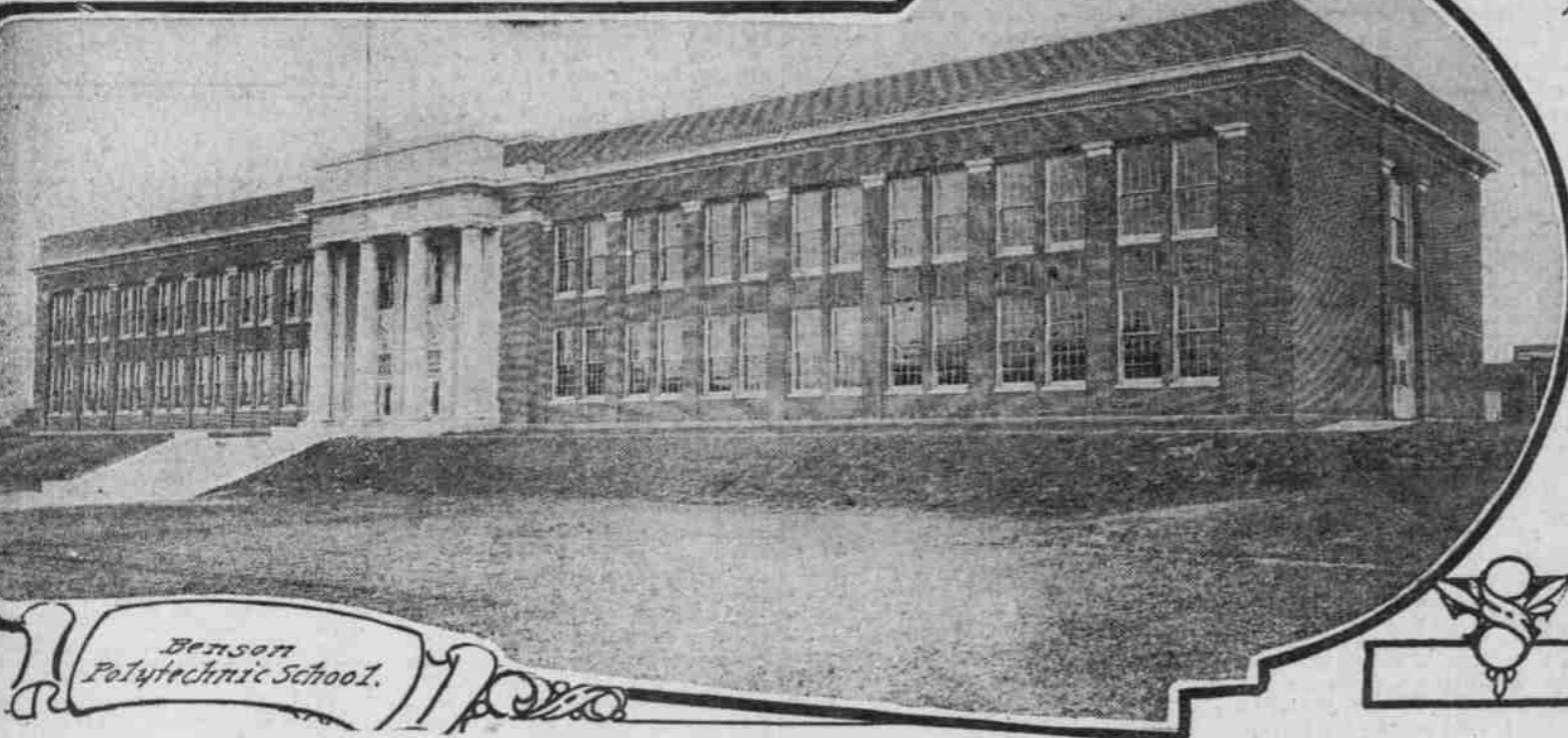
Polytechnic Branches Provide Opportunity for Boys and Girls to Learn Various Trades—Simon Benson's \$100,000 Gift, Applied by Board of Education, Yields Large Returns in Manhood—Open-Air Building Houses Unique Classes—New Construction Work Will Relieve Congestion.



Jefferson High School.



Shattuck School, a Type of the Portland System



Benson Polytechnic School.

A GOOD school system is a great asset to a city. One of the first questions parents ask when considering moving to another community is, "Are the schools good?" Portland, in this respect, is well equipped to satisfy prospective residents, for although the schools are becoming crowded, the quality of instruction and the general school system compares favorably with those in much larger cities.

Portland leads all cities of the United States, for instance, in the percentage of high school enrollment in proportion to the total population of the city. Next in the list are Oak-

land, Cal. and Seattle, Wash., thus giving the Pacific coast high schools a good rating in comparison with other districts.

The high school attendance throughout the state has grown rapidly in the last few years. There are today about 175 high schools in Oregon, giving four-year standard courses.

Each year, a large number of children who enter the grammar grades, complete not only the eight elementary grades, but finish high school, as well. Statistics show that 77 per cent of all children who enter the first grade in Portland schools remain to finish the eighth grade. More than 99 per cent of those who

are grammar grade graduates, finish the high school work. It has been estimated that about 60 per cent of these students go on to college. This is an exceptionally high percentage for students taking up college and university work.

The growth in Portland schools during the last few years has been immense. The normal growth is 5 per cent each year, but last year this jumped to 8 per cent. There are at the present time 5387 students in the high schools of the city and 35,657 in the grammar grades.

Specialization, which has been emphasized so generally recently, has been applied to the schools here with

favorable results. The Benson polytechnic school for boys and the trade school for girls care for those who desire this type of instruction and the high school of commerce equips boys and girls for positions in the business world.

The Benson polytechnic school has won for Portland recognition throughout the country for the high type of technical education which it gives to boys. This school is the outgrowth of the Portland school of trades, which started in 1908, with the purpose of aiding in equipping boys to enter trades.

A great impetus toward the attainment of the ideal technical high school was given in 1915 when Simon Benson of this city gave to the school board \$100,000 for constructing a building. An equal amount was appropriated by the school board and now the building, with its many units and excellently equipped shops, cared for 1415 students, not counting those who come for instruction at night.

This school is a model one of its kind. A four-year technical course is given, providing general training in the fundamental trades. Courses in English, mathematics and science insure the boys' receiving a well-rounded education. The shops, which contain thousands of dollars of valuable machinery, include the foundry, woodworking, blacksmithing, machine, electric, gas engine, plumbing and sheet metal and printing. The school has a library, where much research work is accomplished, and which contains a technical collection, the gift of Mr. Benson.

The girls' polytechnic high school is handicapped by not having such adequate quarters as the boys' school, but the attendance has increased rapidly. The school is of great service to the housewives of the city and its courses in sewing, millinery and cooking are always well attended.

The enrollment at the Benson school last year was nearly 1000 greater than in 1915 and at the girls' trade school, there were 600 more students than five years before. That these schools are fulfilling their mission is indicated in the demand for graduates and the ease with which the students find positions after they have completed the courses.

One of Portland's special schools is a complete and adequate open air school. It is the only one in the city and serves to educate many types of physically subnormal children. Admission examinations often reveal the presence of physical defects, which when removed make the child but a temporary member. The school

Furniture of Quality

Hepplewhite Bedroom Suite

Made in American Walnut and Enamel

The CARMAN name stands for the best in material, workmanship and finish.

Our Bedroom and Dining-Room Suites in Period design may be seen on the floors of all the leading retail furniture stores on the Pacific Coast.

Carman Manufacturing Company

PORTLAND
Tacoma—Seattle—Spokane

Overbeck & Cooke Company

Brokers, Stocks, Bonds, Cotton, Grain, Etc.

216-217 BOARD OF TRADE BUILDING
Walla Walla, Wash. Portland, Or. Pendleton, Or.

Fast leased wires coast to coast.

MEMBERS CHICAGO BOARD OF TRADE
Correspondents of Logan & Bryan, Chicago and New York

MEMBERS

- New York Stock Exchange
- Chicago Stock Exchange
- Boston Stock Exchange
- Chicago Board of Trade
- New York Cotton Exchange
- New Orleans Cotton Exchange
- New York Produce Exchange
- Liverpool Cotton Association

These Are Some of the Houses

in which Gasco Furnaces were installed in One Month (October, 1921).

Thus Portland Is Rapidly Settling the Smoke Nuisance

which other cities battle with

1250 E. COUCH	805 KNOTT	721 E. 20 TH N.	674 SCHUYLER	436 E. 18 TH N.	1420 CRYSTAL SPRINGS BLVD.	1151 WASCO.	665 FREMONT			
160 E. 43 RD N.	93 SCOTT AVE.	548-3 RD S.	1358 E. 35 TH S.	1510 E. 29 TH S.	214 HAZELFERN PLACE	1861 E. MADISON	438 E. 43 RD N.			
			<h3>These Are Some of the Houses</h3> <p>in which Gasco Furnaces were installed in One Month (October, 1921).</p> <h3>Thus Portland Is Rapidly Settling the Smoke Nuisance</h3> <p>which other cities battle with</p>							
320 E. 50 TH S.	355 E. 21 ST N.	4520-25 TH AVE.						1518 THOMPSON	1074 E. COUCH	1201 E. FLANDERS
55 E. 84 TH N.	645 E. 51 ST N.	717 E. PINE.	162 HAZELFERN PLACE	4827-72 ND S. E.	681 KNAPP	1062 E. 28 TH N.	199 PEERLESS PLACE.			
200 SUMMIT AVE.	581 WASHINGTON	361 BROADWAY	85 E. LOMBARD	570 E. MADISON	699 LOVEJOY	4527-66 TH S. E.	1080 E. COUCH	474 E. STARK		