

BULK WHEAT CARGO CARRIER SIGNED UP

New Shipping System to Revolutionize Industry.

WATERFRONT GETS BLOW

Gray-Rosenbaum Co. to Take Grain Out of Municipal Elevator Without Sacking.

A steamer, name and tonnage as yet unknown, has been chartered by the Gray-Rosenbaum Grain company to carry a full cargo of bulk wheat from the Portland municipal grain elevator to Europe, according to brief advice received yesterday by local officials of the company.

Such procedure, if as successful here as in other grain centers, will revolutionize the greatest single marine industry of this port, greatly accelerate the movement of grain carriers and take away the employment of hundreds of men whose services are now required to sack the matted grain in the vessels that carry it abroad.

As one stevedore pointed out a few days ago, if the bulk handling system for export is made the general practice the grain carrier will come to approach the oil tanker in security of disembarkment in port. The tankers he pointed out, come in, discharge and go out again in a few hours without being obliged to pay out a dollar to local watermen.

Under the stimulus of the Gray-Rosenbaum company's operations, the municipal grain elevator at St. Johns is now being utilized for the first time on the scale for which it was built. A few hundred tons of wheat passed through the elevator last season, but was handled in smaller quantities for use of the facilities with which the elevator is equipped.

About 10,000 tons of wheat is now stored in the elevator awaiting the arrival of steamers to carry it away. This amount fills the elevator to about one-third of its total capacity. The greater portion of this 10,000 tons belongs to the Gray-Rosenbaum company, though lots are also in storage there for Kerr, Gifford & Co., the Oregon Co-operative Wheat Growers' association and the Northwest Wheat Growers' association.

Spanish Steamer Coming. The Spanish steamer Igots Mendi will reach Portland tomorrow, according to wireless message received yesterday by the Northern Grain & Warehouse company, her charterers.

Marine Notes. The steam schooner Walkena, left down from St. Helens yesterday afternoon with a cargo of 100 tons of flour.

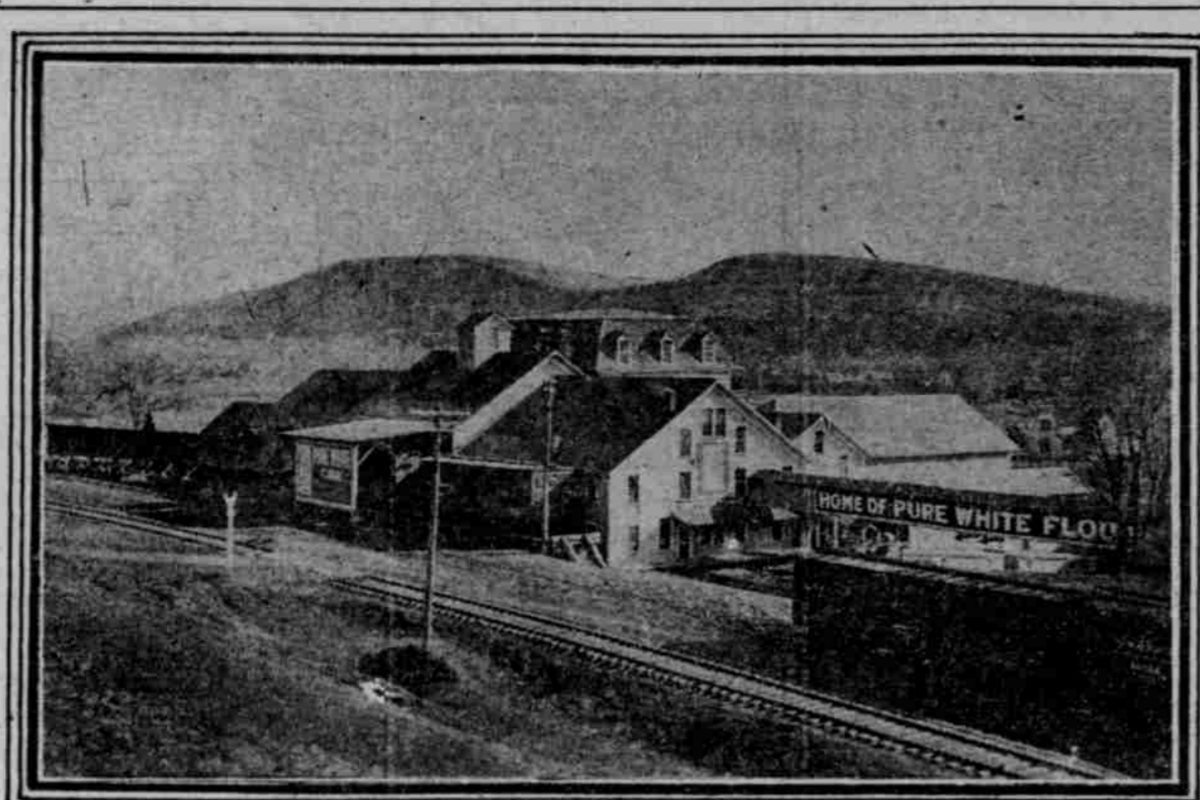
Coffee Import Value \$346,013. Coffee valued at \$346,013 has been imported at this port since November, 1920, according to figures compiled by the traffic bureau of the Port of Portland.

DAILY CITY STATISTICS

- Marriage Licenses. TORNER-MUGFORD-James Turner, legal, 427 1/2 Second street, and Agnes Gundersen, 24 of Horton, Or.
CLADBOURNE-MANNING-H. Charles Cladbourne, legal, 112 East Harrison street, and Estella A. Manning, legal, 228 East Sixth street, North.
APPEL-GARRETT-Bertram Appel, legal, Hotel Adrain, and Hazel E. Garrett, legal, 1182 East Harrison street, North.
PETRONE-SPORITO-Charles Petrone, legal, 121 Lane street, and Josephine Sporito, legal, 232 Carthage street, North.
WILSON-HEATH-Roy B. Wilson, legal, Hotel Portland, and Josephine Heath, legal, 119 Twenty-first street, North.
TUCKER-LUNSFORD-Arthur R. Tucker, legal, Astoria, Or., and Florence Lunsford, legal, 123 Hood street.
CRAPIN-CRAWFORD-Bert H. Crapin, legal, Winfield hotel, and Margaret M. Crawford, legal, 228 East Forty-sixth street, North.
LADLEY-DECKMAN-Frank K. Hadley, legal, 438 East Fifty-seventh street, North, and Esther E. Deckman, legal, 438 East Fifty-seventh street, North.
Vanover Marriage Licenses. NELSON-GUNDRON-Milton Nelson, 23 of Horton, Or., and Agnes Gundersen, 24 of Horton, Or.
LAWRENCE-DEWELL-James Lawrence, 23 of Battle Ground, and Deris Dewell, 27 of Vanover.
JOHNSON-FALDMO-Albert E. Johnson, 27 of Portland, and Sylvia Faldmo, 24 of Battle Ground.
STEVENSON-JOHNSON-Robert Stevenson, 22 of Portland, and Laura Johnson, 21 of Portland.
GRAY-DIEM-Clarence J. Gray, 21 of Portland, and Ruth E. Diem, 21 of Ridgefield.
DEMOND-JACOBS-Ernest F. Demond, 21 of Astoria, Or., and Winifred F. Jacobs, 17 of Astoria, Or.
GALLON-WILSON-Michael A. Gallon, 20 of Wauna, Or., and Beatrice Wilson, 20 of Clatskanie.
OSTLING-BADMAN-Victor Ostling, 20 of Kluckhlat, and Johanna Badman, 26 of Kluckhlat.

HORSES STILL ARE IMPORTANT FACTORS IN WHEAT FIELDS OF WAITSBURG DISTRICT

Touche Valley in Walla Walla County Yields Bountiful Crops of Grain, Climatic Conditions Being Ideal Throughout Year and Soil Unusually Adapted for Agriculture.



BY STANLEY A. BEADLE. WAITSBURG, Wash., Sept. 20.—(Special.)—The king is dead! Long live the king! The horse, one-time a king, is not wholly dead in the wheat sections.

Such procedure, if as successful here as in other grain centers, will revolutionize the greatest single marine industry of this port, greatly accelerate the movement of grain carriers and take away the employment of hundreds of men whose services are now required to sack the matted grain in the vessels that carry it abroad.

Under the stimulus of the Gray-Rosenbaum company's operations, the municipal grain elevator at St. Johns is now being utilized for the first time on the scale for which it was built.

Spanish Steamer Coming. The Spanish steamer Igots Mendi will reach Portland tomorrow, according to wireless message received yesterday by the Northern Grain & Warehouse company, her charterers.

Marine Notes. The steam schooner Walkena, left down from St. Helens yesterday afternoon with a cargo of 100 tons of flour.

Coffee Import Value \$346,013. Coffee valued at \$346,013 has been imported at this port since November, 1920, according to figures compiled by the traffic bureau of the Port of Portland.

DAILY CITY STATISTICS. Marriage Licenses. TORNER-MUGFORD-James Turner, legal, 427 1/2 Second street, and Agnes Gundersen, 24 of Horton, Or.

CLADBOURNE-MANNING-H. Charles Cladbourne, legal, 112 East Harrison street, and Estella A. Manning, legal, 228 East Sixth street, North.

APPEL-GARRETT-Bertram Appel, legal, Hotel Adrain, and Hazel E. Garrett, legal, 1182 East Harrison street, North.

PETRONE-SPORITO-Charles Petrone, legal, 121 Lane street, and Josephine Sporito, legal, 232 Carthage street, North.

WILSON-HEATH-Roy B. Wilson, legal, Hotel Portland, and Josephine Heath, legal, 119 Twenty-first street, North.

TUCKER-LUNSFORD-Arthur R. Tucker, legal, Astoria, Or., and Florence Lunsford, legal, 123 Hood street.

OIL WORKERS' UNION PATROL DENOUNCED

"Law and Order" Committees Held Picketers.

PRODUCERS PROTEST ACTS

Prevention of All Work in California Fields Declared to Be Purpose of Guards.

REFINERY HEAVILY GUARDED

Purpose Declared to Protect Company's Pipe Lines.

MARINEZ, Cal., Sept. 20.—Forty armed guards were placed around the refinery of the Associated Oil company at Avon, three miles from the city, as a result of the strike of the oil fields.

STATE PLANTS PRAISED

MINISTERS LOOK AT SITE FOR TRAINING SCHOOL.

Luncheon and Inspection of Various Institutions Provide Busy Day for Visitors.

SALEM, Or., Sept. 20.—(Special.)—Twenty ministers representing the federated churches of Portland, passed today in Salem inspecting the several state institutions and going over the site of the proposed new state training school for boys.

The ministers were welcomed by Governor Olcott, Secretary of State Koser and R. B. Goodin, secretary of the state board of control, and later taken to the state hospital.

The inspection of this institution was made under the personal direction of Dr. R. E. Lee Steiner, superintendent. Luncheon followed at the Marion hotel.

This afternoon the ministers visited the Oregon state penitentiary, state home for the feeble-minded, Oregon state industrial school for girls and the Oregon state training school for boys.

At the time the state board of control tentatively selected a site for the new state training school for boys objections were raised on the grounds that it was too near the penitentiary.

After inspecting the site, the visiting ministers declared that it was very satisfactory, and that the proposed new institution would prove a great help in bettering the lives of the youthful unfortunate.

Crossing Application Denied.

SALEM, Or., Sept. 20.—(Special.)—The Oregon public service commission, in an order handed down here today, denied the application of the city of Roseburg for a grade crossing at the site known as the old Alexander bridge.

In denying the application the public service commission called attention of the applicant to two other available sites which would eliminate a hazardous crossing over the tracks of the Southern Pacific company.

Trans-Pacific Service

Yokohama, Kobe, Shanghai, Hongkong, Manila, Dairen and Vladivostok.

United States Shipping Board All-Steel American Vessels Sailings from Portland (Freight Only) - New 3

SS. Montague - - - - - Oct. 2

Trans-Pacific Sailings from Seattle Passengers and Fast Freight

*Cross Keys - - - - - Sept. 27

**Wentworth - - - - - Oct. 15

***Frt. only. **Passengers and Frt.

For full information apply to 101 Third St., Cor. Stark Phone Main 5281

OCEAN SERVICE

TO California

SAN FRANCISCO & PORTLAND STEAMSHIP COMPANY

For San Francisco From Portland Atinworth Dock STEAMER "ROSE CITY"

Friday, 10 A. M., Sept. 23 Sunday, 10 A. M., Oct. 2 and every ninth day thereafter

PASSAGE FARES FROM PORTLAND Promenade Deck - - - - - \$25.00

Outside Saloon Deck - - - - - 24.00

Inside Saloon Deck - - - - - 24.00

Third Class (Day Only) - - - - - 50.00

These fares do not include 8% war tax, which must be added. All fares include berth and meals while at sea. City Ticket Office, 3rd and Washington Streets, Portland, Ore. Freight Office, Atinworth Dock Phone Broadway 288

R.M.S.P. New York to Hamburg

Calling at Southampton and Cherbourg

ORFORDA—Oct. 8 and Nov. 24

ORFORDA—Oct. 22 and Dec. 10

ORFORDA—Nov. 12 and Dec. 24

Direct Passenger Service. Large, Luxurious Steamers. 1st, 2nd and 3rd class Passengers. THE ROYAL MAIL STEAM PACKET COMPANY. 204-206 Rainier Bldg., Seattle, Or. Any Steamship Ticket Agent.

R.M.S.P. Oregon-Pacific Company

Freight and Passenger Agents. The Royal Mail Steam Packet Company. 203 Wilcox Building, Portland, Or.

AUSTRALIA

NEW ZEALAND AND SOUTH SEA ISLANDS and Rarotonga. Mail and passenger service from San Francisco every 28 days.

UNION S. S. CO. OF NEW ZEALAND 230 California St., San Francisco, or local steamship and railroad agencies

ASTORIA AND WAY POINTS, STR. GEORGIANA, Lv. Portland Mon., Wed., Fri. 9 A. M. Lv. Astoria Tues., Thur., Sat. 9 A. M. Night boat daily except Sunday 7:30 P. M. Fare \$1.00 Each Way. Connections Made for All North and South Beaches. Alder-St. Deck. Main 1422, 541-22

Just get The Delineator

phase of the problem incident to the making of the clothes yesterday when "Any statement to the effect that the General Petroleum corporation has signed any agreement with the strikers may be categorically denied."

AUCTION TO BE TRIED AGAIN

Ledoux Furnishes Meal Tickets to Hungry Followers.

NEW YORK, Sept. 20.—Urban Ledoux, whose attempt to sell the services of unemployed at auction last night was blocked by the police, today distributed meal tickets to 40 hungry followers and announced he would march to Bryant park and again try to hold his auction.

REFINERY HEAVILY GUARDED

Purpose Declared to Protect Company's Pipe Lines.

MARINEZ, Cal., Sept. 20.—Forty armed guards were placed around the refinery of the Associated Oil company at Avon, three miles from the city, as a result of the strike of the oil fields.

STATE PLANTS PRAISED

MINISTERS LOOK AT SITE FOR TRAINING SCHOOL.

Luncheon and Inspection of Various Institutions Provide Busy Day for Visitors.

SALEM, Or., Sept. 20.—(Special.)—Twenty ministers representing the federated churches of Portland, passed today in Salem inspecting the several state institutions and going over the site of the proposed new state training school for boys.

The ministers were welcomed by Governor Olcott, Secretary of State Koser and R. B. Goodin, secretary of the state board of control, and later taken to the state hospital.

The inspection of this institution was made under the personal direction of Dr. R. E. Lee Steiner, superintendent. Luncheon followed at the Marion hotel.

This afternoon the ministers visited the Oregon state penitentiary, state home for the feeble-minded, Oregon state industrial school for girls and the Oregon state training school for boys.

At the time the state board of control tentatively selected a site for the new state training school for boys objections were raised on the grounds that it was too near the penitentiary.

After inspecting the site, the visiting ministers declared that it was very satisfactory, and that the proposed new institution would prove a great help in bettering the lives of the youthful unfortunate.

Crossing Application Denied.

SALEM, Or., Sept. 20.—(Special.)—The Oregon public service commission, in an order handed down here today, denied the application of the city of Roseburg for a grade crossing at the site known as the old Alexander bridge.

In denying the application the public service commission called attention of the applicant to two other available sites which would eliminate a hazardous crossing over the tracks of the Southern Pacific company.

Trans-Pacific Service

Yokohama, Kobe, Shanghai, Hongkong, Manila, Dairen and Vladivostok.

United States Shipping Board All-Steel American Vessels Sailings from Portland (Freight Only) - New 3

SS. Montague - - - - - Oct. 2

Trans-Pacific Sailings from Seattle Passengers and Fast Freight

*Cross Keys - - - - - Sept. 27

**Wentworth - - - - - Oct. 15

***Frt. only. **Passengers and Frt.

For full information apply to 101 Third St., Cor. Stark Phone Main 5281

OCEAN SERVICE

TO California

SAN FRANCISCO & PORTLAND STEAMSHIP COMPANY

For San Francisco From Portland Atinworth Dock STEAMER "ROSE CITY"

Friday, 10 A. M., Sept. 23 Sunday, 10 A. M., Oct. 2 and every ninth day thereafter

PASSAGE FARES FROM PORTLAND Promenade Deck - - - - - \$25.00

Outside Saloon Deck - - - - - 24.00

Inside Saloon Deck - - - - - 24.00

Third Class (Day Only) - - - - - 50.00

These fares do not include 8% war tax, which must be added. All fares include berth and meals while at sea. City Ticket Office, 3rd and Washington Streets, Portland, Ore. Freight Office, Atinworth Dock Phone Broadway 288

R.M.S.P. New York to Hamburg

Calling at Southampton and Cherbourg

ORFORDA—Oct. 8 and Nov. 24

ORFORDA—Oct. 22 and Dec. 10

ORFORDA—Nov. 12 and Dec. 24

Direct Passenger Service. Large, Luxurious Steamers. 1st, 2nd and 3rd class Passengers. THE ROYAL MAIL STEAM PACKET COMPANY. 204-206 Rainier Bldg., Seattle, Or. Any Steamship Ticket Agent.

R.M.S.P. Oregon-Pacific Company

Freight and Passenger Agents. The Royal Mail Steam Packet Company. 203 Wilcox Building, Portland, Or.

AUSTRALIA

NEW ZEALAND AND SOUTH SEA ISLANDS and Rarotonga. Mail and passenger service from San Francisco every 28 days.

UNION S. S. CO. OF NEW ZEALAND 230 California St., San Francisco, or local steamship and railroad agencies

ASTORIA AND WAY POINTS, STR. GEORGIANA, Lv. Portland Mon., Wed., Fri. 9 A. M. Lv. Astoria Tues., Thur., Sat. 9 A. M. Night boat daily except Sunday 7:30 P. M. Fare \$1.00 Each Way. Connections Made for All North and South Beaches. Alder-St. Deck. Main 1422, 541-22

Just get The Delineator

particular section should be perfect. The inhabitants thereof should be disinclined to desire a home in heaven. But certainly the dwellers in the Walla Walla country are not without justification in the boast that the climate of their main and tributary valleys approach as near perfection as man has any right to expect.

Equality is the main characteristic; absence of extremes of any kind. True, the summer temperature is high, but the humidity is low, and the heat is never of that oppressive kind. In the winter, the temperature is low, but the humidity is low, and the heat is never of that oppressive kind.

Climate Favors Agriculture. These climatic conditions are very favorable for agricultural operations, as has been shown above by specific instances of this year's bumper crop of wheat.

Climate Favors Agriculture. These climatic conditions are very favorable for agricultural operations, as has been shown above by specific instances of this year's bumper crop of wheat.

Climate Favors Agriculture. These climatic conditions are very favorable for agricultural operations, as has been shown above by specific instances of this year's bumper crop of wheat.

Climate Favors Agriculture. These climatic conditions are very favorable for agricultural operations, as has been shown above by specific instances of this year's bumper crop of wheat.

Climate Favors Agriculture. These climatic conditions are very favorable for agricultural operations, as has been shown above by specific instances of this year's bumper crop of wheat.

Climate Favors Agriculture. These climatic conditions are very favorable for agricultural operations, as has been shown above by specific instances of this year's bumper crop of wheat.

Climate Favors Agriculture. These climatic conditions are very favorable for agricultural operations, as has been shown above by specific instances of this year's bumper crop of wheat.

Climate Favors Agriculture. These climatic conditions are very favorable for agricultural operations, as has been shown above by specific instances of this year's bumper crop of wheat.

Climate Favors Agriculture. These climatic conditions are very favorable for agricultural operations, as has been shown above by specific instances of this year's bumper crop of wheat.

Climate Favors Agriculture. These climatic conditions are very favorable for agricultural operations, as has been shown above by specific instances of this year's bumper crop of wheat.

Climate Favors Agriculture. These climatic conditions are very favorable for agricultural operations, as has been shown above by specific instances of this year's bumper crop of wheat.

Climate Favors Agriculture. These climatic conditions are very favorable for agricultural operations, as has been shown above by specific instances of this year's bumper crop of wheat.

Climate Favors Agriculture. These climatic conditions are very favorable for agricultural operations, as has been shown above by specific instances of this year's bumper crop of wheat.

Climate Favors Agriculture. These climatic conditions are very favorable for agricultural operations, as has been shown above by specific instances of this year's bumper crop of wheat.

Climate Favors Agriculture. These climatic conditions are very favorable for agricultural operations, as has been shown above by specific instances of this year's bumper crop of wheat.

Climate Favors Agriculture. These climatic conditions are very favorable for agricultural operations, as has been shown above by specific instances of this year's bumper crop of wheat.

Climate Favors Agriculture. These climatic conditions are very favorable for agricultural operations, as has been shown above by specific instances of this year's bumper crop of wheat.

Climate Favors Agriculture. These climatic conditions are very favorable for agricultural operations, as has been shown above by specific instances of this year's bumper crop of wheat.

Climate Favors Agriculture. These climatic conditions are very favorable for agricultural operations, as has been shown above by specific instances of this year's bumper crop of wheat.

Climate Favors Agriculture. These climatic conditions are very favorable for agricultural operations, as has been shown above by specific instances of this year's bumper crop of wheat.

Climate Favors Agriculture. These climatic conditions are very favorable for agricultural operations, as has been shown above by specific instances of this year's bumper crop of wheat.



Butterick Design 2921

Even the Children's Clothes Cost Less with the Deltor

LITTLE clothes as quaint as those in picture-books—as smart as the frocks we Parisiennes are wearing—so becoming that they will make your children look their very sweetest.

You can make them yourself and they will actually cost you less than any clothes you have ever bought or made! Even if you have never attempted a little garment, you can now create with your own fingers the smartest of school dresses, the most picturesque of party frocks.

All because of a wonderful new invention accompanying every new Butterick pattern; an invention that guides you in three steps to sewing ease, to success, to wonderful economy.

The DELTOR

Saves 50c to \$10 On a Gown for Yourself

First the Deltor gives you an individual layout chart (yes, an individual chart—not just a general chart, but one for your exact size and for each suitable width of material.)

You lay out your pattern—the expert's way. You buy 1/4 to 1 3/4 yards less material on every garment, a saving that amounts to from 50c to \$10 on a gown for yourself!

Then the Deltor saves time. Following the Parisian professional's picture-and-word putting together explanations, you sew swiftly and accurately.

Whether you are making a pair of bloomers or a frock, the Deltor for that particular garment guides every stitch.

And finally as the little garment nears completion, precious secrets of finish are revealed to you—how to bind the buttonholes, how to finish the neck, how to work the scallops—important touches evolved for the garment you are making.

The little garment reveals all the "artful artlessness" of childhood as interpreted by Paris!

BUTTERICK

Style Leaders of the World

Just get The Delineator

Read The Oregonian classified ads.

TRAVELERS' GUIDE. "Ship by Water" WILLIAMS LINE. Announces Norfolk, Virginia, as Regular Port of Call.

WILLIAMS LINE. Announces Norfolk, Virginia, as Regular Port of Call. M. S. Kennecott, Sailing About Sept. 12.

DIRECT SAILINGS FROM PORTLAND AND ASTORIA. NEW YORK, PHILADELPHIA, BALTIMORE, NORFOLK. S. S. Willpou, Loading About Oct. 2.

INTERCOASTAL FREIGHT SERVICE. (Regular service between Portland, Maine; Philadelphia, Boston, New York and Los Angeles, San Francisco, Portland, Oregon; Seattle and Tacoma, Wash.; and Portland, North Atlantic and Western S. S. Co.'s \$800-ton steel vessels.)

THE ADMIRAL LINE PACIFIC STEAMSHIP CO. Passenger and Freight Service. Through Sailings to San Francisco, Los Angeles and San Diego.

Trans-Pacific Service. Yokohama, Kobe, Shanghai, Hongkong, Manila, Dairen and Vladivostok.

SAN FRANCISCO & PORTLAND STEAMSHIP COMPANY. For San Francisco From Portland Atinworth Dock STEAMER "ROSE CITY".

OCEAN SERVICE TO California. SAN FRANCISCO & PORTLAND STEAMSHIP COMPANY.

R.M.S.P. New York to Hamburg. Calling at Southampton and Cherbourg.

R.M.S.P. Oregon-Pacific Company. Freight and Passenger Agents. The Royal Mail Steam Packet Company.

AUSTRALIA. NEW ZEALAND AND SOUTH SEA ISLANDS and Rarotonga. Mail and passenger service from San Francisco every 28 days.