

COAL FROM ALASKA MINES MOSTLY ROCK

Sourdough Charges Waste and Incompetency.

FUEL SHORT NEAR FIELDS

Unfavorable Legislation Makes It Impossible for Married Man to Live, is Charge.

SEATTLE, Wash., Oct. 27.—(Special.)—Charges of inefficiency and incompetency in governmental operations of the Alaska railroad and Chickaloon coal mines were made by Robert R. Hunter, pioneer sourdough and widely known throughout coastal and interior Alaska, who announced today that he would immediately appeal for congressional action to relieve what he terms an "intolerable state of affairs."

Mr. Hunter arrived in Seattle last week from Anchorage. He is leaving immediately for California and while there will enlist the support of Representative Curry of California.

"A married man cannot make a living in Alaska because of his being made the object of unfavorable legislation," declared Mr. Hunter. "I have just returned from the Chickaloon coal fields, and spent considerable time in Anchorage, which is located 75 miles from the coal fields."

The government has been operating in the Chickaloon fields for five years and now these mines only produce between 50 and 100 tons of coal a day. And this supply is all used to operate the mine railroad and other mine properties. There is not one pound of clean Chickaloon coal in Anchorage, 75 miles away.

Hunter charged that the biggest fault in the employment of impractical miners and executives, Hunter said, he got employment in the coal fields and on the railroad to study conditions.

"I observed that out of every 45 mine cars of coal hauled out an average of only six of these cars contained pure coal," he said. "In other words, an average of only six out of every 45 coal cars contain slate and rock—not coal. The policy of the present management is to get tonnage, any not coal."

Money Wasted, Says Critic. In his criticism of railroad building Hunter cited an instance connected with the preparations to build a \$1,000,000 bridge over the Saguina River at the mouth of Gold Creek.

"Placer muck was used in an attempt to mix concrete, but the muck," he asserted, "instead of pouring concrete for a period of eight hours and then allowing it to set for 18 hours, the engineers poured it in for 24 hours. The result was that it all squashed out of the bottom of the piers. This caused a loss of \$100,000, besides causing expense in keeping a large number of steel girders from the east on the ground."

RADICAL SCHOOLS FEARED

WASHINGTON WOMAN ROUSED BY FARMER-LABOR PARTY.

Mrs. Estella G. Mendenhall of Seattle Reports on Series of Meetings in State.

SEATTLE, Wash., Oct. 27.—(Special.)—That the women of the state are thoroughly aroused by the threat of the farmer-labor party to revolutionize the public school system, was the report brought to republican state headquarters today, by Mrs. Estella G. Mendenhall of Seattle. She held a series of meetings for women in Wenatchee, Spokane, Walla Walla and Vancouver and addressed many mixed audiences.

"What may be said to be 'article 10' of the farmer-labor party platform," said Mrs. Mendenhall, "declares for control and management of the public schools, freedom of expression for the teachers and the impartial and accurate teaching of industrial and social history."

This is a thinly veiled declaration that the farmer-labor party would put into effect the North Dakota system of public schools, with all of its obnoxious antagonism to the ties we hold most sacred. The women of Washington are keenly alive to this menace to our public school system, and will not support the Bridges ticket with its non-partisan league-pro-Canadian taint.

10 SOLOISTS TO BE HEARD

TWO MUSICAL ORGANIZATIONS ALSO BILLED FOR CONCERT.

Schubert Club and Central Presbyterian Church Choir to Appear Sunday at Auditorium.

Two musical organizations and ten soloists will appear on the programme at the Sunday afternoon concert in the public auditorium, it is announced. The Schubert club, under the direction of William Belcher, will be one of the feature attractions. This club is a popular one in musical circles.

Another choral organization to appear is the choir from the Central Presbyterian church. Among the soloists who will sing at the concert are Misses Mabelle Holmes, Lee A. Dillon, A. G. Harbaugh, Mrs. A. T. Moulton and Mrs. Maude Belcher. Mrs. L. W. Waldorf will play a violin solo. Frank A. Douglas will accompany the Central Presbyterian church choir. The vocal soloist, Ullman will play for the Schubert club.

In addition Frederick W. Goodrich, well-known organist, will play a series of popular selections on the auditorium pipe organ. The concert will begin at 2 o'clock Sunday afternoon.

FISH MEN ARE ADVISED

Bureau of Fisheries Sends Agent to Astoria.

Astoria, Or., Oct. 27.—(Special.)—For the purpose of making a survey of the fishing industry of the lower Columbia and assist in solving prob-

lems connected with it, Lewis Radcliffe, of the United States Bureau of fisheries, arrived in Astoria yesterday and conferred with cannerymen, fishermen and others identified with the industry. The government is at present without power to regulate the commercial fishing, Mr. Radcliffe said. He spoke of the menace of the purse seine and pointed out the ruin of salmon industry on Puget Sound through lack of protective legislation. They are now proposing to stop all commercial fishing up there for 20 years in order to restore the salmon, he stated, "and the industry there used to be several times as large as that of the Columbia."

BROKERS WIN DEMURRER

VIOLATION OF ANTI-TRUST LAWS IS DENIED.

With Indictments Against 38 Foreign Lines Nearly Quashed, Government Plans Appeal.

NEW YORK, Oct. 27.—A joint demurrer to a federal indictment charging 38 foreign steamship companies and a number of freight brokers as individuals with violation of the Sherman anti-trust laws were sustained in full today by Federal Judge Julius M. Mayer. The complaint alleged combinations for control of foreign steamship business, and the sustaining of the demurrer, it was said by attorneys for the defendants, practically quashed the indictment. It was announced that an appeal will be made by the government. The complaint upon which the indictment was issued was based upon alleged methods in the handling of foreign freight and the compensation of steamship brokers. The demurrer, in which all of the defendant companies joined, asserted that the allegations included in the indictment failed to show any specific violation of the law and that none was sufficient to substantiate the general charge of restraint of trade or commerce. In sustaining the demurrer Judge Mayer ruled in favor of argument made by the defense that none of the defendant companies had any agreement involving a contract of freight rates, and that there was no violation of law in paying commission to any number of brokers a company might wish to employ in the furtherance and expansion of its business.

COAL ORDERS SUSPENDED

Demand at Lake Ports for Transshipment Decline.

WASHINGTON, Oct. 27.—Emergency orders for preference in coal supply and priority in the movement of bituminous coal to Lake Erie ports for transshipment to the northwest were suspended indefinitely today by the interstate commerce commission. Demand for coal at the lake ports for transshipment is now less than at any time since the orders were entered on July 20, the commission stated, with extensive accumulations of coal at these ports and a large volume on route. Production of coal and coal supply have been considerably increased the commission added, and are now believed adequate to take care of the northwest without the priority order.

Send Phone Exchange Grows.

BEND, Or., Oct. 27.—(Special.)—Plans for the expansion of the local exchange of the Pacific telephone company to afford switchboard facilities for a city of 12,000 population



Reliable

RELIABILITY in quality is a fine thing—in price and quality together a real achievement of square deal sincerity—especially nowadays.

Many smokers prefer R·B Cigars, because they are reliably the same today in quality and workmanship as they always have been—still the imported Sumatra wrapper, full-flavored, long-leaf filler, in Londres shape for easy flowing draught.

The same dependable distributing plan that brings R·B's to every dealer in prime, fragrant condition is continued.

With all of this R·B's, Londres size, still sell for the old reliable price—8 cents!

Hart Cigar Co., Distributors
307 Pine St., Portland, Or.
Phone Broadway 1703



were announced today by J. L. Galther, local manager. The announcement came with the closing of a ten-year lease for a building, construction of which will begin at once.

KELSO BOY HONORED

Father Learns of War Cross Award to Son in France.

KELSO, Wash., Oct. 27.—(Special.)—That Lloyd Culp was awarded the French war cross for bravery in battle has just been learned by his father, G. W. Culp of this city, the information coming from the war department. Young Culp was in the 42d division, which was hurried into the conflict to stay the German drive toward Paris in the spring of 1918. He was wounded twice March 9, 1918, and died later in a hospital. The west coast of lower California abounds in pearl oysters.

CRISIS THREATENS CITY

FAILURE OF THREE-MILL TAX MIGHT BE SERIOUS.

Adverse Vote on Levy Would Leave Portland Without Funds to Meet Any Emergency.

If the voters fail to re-authorize the three-mill tax levy next Tuesday Portland will be in the precarious position of having no money that could be used in meeting such emergencies as a snow blockade, an epidemic, a conflagration, or any other disaster that might arise over night, according to City Treasurer Adams.

"It is only necessary to glance at the financial problem facing the city to see that if the council is forced to reduce the tax levy there will not be money enough to meet fixed charges, plus absolutely necessary service, leaving nothing for emergencies," said Treasurer Adams.

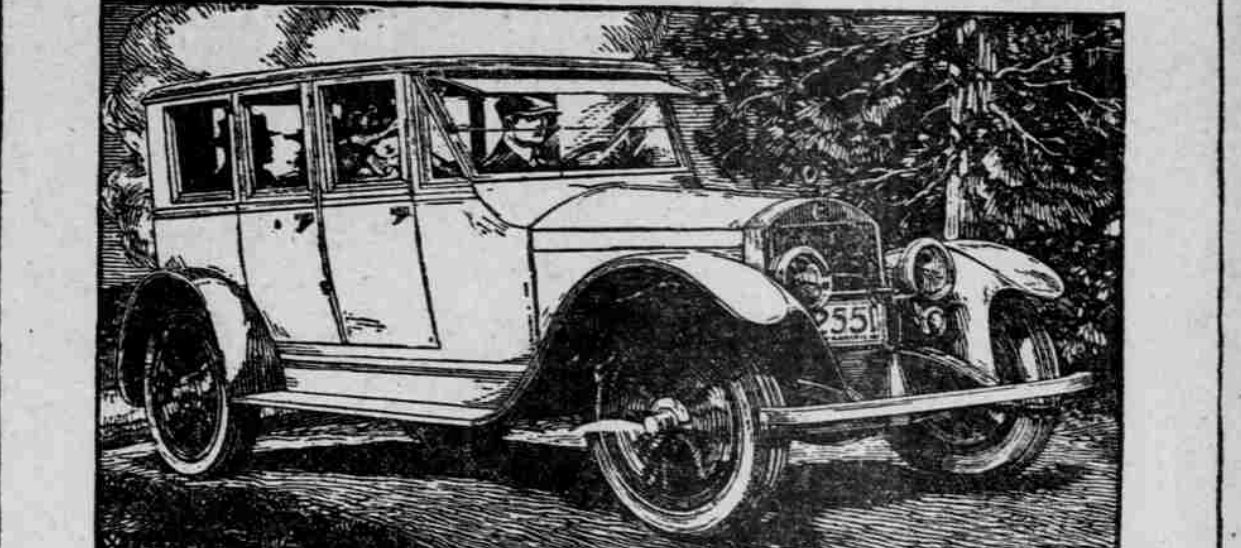
"It was only a short time ago that the city was hit by the epidemic of influenza," he continued. "If the city had been without funds to establish hospitals and take care of the sick and dying, we would have faced an appalling situation."

"The snow blockade last winter cost the city thousands of dollars and had the city failed to act Portland would have been held in the grip of the storm, unable to use its streets for a week or more."

"If the three-mill tax is not available it will be impossible to meet such emergencies."

"The three-mill tax levy would not increase taxes, as many seem to believe, but would simply secure to the city the same amount of money as was provided for municipal purposes this year."

STANDARD EIGHT



A POWERFUL CAR

All people desire power. Some want it for display. Most want it for the tough roads and the steep hills.

If you would buy the full joy of motoring, you need power beyond question.

In the Standard Eight you drive a car of unquestioned power which rides so smoothly that you are aware of its tremendous power only by comparison.

Verdette Sedan, \$5000 Sedan, \$4800 Sedanette, \$4500 Coupé, \$4500 Roadster, \$3400 Touring Car, \$3400 Above prices f. o. b. Butler, Pa.

Present prices guaranteed until April 1, 1921.

Lewis E. Obye Motors Co.

Distributors
Broadway at Couch St.



The goodness of COFFEE depends on three things



THE goodness of good COFFEE depends upon three processes: roasting, grinding, brewing.

Roasting, as now perfected by COFFEE roasters, develops the aromatic oils to which COFFEE owes its delicious fragrance and flavor.

Roasted COFFEE is perishable and deteriorates with age.

When the COFFEE bean is broken open by grinding, it loses strength rapidly. The flavoring oils evaporate quickly unless

ground COFFEE is kept in a tightly covered vessel.

Make sure your COFFEE is fresh when you get it and then—keep it fresh! Fruit jars are ideal for this purpose.

COFFEE once brewed should be kept piping hot, but never allowed to boil. Many a pot of perfect COFFEE has been ruined by letting it cool. Reheating will not restore the delicate flavor and aroma which led the wise men of the East to call COFFEE "The Gift of Heaven." (See rules for making good COFFEE.)

COFFEE

-the universal drink

- Six Rules for Making Good Coffee
- 1—Keep your Coffee fresh—preserve the aroma to the last. Fruit-jars are ideal for this purpose.
- 2—Measure proportions carefully, both Coffee and water.
- 3—When serving hot Coffee, serve it hot. Never reboil.
- 4—Use water only at full boiling-point in making "drip" Coffee.
- 5—Strain or settle carefully. ALL Coffee is clear if properly made.
- 6—Keep Coffee-making utensils clean.



This advertisement is part of an educational campaign conducted by the leading COFFEE merchants of the United States in co-operation with the planters of the State of Sao Paulo, Brazil, which produces more than half of all the COFFEE used in the United States of America.

Copyright 1920 by the Joint Coffee Trade Publicity Committee of the United States, 74 Wall Street, New York.

ASK YOUR DEALER ABOUT THE FREE BOOKLET ON "COFFEE AND COFFEE MAKING"

Wake Up | Do You Need Tires?
SAVE 40% to 50%
The best tires that modern machinery and science can produce.
GUARANTEED POSITIVELY AS REPRESENTED
Not seconds, not defective, but new, clean, first-grade tires.
Factory Distributors
A Trade-Building Tire Sale | Direct From Factory to You
A Few Sample Prices
30x3 1/2\$18.50 | 32x4\$21.00
32x3 1/2\$16.00 | 33x4\$22.00
Includes war tax.
All sizes in proportion.
Prices subject to change. Hurry—while you may enjoy this great saving and your size is here.
Come In—Let's Get Acquainted
PERFECTION TIRE CO.
Tenth and Stark Sts.
Mail orders promptly filled. Send 10% with C. O. D. orders.

GRAY HAIR BECOMES DARK AND BEAUTIFUL
Try Grandmother's Old Favorite Recipe of Sage Tea and Sulphur.
Almost everyone knows that Sage Tea and Sulphur, properly compounded, brings back the natural color and lustre to the hair when faded, streaked or gray. Years ago the only way to get this mixture was to make it at home, which is messy and troublesome.
Nowadays we simply ask at any drug store for "Wyeth's Sage and Sulphur Compound." You will get a large bottle of this old-time recipe improved by the addition of other ingredients, at very little cost. Every body uses this preparation now, because no one can possibly tell that you darkened your hair, as it does it so naturally and evenly. You dampen a sponge or soft brush with it and draw this through your hair, taking one small strand at a time; by morning the gray hair disappears, and after another application or two, your hair becomes beautifully dark, thick and glossy and you look years younger.—Advt.
MOTHER!
"California Syrup of Figs", Child's Best Laxative

Changes in Passenger Schedules
On and After Sunday, October 31

SPOKANE PORTLAND SEATTLE

Between Portland, Astoria, Seaside

Train No. 29, hereafter leaving Portland 8:30 A. M. for Astoria, Seaside and Ft. Stevens; and Train No. 32, arriving Portland 9:50 P. M. from these points, will be withdrawn.

Train No. 21 will leave Portland 8:15 A. M. instead of 7:20 A. M. Arrive Astoria 12:20 P. M. and Seaside 1:25 P. M. Connections to North Beach and Ft. Stevens.

Train No. 24 will start from Seaside at 4:30 P. M., leave Astoria 9:50 P. M. instead of 4:00; arrive Portland 9:40 instead of 8:10.

Nos. 21 and 24 will carry observation buffet parlor cars. Other trains unchanged.
Tickets, parlor car seats, etc., at Consolidated Ticket Office, Third and Washington Streets, North Bank Station, Tenth and Hoyt Streets.

MURINE
Night and Morning, Have Strong, Healthy Eyes. If they're Itchy, Smart or Burn, if Sore, Irritated, Inflamed or Granulated, use Murine often. If making a long city, infant or adult. At all Druggists. Write for Free Book, Murine Eye Remedy Co. Chicago.