

SILAGE AFFECTED BY RECENT RAINS No Water Needed Now, Says Farm Expert.

HOW TO TEST EXPLAINED Corn and Sunflowers in Valley and Coast Districts Likely to Be Good This Year.

Methods of putting up silage this fall are not modified by the extreme wet weather, except that no water will have to be added unless the crop has been frosted or grown under dry farm conditions, said G. R. Hyslop, head of farm crops at the Oregon Agricultural college experiment station.

Both corn and sunflowers in the valley and coast districts are likely to be wet enough when mature enough for good silage. Sunflowers grown under irrigation in eastern and central Oregon will quite probably likewise be wet enough at silage maturity.

Front Requires Water. After frost these crops have been frosted, water may be necessary. If the crops are allowed to stand until they have lost all green color and the seeds are thoroughly hard, they will not make as good silage as if cut earlier.

Corn Blunder Most Saving. The most economical means of cutting corn and sunflowers is with the corn binder. The corn sled is likewise used to good advantage.

Packing Most Important. Right distribution and thorough packing to exclude the air are indispensable to good silage. Several of the best methods are given below for packing by the most successful farmers.

Depth of spoilage is determined largely by the amount of silage in the amount of spoiled silage may be reduced by fitting a tarred paper over the top after the silage has been covered with a big load of silage well packed on. Very little will spoil beneath the paper.

JACKSON LEADS IN PEARS State Statistics Show 5264 Acres of Bearing Trees in Country.

MEDFORD, Or., Oct. 24.—(Special)—The agricultural and horticultural statistics of the state for 1920 reveal that Jackson county leads Oregon in pear acreage and stands second in apple acreage. The county, or valley, has 5264 acres of bearing pear trees and 2787 acres of non-bearing pear trees.

COUNTY AGENTS HOLD MEET Chehalis Official Host to Washington Agricultural Workers.

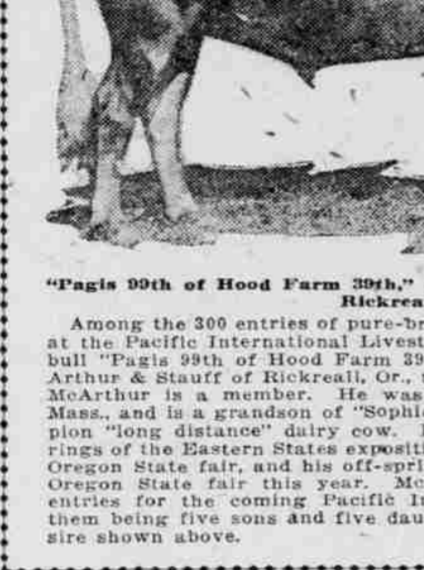
POTATO YIELD IMMENSE Oregon City Gardener Avers He Dug 78 From Just One Hill.

MILK PROJECT IS LAUNCHED Agricultural College Starts Move in Clackamas County.

Greater efficiency in milk production is the purpose of a project launched by the farm management department of the agricultural college extension service in Clackamas county, through the county farm bureau.

Six-Year Feed Tests Reported. The possibilities of making money by fattening steers, together with information on feeding practices and costs under normal conditions are contained in the Oregon experiment station reports on six-year feeding tests at the Union branch, which R. Dunn has just returned from the Clackamas district, where, working with the county agent, R. J. Scott, and farm bureau officers, he interested a number of representative dairymen in the project.

PRIZE-WINNING JERSEY SIRE TO BE SHOWN AT PACIFIC INTERNATIONAL STOCK SHOW.



"Paisa 90th of Hood Farm 39th," owned by McArthur & Stauff of Rickreall, Or.

Among the 300 entries of pure-bred Jerseys entered for exhibition at the Pacific International Livestock exposition, is the 4-year-old bull "Paisa 90th of Hood Farm 39th." This bull is owned by McArthur & Stauff of Rickreall, Or., the firm of which Representative McArthur is a member. He was bred by C. Hood of Lowell, Mass., and is a grandson of "Sophie 19th of Hood Farm," the champion "long distance" dairy cow. He has won prizes in the showings of the National Dairy show, and Oregon State fair, and his offspring won several premiums at the Oregon State fair this year.

GOVWITZ FARMS GROW GOVERNMENT STATEMENT INDICATES INCREASE. Indications Are That Large Tracts of Decade Ago Have Been Broken Up of Late.

THE OREGONIAN NEWS BUREAU, Washington, Oct. 24.—Cowlitz county, Wash., had 1467 farms in January, 1920, as against 903 April 15, 1910, according to figures returned by the census bureau. All but five of the farms were operated by white farmers, 490 in 1910, and 7448 bushels; wheat 33,333 and 12,320 bushels; hay, 27,543 and 19,529 tons; potatoes, 128,799 and 100,000 bushels; other crop loss from 1910 being in potatoes.

SOIL IS BURNED IN SPAIN Student at Oregon Agricultural College Explains Methods.

The Spanish method of improving the physical condition of the soil by burning is explained by Guillermo Giffre, young Spanish student at the Oregon Agricultural college, who is registered from Mallorca island, one of the Balears belonging to Spain. He is taking a course in horticulture, specializing in packing, packing and marketing fruit.

Potato Workers Scarc. YAKIMA, Wash., Oct. 24.—(Special)—Drought in some parts of the Yakima valley are having trouble getting sufficient help, according to reports from the area, it is expected that the spud harvest will be prolonged beyond the normal period. Many growers are pitting their potato crops.

GERA IS TO TAKE ON WHEAT TO TAKE ON WHEAT British Vessel Makes Good Time From Liverpool.

TWO ARE ON WAY TO CITY Eastern Glen and Forst Will Also Take Grain for English Ports. Steamer Waban Gets Out.

The British steamer Gera, which will take a load of wheat from the Columbia river to the United Kingdom, is due to arrive in the river today, according to advices received yesterday by the Merchants' exchange.

Movements of Vessels. PORTLAND, Oct. 24.—Arrived at 12:30 P. M.—Steamer Atlas, from San Francisco, sailed at midnight Saturday, for San Francisco.

SHIP STEWARD MURDERED Crime Reported Upon Arrival of Oriental Liner West Nivaria.

SHIP REPORTS BY RADIOS (Continued by Radio Corporation of America.)

PORT COAST SHIPPING NOTES. ASTORIA, Or., Oct. 24.—(Special)—The steamer Waban, carrying a cargo of grain from Portland, sailed at 11:15 last night for Astoria.

SEATTLE, Wash., Oct. 24.—(Special)—By a seal closed by L. G. Cannon, captain of the steamer Waban, the steamer Waban, carrying a cargo of grain from Portland, sailed at 11:15 last night for Astoria.

SEATTLE, Wash., Oct. 24.—(Special)—By a seal closed by L. G. Cannon, captain of the steamer Waban, the steamer Waban, carrying a cargo of grain from Portland, sailed at 11:15 last night for Astoria.

SEATTLE, Wash., Oct. 24.—(Special)—By a seal closed by L. G. Cannon, captain of the steamer Waban, the steamer Waban, carrying a cargo of grain from Portland, sailed at 11:15 last night for Astoria.

SEATTLE, Wash., Oct. 24.—(Special)—By a seal closed by L. G. Cannon, captain of the steamer Waban, the steamer Waban, carrying a cargo of grain from Portland, sailed at 11:15 last night for Astoria.

MERCHANT MARINE TO SEEK RECRUITS Campaign in Portland to Be Started Today.

25 MEN ARE WANTED All Persons Signed Will Be Put Aboard Hollywood, Which Will Go to Honolulu.

A recruiting campaign for the merchant marine will be begun today by the recruiting office of the shipping board, according to announcement made by Lieutenant Harold C. Jones.

PORTLAND TINWARE SHEET METAL MFG. CO. Wholesale and Retail Manufacturers and Repairers of Tin, Copper and Galvanized Ironware.

WE ALWAYS BUY WASTE PAPER, NEWSPAPERS AND MAGAZINES INDEPENDENT PAPER STOCK CO.

PHOENIX IRON WORKS Eng. & Iron Works, Machinists, Office and Machinery Shop.

HOTEL HOYT Strictly Fireproof. Near both depots and convenient car service.

BEAVER BOARD FOR BETTER WALLS AND CEILINGS RASMUSSEN & CO.

LAND-LADY QUICK TO RIOT TROUBLE Mrs. E. Harshbarger conducts a large rooming house at 234 1/2 East Broadway, Long Beach, California.

MAN'S BEST AGE A man is as old as his organs; he can be as vigorous and healthy at 70 as at 25 if he aids his organs in performing their functions.

DEAD MEN TELL NO TALES The world's standard remedy for kidney, liver, bladder and uric acid troubles since 1696; corrects disorders; stimulates vital organs. All druggists; three sizes.

PORTLAND MANUFACTURERS AND JOBBERS

Rasmussen & Co. PAINT N.E. Corner SECOND and TAYLOR Sts.

J. C. BAYER ROOFING AND SHEET METAL WORK, SKYLIGHTS, METAL CEILING, TANKS

THE PORTLAND CORDAGE CO. Manufacturers of ALL KINDS OF CORDAGE N. 14th and Northrup Sts., Portland, Or.

COMMERCIAL IRON WORKS ENGINEERS—FOUNDERS—MACHINISTS QUOTATIONS GIVEN ON SPECIAL MACHINERY AND CASTINGS.

American Bronze & Brass Works Bronze Signs :: Memorial Tablets Brass, Bronze, Copper and Aluminum Castings

Specialty Foundry & Machine Works Small Castings and Small Machine Work Our Specialty

J. L. Austin Sheetmetal Works Contractors and Constructors of Cornices, Skylights, Steam Tables and General Sheetmetal Work

KNIGHT'S "ROGUE RIVER BRAND" Tomato Catsup

BARRELS AND CASKS And All Kinds of Coopers at Finke Bros. Coopers Works

PORTLAND ELEVATOR CO. East Ninth and Mill Streets Portland, Oregon.

STIFF JOINTS Sore Muscles Smoothed Out By Hamlin's Willard Oil.

What's Good for "Foggy" Teeth? Like so many others, you perhaps know what it is to wake up in the morning with your teeth looking a little dingy and foggy, and feeling rough to the tongue.

PEBECO TOOTH PASTE Counteracts "Acid-Mouth" Its scientifically blended ingredients are of such a character that they literally "wake up" the mouth.

MAN'S BEST AGE A man is as old as his organs; he can be as vigorous and healthy at 70 as at 25 if he aids his organs in performing their functions.

DEAD MEN TELL NO TALES The world's standard remedy for kidney, liver, bladder and uric acid troubles since 1696; corrects disorders; stimulates vital organs. All druggists; three sizes.

Russwin Builders' Hardware, Plumb's Tools, Village Blacksmith Hand-Made Butcher Knives

FADING - McALMAN CO. 88-90 FRONT STREET.

DO YOU KNOW THE BELMONT BATTERY SHOP GRAND AVENUE AT BELMONT, IS GIVING THE SORT OF SERVICE THAT PROLONGS THE LIFE OF YOUR BATTERY!

THE PORTLAND CORDAGE CO. Manufacturers of ALL KINDS OF CORDAGE N. 14th and Northrup Sts., Portland, Or.

COMMERCIAL IRON WORKS ENGINEERS—FOUNDERS—MACHINISTS QUOTATIONS GIVEN ON SPECIAL MACHINERY AND CASTINGS.

American Bronze & Brass Works Bronze Signs :: Memorial Tablets Brass, Bronze, Copper and Aluminum Castings

Specialty Foundry & Machine Works Small Castings and Small Machine Work Our Specialty

J. L. Austin Sheetmetal Works Contractors and Constructors of Cornices, Skylights, Steam Tables and General Sheetmetal Work

KNIGHT'S "ROGUE RIVER BRAND" Tomato Catsup

BARRELS AND CASKS And All Kinds of Coopers at Finke Bros. Coopers Works

PORTLAND ELEVATOR CO. East Ninth and Mill Streets Portland, Oregon.

STIFF JOINTS Sore Muscles Smoothed Out By Hamlin's Willard Oil.

What's Good for "Foggy" Teeth? Like so many others, you perhaps know what it is to wake up in the morning with your teeth looking a little dingy and foggy, and feeling rough to the tongue.

PEBECO TOOTH PASTE Counteracts "Acid-Mouth" Its scientifically blended ingredients are of such a character that they literally "wake up" the mouth.

MAN'S BEST AGE A man is as old as his organs; he can be as vigorous and healthy at 70 as at 25 if he aids his organs in performing their functions.

DEAD MEN TELL NO TALES The world's standard remedy for kidney, liver, bladder and uric acid troubles since 1696; corrects disorders; stimulates vital organs. All druggists; three sizes.