



Center Aisle Bargain Square Sale

ALL-SILK TAFFETA and MESSALINE

Regular \$2.50, \$3 and Better Grades

\$1.89

and . . . Every Yard Perfect

GOOD silks at less than two dollars!

That means pretty silk frocks for the average woman at appreciably less than ten dollars for the material. Every woman knows that dresses of silks like these usually cost a great deal more than that!

Such a saving comes through a large special purchase by the Downstairs Store's executives while in the east. The market price broke—MEIER & FRANK'S had the cash and the outlet—and Portland women benefit.

Both the messaline and taffeta are of standard quality and they measure 36 inches wide, so that they will cut to good advantage.

16 Colors in the Taffeta

Plenty of black and navy, also gray, brown, taupe, cardinal, plum, reseda, copenhagen, old rose, apricot, Nile green, sky blue, pink, putty and maroon.

15 Colors in the Messaline

Black, navy, white, maize, plum, old rose, flesh pink, purple, Nile, copen, tan, gray, cerise, red and green.

THESE SILKS USEFUL IN MANY WAYS

Good for children's and young girls' best frocks, women's smart dresses, petticoats, long and short blouses, linings, millinery trimmings and the fashionable taffeta pillows and curtains.

Extra! Black Satin Duchesse

1000 yards of fine, heavy, lustrous quality 36-inch black satin Duchesse, just received, hurried into the sale at \$1.89 yard.

—Meier & Frank's: Center Aisle, Main Floor.

For Women and Children

Early Autumn Sale of Wool Stockings

Wool stockings with a slight admixture of cotton to make them wear longer and to give added comfort. Already clever people are planning to buy wool stockings and wear them with low shoes all winter long. Here is the opportunity to get the colors and styles you like at quite a price saving. Hundreds of pairs just in. All sizes in every style.

Brown Heather \$2.85
Regularly \$3.25

Brown heather wool mixed stockings of exceptional quality. Slip-stitch fashioned leg. In the real brown mixture which goes with brown or black shoes.

White Stockings \$2.85
Regularly \$3.25

Soft white wool mixed stockings with fashioned legs. Drop-stitch pattern. Very desirable quality.

Green Heather \$1.85
Regularly \$2.25

Most popular of all heather mixtures. Drop-stitch pattern. Fashioned leg. Extra good.

Brown Heather \$1.85
Regularly \$2.25

Brown heather mixtures to match autumn shoes. Exceptionally well made. Drop-stitch pattern, fashioned legs.

Brown Heather \$1.79
Regularly \$2.00

Correct shade of brown in fashioned leg stockings. Such warm stockings bought now will probably save many a cold later on.

Brown Heather \$1.85
Regularly \$2.25

Boys' and girls' good looking wool mixed stockings are so warm and durable that it seems as though every child should wear them during the rainy weather. They wear splendidly. Any size.

—Meier & Frank's: Hosiery Shop, Main Floor.

A Few Fine

Silk Sweaters 1/2

Three styles of exquisite sweaters in three different colors.
Rose Orange French Blue
Plain and basket patterns with tuxedo or shorter collars, some trimmed with fringe.
Originally they were \$85. Thursday the price will be \$42.50. Limited number.

—Meier & Frank's: Sweater Shop, Third Floor.

Inexpensive Pretty Hats

to Wear on Rainy or Clear Days

Don't you often want a "little" hat that won't spoil and can't blow off? Something that has good lines and is agreeably "cheap"?

Quite a number of such hats have come to the Millinery Salons these last few days. They are so attractive that we cannot promise just how long any will be left because naturally your neighbors are on the lookout for them exactly as you are.

Soft little felt hats embroidered in oriental colors, with glint of gold, are \$4.75.
Hatter's plush and beaver combinations are \$6.75.
Beaver sallops in brown and other colors are \$7.95.
Brightly colored felt hats for school girls are \$7.
Beaver sallops with sectional crowns are banded by silver cords with beaver balls, at \$7.95.



Soft little velvet hats are \$8.50. Slitstich cloth hats in pretty colors are \$5.
Black velvet tams stitched with gray and blue beads are \$7.50.
Dozens of others. Why not try them 'on' and see if they are not effective.

—Meier & Frank's: Millinery Salons, Fourth Floor.

Annual Fall Showing and Sale of

Paints, Varnishes, Brushes, Etc.

THURSDAY, Friday and Saturday the Household Utilities Section offers special prices on the paints, enamels, wall tints, varnishes, floor wax, mops and brushes needed for the beautifying of Portland homes and business places this winter.

Painting is economy because it preserves. Paint freshens up the home and makes it like new, proclaims the fact that the family inside is comfortably prosperous and that it takes care of its belongings properly. A little paint on a window sill, or on a roof, a fresh coat of varnish on the floor, a fresh tinting of the wall to cover up the traces of some recent heavy storm—such things add to the looks of the home and to the happiness of mothers.

This sale of paints, varnishes and brushes enables one to save on the regular costs and yet procure the best grades for the purpose. EXPERT PAINT MEN in attendance.



"Imperial" House Paint

This high-grade paint comes in all the desirable colors. All colors except green at the following prices:

- Quart cans, \$1.09
- Gallon cans, \$3.89
- Five-gallon cans, \$18.75
- GREEN**
- Quart cans, \$1.14
- Gallon cans, \$4.07
- Five-gallon cans, \$19.75



Rubber Cement Floor Paint

Rubber cement floor paint dries quickly and has a hard finish. 12 colors at following special prices.

- 1 quart cans, 94c
- 1/2 gallon cans, \$1.69
- Gallon cans, \$3.14



Washable Wall Paint

18 colors in a flat oil paint which is already mixed for immediate use.

- Quart cans, \$1.12
- Gallon cans, \$3.69



Champion White Enamel

White kitchens, white dining rooms, white bedrooms add greatly to the joy of living. White paint makes rooms look much larger and it almost seems to coax sunshine into the room.

- 1/2 pint cans, 47c
- Pint cans, 81c
- Quart cans, \$1.43
- Gallon cans, \$4.99



Interior Flat White Paint

- 1/2 pint cans, 37c
- Pint cans, 61c
- Quart cans, \$1.08
- Gallon cans, \$3.89



"Dekorato" Wall Tints

All the artistic shades that you see upon your neighbors' walls can be placed on your own if you so desire.

- 5-lb. packages, 63c



Japalac

This combined stain and varnish is used for refinishing furniture, floors and almost anything that needs a coat of fine stain or varnish. Regular prices quoted.

- 1/2 pint cans, 25c
- 1/4 pint cans, 50c
- Pint cans, 85c
- Quart cans, \$1.55
- Gallon cans, \$5.50



Japalac Enamel

- 1/2 pint cans, 30c
- 1/4 pint cans, 55c
- Pint cans, \$1.00
- Quart cans, \$1.80



Japalac Gold Paint

- No. 1 cans, 35c
- No. 2 cans, 60c



Japalac Aluminum Paint

- No. 1 cans, 25c
- No. 2 cans, 40c



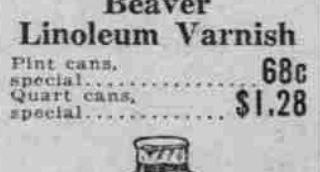
Beaver Spar Varnish

- 1/2 pint cans, 69c
- 1/4 pint cans, \$1.29



Beaver Linoleum Varnish

- 1/2 pint cans, 68c
- 1/4 pint cans, \$1.28



Johnson's Prepared Liquid Wax

- 1/2 pint cans, 45c
- 1/4 pint cans, 68c
- Quart cans, \$1.26



Orange and White Shellac

- 1/2 pint bottles, 34c
- 1/4 pint bottles, 59c
- Pint bottles, \$1.10
- Quart bottles, \$1.99



Brilliantshine Metal Polish

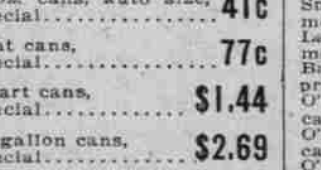
- Pint cans, 26c
- Special, 42c
- Quart cans, 77c
- 1/2 gallon cans, \$1.49



Johnson's Floor Wax

After summer vacations somehow the floors seem dull and they need a thorough waxing to get back their pristine polish.

- 5 oz. cans, auto size, 41c
- Pint cans, 77c
- Quart cans, \$1.44
- 1/2 gallon cans, \$2.69



Johnson's Prepared Liquid Wax

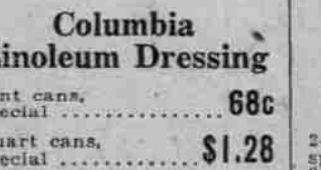
Especially designed for floors, automobiles and furniture.

- 1/2 pint cans, 45c
- Pint cans, 68c
- Quart cans, \$1.26



Art Decorative Enamels

- All colors, 31c
- 1/2-pint cans, 49c
- Pint cans, 87c



Columbia Linoleum Dressing

- Pint cans, 68c
- Quart cans, \$1.28
- 1/2-gallon cans, \$2.39
- Gallon cans, \$4.40



Valspar Varnish at the Standardized Price

This high-grade varnish pays to use because it is so entirely satisfactory.

- 1/2 pint cans, 65c
- Pint cans, \$1.10
- Quart cans, \$2.00
- 1/2 gallon cans, \$3.90
- Gallon cans, \$7.50

Complete line of famous Japalac varnishes, enamels, gold and aluminum paints at the standardized prices.

Full Line of O'Cedar Mops and Brushes At Regular Prices

- Small triangular mops, priced, \$1.25
- Large triangular mops, priced, \$1.75
- Battleship mops, priced, \$1.50
- O'Cedar polish, 4 oz. cans, priced, 30c
- O'Cedar polish, 12 oz. cans, priced, 60c
- O'Cedar polish, 1/2 gallon cans, priced, \$1.25
- O'Cedar polish, 1 gallon cans, priced, \$1.75
- O'Cedar polish, 1/2 gallon cans, priced, \$3.00

Full lines of brushes, turpentine, white lead, raw and boiled oil at lowest prices.



Mohawk Varnish Brushes

- 1-inch brushes, 43c
- 1 1/2-inch brushes, 53c
- 2-inch brushes, 77c
- 2 1/2-inch brushes, 94c
- 3-inch brushes, \$1.29

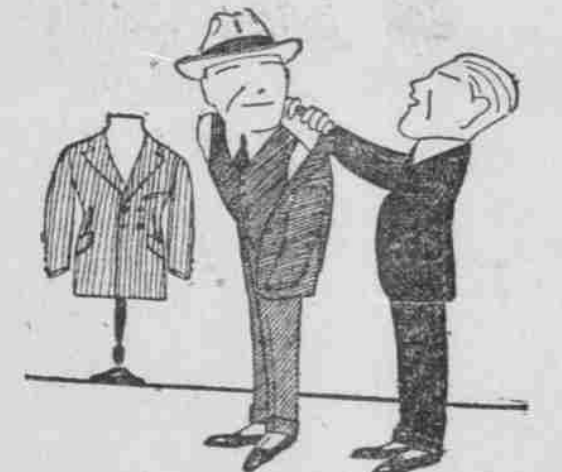


India Paint Brushes

- 2-inch brushes, 77c
- 2 1/2-inch brushes, 99c
- 3-inch brushes, \$1.49
- 4-inch brushes, \$1.89

HERE'S YOUR SUIT SALE

We're Putting Portland Men Into New Suits and Putting Dollars Into Their Pockets



\$45 to \$60 Grades

\$35 to \$40 Grades

\$35

\$25

\$35 suits for men and young men; \$25 suits for young men. Virtually all of the former and great majority of the latter all wool. \$35 group includes SOCIETY BRAND, Adler-Rochester and other standard makes; \$25 group comprises young men's suits from our regular makers. In all, several hundred suits from our regular stocks—half a dozen lines reduced to two bedrock prices because it's MEIER & FRANK'S policy to UNDERSELL.

—Meier & Frank's: The Store for Men, Third Floor.

Thursday—Featuring of

Autumn Skirts in Regular and Extra Sizes

Women of larger than average size may be glad to know that navy blue serge skirts of good quality can be had here up to 42-inch waist measure at \$15 to \$25.

* * *

College and school girls will be delighted with the new plaid skirts in serviceable combinations of dark blue and green or brown and green; these are in the plain styles which hold their shape best for every-day wear. Priced \$12.50 to \$19.50.

* * *

Knife-pleated navy blue serge skirts for college girls are \$10 to \$17.50.

* * *

Plaid skirts in the more exclusive styles and colors come in all regular sizes at \$19.50 to \$35.

—Meier & Frank's: Fashion Salons, Fourth Floor.

