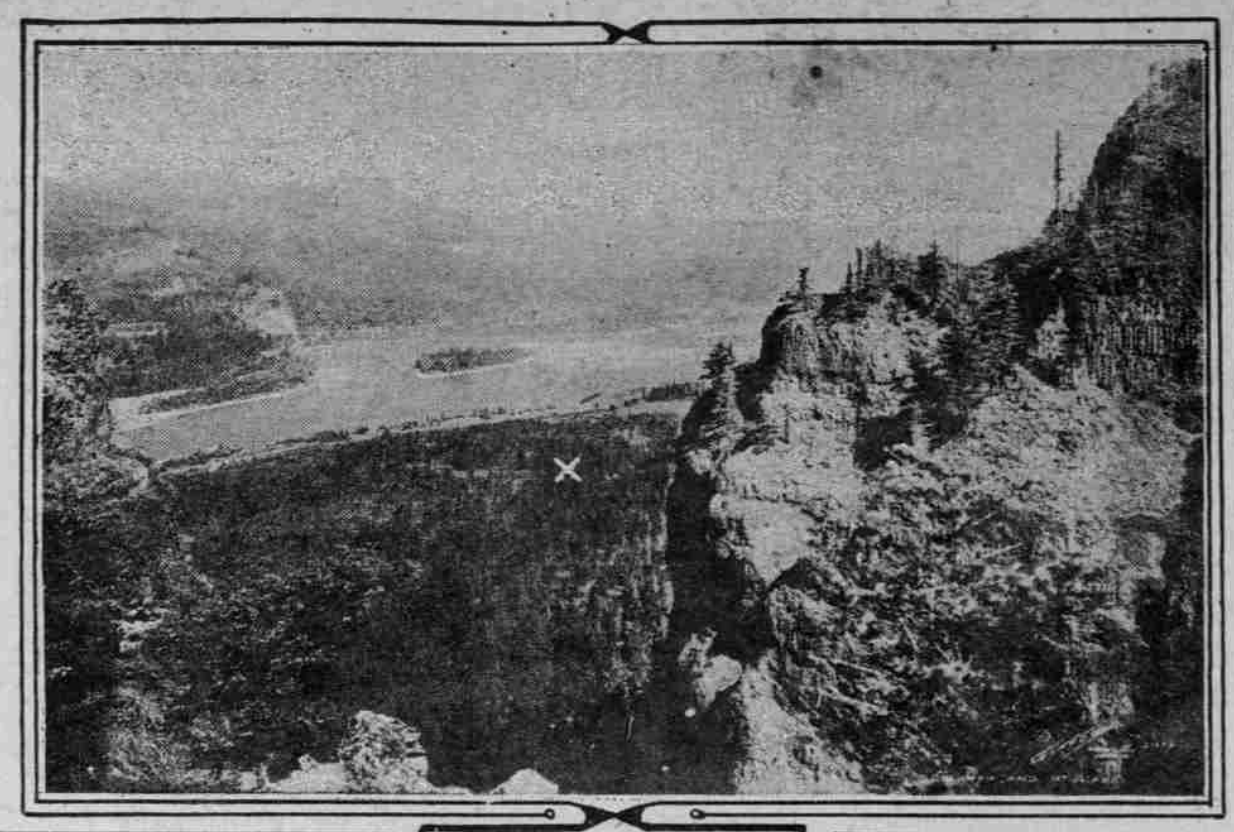


CONTRACT FOR THE PORTLAND CANAL City to Pay Contractors \$25,-020 for Mile Stretch. 40 DAYS IS TIME LIMIT Extensive Educational Campaign Planned to Acquaint Public With Terminal.

PARK SITE OF EIGHTY ACRES UNDER ST. PETER'S DOME OFFERED AS GIFT TO MULTNOMAH COUNTY, AND DONOR OF LAND.



WHEAT RATE REDUCED NEW SCHEDULE TO BECOME EFFECTIVE SEPTEMBER 1. Chartering to Increase as Result of Drop, It Is Thought—Steamer Under Inaugural Loads.

The shipping board rate on wheat and flour from the Pacific coast to Europe has been reduced from \$23 to \$20 per ton, according to advices received from San Francisco yesterday by E. W. Crichton, district agent of the operations division of the shipping board.

Big Campaign Planned. An extensive educational campaign and entertainment programme was decided upon by the dock commission yesterday for the purpose of making Portlanders familiar with what they are to expect at the new municipal terminal.

Commissioner to Co-operate. The dock commission will cooperate with the port commission and the Chamber of Commerce in making a visit to the new terminal.

PIER IS ALMOST FINISHED Unit Expected to Be in Operation in Six Months. TACOMA, Wash., Aug. 5.—(Special)—The first unit of Tacoma's new port development, an \$80-foot open pier, is 80 per cent finished, business men were told today when they made an inspection of the project.

SHERIFF SEEKS FISHERMEN Eight Crews Wanted for Failure to Pay Court Fines. ASTORIA, Or., Aug. 5.—(Special)—Deputy Sheriff Wood of Pacific county, Washington, is here to arrest the captains and crews of eight motor launches and crews of eight motor launches and crews of eight motor launches.

Table with columns: To Arrive at Portland, From, Date, and To Depart from Portland, To, Date.

PASSENGER VESSELS TO COAST 15 Steamers Will Go Into Service With Orient. 5 HAVE 17 KNOTS' SPEED Three Lines Benefit From Allocation of Shipping Board's Weight Is 12,600 Tons Each.

WASHINGTON, Aug. 5.—Allocation of 15 new 12,600 deadweight ton passenger vessels now building in eastern yards for service between the Pacific coast and the Orient was announced today by the shipping board.

PARK SITE IS OFFERED SAM J. GORMAN WOULD GIVE 80 ACRES TO COUNTY Land Is on Columbia River Highway Near St. Peter's Dome and Cathedral Rock. Sam J. Gorman has offered to Multnomah county approximately 80 acres of land for use as a park on the Columbia river highway near St. Peter's dome and Cathedral rock.

FLLOUR SHIP FIRMS MERGE NEW COMPANY KNOWN AS UNITED AMERICAN LINES. 400,000 Deadweight Tons in Addition to 200,000 Tons of Shipping Board Vessels Controlled.

NEW YORK, Aug. 5.—The American Ship and Commerce corporation, through its president, W. A. Harriman, recently concluded an agreement with the Hamburg-American line to merge the two companies.

DELIVERIES BEGIN IN OCTOBER SEATTLE, Wash., Aug. 5.—Deliveries of the five new passenger vessels under construction on the east coast for the Pacific coast, officials of the company here said.

MAIL PLANE AT RENO Non-Stop Flight to Be Made to San Francisco Saturday. RENO, Nev., Aug. 5.—The aerial mail plane plan, first to be made between Reno and San Francisco, will be made Saturday.

ASTORIA, Or., Aug. 5.—(Special)—The South Bend, taken with flour from local mills, sailed at 9:00 o'clock today for New York.

Winters went as first officer and Thomas Mills, of the San Jose, served as chief steward.

U. S. Naval Radio Reports. (All positions reported at 8 P. M. yesterday unless otherwise stated.)

COOS BAY, Or., Aug. 5.—(Special)—The report from the coast station last night relative to sailings were corrected today.

TACOMA, Wash., Aug. 5.—(Special)—The Mukilteo, which arrived here yesterday afternoon with San Francisco freight for Tacoma, sailed down sound this afternoon to load lumber.

MARINE NOTES. The passenger liner Rose City arrived in Astoria at 1 o'clock yesterday afternoon and started up the river for Portland at 5 P. M.

SEATTLE, Wash., Aug. 5.—(Special)—Approximately 100 tons of alumina were shipped from Seattle to Seattle today.

SEATTLE, Wash., Aug. 5.—(Special)—The Alaska Steamship company's freighter Skagway is loading 100 tons of coal at Seattle today.

Astoria and North Beach Steamer Service OF THE Union Pacific System OREGON-WASHINGTON RAILROAD & NAVIGATION CO.

Table with columns: FARES, Between Portland and Astoria, \$1.65; War Tax Included; Tickets and Reservations, Broadway 268, or Consolidated Ticket Office.

HOTEL SEASIDE, INC. BEASIDE (CLATSOP BEACH), OREGON. Oregon's New All-the-Year-Round Ocean Beach Resort Hotel.

WAGES ARE INCREASED Average Rise of \$100 a Year Given Tacoma Street Car Men.

TOYO KISEN KAISHA Direct Passenger Service Between Japan and China. S. S. "SEITO MARU".

DAILY CITY STATISTICS Marriage Licenses, 27; Births, 23; Deaths, 12.

Make Your Reservations Early for September in Canada's Alpine Fairland. See the forests flushed with crimson—Alpine meadows aflame with gorgeous flowers in the Canadian Pacific Rockies.

Astoria Route S. S. "ASTORIAN" 2:00 P. M. DAILY (Except Thursday). FARE \$1.85, including tax.