

AMERICAN TROOPS WHO ARE GUARDING THEIR COUNTRY'S INTERESTS IN GERMANY.

# NOSKE QUILTS POST IN EBERT CABINET

### Resignation of All Other Members Forecast.

## LABOR DEMANDS PLACES

### Administration Is Reported as Likely to Acquiesce—Soviet Danger Is Reported Worse.

BERLIN, March 22.—(By the Associated Press.)—Gustav Noske, minister of defense, presented his resignation today to President Ebert this afternoon and the president accepted it. Other cabinet changes are imminent. It was announced that the independent today demanded a definite labor cabinet and that the government is considering the demands.

BERNE, Switzerland, March 22.—The whole Ebert-Bauer cabinet probably will resign, according to Berlin advices. The crisis has been brought about by the opposition aroused by the agreement with the trade unions, especially in the rural districts. The situation in the western industrial regions and in upper Silesia, particularly Breslau, is still serious, the advices add. The military populations, however, are calm.

PARIS, March 22.—(Havas).—Eight thousand persons have been killed since the German revolt broke out on March 13, according to advices received here. Of this number 350 were killed in Berlin alone.

BERLIN, March 22.—(By the Associated Press.)—The ministry of defense has declared that the conditions in the Ruhr district were becoming worse. The towns of Essen, Aachen, Drensteinfurt, in Westphalia, southeast of Muenster, had been taken by the communists. It was stated, and the movement was spreading north and east.

Pitched battles had been fought, the ministry's information showed, and two crack regiments of government troops had been forced to fall back on the fortress of Wesel, on the right bank of the Rhine, 22 miles northwest of Essen, after heavy losses had been sustained on both sides. Ten officers in one regiment were killed.

Berlin, notwithstanding the return of the Ebert government to control there, still presents pretty much the aspect of an armed camp with the food supply short and gangster fighting occurring in the suburbs. There is little change in the strike situation.

Serious trouble occurred in the Mohl industrial quarter Sunday night and in one conflict reported Sunday, 29 Spartacists were killed in an engagement at the factory. The captured were summarily executed. In the Ruhr industrial region, immediately adjoining the allied zone of occupation, there is veritable civil warfare, with opposing armies of communist and government troops drawing up the forces in preparation for battle. Government detachments have been defeated in some preliminary skirmishes.

Leipzig Reported Quieter. Leipzig has quieted down after the government victory there. Among the agricultural population in some sections of northern Germany there is increasing unrest.

Southern and eastern Germany are reported fairly quiet. There is a threat, however, of a renewal of the general strike in Bavaria, because of dissatisfaction over some of the terms of settlement.

"You can not paint the situation throughout Germany too black," an official at the ministry declared after a survey of the reports that had come in during the night. The situation in Berlin itself was characterized as "bad." In one case a company of volunteers had been overpowered by Spartacist forces in the Berlin district, the outposts of the regulars have been withdrawn, leaving detachments to guard the stockyards and railway station.

The marine brigade and the Baltic troops, which occupied Berlin during the Kapp regime, have been cleared out from Charlottenburg and have joined the other military units at the Doberitz camp, where all are retreating.

These troops, it was stated, will be counted as the chief protectors of Berlin. Neukolln and Tempelhof, the workingmen's residential quarters in the suburbs, where disorders occurred Saturday, had been quieted by government troop activities.

STUTTGART, March 22.—(By the Associated Press.)—Troops from Silesia are officially reported to have arrived in the Ruhr district and fighting with the Spartacan army there is expected tomorrow.

Red Army Held Exaggerated. It is officially stated here that the estimates placing the size of the red forces in the Ruhr region at 70,000 are exaggerated.

A general strike has been called in Munich, and it is expected the movement will extend throughout Bavaria unless it is stopped as a result of the negotiations now in progress to settle the demands of the workmen to pay during the period they were on strike against the Kapp regime. Meetings are to be held in the Wurttemberg factories by the councils of workmen to consider if similar action should be taken throughout Wurttemberg.

Reports received here from Nuremberg said that city was quiet on Sunday, following some disorders the previous night.

Federal Plan Is Picked.

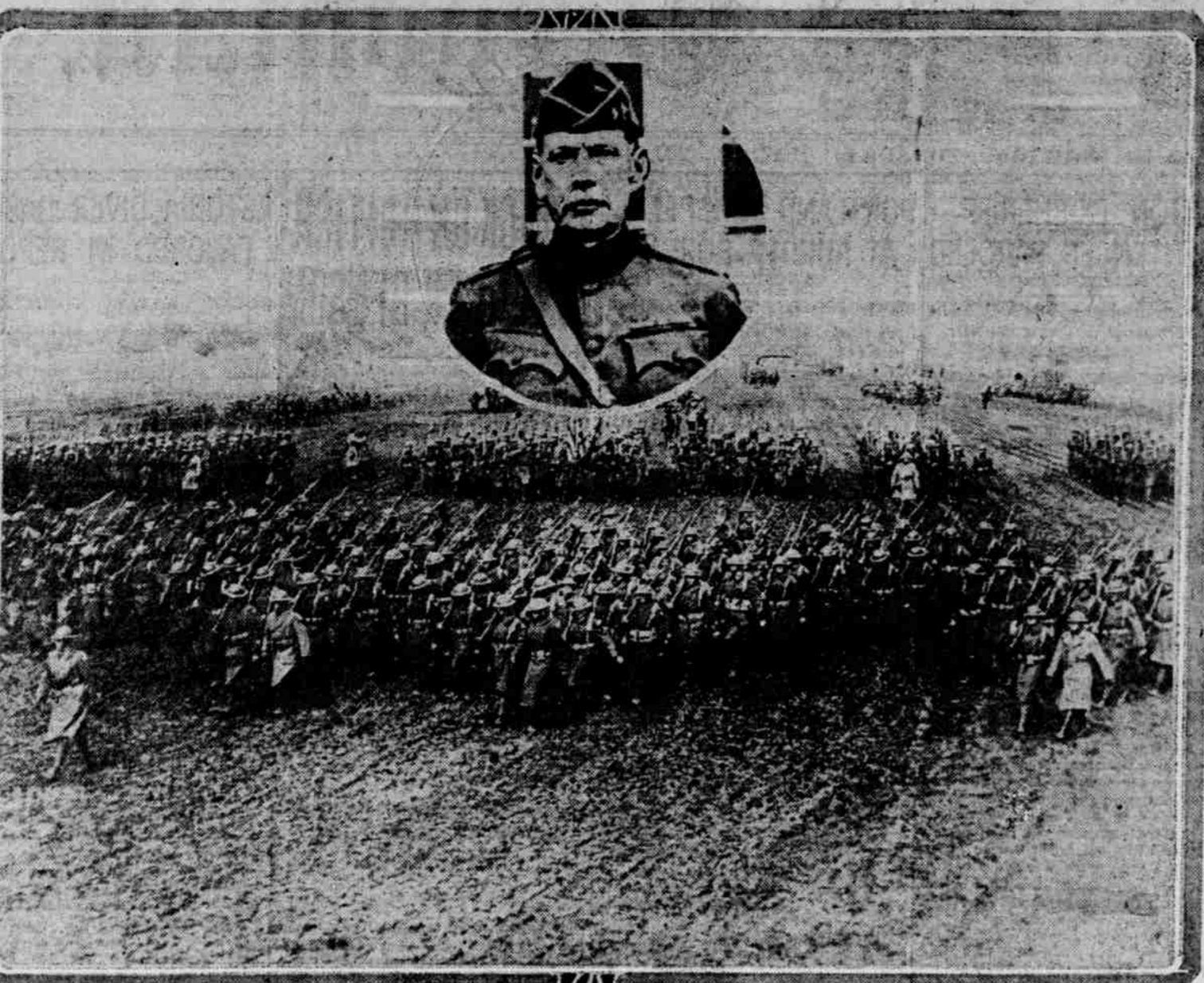
EUGENE, Or., March 22.—(Special.)—F. W. Landrum of La Grande will be assistant postmaster at Eugene, according to announcement yesterday of E. L. Campbell, postmaster here. He succeeded Wilder R. Farnham who resigned a short time ago. It is expected that Mr. Landrum and family will arrive here about April 1.

Mrs. Anette Light Is Buried.

EUGENE, Or., March 22.—(Special.)—Mrs. Anette Light, a resident of Eugene, who died suddenly at her home Friday while she was alone, was buried yesterday. She had been living alone and a neighbor calling on her found her dead in bed. She was 75 years of age.

Headaches From Slight Cold. LAXATIVE BROMO QUININE Tablets relieve the Headache by ridding the system of toxic waste and germ destroyer. Look for signature E. W. GROVE on box. 35c.

S. & H. Green Stamps for cash. Holman Fuel Co. Main 353. (40-21-Adv.)



MARCHING DOUBTHOYS PHOTOGRAPHED NEAR EHRENBREITSEIN. INSERT—GENERAL HENRY T. ALLEN, THEIR COMMANDER.

## SCHOOL STRIKE SETTLED

### HARMONY REACHED AND PUPILS RETURN TO STUDIES.

### Young Men Sign Agreement to Regard Incident as Closed and to Make Up for Lost Time.

CHEHALIS, Wash., March 22.—(Special.)—All the high school students who went on strike last week are back at school today. The board Saturday agreed upon a letter to be sent to all the parents, together with an agreement that each pupil was asked to sign. This agreement included renunciation of the strike as a proper method of securing correction of the troubles alleged to exist and a promise not to again strike nor to encourage others so to do; to make up all lost school work under regulations as to time; to sign the faculty's statement never to be made public; said Senator Pittmann, resuming the cross-examination. "Do you mean by me?" asked Admiral Sims.

Breaking Confidence Denied. "By you or anyone else," replied the senator. "It referred to a great power or with which we were on friendly terms and it was given to you in strict confidence, so secretly that it went about even in writing."

"It was not given to me in confidence," said the admiral. "It was told to me in a room before other naval officers who, like yourself, are supposed to know what to talk about."

"Yes, it was confided to you by other naval officers who, like yourself, are supposed to know what to talk about," replied Senator Pittmann.

"We naval officers made up our minds to one thing," said Admiral Sims, "and that was that we will never go into another war in the condition in which we went into this one."

Army Use as Labor Favored. Senator Pittmann referred to a letter from Admiral Sims to Admiral Bayly of the British navy, commanding at Queenstown, in which he said "Admiral Benson's statement should never have been made public," said Senator Pittmann, resuming the cross-examination.

"It was not written by me," said Admiral Sims, "and I object to your calling it propaganda. It is pretty good military reasoning and what I like recommended."

Windpipe Stitched; Man Lives. GREAT FALLS, Mont., March 22.—Declared by attending physicians to have severed both jugular veins and his windpipe with a razor today, J. Wesley McClure of this city was declared to show few ill effects after the severed passages had been sewed together and a tube inserted. McClure is on parole from the state insane hospital.

New Pullman Tariff Proposed. SALEM, Or., March 22.—(Special.)—Members of the state highway commission will meet in Portland tomorrow, when bids will be opened for several proposed new roads and a number of bridges. In the event the bids are satisfactory the contracts probably will be awarded in order that actual work may start with the opening of the summer season.

Because of the illness of R. A. Booth, a member of the commission, he will be unable to attend tomorrow's session.

SALEM, Or., March 22.—(Special.)—The committee on the condition of class rooms at Corvallis.

OREGON AGRICULTURAL COLLEGE, Corvallis, March 22.—(Special.)—A committee of the Oregon chapter of the American Association of Engineers has just inspected the college to determine the needs of the institution in respect to the school of engineering. The committee consisted of F. D. Weber, chairman, O. Laurgard, E. W. Lazell, F. S. Ballie and D. C. Henry.

The committee commented on the crowded condition of class rooms and laboratories. The association is showing great interest in the engineering activities of the college and will give its unanimous support to the millage tax question to be voted on May 21, it is thought.

Excise Tax on Jewelry Proposed. IDAHOA SEES MORNING TRAIN. SALEM, Or., March 22.—(Special.)—A petition signed by about 40 residents of Idaho, located at the terminus of the Mill City branch of the Southern Pacific railroad, has been filed with the Oregon public service commission asking that morning train service be extended to that place. It is set out in the petition that about 100 families reside in the vicinity of Idaho, and under the present train schedule, the residents there are unable to make the return trip to Detroit in one day. The commission probably will hear the application early in April, although no definite date has yet been set.

Read The Oregonian classified ads.

THOMPSON'S Deep-Cure Lenses Are Better. (Trademark Registered) THE SIGN OF PERFECT SERVICE. Thoroughly experienced Optician for the examination and adjustment, skilled workmen to construct the lenses—a guaranteed service that guarantees dependable glasses at reasonable prices. Complete Lens Grinding Factory on the Premises. SAVE YOUR EYES. THOMPSON OPTICAL INSTITUTE EYE-SIGHT SPECIALISTS. Portland's Largest, Most Modern, Best Equipped, Extensive Optical Establishment. 209-10-11 CORBETT BLDG., FIFTH AND MORRISON. Since 1908.

Useless things—a safety razor without a blade—a lock without a key—a flashlight without a battery. See page 6.

Headaches From Slight Cold. LAXATIVE BROMO QUININE Tablets relieve the Headache by ridding the system of toxic waste and germ destroyer. Look for signature E. W. GROVE on box. 35c.

## BODY FOUND IN BRUSH

### VIAL OF CARBOLIC ACID TELLS OF APPARENT SUICIDE.

### Sheepman's Mind Said to Have Become Impaired After Recent Severe Attack of Influenza.

The Oregon public service commission has received at its offices here a proposed schedule of rates sought by the Pullman company which operates cars on practically all of the railroads of the United States. The tariff is the same as filed with the interstate commerce commission and fixes a minimum charge for lower berths at \$2, increasing the minimum charge for seats to 50 cents, and asks for the setting aside of certain so-called "special" rates no win effect in various sections of the country.

HEPPNER, Or., March 22.—(Special.)—The dead body of Frank McCarton was found lying in the sage brush about one mile from the Heppner depot late yesterday by Henry Stout and his son, who were hunting rabbits. An empty two-ounce vial that had contained carbolic acid lying beside the body told the story of apparent suicide.

McCarton was a prosperous Irish sheepman, 29 years old. He was of good family, well educated and popular. Recently he suffered a severe attack of influenza and his friends say the illness left him in a weakened condition, physically and that his mind became impaired to such an extent that suicidal mania developed. During his illness he sold his interest in a band of sheep to his partner and after getting out, about March 1, deposited \$1000 in a local bank. Later he took out \$10,000 life insurance policy, and a short time after he left town, supposedly for his ranch.

Nothing more was seen of him until his body was discovered Sunday. A brother and two sisters residing in New York city have been communicated with and have directed that the body be forwarded to that city for interment.

Excise Tax on Jewelry Proposed. IDAHOA SEES MORNING TRAIN. SALEM, Or., March 22.—(Special.)—A petition signed by about 40 residents of Idaho, located at the terminus of the Mill City branch of the Southern Pacific railroad, has been filed with the Oregon public service commission asking that morning train service be extended to that place. It is set out in the petition that about 100 families reside in the vicinity of Idaho, and under the present train schedule, the residents there are unable to make the return trip to Detroit in one day. The commission probably will hear the application early in April, although no definite date has yet been set.

Read The Oregonian classified ads.

THOMPSON'S Deep-Cure Lenses Are Better. (Trademark Registered) THE SIGN OF PERFECT SERVICE. Thoroughly experienced Optician for the examination and adjustment, skilled workmen to construct the lenses—a guaranteed service that guarantees dependable glasses at reasonable prices. Complete Lens Grinding Factory on the Premises. SAVE YOUR EYES. THOMPSON OPTICAL INSTITUTE EYE-SIGHT SPECIALISTS. Portland's Largest, Most Modern, Best Equipped, Extensive Optical Establishment. 209-10-11 CORBETT BLDG., FIFTH AND MORRISON. Since 1908.

Useless things—a safety razor without a blade—a lock without a key—a flashlight without a battery. See page 6.

Headaches From Slight Cold. LAXATIVE BROMO QUININE Tablets relieve the Headache by ridding the system of toxic waste and germ destroyer. Look for signature E. W. GROVE on box. 35c.

S. & H. Green Stamps for cash. Holman Fuel Co. Main 353. (40-21-Adv.)

## ENGINEERS VIEW COLLEGE

### Crowded Condition of Class Rooms Is Noted at Corvallis.

OREGON AGRICULTURAL COLLEGE, Corvallis, March 22.—(Special.)—A committee of the Oregon chapter of the American Association of Engineers has just inspected the college to determine the needs of the institution in respect to the school of engineering. The committee consisted of F. D. Weber, chairman, O. Laurgard, E. W. Lazell, F. S. Ballie and D. C. Henry.

The committee commented on the crowded condition of class rooms and laboratories. The association is showing great interest in the engineering activities of the college and will give its unanimous support to the millage tax question to be voted on May 21, it is thought.

Excise Tax on Jewelry Proposed. IDAHOA SEES MORNING TRAIN. SALEM, Or., March 22.—(Special.)—A petition signed by about 40 residents of Idaho, located at the terminus of the Mill City branch of the Southern Pacific railroad, has been filed with the Oregon public service commission asking that morning train service be extended to that place. It is set out in the petition that about 100 families reside in the vicinity of Idaho, and under the present train schedule, the residents there are unable to make the return trip to Detroit in one day. The commission probably will hear the application early in April, although no definite date has yet been set.

Read The Oregonian classified ads.

THOMPSON'S Deep-Cure Lenses Are Better. (Trademark Registered) THE SIGN OF PERFECT SERVICE. Thoroughly experienced Optician for the examination and adjustment, skilled workmen to construct the lenses—a guaranteed service that guarantees dependable glasses at reasonable prices. Complete Lens Grinding Factory on the Premises. SAVE YOUR EYES. THOMPSON OPTICAL INSTITUTE EYE-SIGHT SPECIALISTS. Portland's Largest, Most Modern, Best Equipped, Extensive Optical Establishment. 209-10-11 CORBETT BLDG., FIFTH AND MORRISON. Since 1908.

Useless things—a safety razor without a blade—a lock without a key—a flashlight without a battery. See page 6.

Headaches From Slight Cold. LAXATIVE BROMO QUININE Tablets relieve the Headache by ridding the system of toxic waste and germ destroyer. Look for signature E. W. GROVE on box. 35c.

S. & H. Green Stamps for cash. Holman Fuel Co. Main 353. (40-21-Adv.)

Headaches From Slight Cold. LAXATIVE BROMO QUININE Tablets relieve the Headache by ridding the system of toxic waste and germ destroyer. Look for signature E. W. GROVE on box. 35c.

S. & H. Green Stamps for cash. Holman Fuel Co. Main 353. (40-21-Adv.)

Headaches From Slight Cold. LAXATIVE BROMO QUININE Tablets relieve the Headache by ridding the system of toxic waste and germ destroyer. Look for signature E. W. GROVE on box. 35c.

S. & H. Green Stamps for cash. Holman Fuel Co. Main 353. (40-21-Adv.)

Headaches From Slight Cold. LAXATIVE BROMO QUININE Tablets relieve the Headache by ridding the system of toxic waste and germ destroyer. Look for signature E. W. GROVE on box. 35c.

S. & H. Green Stamps for cash. Holman Fuel Co. Main 353. (40-21-Adv.)

Headaches From Slight Cold. LAXATIVE BROMO QUININE Tablets relieve the Headache by ridding the system of toxic waste and germ destroyer. Look for signature E. W. GROVE on box. 35c.

S. & H. Green Stamps for cash. Holman Fuel Co. Main 353. (40-21-Adv.)

Headaches From Slight Cold. LAXATIVE BROMO QUININE Tablets relieve the Headache by ridding the system of toxic waste and germ destroyer. Look for signature E. W. GROVE on box. 35c.

S. & H. Green Stamps for cash. Holman Fuel Co. Main 353. (40-21-Adv.)

Headaches From Slight Cold. LAXATIVE BROMO QUININE Tablets relieve the Headache by ridding the system of toxic waste and germ destroyer. Look for signature E. W. GROVE on box. 35c.

S. & H. Green Stamps for cash. Holman Fuel Co. Main 353. (40-21-Adv.)

Headaches From Slight Cold. LAXATIVE BROMO QUININE Tablets relieve the Headache by ridding the system of toxic waste and germ destroyer. Look for signature E. W. GROVE on box. 35c.

S. & H. Green Stamps for cash. Holman Fuel Co. Main 353. (40-21-Adv.)

## DUKE MAY BE DIVORCED

### Duchess of Marlborough Gets Preliminary Court Decree.

LONDON, March 22.—The application of the Duchess of Marlborough, formerly Consuela Vanderbilt, for a decree for restitution of conjugal rights, was granted by the court today. The petition is the usual preliminary to divorce. The court orders the decree to be obeyed within 14 days after its service upon the duke.

SALEM, Or., March 22.—(Special.)—The committee on the condition of class rooms at Corvallis.

OREGON AGRICULTURAL COLLEGE, Corvallis, March 22.—(Special.)—A committee of the Oregon chapter of the American Association of Engineers has just inspected the college to determine the needs of the institution in respect to the school of engineering. The committee consisted of F. D. Weber, chairman, O. Laurgard, E. W. Lazell, F. S. Ballie and D. C. Henry.

The committee commented on the crowded condition of class rooms and laboratories. The association is showing great interest in the engineering activities of the college and will give its unanimous support to the millage tax question to be voted on May 21, it is thought.

Excise Tax on Jewelry Proposed. IDAHOA SEES MORNING TRAIN. SALEM, Or., March 22.—(Special.)—A petition signed by about 40 residents of Idaho, located at the terminus of the Mill City branch of the Southern Pacific railroad, has been filed with the Oregon public service commission asking that morning train service be extended to that place. It is set out in the petition that about 100 families reside in the vicinity of Idaho, and under the present train schedule, the residents there are unable to make the return trip to Detroit in one day. The commission probably will hear the application early in April, although no definite date has yet been set.

Read The Oregonian classified ads.

THOMPSON'S Deep-Cure Lenses Are Better. (Trademark Registered) THE SIGN OF PERFECT SERVICE. Thoroughly experienced Optician for the examination and adjustment, skilled workmen to construct the lenses—a guaranteed service that guarantees dependable glasses at reasonable prices. Complete Lens Grinding Factory on the Premises. SAVE YOUR EYES. THOMPSON OPTICAL INSTITUTE EYE-SIGHT SPECIALISTS. Portland's Largest, Most Modern, Best Equipped, Extensive Optical Establishment. 209-10-11 CORBETT BLDG., FIFTH AND MORRISON. Since 1908.

Useless things—a safety razor without a blade—a lock without a key—a flashlight without a battery. See page 6.

Headaches From Slight Cold. LAXATIVE BROMO QUININE Tablets relieve the Headache by ridding the system of toxic waste and germ destroyer. Look for signature E. W. GROVE on box. 35c.

S. & H. Green Stamps for cash. Holman Fuel Co. Main 353. (40-21-Adv.)

Headaches From Slight Cold. LAXATIVE BROMO QUININE Tablets relieve the Headache by ridding the system of toxic waste and germ destroyer. Look for signature E. W. GROVE on box. 35c.

S. & H. Green Stamps for cash. Holman Fuel Co. Main 353. (40-21-Adv.)

Headaches From Slight Cold. LAXATIVE BROMO QUININE Tablets relieve the Headache by ridding the system of toxic waste and germ destroyer. Look for signature E. W. GROVE on box. 35c.

S. & H. Green Stamps for cash. Holman Fuel Co. Main 353. (40-21-Adv.)

Headaches From Slight Cold. LAXATIVE BROMO QUININE Tablets relieve the Headache by ridding the system of toxic waste and germ destroyer. Look for signature E. W. GROVE on box. 35c.

S. & H. Green Stamps for cash. Holman Fuel Co. Main 353. (40-21-Adv.)

Headaches From Slight Cold. LAXATIVE BROMO QUININE Tablets relieve the Headache by ridding the system of toxic waste and germ destroyer. Look for signature E. W. GROVE on box. 35c.

S. & H. Green Stamps for cash. Holman Fuel Co. Main 353. (40-21-Adv.)

Headaches From Slight Cold. LAXATIVE BROMO QUININE Tablets relieve the Headache by ridding the system of toxic waste and germ destroyer. Look for signature E. W. GROVE on box. 35c.

S. & H. Green Stamps for cash. Holman Fuel Co. Main 353. (40-21-Adv.)

Headaches From Slight Cold. LAXATIVE BROMO QUININE Tablets relieve the Headache by ridding the system of toxic waste and germ destroyer. Look for signature E. W. GROVE on box. 35c.

S. & H. Green Stamps for cash. Holman Fuel Co. Main 353. (40-21-Adv.)

Headaches From Slight Cold. LAXATIVE BROMO QUININE Tablets relieve the Headache by ridding the system of toxic waste and germ destroyer. Look for signature E. W. GROVE on box. 35c.

S. & H. Green Stamps for cash. Holman Fuel Co. Main 353. (40-21-Adv.)

## KEEP IT SWEET

### Keep your stomach sweet today and ward off the indigestion of tomorrow—try KI-MOIDS

the new aid to digestion—as pleasant and as safe to take as candy. MADE BY SCOTT & BOWEN MAKERS OF SCOTT'S EMULSION

SALEM, Or., March 22.—(Special.)—The committee on the condition of class rooms at Corvallis.

OREGON AGRICULTURAL COLLEGE, Corvallis, March 22.—(Special.)—A committee of the Oregon chapter of the American Association of Engineers has just inspected the college to determine the needs of the institution in respect to the school of engineering. The committee consisted of F. D. Weber, chairman, O. Laurgard, E. W. Lazell, F. S. Ballie and D. C. Henry.

The committee commented on the crowded condition of class rooms and laboratories. The association is showing great interest in the engineering activities of the college and will give its unanimous support to the millage tax question to be voted on May 21, it is thought.

Excise Tax on Jewelry Proposed. IDAHOA SEES MORNING TRAIN. SALEM, Or., March 22.—(Special.)—A petition signed by about 40 residents of Idaho, located at the terminus of the Mill City branch of the Southern Pacific railroad, has been filed with the Oregon public service commission asking that morning train service be extended to that place. It is set out in the petition that about 100 families reside in the vicinity of Idaho, and under the present train schedule, the residents there are unable to make the return trip to Detroit in one day. The commission probably will hear the application early in April, although no definite date has yet been set.

Read The Oregonian classified ads.

THOMPSON'S Deep-Cure Lenses Are Better. (Trademark Registered) THE SIGN OF PERFECT SERVICE. Thoroughly experienced Optician for the examination and adjustment, skilled workmen to construct the lenses—a guaranteed service that guarantees dependable glasses at reasonable prices. Complete Lens Grinding Factory on the Premises. SAVE YOUR EYES. THOMPSON OPTICAL INSTITUTE EYE-SIGHT SPECIALISTS. Portland's Largest, Most Modern, Best Equipped, Extensive Optical Establishment. 209-10-11 CORBETT BLDG., FIFTH AND MORRISON. Since 1908.

Useless things—a safety razor without a blade—a lock without a key—a flashlight without a battery. See page 6.

Headaches From Slight Cold. LAXATIVE BROMO QUININE Tablets relieve the Headache by ridding the system of toxic waste and germ destroyer. Look for signature E. W. GROVE on box. 35c.

S. & H. Green Stamps for cash. Holman Fuel Co. Main 353. (40-21-Adv.)

Headaches From Slight Cold. LAXATIVE BROMO QUININE Tablets relieve the Headache by ridding the system of toxic waste and germ destroyer. Look for signature E. W. GROVE on box. 35c.

S. & H. Green Stamps for cash. Holman Fuel Co. Main 353. (40-21-Adv.)

Headaches From Slight Cold. LAXATIVE BROMO QUININE Tablets relieve the Headache by ridding the system of toxic waste and germ destroyer. Look for signature E. W. GROVE on box. 35c.

S. & H. Green Stamps for cash. Holman Fuel Co. Main 353. (40-21-Adv.)

Headaches From Slight Cold. LAXATIVE BROMO QUININE Tablets relieve the Headache by ridding the system of toxic waste and germ destroyer. Look for signature E. W. GROVE on box. 35c.

S. & H. Green Stamps for cash. Holman Fuel Co. Main 353. (40-21-Adv.)

Headaches From Slight Cold. LAXATIVE BROMO QUININE Tablets relieve the Headache by ridding the system of toxic waste and germ destroyer. Look for signature E. W. GROVE on box. 35c.

S. & H. Green Stamps for cash. Holman Fuel Co. Main 353. (40-21-Adv.)

Headaches From Slight Cold. LAXATIVE BROMO QUININE Tablets relieve the Headache by ridding the system of toxic waste and germ destroyer. Look for signature E. W. GROVE on box. 35c.

S. & H. Green Stamps for cash. Holman Fuel Co. Main 353. (40-21-Adv.)

Headaches From Slight Cold. LAXATIVE BROMO QUININE Tablets relieve the Headache by ridding the system of toxic waste and germ destroyer. Look for signature E. W. GROVE on box. 35c.

S. & H. Green Stamps for cash. Holman Fuel Co. Main 353. (40-21-Adv.)

Headaches From Slight Cold. LAXATIVE BROMO QUININE Tablets relieve the Headache by ridding the system of toxic waste and germ destroyer. Look for signature E. W. GROVE on box. 35c.

S. & H. Green Stamps for cash. Holman Fuel Co. Main 353. (40-21-Adv.)

## ATTACK LAID TO BENSON

### (Continued From First Page.)

everything that Admiral Benson did during the war was done "conscientiously." "It was due largely to Admiral Benson's confidence in him that he was selected to the high post he

SALEM, Or., March 22.—(Special.)—The committee on the condition of class rooms at Corvallis.

OREGON AGRICULTURAL COLLEGE, Corvallis, March 22.—(Special.)—A committee of the Oregon chapter of the American Association of Engineers has just inspected the college to determine the needs of the institution in respect to the school of engineering. The committee consisted of F. D. Weber, chairman, O. Laurgard, E. W. Lazell, F. S. Ballie and D. C. Henry.

The committee commented on the crowded condition of class rooms and laboratories. The association is showing great interest in the engineering activities of the college and will give its unanimous support to the millage tax question to be voted on May 21, it is thought.

Excise Tax on Jewelry Proposed. IDAHOA SEES MORNING TRAIN. SALEM, Or., March 22.—(Special.)—A petition signed by about 40 residents of Idaho, located at the terminus of the Mill City branch of the Southern Pacific railroad, has been filed with the Oregon public service commission asking that morning train service be extended to that place. It is set out in the petition that about 100 families reside in the vicinity of Idaho, and under the present train schedule, the residents there are unable to make the return trip to Detroit in one day. The commission probably will hear the application early in April, although no definite date has yet been set.

Read The Oregonian classified ads.

THOMPSON'S Deep-Cure Lenses Are Better. (Trademark Registered) THE SIGN OF PERFECT SERVICE. Thoroughly experienced Optician for the examination and adjustment, skilled workmen to construct the lenses—a guaranteed service that guarantees dependable glasses at reasonable prices. Complete Lens Grinding Factory on the Premises. SAVE YOUR EYES. THOMPSON OPTICAL INSTITUTE EYE-SIGHT SPECIALISTS. Portland's Largest, Most Modern, Best Equipped, Extensive Optical Establishment. 209-10-11 CORBETT BLDG., FIFTH AND MORRISON. Since 1908.

Useless things—a safety razor without a blade—a lock without a key—a