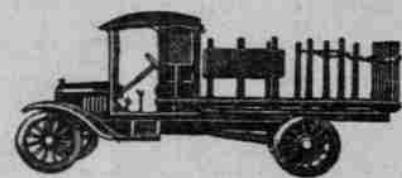


FORD COMMERCIAL BODIES

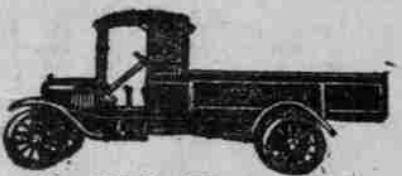
Complete Line of Henney and Barnett
Hercules Commercial Bodies for T Chassis
and One Ton Trucks



No. 415 for Ford One Ton



No. 410 for Ford One Ton



No. 405 for Ford One Ton



No. 401 for Ford One Ton



Our New Home Now Under Construction at Grand
Avenue and Hawthorne



No. 228 for Model T Chassis

Immediate delivery. We can have you on the road
in a few hours. Write for catalogue and prices.



No. 200 for Model T Chassis



No. 220 for T Chassis



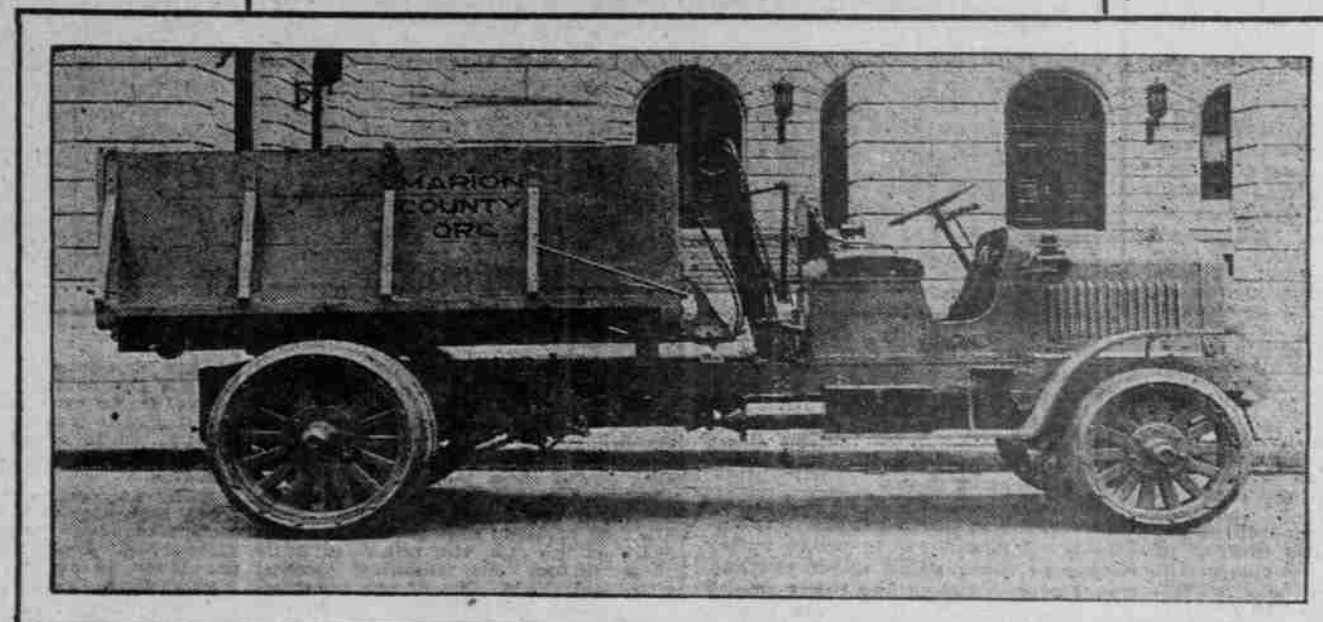
No. 260 for T Chassis



No. 225 for T Chassis

Francis Motor Car Company

Wholesale and Retail
East Thirteenth and Hawthorne Avenue



One of Marion County's Fleet of 5 GMC Trucks

Investigate GMC Service

You will find GMC Dealers and GMC Service Stations in all
large towns of the State of Oregon.

We carry an almost unlimited stock of parts in order that GMC
Trucks may give uninterrupted service.

We are in a position to make immediate delivery on all models
of GMC Trucks— $\frac{3}{4}$ —1, 1 $\frac{1}{2}$, 2, 3 $\frac{1}{2}$, 5-ton capacity, including
pneumatic tired GMC's up to 5-ton capacity.

Buying a GMC is buying service.

WENTWORTH & IRWIN, Inc.,
200 Second Street, Corner Taylor

Perfection Asbestos Protected Tires

THE ACME OF
PERFECTION



Sold on a Real Mileage
Guarantee of
8000 Miles on All Non-Skids
6000 Miles on All Rib-Skids

PERFECTION ASBESTOS PROTECTED TIRES have everything
that other high-grade tires have in their construction and in addition
thereto have an extra ply of the strongest Sea Island fabric, also an
ASBESTOS BREAKER STRIP of our own weaving.

EVERY TIRE is built by the careful HAND-MADE process, by expert
tire builders, under the most rigid inspection at all times.

RUBBER TREAD has a tougher wearing, road-resisting quality than com-
monly used, due to the fact that our exclusive open weave ASBESTOS
BREAKER STRIP protecting the fabric, enables us to subject the tires,
in the curing process, to the degree of heat necessary for a thorough cure.

FAMOUS for their mileage, and FULLY GUARANTEED by one of
the world's largest organizations—NEMOURS TRADING CORPO-
RATION, New York City.

EELIMINATES tread separation. More than ninety per cent of tire troubles
are caused by loose treads which eventually spells blowouts. The
ASBESTOS BREAKER STRIP prevents this and the cotton fabric is
unaffected by moisture, acids or grease, and particularly by heat generated
from road friction.

CANDIDLY speaking, we do not see how it is possible to build better tires
or give better value for the money. Every ounce of material entering into
the construction of PERFECTION TIRES, from the tread rubber down
to the bead stock, is of the best quality the market affords.

TO PROVE the economy in buying PERFECTION TIRES figure actual
cost per one hundred miles and you will readily see that PERFECTION
TIRES cost no more than other high-grade tires and in the majority of
instances much less.

IT REQUIRES sixty pounds to the inch to separate the tread rubber from
the ASBESTOS BREAKER STRIP, and fifty-eight pounds to the
inch to separate the breaker strip from the outer ply of fabric on
PERFECTION TIRES. This test proves, without doubt, that the
union between tread and carcass on PERFECTION TIRES is fifty to
one hundred per cent stronger than the best quality all-cotton fabric tires.

OUR TIRES are made by the PERFECTION TIRE & RUBBER CO.
of Fort Madison, Iowa, and Wabash, Ind., and are a proven success.
They are properly balanced and resilient, yet tough enough to resist the
wear of rough roads, built in every way for a career of wonderful service.
Our red tubes are also unsurpassed.

NOW that we have told you about the PERFECTION ASBESTOS
PROTECTED TIRES, why not start the New Year right by trying say
one tire and test it out with any other make? We feel confident you will
not only be satisfied but more than pleased.

AN ATTRACTIVE PROPOSITION OPEN TO DEALERS

PERFECTION TIRE CO., Inc.

Distributors for Oregon—Washington—Idaho—Montana
PHONE BDWY. 1641 72 SIXTH ST. PORTLAND, OREGON
or 433 Stark St. Bdwy. 3943



Custom Fashioned Bodies.
Longer, Lower Body Sides.
Warm, Rich, Non-Fading Colors.
Nickel Trimming.
Non-Rattling, Non-Squeaking.
American Type Seating Capacity.
Combined with the Famous
Stephens Perfected Overhead-Valve

Engine that Burns All the Gas,
No Matter What Grade, Without
Lessened Performance.
More Power Per Charge.
More Miles Per Gallon.
More Speed Per Hour.
Longer Life Per Car.
The Stephens Has Everything.

HAMILTON MOTOR CO.
Distributors
50 NORTH BROADWAY